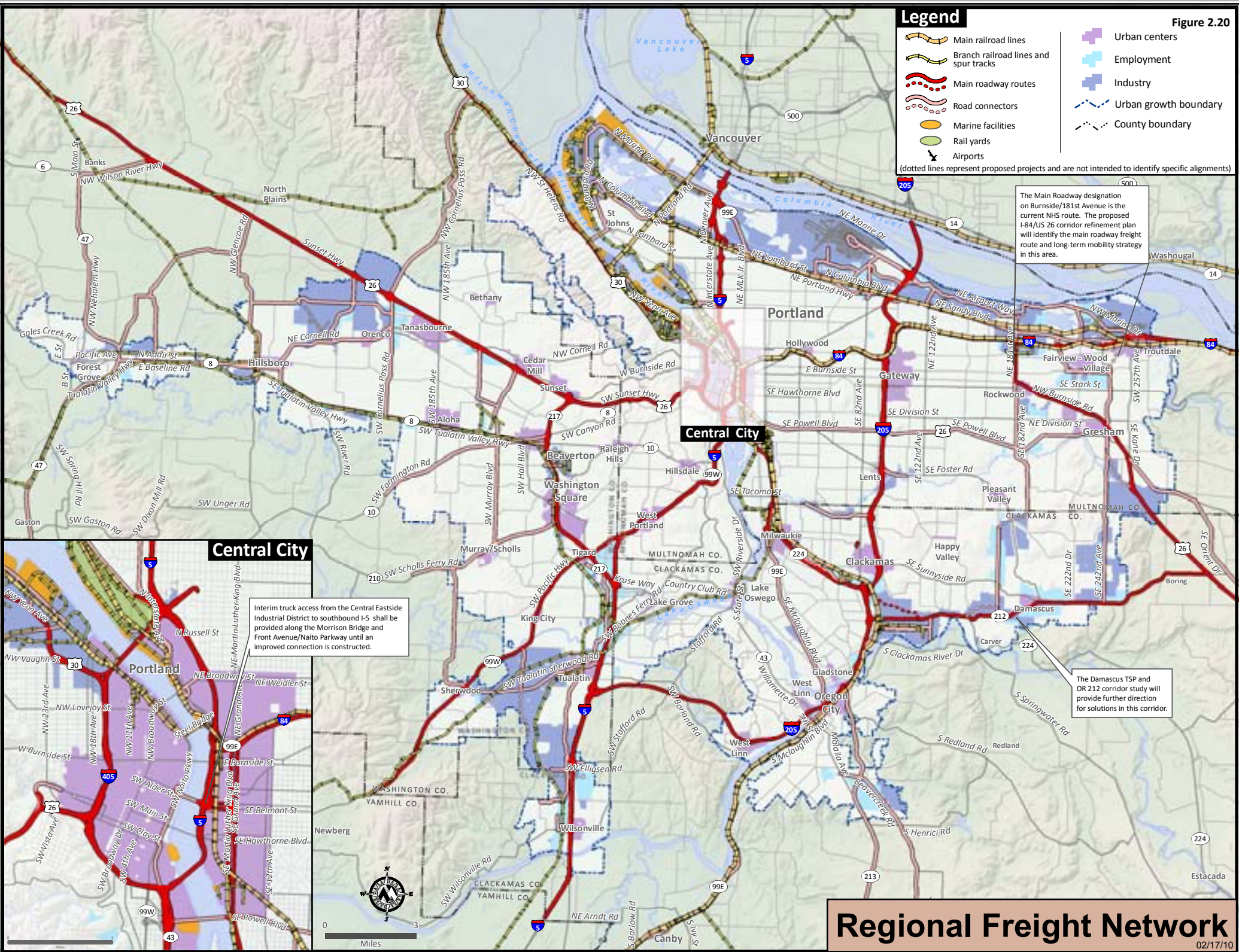


Figure 2.20

Legend

- Main railroad lines
- Branch railroad lines and spur tracks
- Main roadway routes
- Road connectors
- Marine facilities
- Rail yards
- Airports
- Urban centers
- Employment
- Industry
- Urban growth boundary
- County boundary

(dotted lines represent proposed projects and are not intended to identify specific alignments)



The Main Roadway designation on Burnside/181st Avenue is the current NHS route. The proposed I-84/US 26 corridor refinement plan will identify the main roadway freight route and long-term mobility strategy in this area.

Interim truck access from the Central Eastside Industrial District to southbound I-5 shall be provided along the Morrison Bridge and Front Avenue/Naito Parkway until an improved connection is constructed.

The Damascus TSP and OR 212 corridor study will provide further direction for solutions in this corridor.



Regional Freight Network