

Transportation Disadvantaged

- No Data
- Least Disadvantaged
- Somewhat Disadvantaged
- Disadvantaged
- Most Disadvantaged
- Incorporated Areas
- County Boundary
- UGB

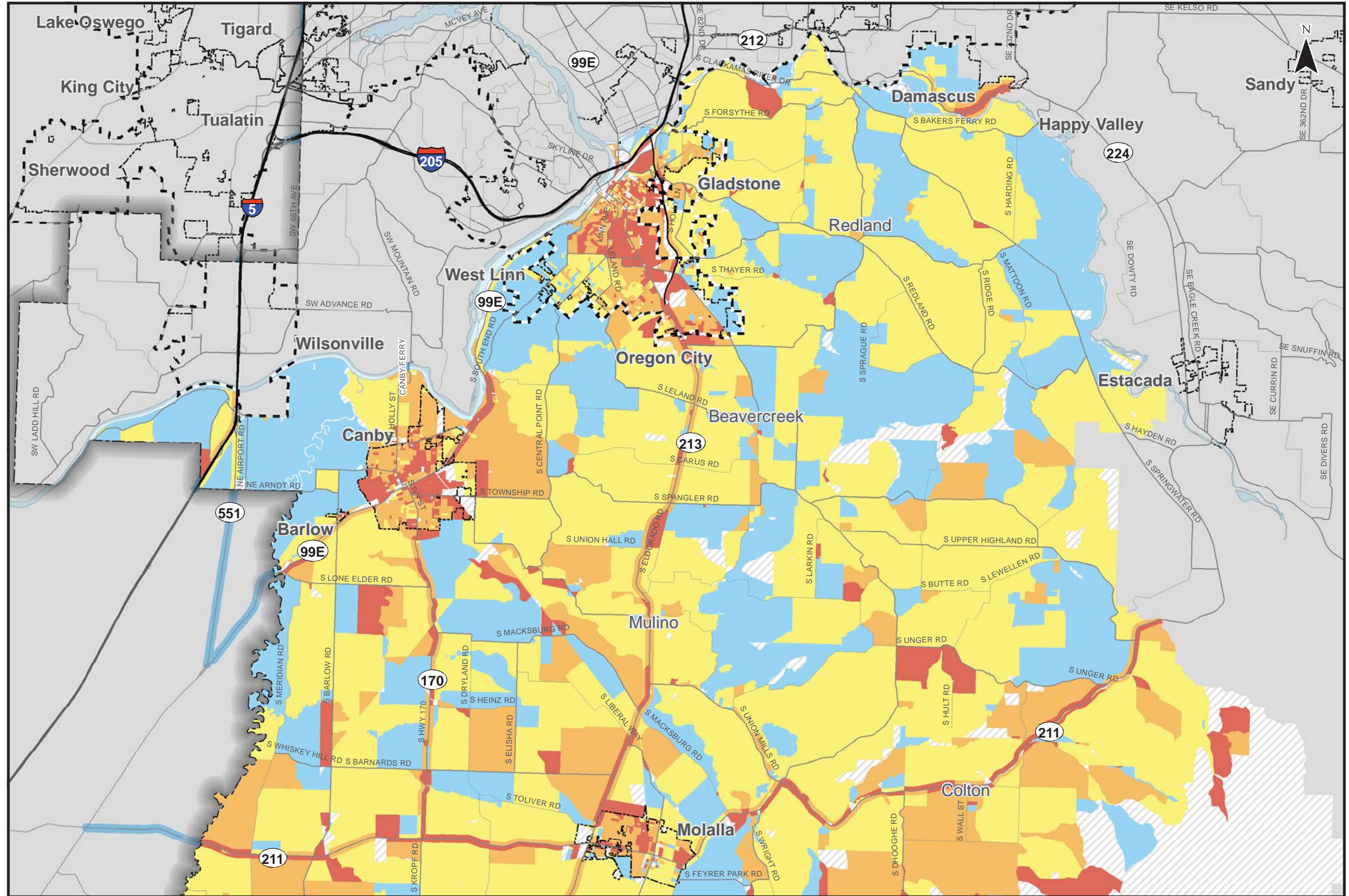
The Transportation Disadvantaged Index takes into account a number of demographic characteristics including age, income, ethnicity, vehicle ownership, ability to speak English, and proximity of freeway or highways to a household. The higher the index number the more disadvantaged the population is with respect to transportation.

More specifically the index is calculated at the census block level as the sum of people 65 and older, 17 and younger, under 200% of the poverty line, non-white and non-Hispanic, living in households with 0-1 vehicles, and living in households where no adult speaks English well. That sum is divided by total block population; twenty-five is added for areas within 500 feet of a freeway or highway. People fitting into multiple vulnerability categories are counted multiple times. Data at the household level is multiplied by 2.56 to convert it to a person unit. The number 2.56 is the average household size for Clackamas County. Data only available by tract is distributed among blocks based on the distribution of tract population.



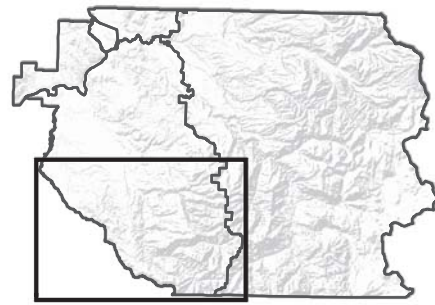
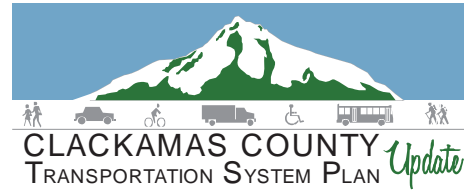
Coordinate System:
NAD 1983 HARN StatePlane Oregon North FIPS 3601 Feet Intl

Data Source: US Census Bureau (2010 SF1, 5-year ACS estimates, TigerLine Shapefiles) Map and analysis by Liz Paterson, April 2012, Oregon Public Health Institute, Clackamas County, Metro Data Resource Center



**Transportation Disadvantaged Populations by Census Block
Southwest County - Northern Portion**

Figure
SN 9



Transportation Disadvantaged

- No Data
- Least Disadvantaged
- Somewhat Disadvantaged
- Disadvantaged
- Most Disadvantaged
- Incorporated Areas
- County Boundary
- UGB

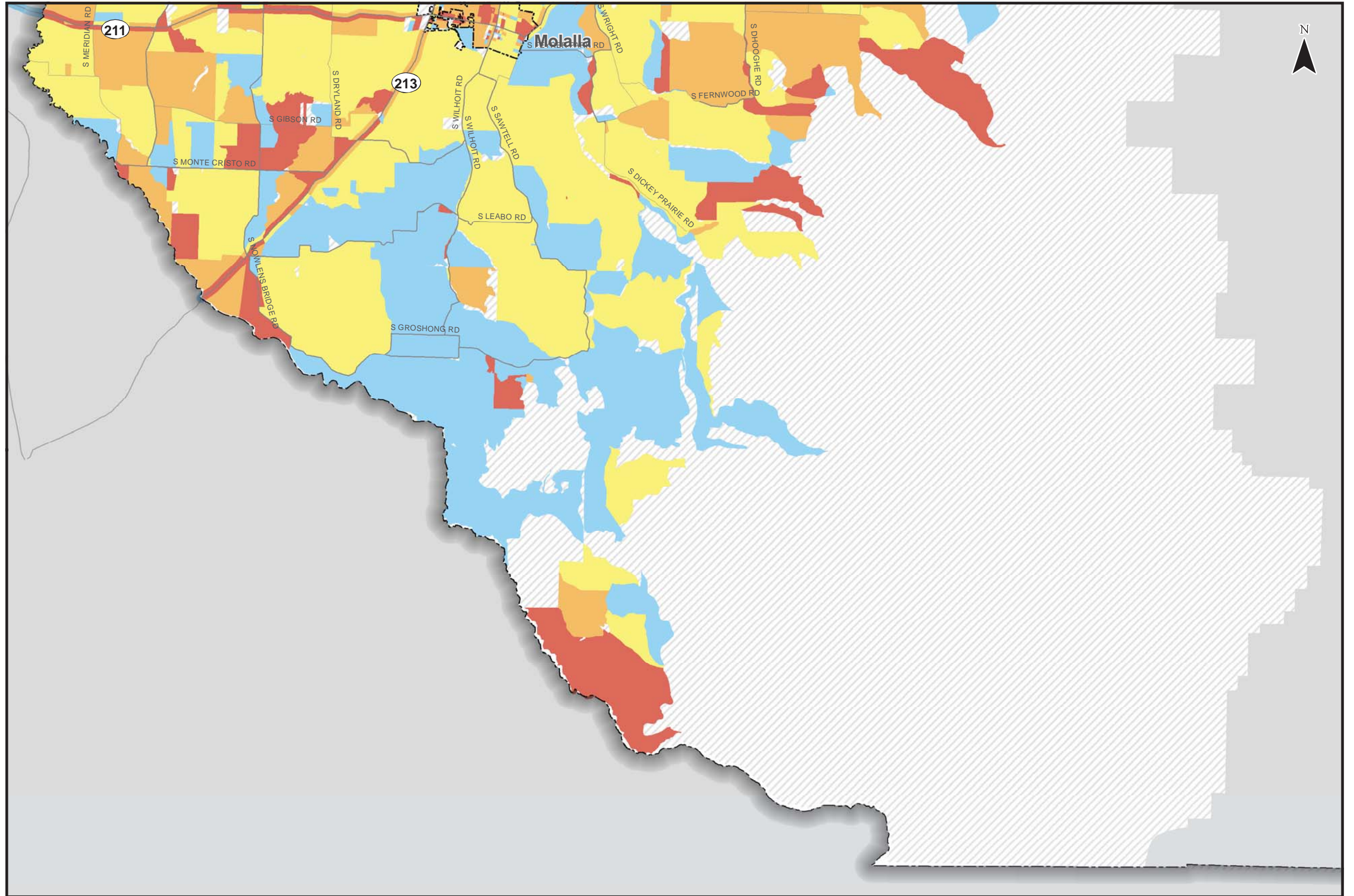
The Transportation Disadvantaged Index takes into account a number of demographic characteristics including age, income, ethnicity, vehicle ownership, ability to speak English, and proximity of freeway or highways to a household. The higher the index number the more disadvantaged the population is with respect to transportation.

More specifically the index is calculated at the census block level as the sum of people 65 and older, 17 and younger, under 200% of the poverty line, non-white and non-Hispanic, living in households with 0-1 vehicles, and living in households where no adult speaks English well. That sum is divided by total block population; twenty-five is added for areas within 500 feet of a freeway or highway. People fitting into multiple vulnerability categories are counted multiple times. Data at the household level is multiplied by 2.56 to convert it to a person unit. The number 2.56 is the average household size for Clackamas County. Data only available by tract is distributed among blocks based on the distribution of tract population.



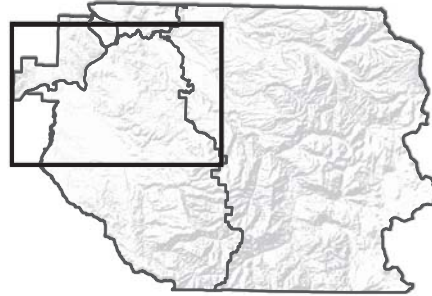
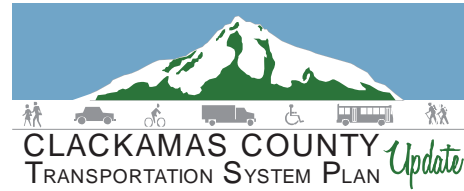
Coordinate System:
NAD 1983 HARN StatePlane Oregon North FIPS 3601 Feet Intl

Data Source: US Census Bureau (2010 SF1, 5-year ACS estimates, Tiger/Line Shapefiles) Map and analysis by Liz Paterson, April 2012, Oregon Public Health Institute, Clackamas County, Metro Data Resource Center



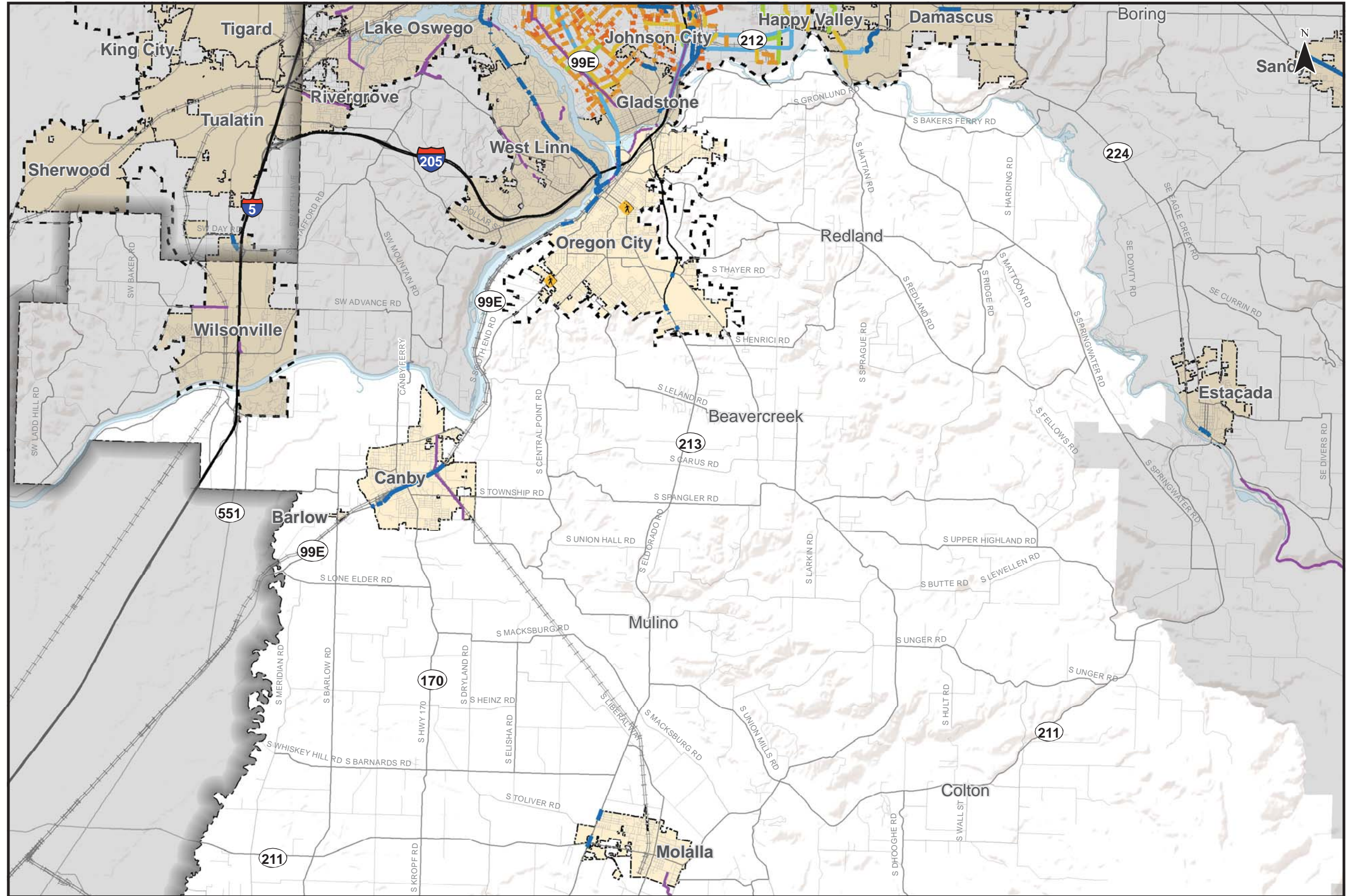
Transportation Disadvantaged Populations by Census Block Southwest County - Southern Portion

Figure
SS 9



Pedestrian Network

- Sidewalks
- 76% to 99% Complete
- 51% to 75% Complete
- 26% to 50% Complete
- 1% to 25% Complete
- - - No Sidewalks
- Multi-Use Path
- Ped Crossing Flasher
- Incorporated Areas
- County Boundary
- UGB

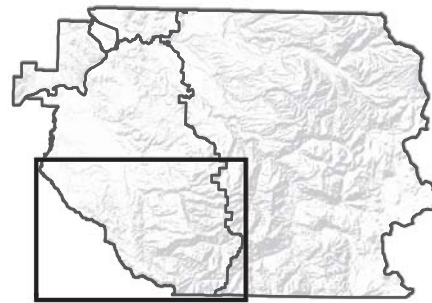
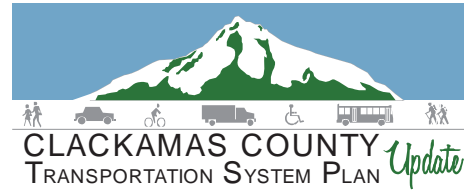


Coordinate System:
NAD 1983 HARN StatePlane Oregon North FIPS 3601 Feet Intl
Data Source:
Clackamas County, Metro Data Resouce Center

Pedestrian Network Southwest County - Northern Portion

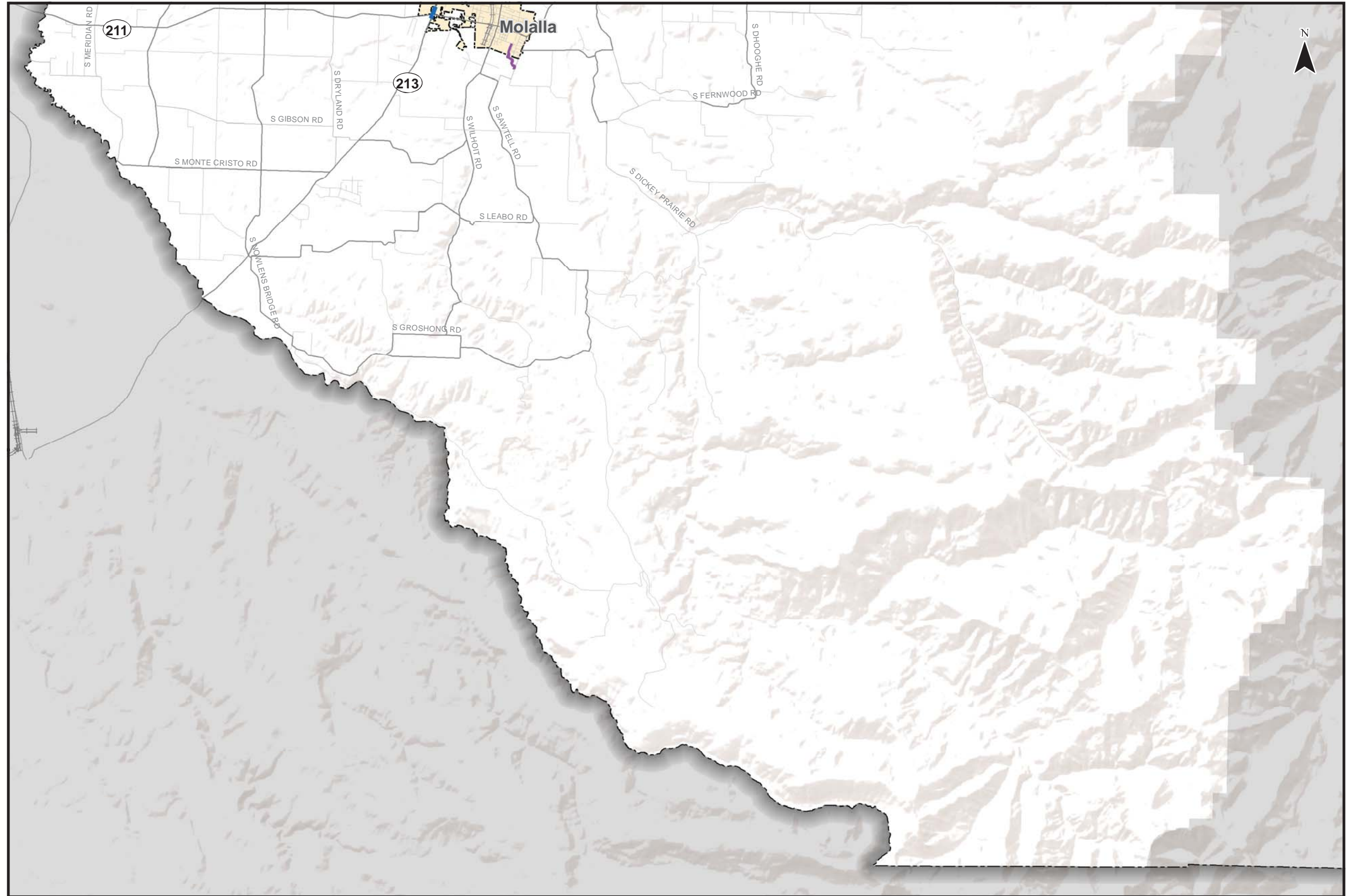
Figure
SN 18

H:\profile\11732 - Clackamas County TSP\gis\11x17 Maps\18 Pedestrian Network.mxd



Pedestrian Network

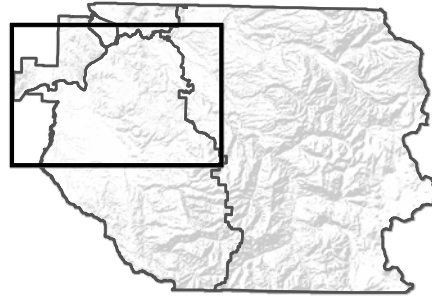
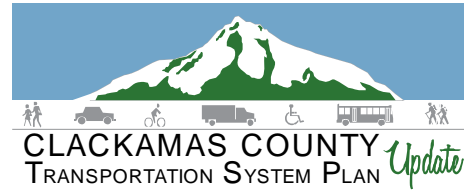
- Sidewalks
- 76% to 99% Complete
- 51% to 75% Complete
- 26% to 50% Complete
- 1% to 25% Complete
- No Sidewalks
- Multi-Use Path
- Ped Crossing Flasher
- Incorporated Areas
- County Boundary
- UGB



Coordinate System:
NAD 1983 HARN StatePlane Oregon North FIPS 3601 Feet Intl
Data Source:
Clackamas County, Metro Data Resouce Center

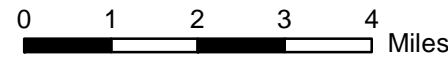
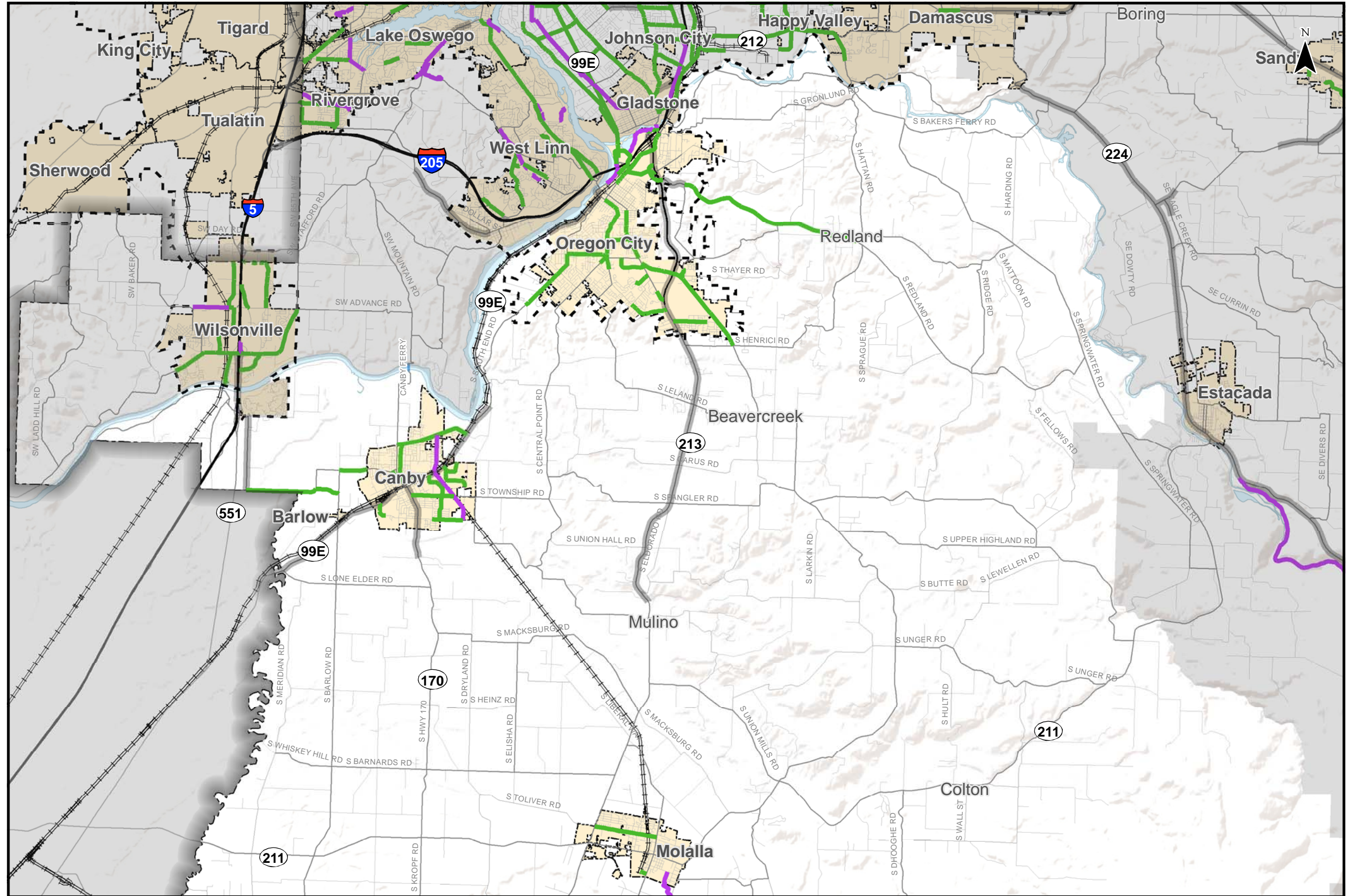
Pedestrian Network Southwest County - Southern Portion

Figure
SS 18



Bike Facilities

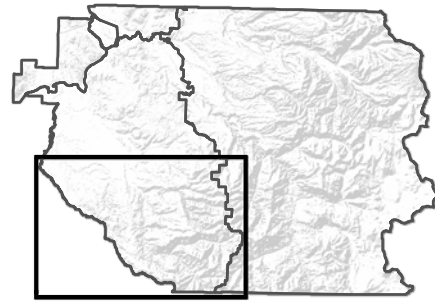
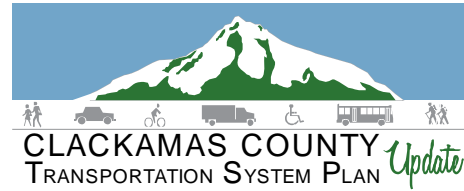
- Bike Lane
- Multi-Use Path
- Shoulders (At Least 4ft Wide)
- Incorporated Areas
- County Boundary
- UGB



Coordinate System:
NAD 1983 HARN StatePlane Oregon North FIPS 3601 Feet Intl
Data Source:
Clackamas County, Metro Data Resouce Center

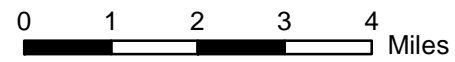
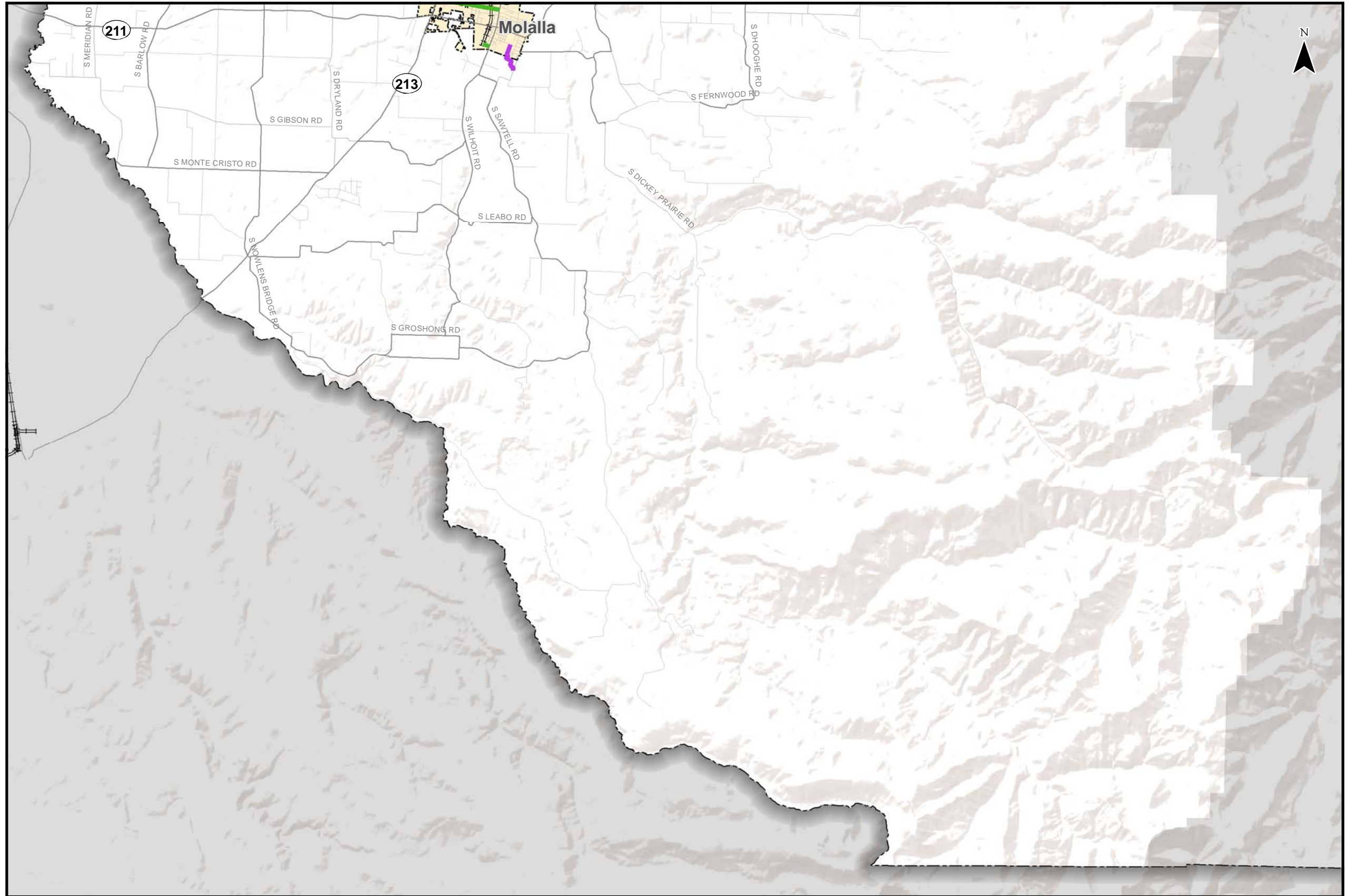
Bicycle Network Southwest County - Northern Portion

Figure
SN 19



Bike Facilities

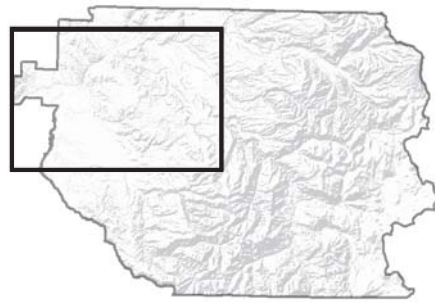
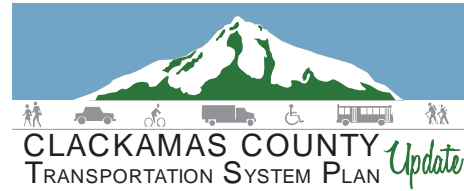
- Bike Lane
- Multi-Use Path
- Shoulders (At Least 4ft Wide)
- Incorporated Areas
- County Boundary
- UGB



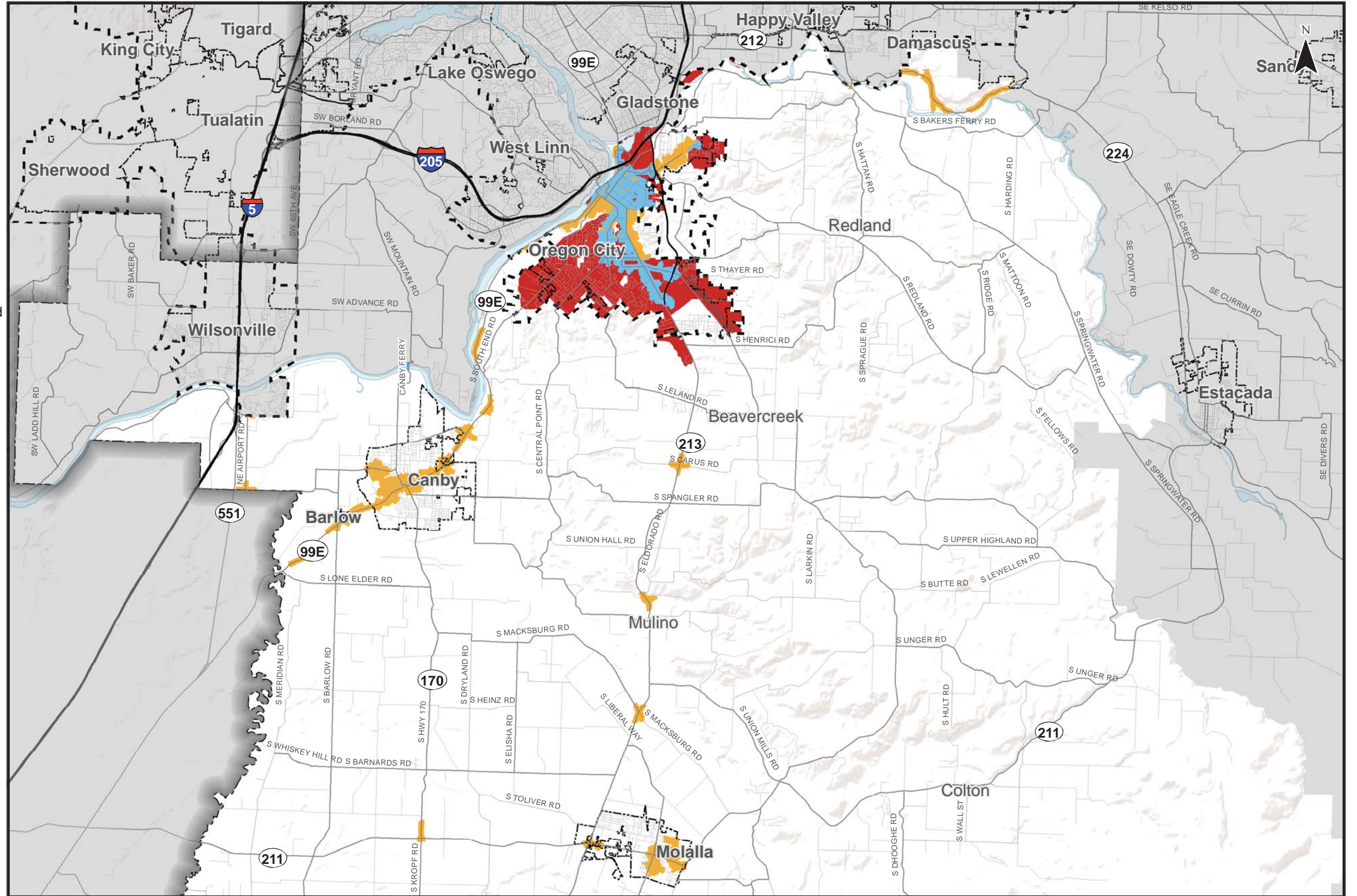
Coordinate System:
NAD 1983 HARN StatePlane Oregon North FIPS 3601 Feet Intl
Data Source:
Clackamas County, Metro Data Resouce Center

Bicycle Network Southwest County - Southern Portion

Figure
SS 19



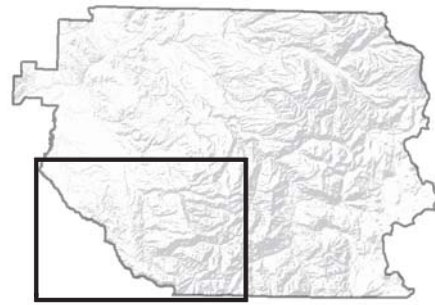
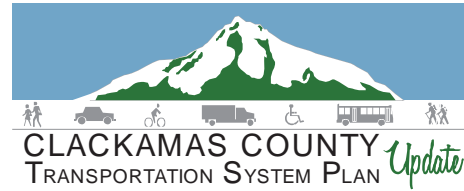
- Transit Supportive Areas Served
- Transit Supportive Areas
- Transit Service Areas
- Incorporated Areas
- County Boundary
- UGB



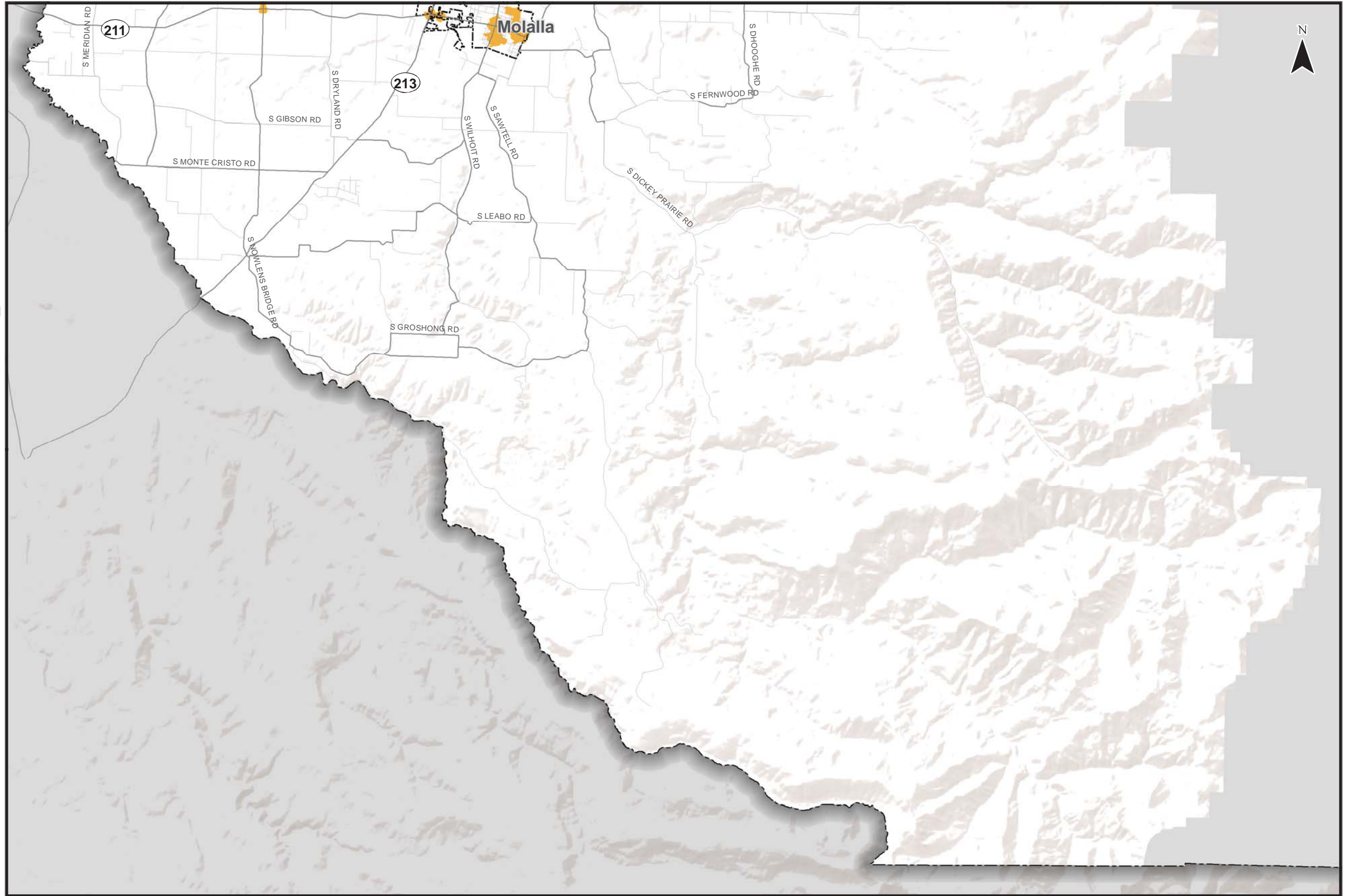
Coordinate System:
NAD 1983 HARN StatePlane Oregon North FIPS 3601 Feet Intl
Data Source:
Clackamas County, Metro Data Resouce Center

**Future Transit Supportive Areas
Southwest County - Northern Portion**

Figure
SN 22



- Transit Supportive Areas Served
- Transit Supportive Areas
- Transit Service Areas
- Incorporated Areas
- County Boundary
- UGB



Coordinate System:
NAD 1983 HARN StatePlane Oregon North FIPS 3601 Feet Intl
Data Source:
Clackamas County, Metro Data Resouce Center

Future Transit Supportive Areas Southwest County - Southern Portion

Figure
SS 22