

Clackamas County Transportation System Plan Update

Policy Working Group Meeting #9

June 6, 2013



CLACKAMAS COUNTY *Update*
TRANSPORTATION SYSTEM PLAN

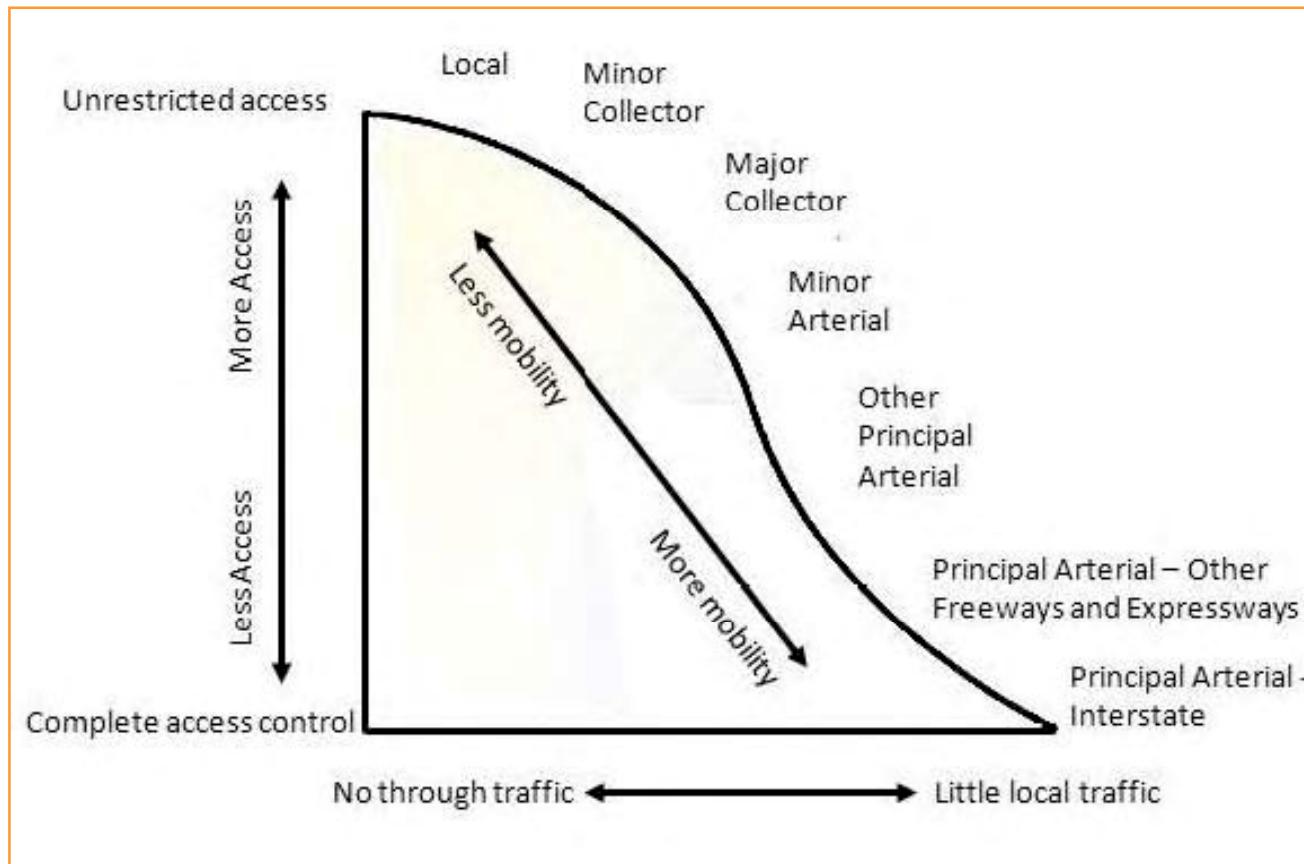


Meeting Agenda

- Welcome/Introductions
- Functional Classifications
- Performance Standards
- Overview of Policy Document
- Follow-Up Policy Work
- Next Steps

What is Functional Classification?

- Functional classification (class): *Categories of roadways based on mobility, access and amount of through traffic*



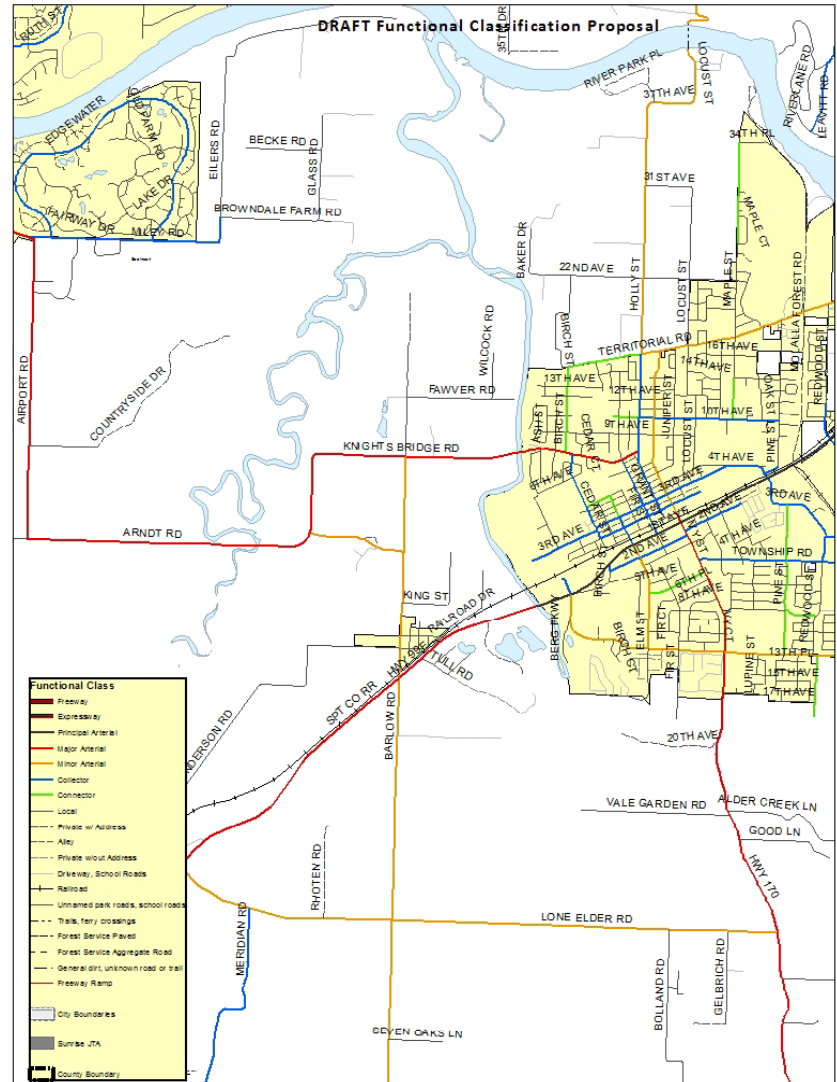
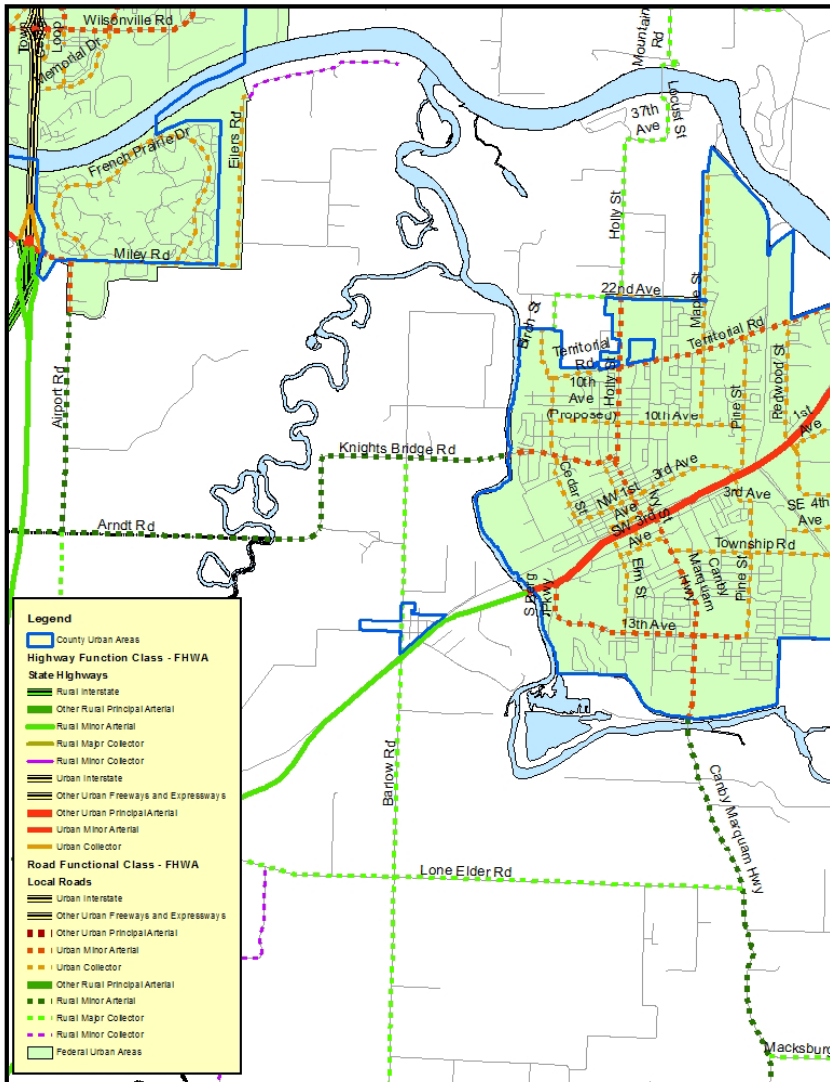
Functional Classification Criteria

> Definitions and Functional Class Maps

- County Functional Class Descriptions (Table V-2)
- Federal Functional Class Definitions

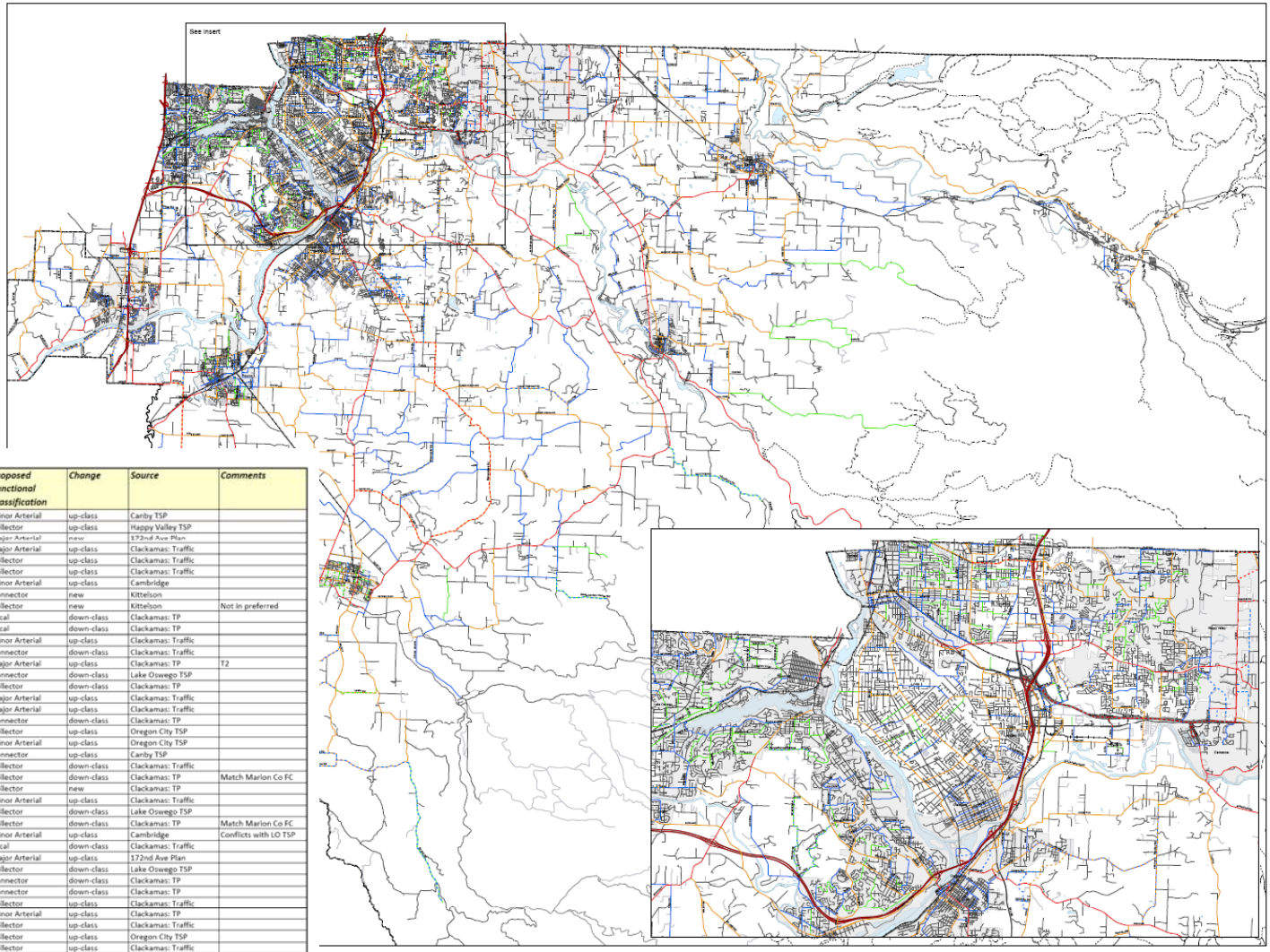
Functional Classification	Distance Served	Access Points	Speed Limit	Distance Between Routes	Usage	Significance	Number of Travel Lanes
Arterial	<i>Longest</i>	<i>Few</i>	<i>Highest</i>	<i>Longest</i>	<i>Highest</i>	<i>Statewide</i>	<i>More</i>
Collector	<i>Medium</i>	<i>Medium</i>	<i>Medium</i>	<i>Medium</i>	<i>Medium</i>	<i>Medium</i>	<i>Medium</i>
Local	<i>Shortest</i>	<i>Many</i>	<i>Lowest</i>	<i>Shortest</i>	<i>Lowest</i>	<i>Local</i>	<i>Fewer</i>

Federal and County Functional Class



Recommended County Functional Class Changes

- Table
- Map



Road Name	Extent	Functional Classification	Proposed Functional Classification	Change	Source	Comments
13th Ave	Mulino Rd to OR 99E	Local	Minor Arterial	up-class	Carby TSP	
162nd Ave	Rock Creek Blvd to OR 212	Local	Collector	up-class	Happy Valley TSP	
172nd Ave/180th Dr Connector	172nd Ave to 180th Dr	Minor Arterial	Major Arterial	new	172nd Ave Plan	
282nd Ave	OR 212 to Multnomah	Minor Arterial	Major Arterial	up-class	Clackamas: Traffic	
312th Ave	Orient Dr to Compton Rd	Local	Collector	up-class	Clackamas: Traffic	
55th Ave	Schatz Rd to Deiker Rd	Local	Collector	up-class	Clackamas: Traffic	
65th Ave	Sagert St to Elligen Rd	Collector	Minor Arterial	up-class	Cambridge	
67th Ave Ext	Maplehurst Rd to Furnberg St	Collector	new	new	Kittelson	
79th Ave (West Connector)	Luther Rd to King Rd	Collector	Collector	new	Kittelson	Not in preferred
79th Ave (West Connector)	South of Luther Rd	Local	Local	down-class	Clackamas: TP	
97th Ave (West Connector)	North of JCB	Local	Local	down-class	Clackamas: TP	
97th Ave / Summers Ln	Talbert St to 122nd Ave	Collector	Minor Arterial	up-class	Clackamas: Traffic	
98th Ct	Lawnfield Rd to Mather Rd	Collector	Collector	down-class	Clackamas: Traffic	
Arndt Rd	Barlow Rd to Knights Bridge Rd	Minor Arterial	Minor Arterial	up-class	Clackamas: TP	T2
Atwater Rd	Andrews Rd to Sycaratan Dr	Collector	Collector	down-class	Lake Oswego TSP	
Barlow Rd	Knights Bridge Rd to Arndt Rd	Minor Arterial	Collector	down-class	Clackamas: TP	
Barlow Rd	OR 211 to Arndt Rd	Minor Arterial	Major Arterial	up-class	Clackamas: Traffic	
Beavercreek Rd	OR 213 to OR 211	Minor Arterial	Major Arterial	up-class	Clackamas: Traffic	
Berg/Skyland	Berg's Rd to Crestline Dr	Collector	Collector	down-class	Clackamas: TP	
Beutel Rd	Near South End Rd	Local	Collector	up-class	Oregon City TSP	
Beutel Rd	Near South End Rd	Local	Minor Arterial	up-class	Oregon City TSP	
Birch St	22nd Ave to Territorial Rd	Local	Collector	up-class	Carby TSP	
Blair Rd	Grashong Rd to Maple Grove Rd	Minor Arterial	Collector	down-class	Clackamas: Traffic	
Boones Ferry Rd	Boones Ferry to Marion Co boundary	Minor Arterial	Collector	down-class	Clackamas: TP	Match Marion Co FC
Boyer Dr	82nd Ave to Fuller Rd	Collector	Collector	new	Clackamas: TP	
Bradley Rd	Gronlund Rd to Redland Rd	Collector	Minor Arterial	up-class	Clackamas: Traffic	
Bryant Rd	Old Gate Rd to Casey Ct	Minor Arterial	Collector	down-class	Lake Oswego TSP	
Butteville Rd	Boones Ferry Rd to Marion County	Minor Arterial	Collector	down-class	Clackamas: TP	Match Marion Co FC
Carman Dr	1-5 to Parkview Dr	Collector	Minor Arterial	up-class	Cambridge	
Carpenter Dr	120th Ave to Capps Rd	Local	Local	down-class	Clackamas: Traffic	Conflicts with LO TSP
Chaldelin Rd	170th Ave to 190th Dr	Local	Major Arterial	up-class	172nd Ave Plan	
Childs Rd	65th Ave to Sycamore Ave	Minor Arterial	Collector	down-class	Lake Oswego TSP	
Cornell St	Cornell Ct to Bergs Rd	Collector	Collector	down-class	Clackamas: TP	
Crestline Dr	Skyland Rd to Green Bluff	Collector	Collector	down-class	Clackamas: TP	
Dart Rd	Wilhoop Rd to OR 213	Local	Collector	up-class	Clackamas: Traffic	
Deer Creek	82nd Dr to Johnson Rd	Local	Minor Arterial	up-class	Clackamas: TP	
Deiker Rd	65th Ave to 55th Ave	Local	Collector	up-class	Clackamas: Traffic	
Donovan Rd	Near Holly Ln	Local	Collector	up-class	Oregon City TSP	
Drake Rd	OR 213 to Marion Co	Local	Collector	up-class	Clackamas: Traffic	

Functional Class Change Recommendations

- Match City Functional Class for City Streets – 90 changes
- Match City Functional Class for County Streets – 24 changes
 - Birch St - 22nd Ave to Territorial Rd
(Canby TSP)
- Match Marion County Functional Class – 2 changes
 - Butteville Road - Boones Ferry Rd to Marion County Line
(Transportation Planning)
- Upgrade to a Higher Functional Class – 36 changes
 - Deer Creek - 82nd Drive to Johnson Road
(Transportation Planning and Traffic Engineering)

Functional Class Change Recommendations

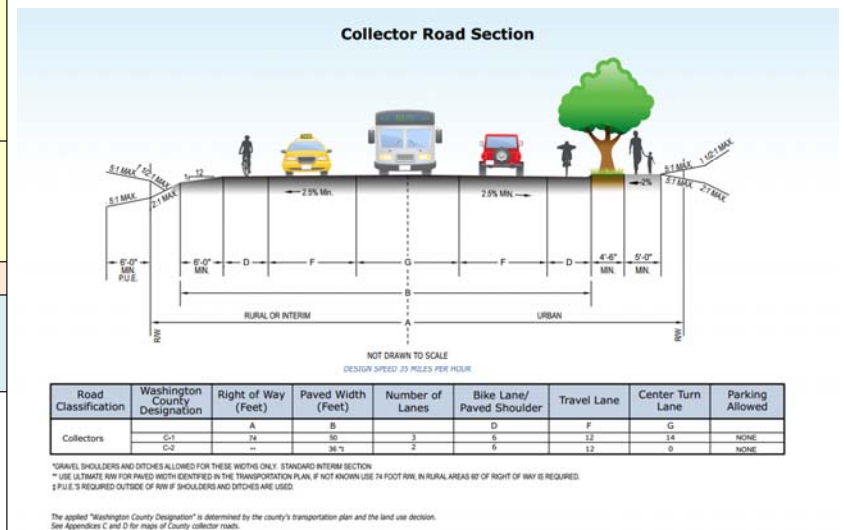
- Downgrade to a Lower Functional Class – 23 changes
 - 98th Court - Lawnfield Road to Mather Road
(Transportation Planning, TSP PAC and Traffic Engineering)
- New Facility Functional Class – 13 additions changes
 - Tolbert Overcrossing - Industrial Way to 82nd Drive
(Transportation Planning)
- Recommended for Removal – 2 facilities

Typical Road Cross-Sections

- Drawings to replace Table V-3
- Washington County example

Table V-3 Roadway Classifications and Guidelines –
THIS TABLE WILL BE USED TO PRODUCE TYPICAL ROAD CROSS SECTION DRAWINGS THAT WILL REPLACE THIS TABLE IN CHAPTER 5

Urban Functional Classification	Metro Green Streets Classification	Number Of Traffic Lanes	Median Lanes	Typical Right-Of-Way Width*	Typical Paved Width	Sidewalk/ Pathway / Pedestrian Zone	Bikeways (Bike Lanes, Cycle Track Etc)	Landscape Strip And Street Trees	Storm Water Facilities
Urban Area									
Freeway / Expressway, State Highways	Regional Principal Arterials	Defer to State Standards (ODOT) or Adopted Alternative Road Cross Sections for specific portions of urban system							
Major Arterial	Regional Boulevard or Regional Street	4 11' – 12' travel lanes	12' – 14' median / turn lane	98' – 118'	64' – 80'	Yes 6' -15' as part of a Pedestrian Zone on each side of the street	Yes 6' – 8'	Yes 5' – 7' may include on street parking	Conventional and/or non-structural storm water facilities
Minor Arterial	Community Boulevard Or Community Street	2 to 4 11' – 12' Travel lanes	Optional 12' – 14' median / turn lane	68' – 112'	60' – 78'	Yes 6' -10	Yes 6' - 8'	Yes 5' - 7' may include on street parking	Conventional and/or non-structural storm water facilities



Functional Class and Roads

➤ Functional Class affects:

- Road cross-sections
- Intersection spacing
- Allowed access to the street
- Driveway spacing

Request for Changes to Functional Class

➤ Example: Lake Road

- Change Lake Road between Harmony Road and OR 224 (Milwaukie Expressway) from a Minor Arterial to a Collector
- Current commercial access spacing minimums for Minor Arterials (Table 2-4, Clackamas County Roadway Standards) cannot accommodate a new access near this location

Request for Changes to Functional Class

➤ Example: Webster Road

- Change Webster Road to a **Collector or Connector** rather than a Minor Arterial in order to maintain two-lane road, while permitting some left-turn pockets at key street intersections.
- Keep road travel lanes at **9 feet** to slow traffic.
- Add **six-foot wide bike lanes** with total pavement width of 30 to 32 feet and include sidewalks both sides.

Performance Standards

- Draft Performance Standards
- Alternative Performance Standards - Oregon Highway Plan Policy 1F3
 - RTFP Performance Standards 3.08.210, 3.08.230
 - ZDO Section 1007.09 Transportation Facilities Concurrency

Draft Performance Standards

➤ Intersection Performance Standards

- Comprehensive Plan Amendments and Zone Changes
- Development Review and Engineering

Location	1 st Peak Hour	2 nd Peak Hour
Metro Urban Centers	1.1 v/c	0.99 v/c
Other Metro Urban Areas	0.99 v/c	0.99 v/c
Rural Areas	LOS D	LOS D
County Roads in Rural Cities	LOS D	LOS D
ODOT Roads in Rural Cities	0.80 to 0.95 v/c	0.80 to 0.95 v/c
ODOT Roads in Rural Areas	0.70 to 0.75 v/c	0.70 to 0.75 v/c

Overview of Complete Policy Document

- Policy document outline
- Miscellaneous additional policies
- PAC Meeting #5D Preview

Policy Document Outline

- Chapter 5 of the Comprehensive Plan (TSP)
 - Policy sections organized by mode (auto, bike, pedestrian, transit, etc.)
 - Policies for each mode organized in three categories
 - **Countywide**
 - **Urban**
 - **Rural**

Miscellaneous Additional Policies

- These policies do the following:
 - Clearly identify Chapter 5 as the TSP
 - Define the three project lists and maps
 - Define the projects by others list and map
 - Define major and minor transportation improvements
 - Clarify the link between the project lists and the 5-year Capital Improvement Program (CIP)

PAC Meeting #5D Policy Preview

➤ Policy Overview Discussion

- Current Goal 5 Policies and Framework
- Policy Review and Update Process
- Conversion of Policy Working Group Policy Statements into Comprehensive Plan Language and Framework

Follow-up Policy Work

- CET Multi-Modal Mixed-Use Grant Application
 - Award notification by end of June
- Funding (C4 updates/next steps)
- Active Transportation Plan (ATP) Project

Next Steps

- June 25 – Public Advisory Committee Meeting #5D
 - Policy discussion
 - Public Input Overview from Virtual Open House and Community Outreach
- July 18 – Technical Advisory Committee Meeting #8
 - Review draft TSP projects, studies and policies
- August 20 – Public Advisory Committee Meeting #6
 - Final PAC meeting
 - Review draft TSP projects, studies and policies

We've accomplished a lot!

THANK YOU!



KITTELSON & ASSOCIATES, INC.
TRANSPORTATION ENGINEERING/PLANNING