

## The Dalles Transportation System Plan

The Dalles is developing a transportation system plan that will identify safety and mobility, accessibility and connectivity, integration and economic development needs and priorities throughout the City for the next 20 years. When complete, this overall document will become the transportation chapter of the City's Comprehensive Plan.

Practically speaking, this plan will guide where future roadways, sidewalks, trails, transit service and other transportation infrastructure will be located to connect and serve the City's current and future residents, businesses, and attractions. This plan focuses on the higher-order "major" roadways within the City, which includes its highways, arterials, and collector facilities.

The attached figures highlight critical elements of this plan. The proceeding pages include blank maps with space for your thoughts and comments.

### **We Want Your Comments!**

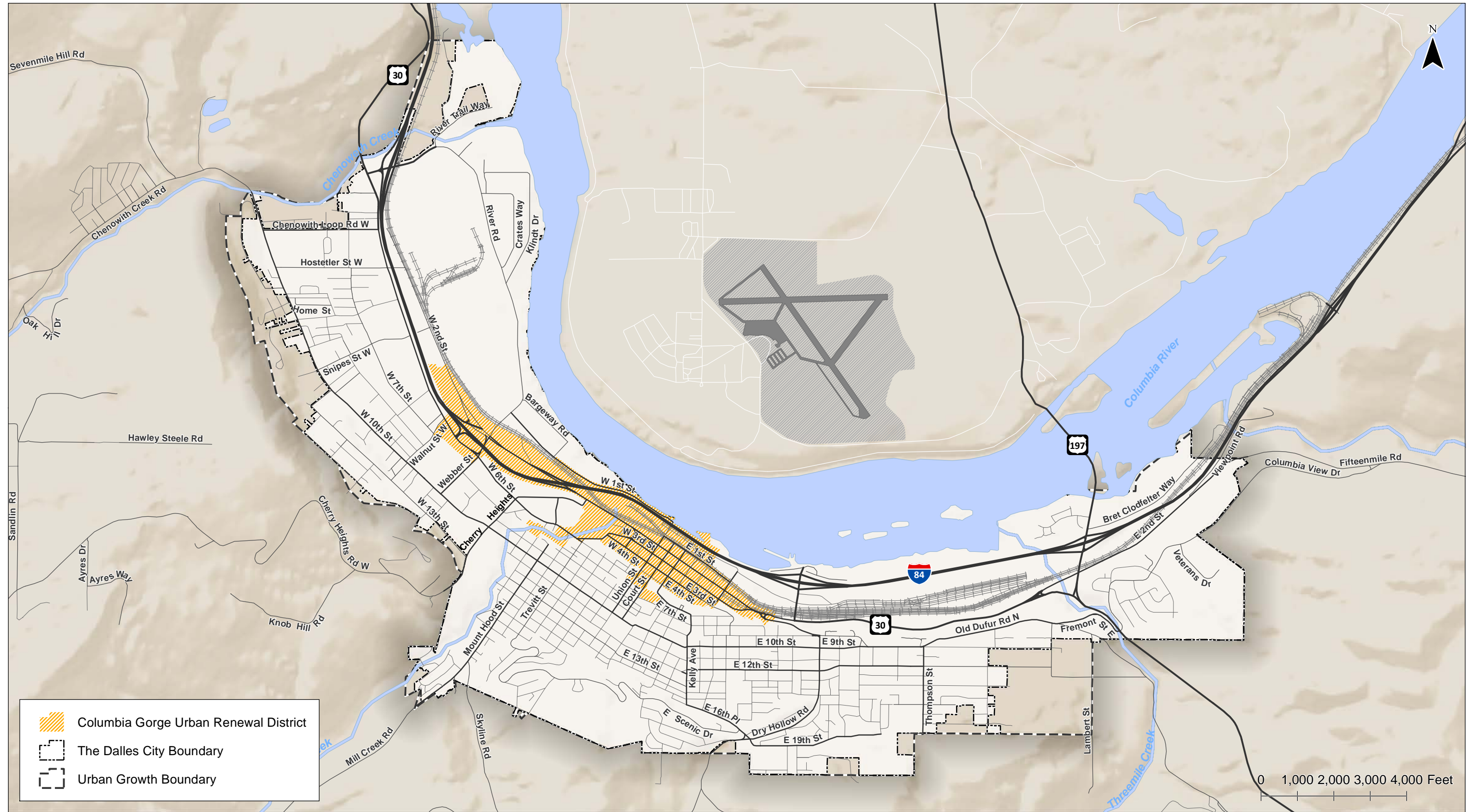
We want to share our findings with you and get your thoughts on how we can best address the needs we've identified (or others we may have missed!). Please take a moment to look at the enclosed materials, and add comments, ideas, and a way for us to contact you should we have any questions regarding what you've provided.

Additional information on the project can be found at [TheDallesTSP.com](http://TheDallesTSP.com), or by contacting the following persons:

Dale S. McCabe  
City Engineer  
1215 W 1st Street  
The Dalles, OR 97058  
(541)506-2021  
dmccabe@ci.the-dalles.or.us

Casey Bergh  
Senior Engineer at Kittelson & Associates, Inc.  
354 SW Upper Terrace Dr, Suite 101  
Bend, Oregon 97702  
541-639-8613  
cbergh@kittelson.com





H:\projects\116495 - The Dalles TSP\figs\black map.mxd - mldel - 10:40 AM 11/17/2015

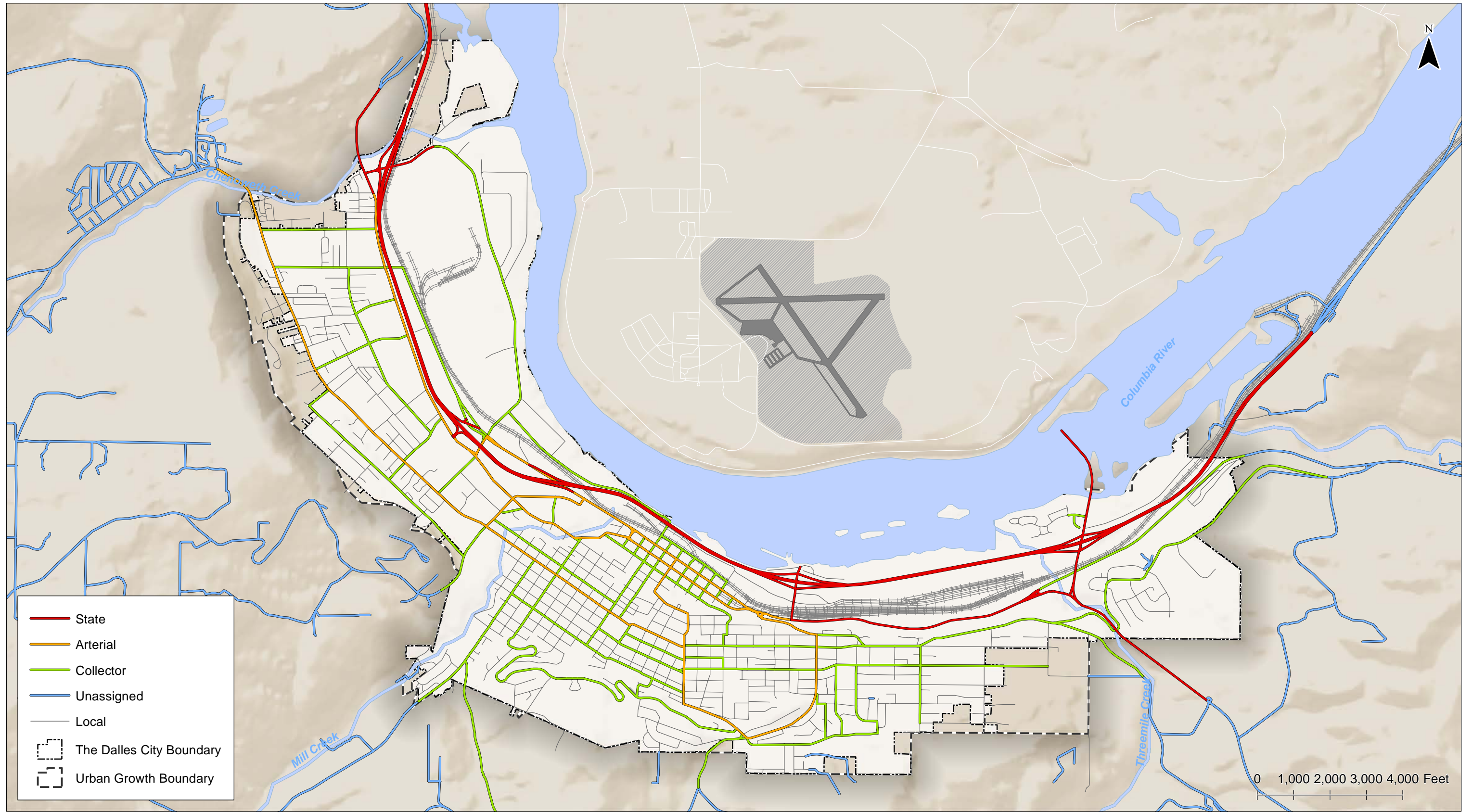


**Study Area**  
**The Dalles, Oregon** | **Figure 1**



Coordinate System: NAD 1983 StatePlane Oregon North FIPS 3601 Feet Intl  
Data Source: Wasco County  
Sources: Esri, USGS, NOAA





**Existing Functional Classifications  
The Dalles, Oregon**

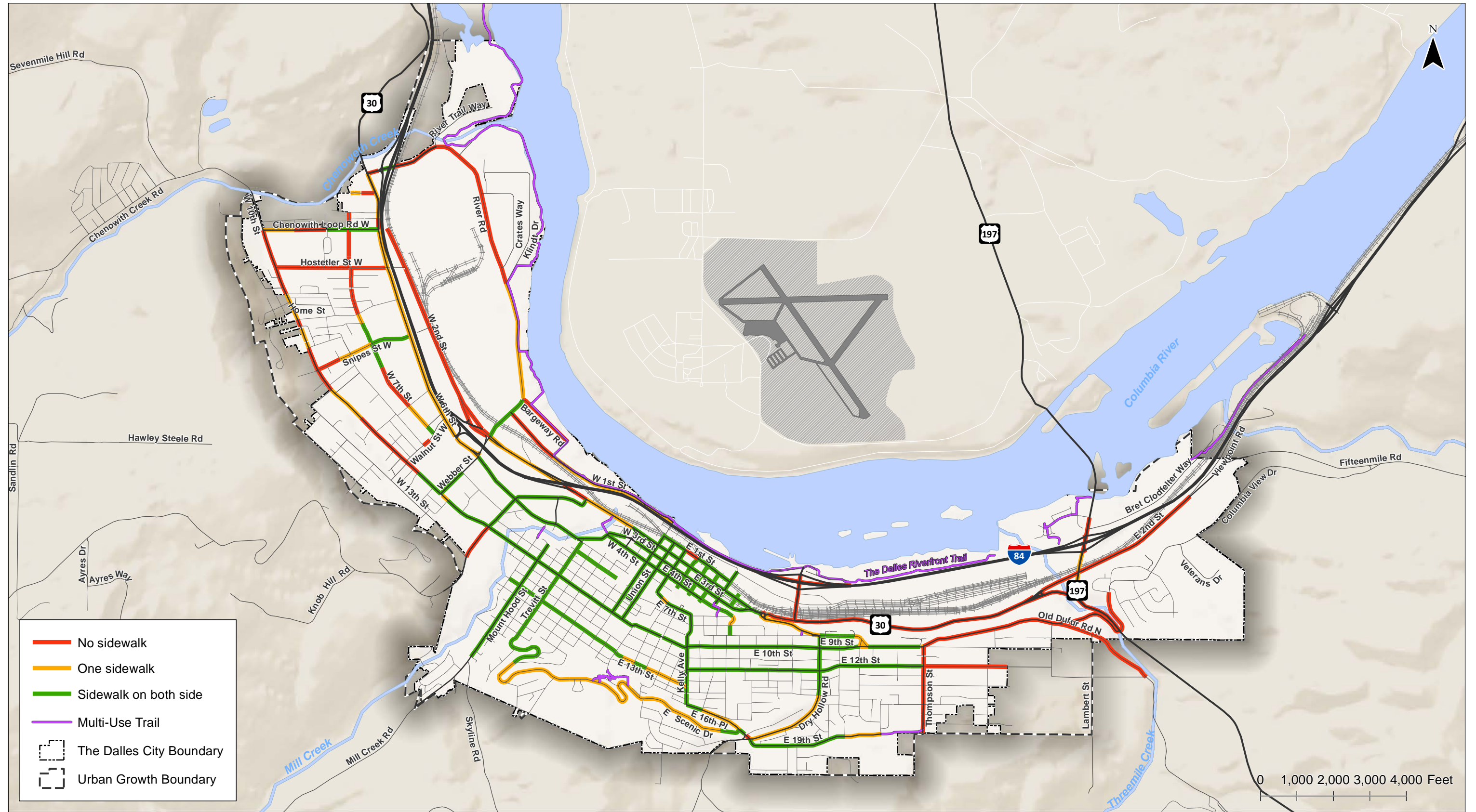
**Figure  
7**

H:\projects\16495 - The Dalles TSP\figs\07 Existing Functional Classifications.mxd - jommerville - 2:19 PM 11/2/2015



Coordinate System: NAD 1983 StatePlane Oregon North FIPS 3601 Feet Intl  
Data Source: Wasco County  
Sources: Esri, USGS, NOAA





Existing Sidewalks and Shared-use Paths  
The Dalles, Oregon

Figure  
11

W:\dalles\com\15\H\_Portal\proj\1518495 - The Dalles TSP\fig11 Existing Sidewalks and Shared-Use Paths.mxd - mtdel - 4:09 PM 11/18/2015



Coordinate System: NAD 1983 StatePlane Oregon North FIPS 3601 Feet Intl  
Data Source: Wasco County  
Sources: Esri, USGS, NOAA









**Existing Traffic Conditions  
Weekday PM Peak Hour  
The Dalles, Oregon**

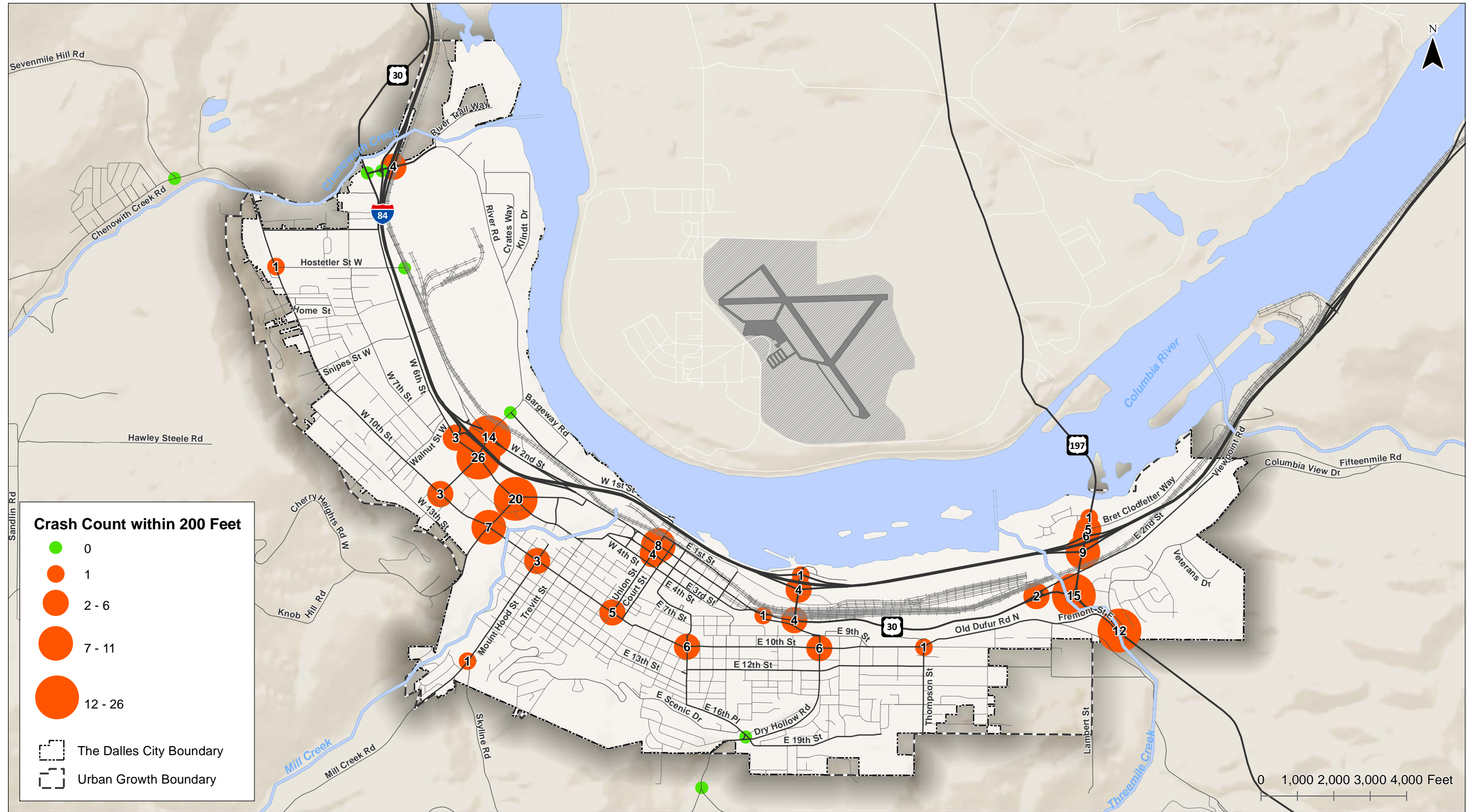
**Figure  
14**

W:\telson.com\is\H\_Portal\proj\14\_Existing Traffic Conditions - Weekday PM Peak Hour.mxd - mltuler - 5:38 PM 11/16/2015



Coordinate System: NAD 1983 StatePlane Oregon North FIPS 3601 Feet Intl  
Data Source: Wasco County  
Sources: Esri, USGS, NOAA





**Crash Frequency by Study Intersection  
The Dalles, Oregon**

**Figure  
16**

H:\projects\16495 - The Dalles TSP\figs\16 Crash Frequency by Study Intersection.mxd - somerville - 2:21 PM 11/12/2015

