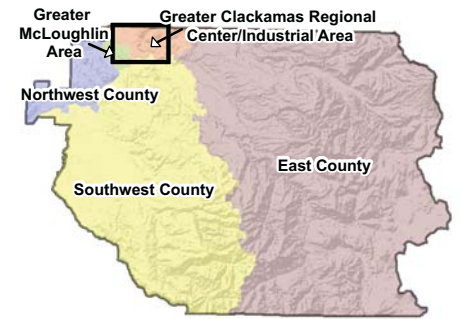




CLACKAMAS COUNTY TRANSPORTATION SYSTEM PLAN *Update*



Master List County Projects PAC Recommended Priority:

- Tier 1
- Tier 2
- Tier 3
- - - - Remove

Master List ODOT Projects Draft Recommended Priority:

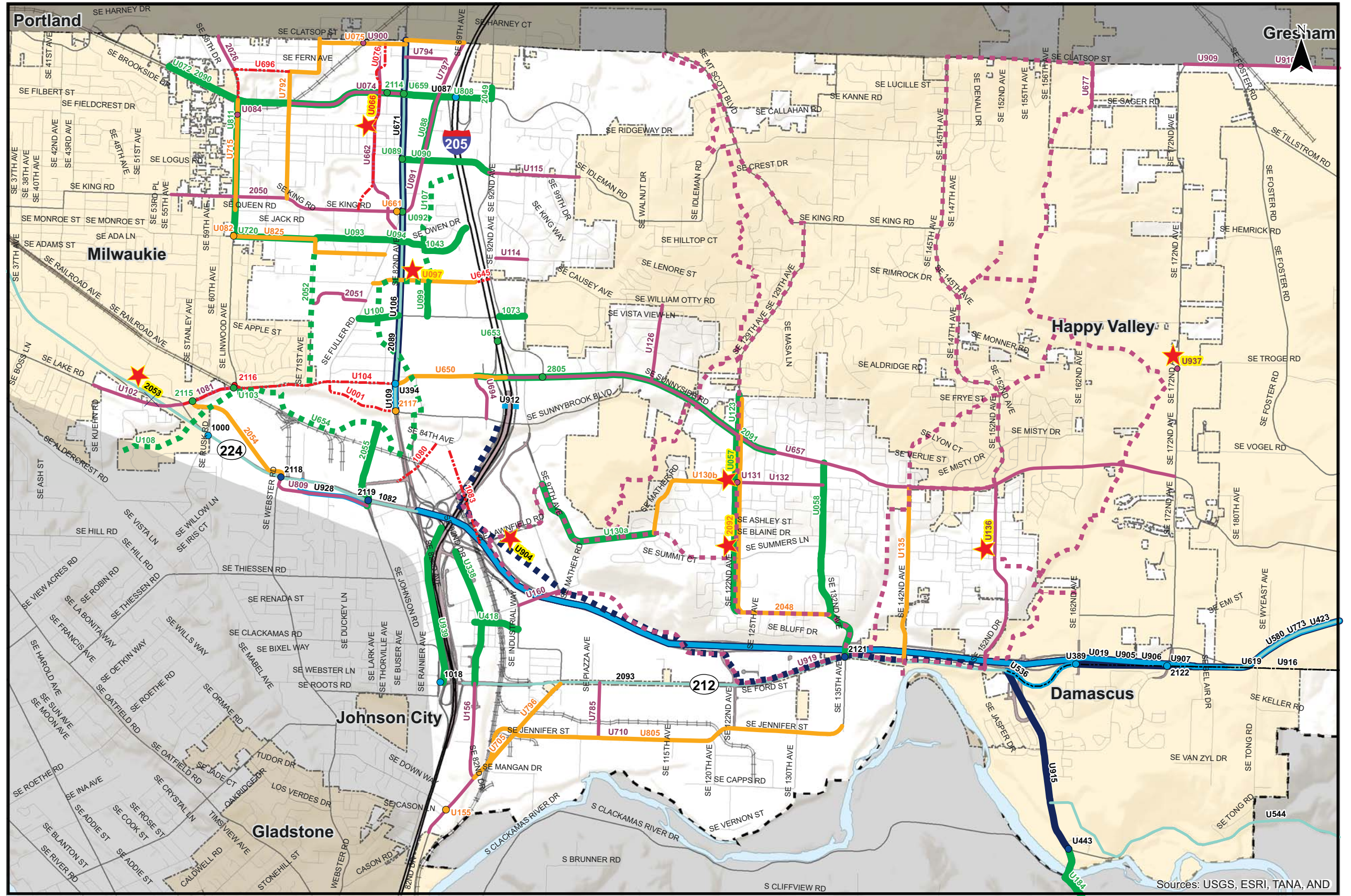
- High Priority
- Medium Priority
- Low Priority
- - - - Recommended for Removal

- Multi-Use Path
- Incorporated Areas
- County Boundary
- UGB

★ Indicates Project for Discussion

0 1 Miles

Coordinate System:
NAD 1983 HARN StatePlane Oregon North FIPS 3601 Feet Int
Data Source:
Clackamas County, Metro Data Resouce Center

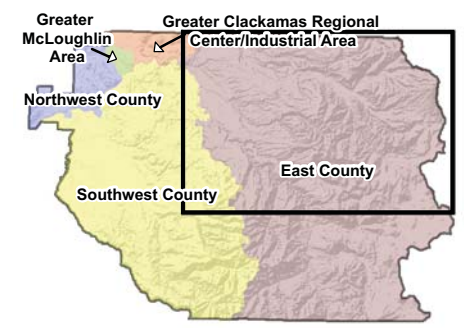
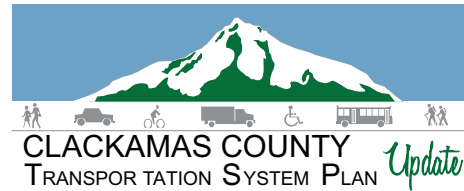


Sources: USGS, ESRI, TANA, AND

Master List Projects - PAC Recommendation Greater Clackamas Regional Center / Industrial Area

Figure
C MP

H:\profile\11732 - Clackamas County TSP\Task_12_Prioritization\Master List\May 2013 Master Projects_PAC Rec.mxd



Master List County Projects
PAC Recommended Priority:

- Tier 1
- Tier 2
- Tier 3
- - - - Remove

Master List ODOT Projects
Draft Recommended Priority:

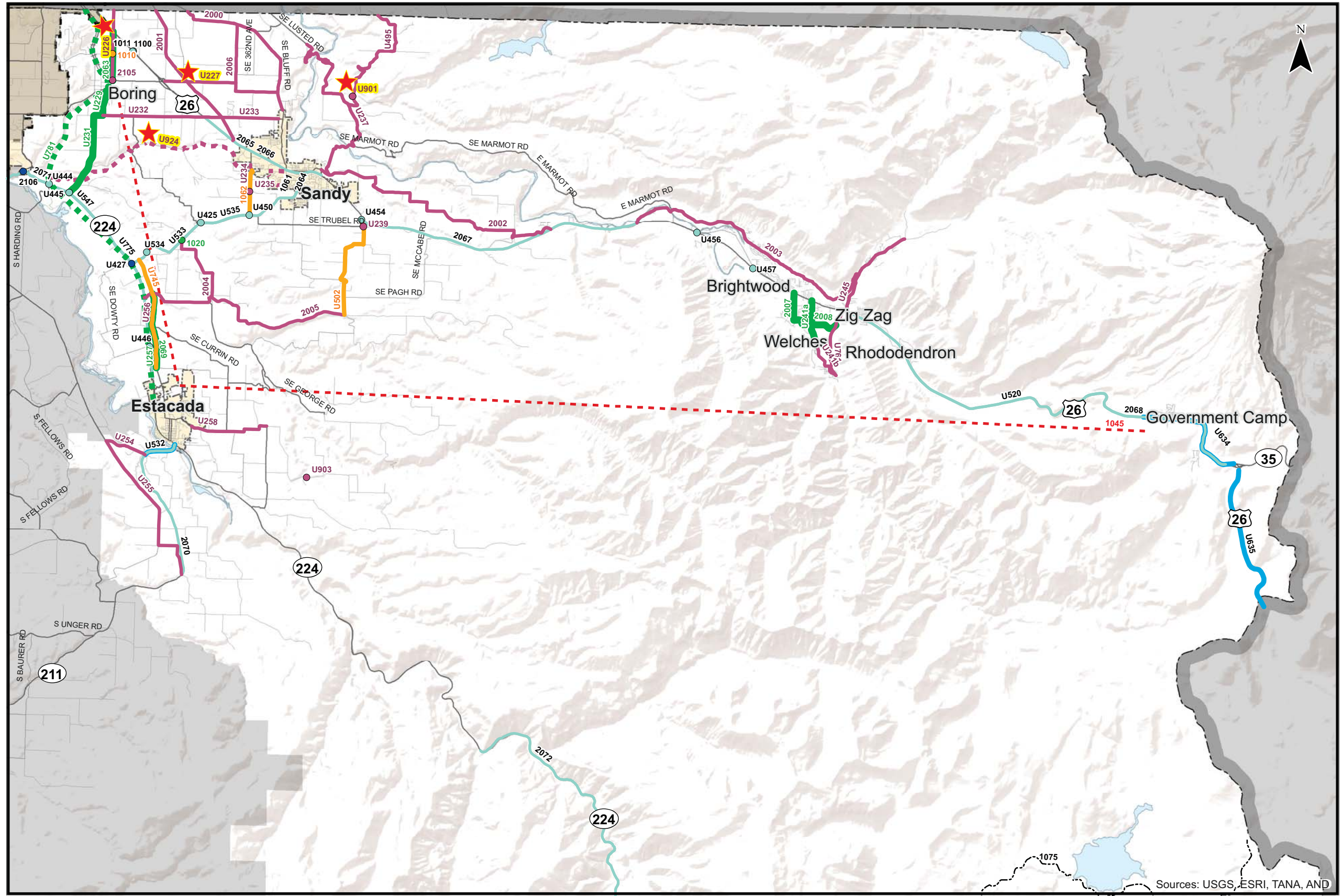
- High Priority
- Medium Priority
- Low Priority
- - - - Recommended for Removal

- ■ ■ ■ Multi-Use Path
- Incorporated Areas
- County Boundary
- UGB

★ Indicates Project for Discussion



Coordinate System:
NAD 1983 HARN StatePlane Oregon North FIPS 3601 Feet Int
Data Source:
Clackamas County, Metro Data Resouce Center

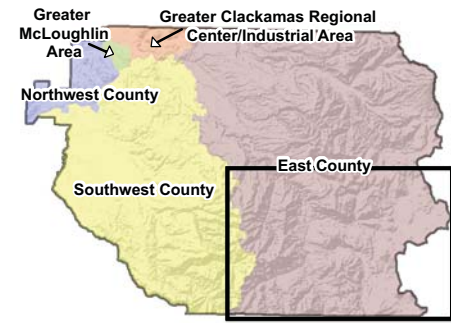
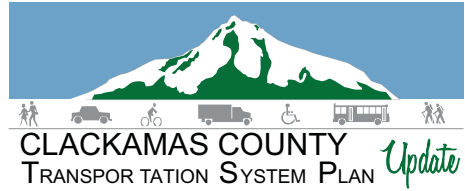


Sources: USGS, ESRI, TANA, AND

Master List Projects - PAC Recommendation
East County - Northern Portion

Figure
EN MP

H:\profile\11732 - Clackamas County TSP\Task_12_Prioritization\Master List\May 2013 Master Projects_PAC Rec.mxd



Master List County Projects

PAC Recommended Priority:

- Tier 1
- Tier 2
- Tier 3
- - - - Remove

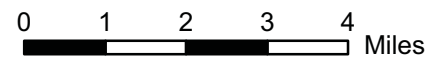
Master List ODOT Projects

Draft Recommended Priority:

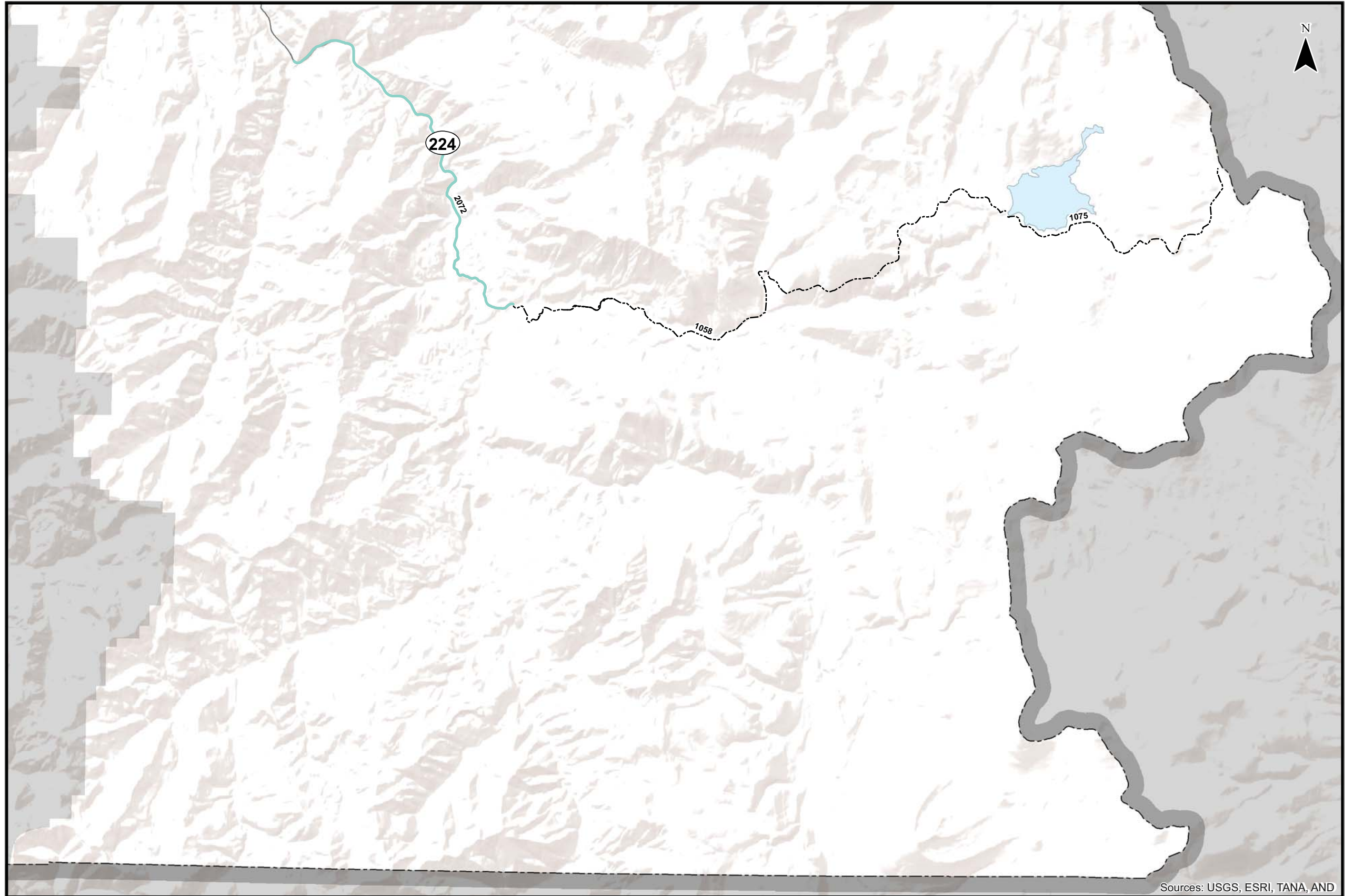
- High Priority
- Medium Priority
- Low Priority
- - - - Recommended for Removal

- - - - Multi-Use Path
- Incorporated Areas
- County Boundary
- UGB

★ Indicates Project for Discussion



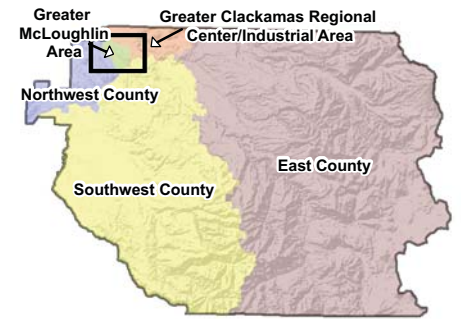
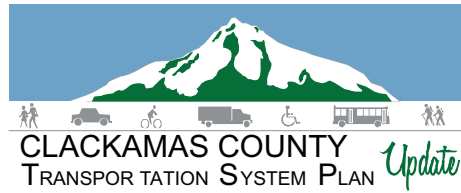
Coordinate System:
NAD 1983 HARN StatePlane Oregon North FIPS 3601 Feet Int'l
Data Source:
Clackamas County, Metro Data Resource Center



Sources: USGS, ESRI, TANA, AND

**Master List Projects - PAC Recommendation
East County - Southern Portion**

Figure
ES MP



Master List County Projects

PAC Recommended Priority:

- Tier 1 (Green line)
- Tier 2 (Orange line)
- Tier 3 (Purple line)
- Remove (Red dashed line)

Master List ODOT Projects

Draft Recommended Priority:

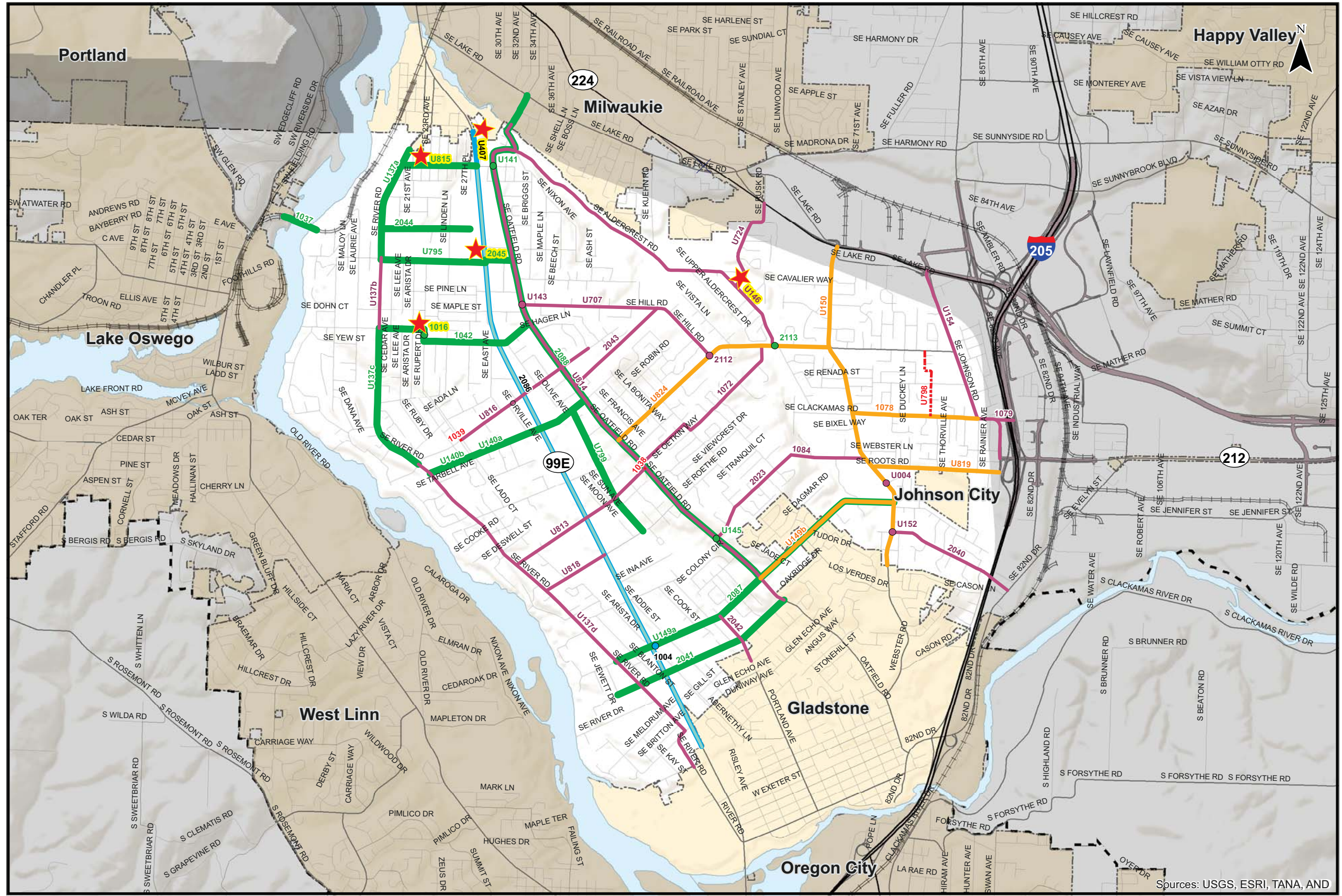
- High Priority (Dark blue line)
- Medium Priority (Light blue line)
- Low Priority (Light green line)
- Recommended for Removal (Black dashed line)

- Multi-Use Path (Black dashed line with squares)
- Incorporated Areas (Yellow shaded area)
- County Boundary (Black dashed line)
- UGB (Black dashed line)

★ Indicates Project for Discussion



Coordinate System: NAD 1983 HARN StatePlane Oregon North FIPS 3601 Feet Int Data Source: Clackamas County, Metro Data Resouce Center

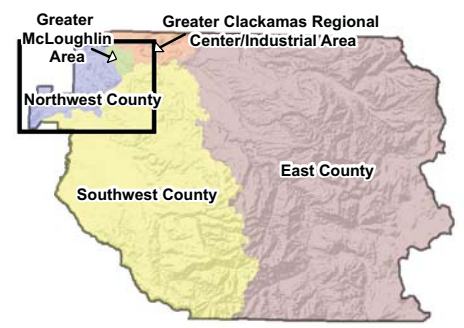
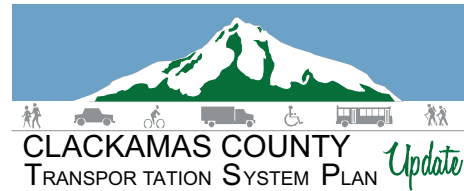


Sources: USGS, ESRI, TANA, AND

Master List Projects - PAC Recommendation Greater McLoughlin Area

Figure M MP

H:\profile\11732 - Clackamas County TSP\Task_12_Prioritization\Master List\May 2013 Master Projects_PAC Rec.mxd



Master List County Projects

PAC Recommended Priority:

- Tier 1
- Tier 2
- Tier 3
- - - - Remove

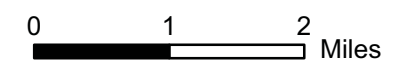
Master List ODOT Projects

Draft Recommended Priority:

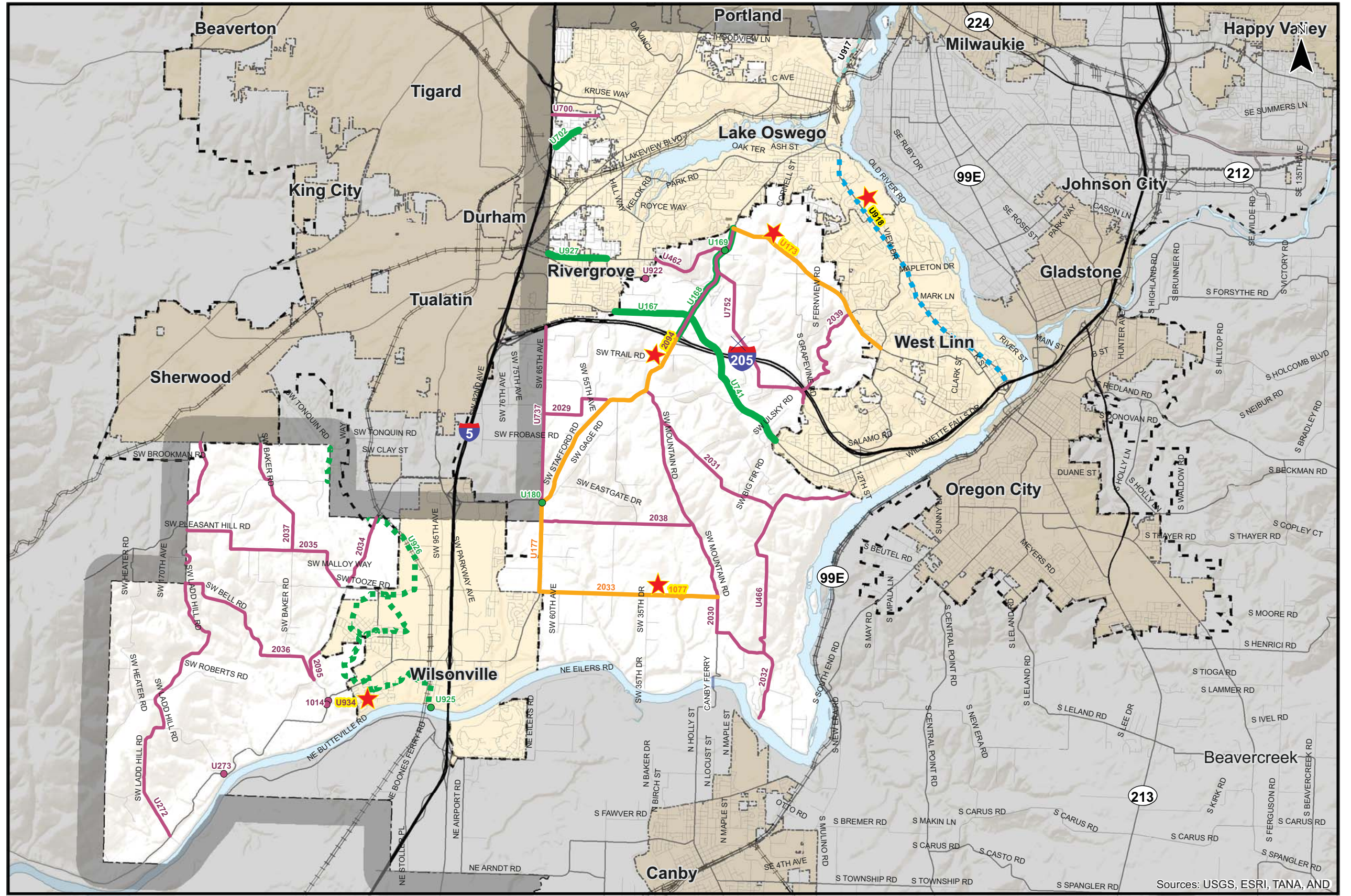
- High Priority
- Medium Priority
- Low Priority
- - - - Recommended for Removal

- Multi-Use Path
- Incorporated Areas
- County Boundary
- UGB

★ Indicates Project for Discussion



Coordinate System:
NAD 1983 HARN StatePlane Oregon North FIPS 3601 Feet Intl
Data Source:
Clackamas County, Metro Data Resouce Center

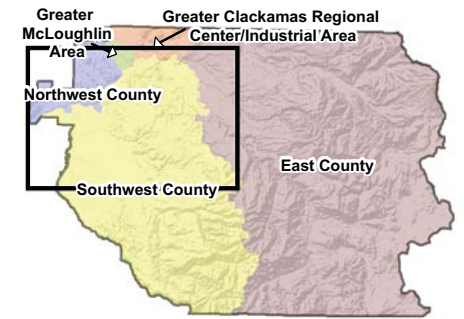
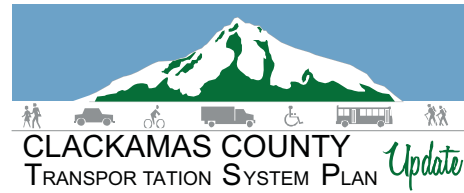


Master List Projects - PAC Recommendation
Northwest County

Figure
NW MP

Sources: USGS, ESRI, TANA, AND

F:\profile\11732 - Clackamas County TSP\Task_12_Prioritization\Master List\May 2013 Master Projects_PAC Rec.mxd



Master List County Projects

PAC Recommended Priority:

- Tier 1
- Tier 2
- Tier 3
- - - - Remove

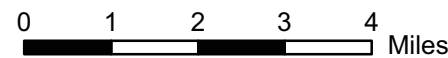
Master List ODOT Projects

Draft Recommended Priority:

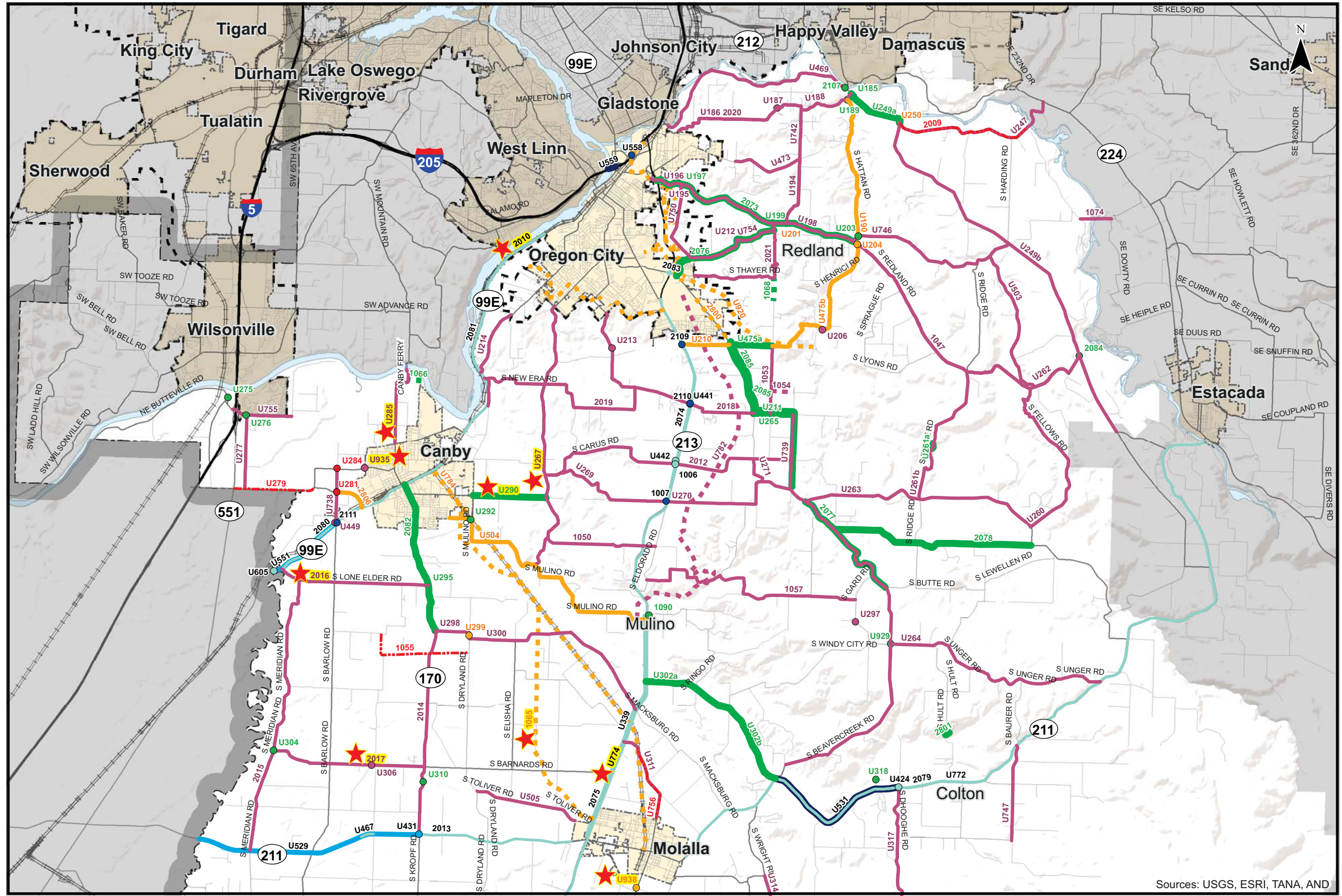
- High Priority
- Medium Priority
- Low Priority
- - - - Recommended for Removal

- Multi-Use Path
- Incorporated Areas
- County Boundary
- UGB

★ Indicates Project for Discussion



Coordinate System: NAD 1983 HARN StatePlane Oregon North FIPS 3601 Feet Intl
Data Source: Clackamas County, Metro Data Resouce Center

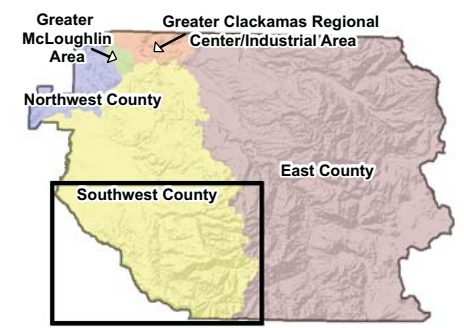
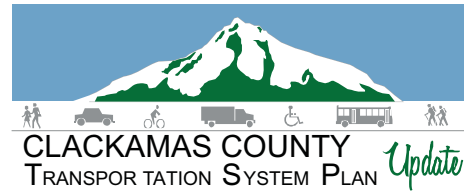


Sources: USGS, ESRI, TANA, AND

Master List Projects - PAC Recommendation
Southwest County - Northern Portion

Figure
SN MP

H:\profile\11732 - Clackamas County TSP\Task_12_Prioritization\Master List\May 2013 Master Projects_PAC Rec.mxd



Master List County Projects

PAC Recommended Priority:

- █ Tier 1
- █ Tier 2
- █ Tier 3
- - - - Remove

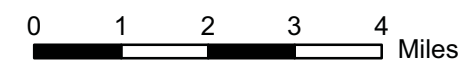
Master List ODOT Projects

Draft Recommended Priority:

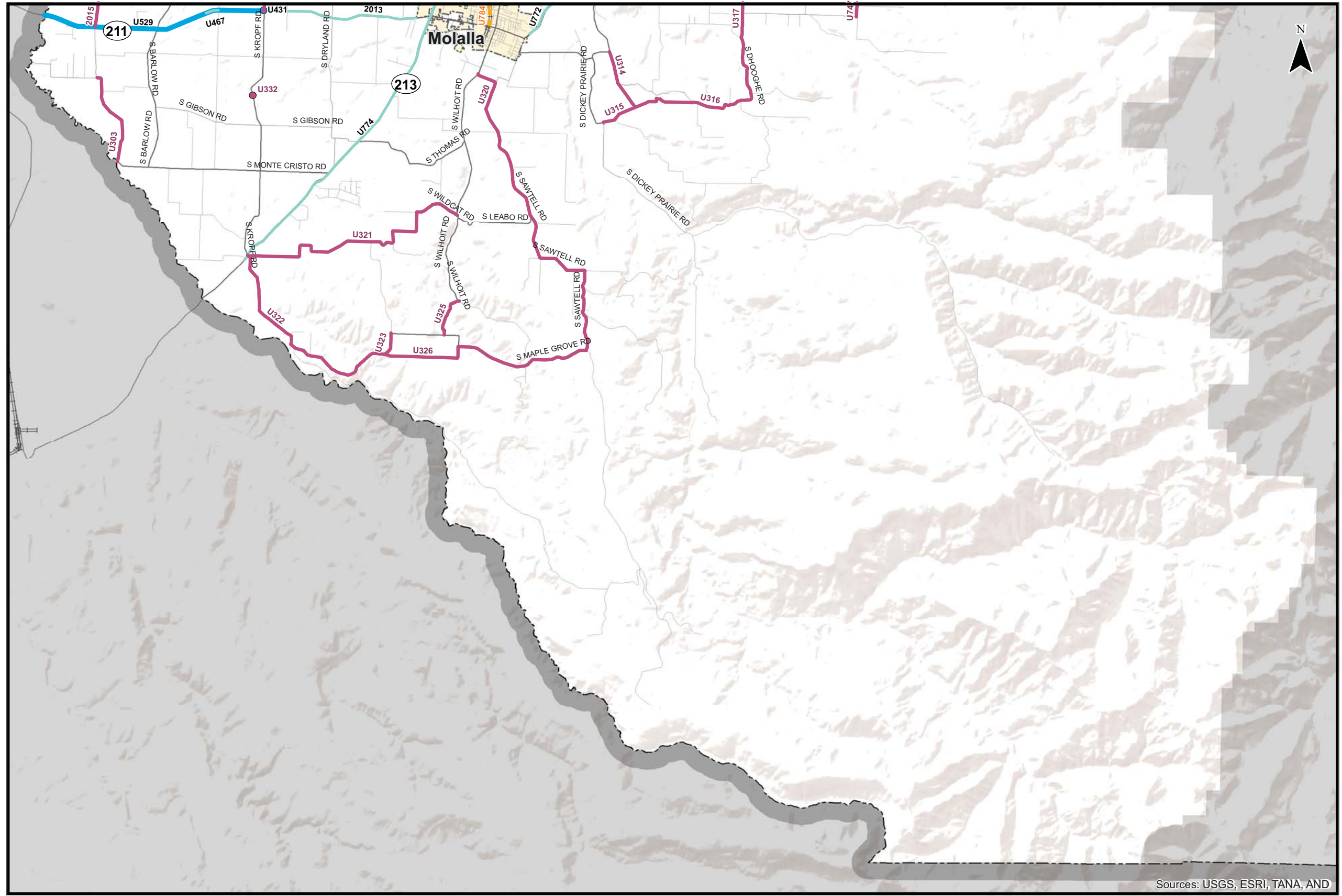
- █ High Priority
- █ Medium Priority
- █ Low Priority
- - - - Recommended for Removal

- █ Multi-Use Path
- Incorporated Areas
- County Boundary
- UGB

★ Indicates Project for Discussion



Coordinate System:
NAD 1983 HARN StatePlane Oregon North FIPS 3601 Feet Intl
Data Source:
Clackamas County, Metro Data Resouce Center



Sources: USGS, ESRI, TANA, AND

**Master List Projects - PAC Recommendation
Southwest County - Southern Portion**

Figure
SS MP

H:\profile\11732 - Clackamas County TSP\Task_12_Prioritization\Master List\May 2013 Master Projects_PAC Rec.mxd