

# Clackamas County Transportation System Plan Update

## TAC Meeting #5

August 29<sup>th</sup>, 2012



**KITTELSON & ASSOCIATES, INC.**  
TRANSPORTATION ENGINEERING/PLANNING

# Meeting Agenda

2:00 – 5:00 p.m.

- Meeting Purpose and Outcomes/ Agenda Overview
- Policy Paper “C”
- Review Project Evaluation Approach
- Discuss Project Evaluation Recommendations
  - Projects Recommended for Removal
  - Projects Recommended to be Added
- Alternative Analysis Scenarios
- Additional Comments
- Next Steps



# Meeting Objectives

- Provide input into policies currently under discussion
- Review and discuss projects recommended for removal from the “Previously Planned Projects” and “Public Suggested Projects” lists
- Confirm proposed additions in the “New Identified Projects” list
- Provide input into the draft project evaluation recommendations
- Discuss alternatives analysis scenarios



# Policy Paper “C”

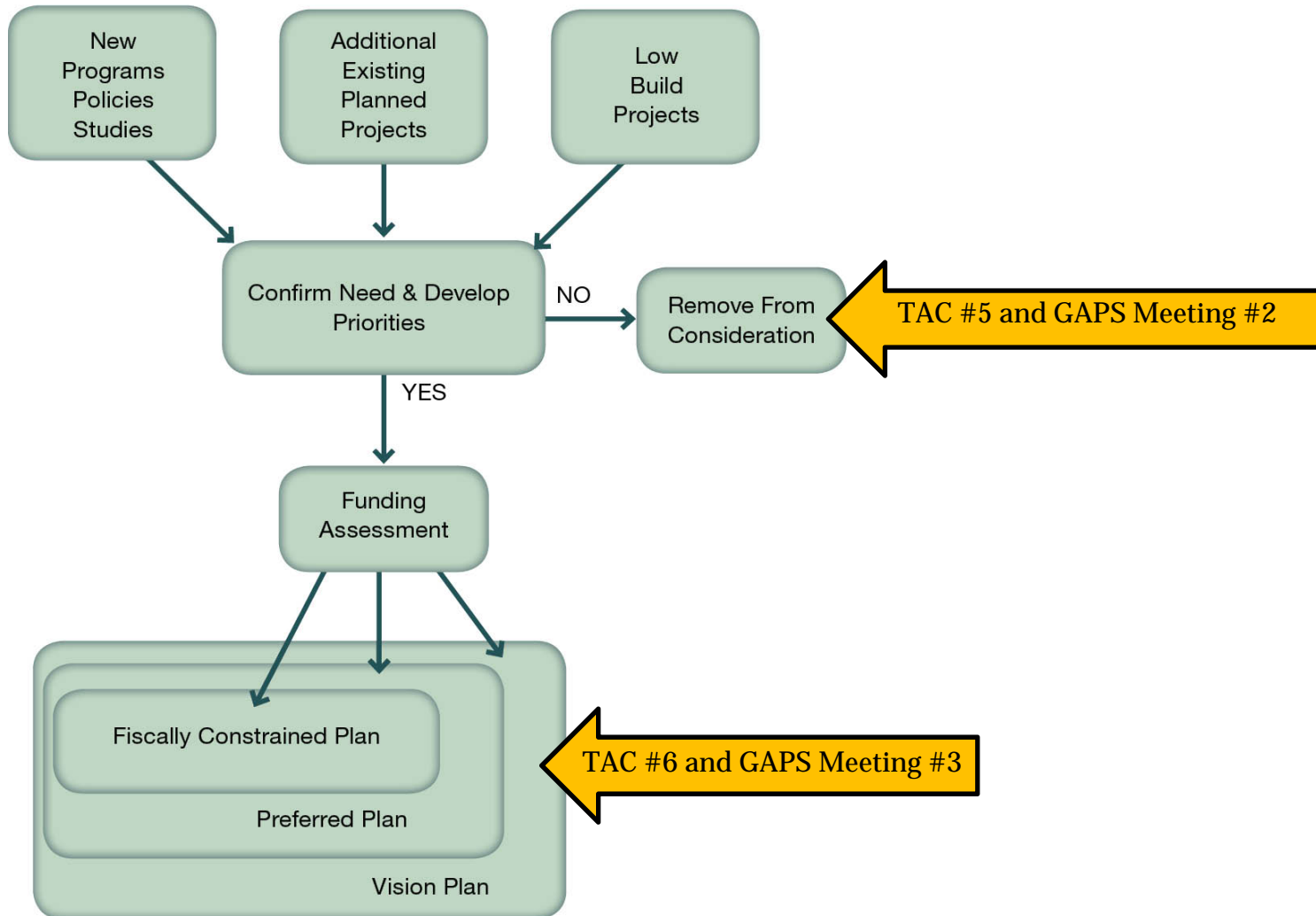
## > Key Questions:

1. Do we need a general policy on the integration of Rural Land Use and Transportation?
2. Should we modify the rural access standards so that they are based on the speed of the road?
3. Do we need a policy concerning agricultural equipment on the roadway?
4. Do we need specific policies for safety and road conditions?
5. Do we need specific parking policies for the rural area?
6. Which policies should be used to address equestrian issues in the County?





# Project Evaluation Process



# Project Evaluation Approach

- Identified Projects
  - Projects previously identified as needed
  - Project suggested by the public
- Used what was learned in the “Existing Conditions” report to help determine if projects were still needed
- Made an assessment of how each project supported the goals
- Determined if additional projects were needed
- Sounds simple, but....it was a very iterative process



# Project Evaluation Approach

- Evaluation of three lists of transportation projects:
  - Previously Planned Projects
  - Public Suggested Projects
  - New Identified Projects

# Previously Planned Projects

- These project were identified in the following existing plans
  - Clackamas County TSP (Chapter 5)
  - Clackamas County Pedestrian Master Plan
  - Clackamas County Bicycle Master Plan
  - Regional Transportation Plan



# Public Suggested Projects

- Developed based on public input
- Identified comments that suggested a project not already addressed by a Previously Planned Project

## CLACKAMAS COUNTY TSP — VIRTUAL WORKSHOP #1

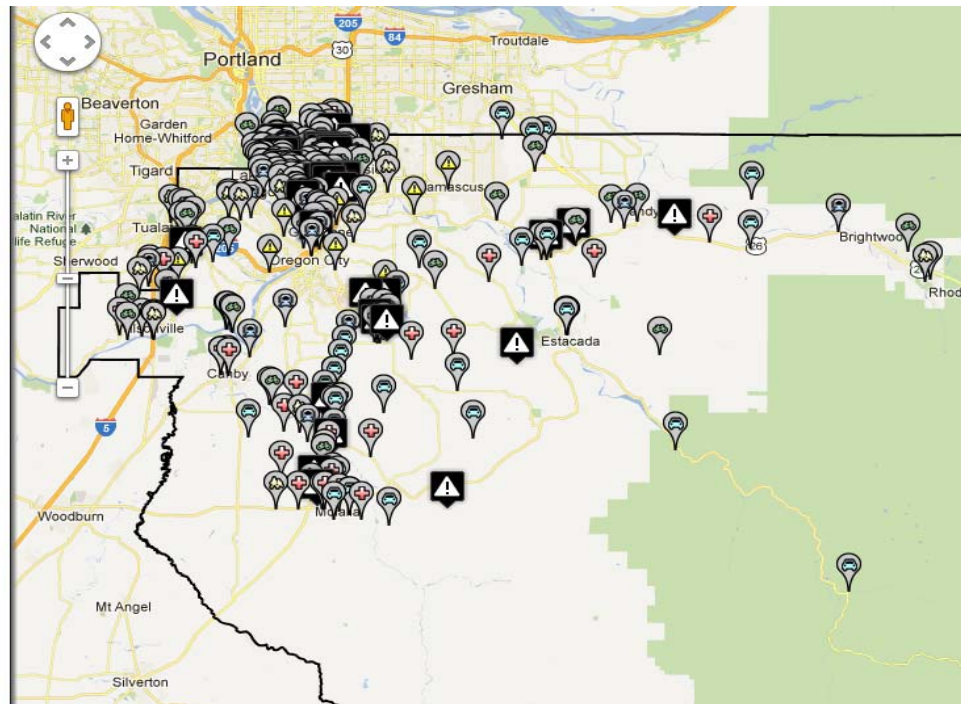
Please tell us your ideas, concerns, and thoughts regarding the transportation system in the County.

[View a list of existing comments →](#)

Having trouble viewing or using the map? Please contact Erin Ferguson at [eferguson@kittelson.com](mailto:eferguson@kittelson.com) with your comments.

© 2007-2012 Kittelson & Associates, Inc. unless otherwise noted.

[Admin login](#)



# New Identified Projects

- Identified remaining gaps and deficiencies
  - Previously Planned Projects and Public Suggested Projects overlaid on maps of the gaps and deficiencies projected for 2035
  - Revealed gaps and deficiencies not already addressed by projects
- Developed projects with TSP Vision, Goals, and Objectives in mind
- Include roadway, pedestrian, bicycle, safety, and transit projects



# Project Evaluation Approach

- Applied evaluation measures and criteria
- Assessed projects and determined:
  - Projects to include in the TSP Update Master Project List
  - Projects that need refinement
  - Projects that should not be carried forward for additional evaluation
- Results shown on project lists



# Project Evaluation Approach

## Evaluation Considerations

- Addresses a Gap? (Yes or No)

*A gap is defined as missing facilities or connections in the sidewalk system, the bicycle network and roadway connections, and densely populated areas without transit service.*

- Addresses a Deficiency? (Yes or No)

*A deficiency is defined as facilities that do not perform up to defined standards, such as an intersection with too much delay and congestion, a sidewalk or bicycle lane that is too narrow, or a roadway with a poor safety history.*

- Impact on Transportation System

*Description of how a project fills a gap or addresses a deficiency, if relevant.*





# Project Evaluation Approach

## > TSP Goal Assessment

*Determine whether project supports each goal based on data generated for the Existing and Future Conditions Report.*

○ = does not support goal,

◐ = somewhat supports goal, and

● = definitely supports goal.

- Goal 1 = Sustainable
- Goal 2 = Local Businesses and Jobs
- Goal 3 = Livable and Local
- Goal 4 = Safety and Health
- Goal 5 = Equity
- Goal 6 = Fiscally Responsible



# Project Evaluation Approach

- Three possible actions recommended for the project, based on the evaluation:
  - Advance in evaluation process
    - Project successfully addresses a gap or deficiency, or definitely supports at least 4 of the 6 goals*
  - Advance in evaluation process but revise
    - Project attempts to address a gap or deficiency, but does not do so successfully or fully/somewhat supports 3 of the 6 goals*
  - Consider removing
    - Project does not address a gap or deficiency and does not fully/somewhat support at least 3 of the 6 goals*

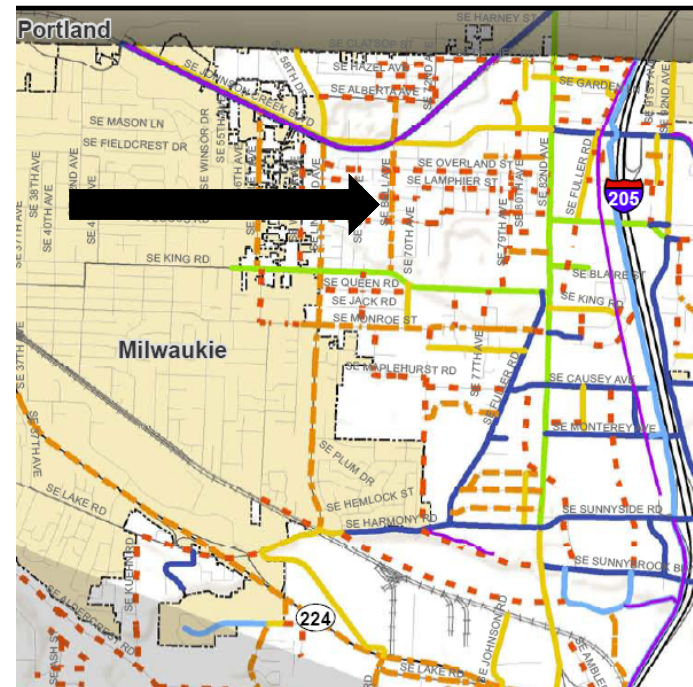


# Project Evaluation Approach: Example

- **TSP Update ID:** U792
- **Project Name/Street Name:** Bell Ave / Alberta St / 72nd Ave
- **Segment/Locations:** King Rd to County line
- **Project Description:** Add pedways and bikeways
- **Geographic Sub Area:** Clackamas Regional Center/ Industrial Area

## Pedestrian Network

- Sidewalks
- 76% to 99% Complete
- 51% to 75% Complete
- 26% to 50% Complete
- - - 1% to 25% Complete
- - - No Sidewalks
- Multi-Use Path



# Project Evaluation Approach: Example

- Used mapping from *Existing and Future Conditions* Report and evaluation criteria to evaluate project on each goal

TSP Update ID	Project Name/ Street Name	Segment/ Locations	Project Description	Addresses a Gap?	Addresses a Deficiency?	Impact on Transportation System	TSP Goal Assessment of Project						Action
							Goal 1	Goal 2	Goal 3	Goal 4	Goal 5	Goal 6	
U792	Bell Ave / Alberta St / 72nd Ave	King Rd to County line	Add pedways and bikeways	Yes	No	Improves pedestrian and bicycle network connectivity	●	◐	●	●	●	◐	Advance in Evaluation Process

#

Goal 1 = Sustainable, Goal 2 = Local Businesses and Jobs, Goal 3 = Livable and Local, Goal 4 = Safety and Health, Goal 5 = Equity, Goal 6 = Fiscally Responsible

# Project Evaluation Recommendations

- Result of Project Evaluation Process:
  - Initial recommendation for each project under 'Action'
  - Receive feedback from TAC, GAPS, PAC and public
  - Develop single TSP Update Master Project List
- Tables and maps created for Public Suggested Projects and New Identified Projects
  - *Attachment 2 and Attachment 3*
- Tables and maps created for Previously Planned Projects, divided by sub-area
  - *Attachment 4*



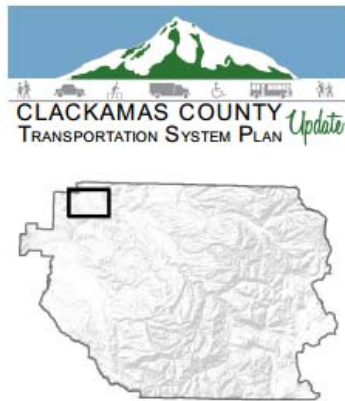
# Confirm Projects for Removal

- Are there any projects identified for removal on the “Previously Planned Projects” list or the “Public Suggested Projects” list that TAC members would like to specifically discuss?



# Projects for Removal

- Projects to consider removing from alternatives analysis based on evaluation process
  - Previously Planned Projects
  - Public Suggested Projects



### Roadway, Bicycle, and Pedestrian Projects

----- "Consider Removing"

✗ "Consider Removing"

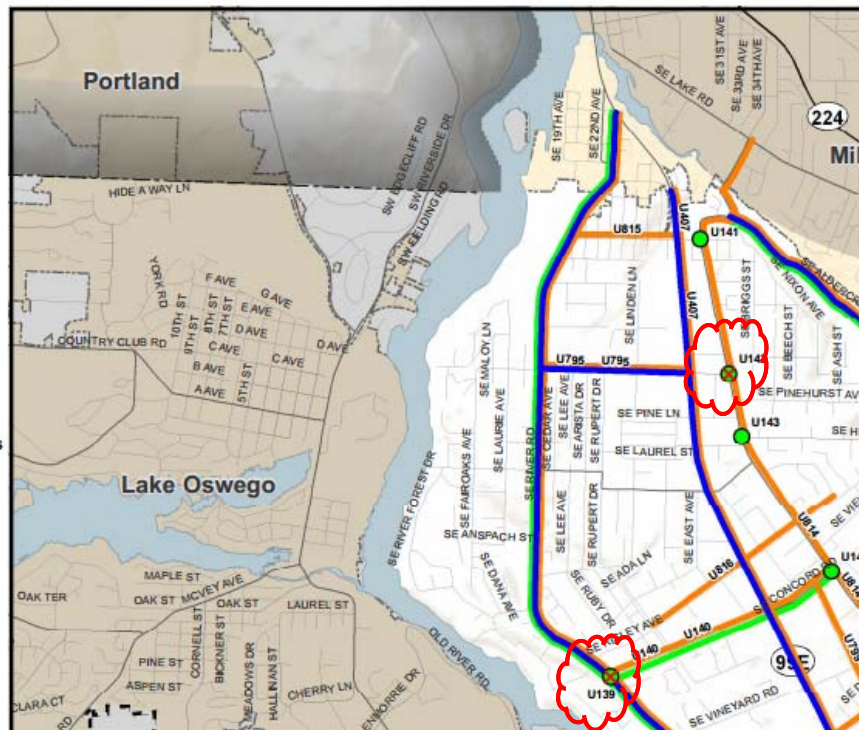
----- Roadway

----- Pedestrian

----- Bicycle

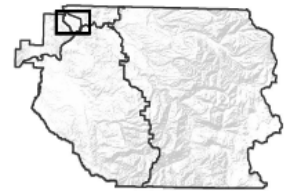
----- Incorporated Areas

----- County Boundary



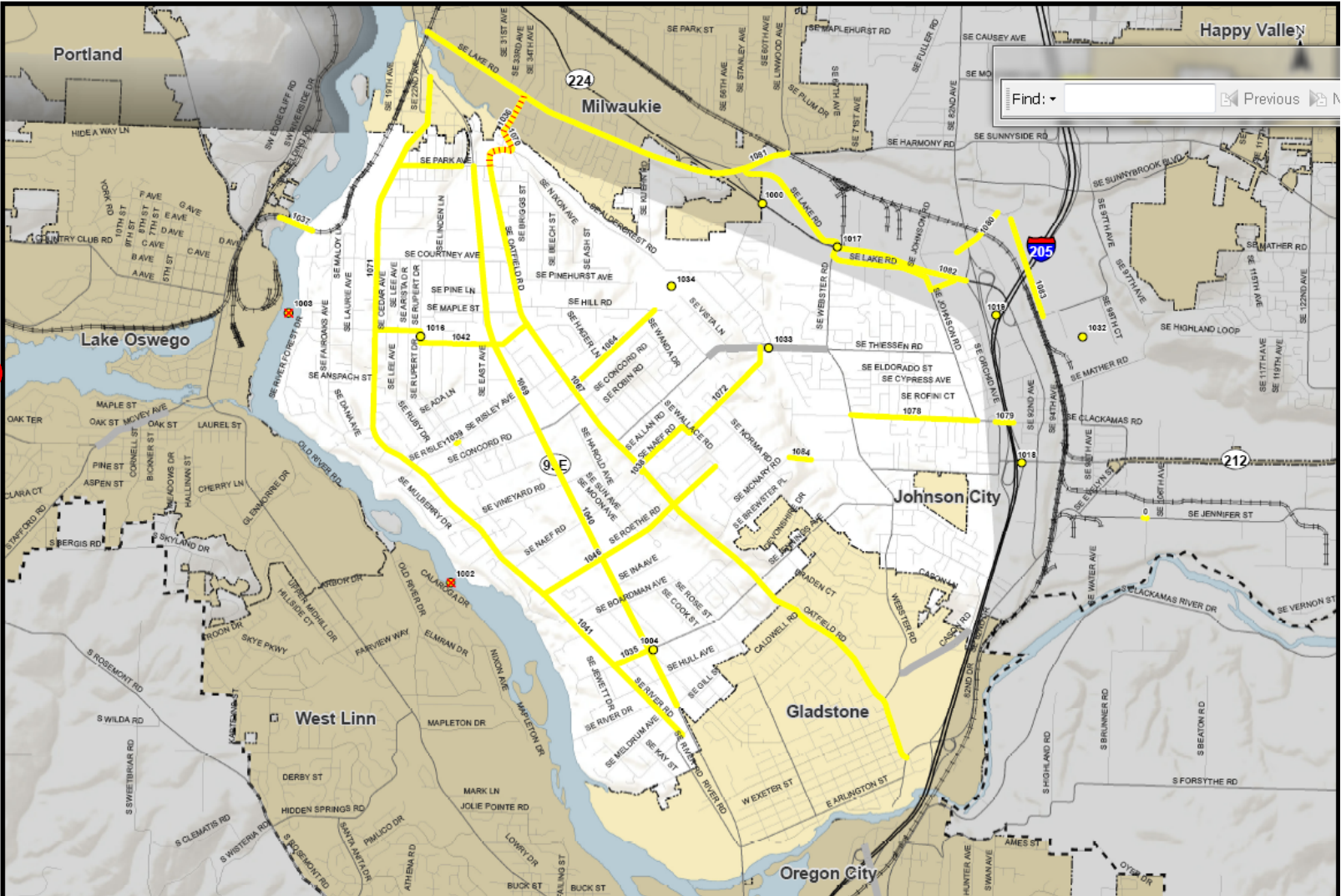


# Projects for Removal



### Public Suggested Projects

- ||||| "Consider Removing"
- ✗ "Consider Removing"
- Line
- Point
- Shoulders (At Least 4ft Wide)
- Incorporated Areas
- - - County
- - - UGB



0 1 Miles

Public Suggested Projects  
Greater McLoughlin Area

Figure  
M P

Coordinate System:  
NAD 1983 HARN StatePlane Oregon North FIPS 3601 Feet Intl  
Data Source:  
Clackamas County Metro Data Resource Center



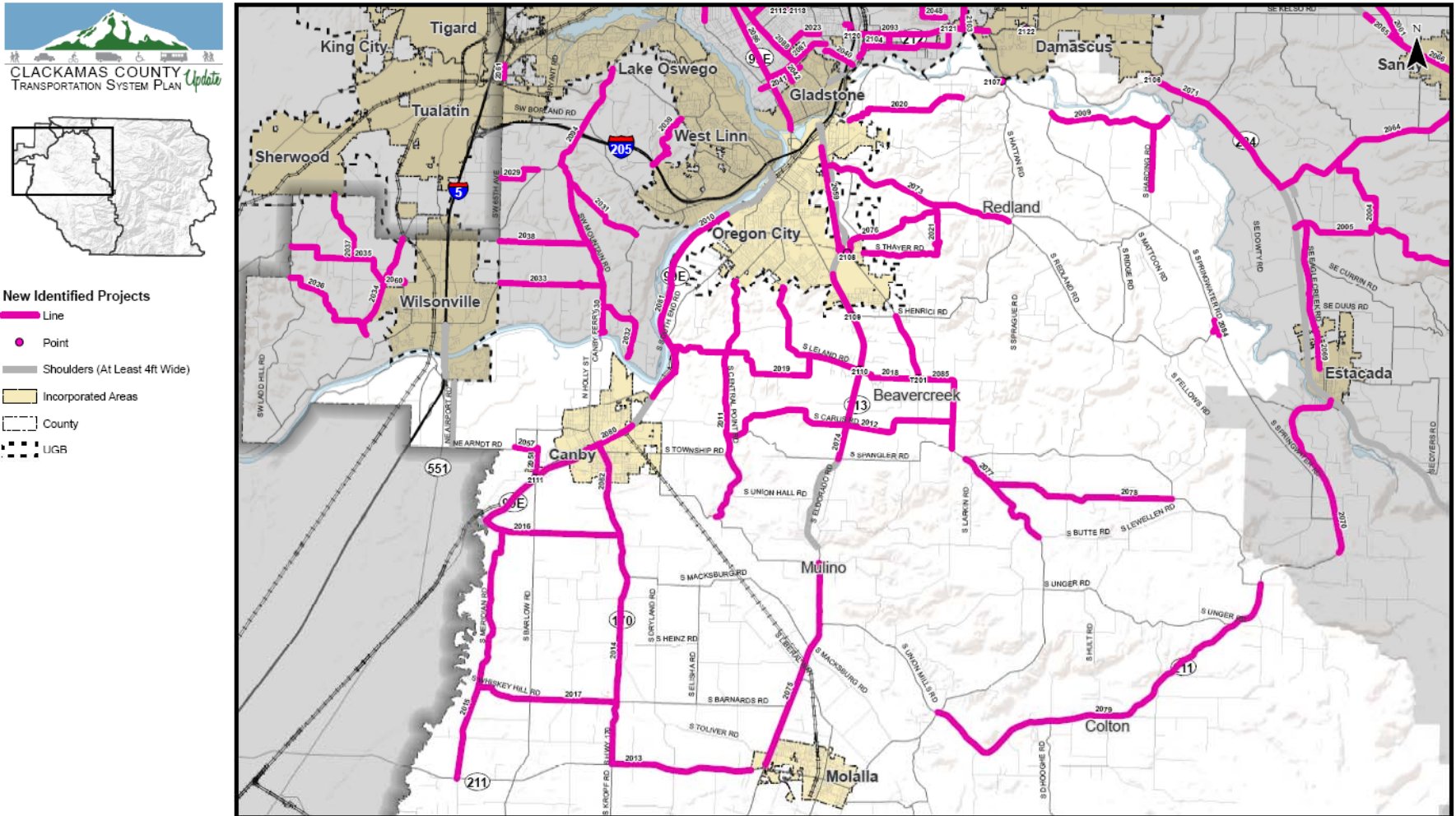
# Confirm New Identified Projects

- Are there any of the New Identified Projects that TAC members would like to specifically discuss?



# Projects for Addition

## > New Identified Projects



Coordinate System:  
 NAD 1983 HARN StatePlane Oregon North FIPS 3601 Feet Intl  
 Data Source:  
 Clackamas County, Metro Data Resource Center

**New Identified Projects  
 Southwest County - Northern Portion**

Figure  
 SN P

# Project Evaluation Recommendations

- Any specific project evaluations that the TAC members would like to discuss?



# Alternative Analysis Scenarios

In addition to identifying individual projects to address specific system gaps and deficiencies, the alternatives analysis evaluates larger system alternatives or scenarios, including:

1. Major Project Alternatives
2. Assumptions Scenarios
3. Policy Scenarios

# Additional Comments



# Next Steps

- Policy Working Group Meeting #4 (August 30)
- Virtual Open House (September 9 – October 1)
- Area Open House #2 (September 11)
- GAPS Meetings #2 (September 10-18)
- Policy Working Group Meeting #5 (September 27)
- PAC #4B (October 16)
- GAPS Meetings #3 (November)
- **TAC Meeting #6 (November)**
  - Confirm project evaluation results
  - Discuss Alternatives Analysis Scenario Findings
  - Review Draft Preferred Project List
  - Discuss Project Priorities

