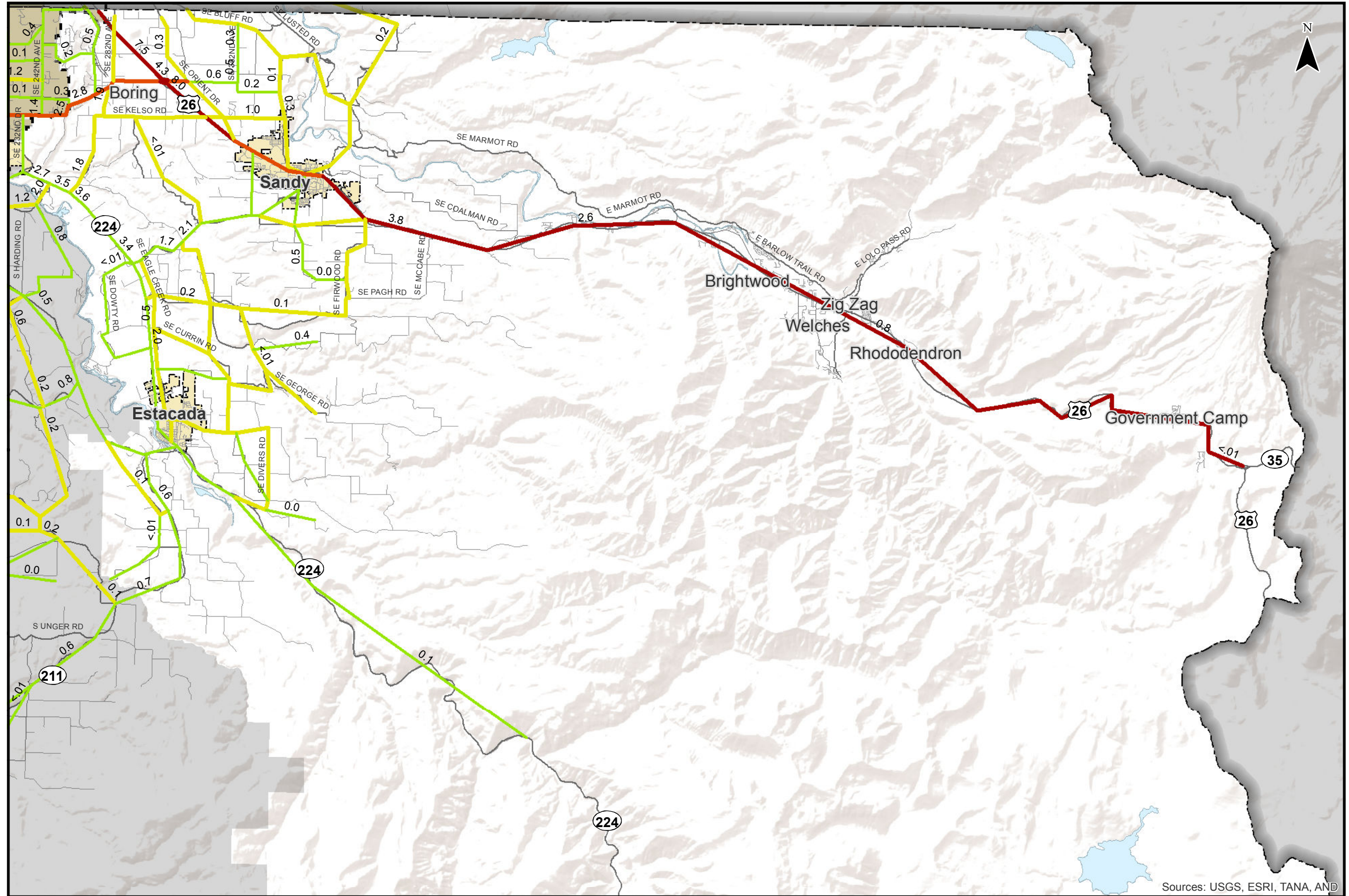
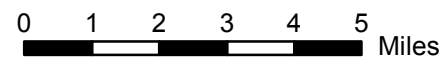


2035 Tier 1 Scenario Volumes

- Freeway
- Principal / Major Arterial
- Minor Arterial
- Other
- ## PM Weekday Traffic Volume in Thousands
- Incorporated Areas
- County Boundary
- UGB



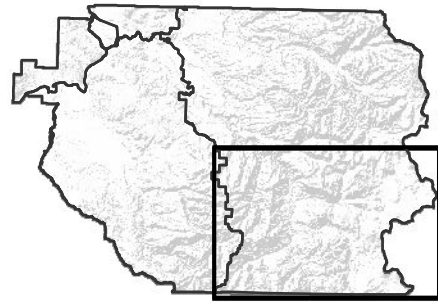
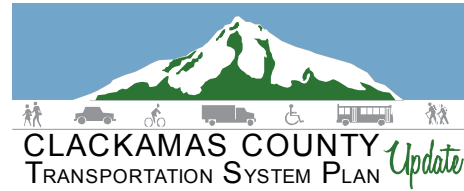
Sources: USGS, ESRI, TANA, AND



Coordinate System:
NAD 1983 HARN StatePlane Oregon North FIPS 3601 Feet Intl
Data Source:
Cambridge Systematics, Clackamas County,
Metro Data Resource Center

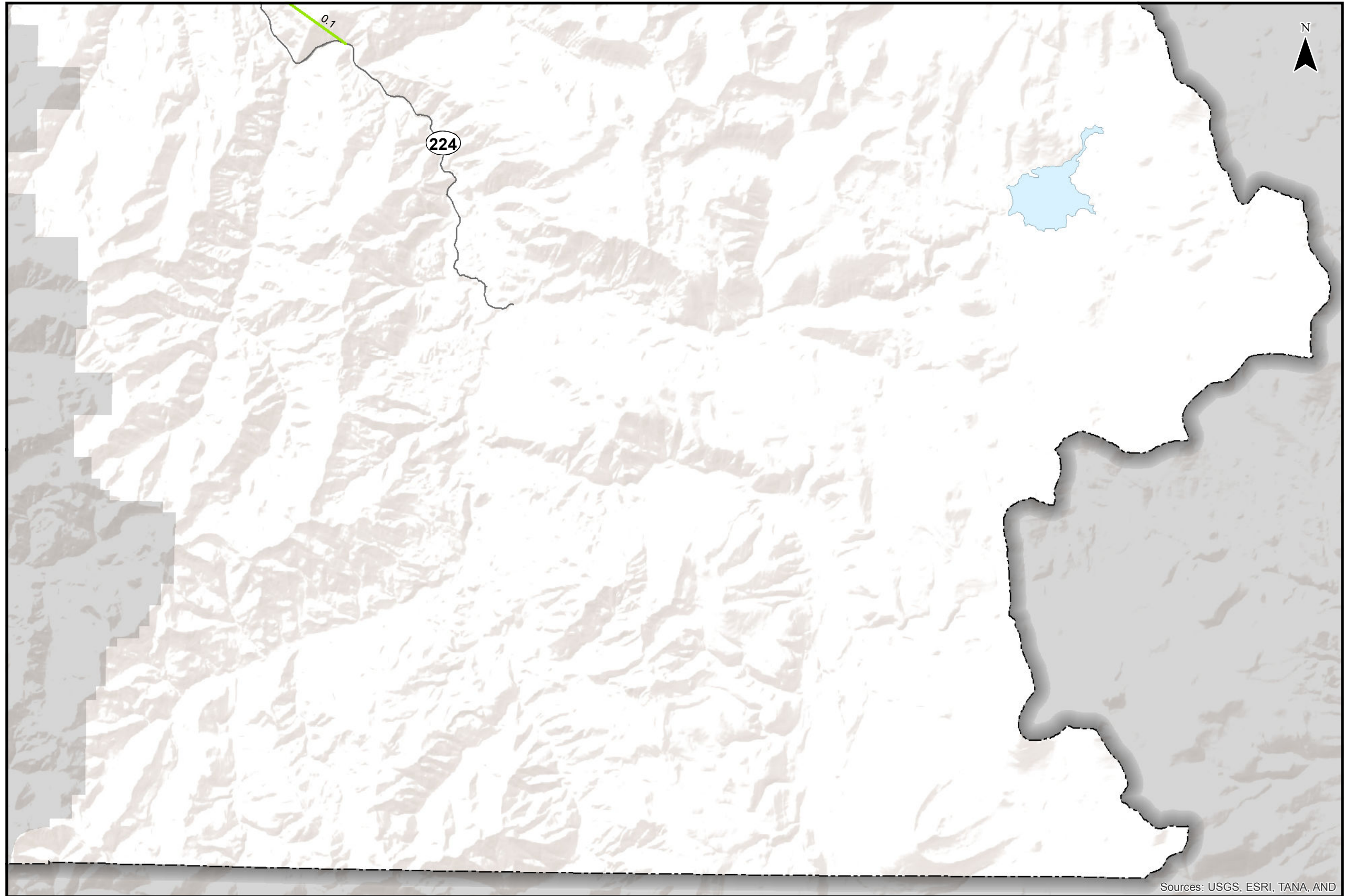
**Evening Weekday Peak Hour Link Volumes 2035 Tier 1 Scenario
East County - Northern Portion**

Figure
EN T1



2035 Tier 1 Scenario Volumes

- Freeway
- Principal / Major Arterial
- Minor Arterial
- Other
- #.#** PM Weekday Traffic Volume in Thousands
- Incorporated Areas
- County Boundary
- UGB



Sources: USGS, ESRI, TANA, AND

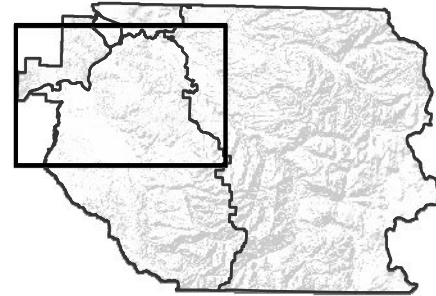
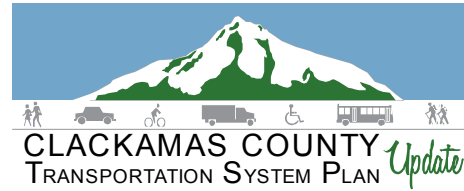
0 1 2 3 4 Miles

Coordinate System:
NAD 1983 HARN StatePlane Oregon North FIPS 3601 Feet Intl
Data Source:
Cambridge Systematics, Clackamas County,
Metro Data Resource Center

**Evening Weekday Peak Hour Link Volumes 2035 Tier 1 Scenario
East County - Southern Portion**

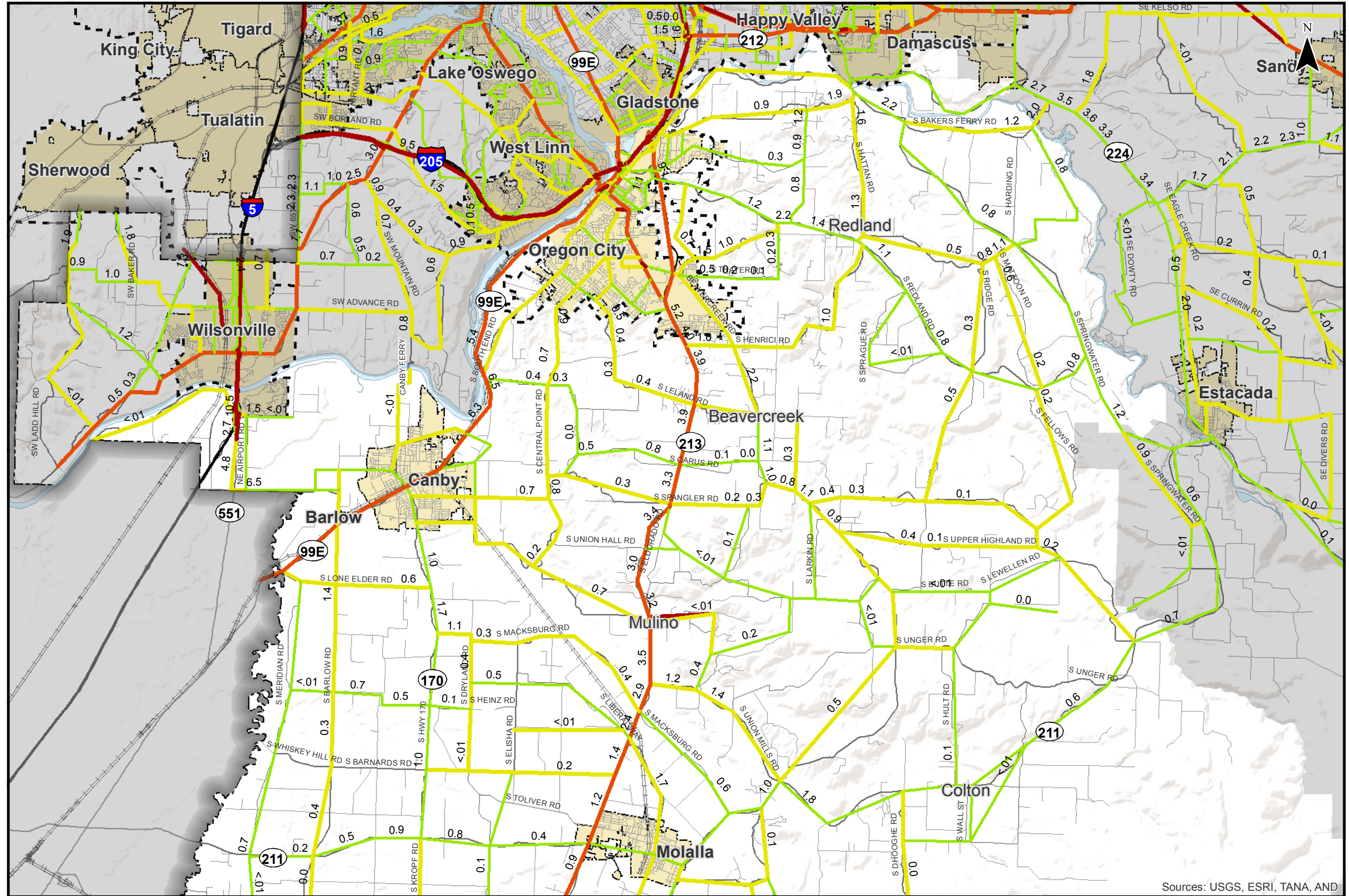
Figure
ES T1

H:\profile11732 - Clackamas County TSP\Task_12_PrioritizationMaster List\Evening Weekday Peak Hour Link Volumes 2035 Tier 1 Scenario.mxd

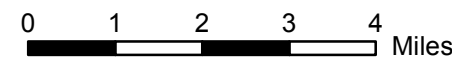


2035 Tier 1 Scenario Volumes

- Freeway
- Principal / Major Arterial
- Minor Arterial
- Other
- ## PM Weekday Traffic Volume in Thousands
- Incorporated Areas
- County Boundary
- UGB



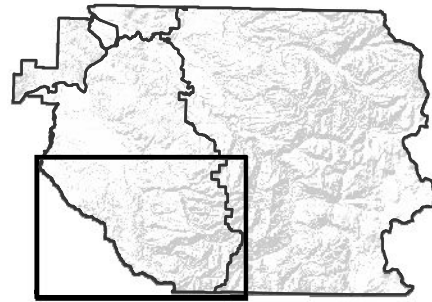
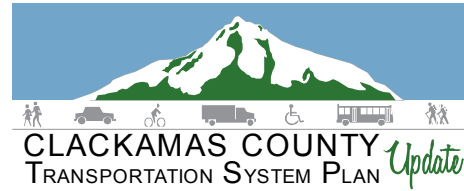
Sources: USGS, ESRI, TANA, AND



Coordinate System:
NAD 1983 HARN StatePlane Oregon North FIPS 3601 Feet Intl
Data Source:
Cambridge Systematics, Clackamas County,
Metro Data Resource Center

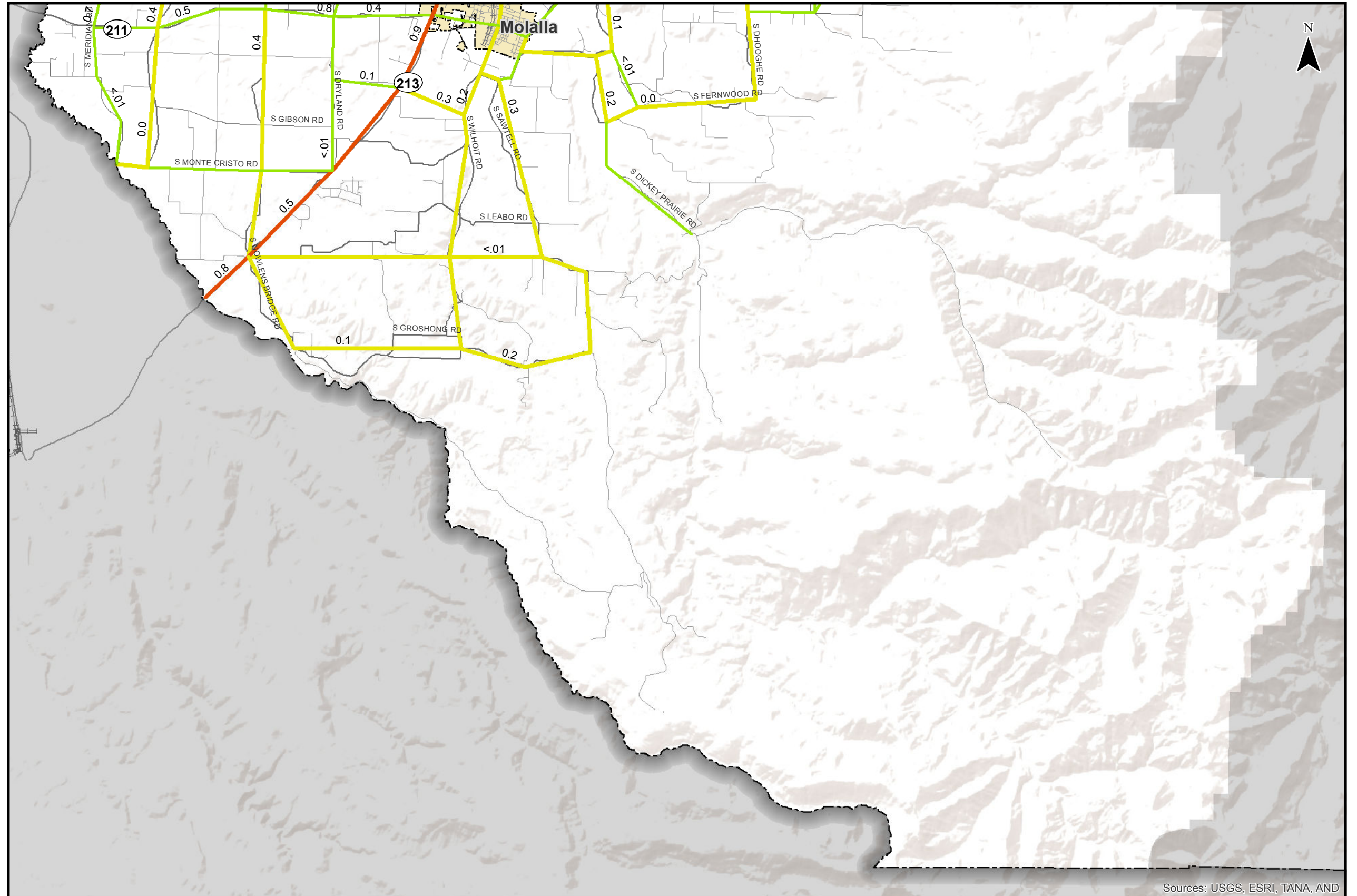
**Evening Weekday Peak Hour Link Volumes 2035 Tier 1 Scenario
Southwest County - Northern Portion**

Figure
SN T1

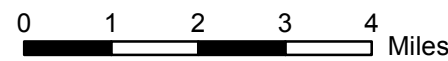


2035 Tier 1 Scenario Volumes

- Freeway
- Principal / Major Arterial
- Minor Arterial
- Other
- #.#** PM Weekday Traffic Volume in Thousands
- Incorporated Areas
- County Boundary
- UGB



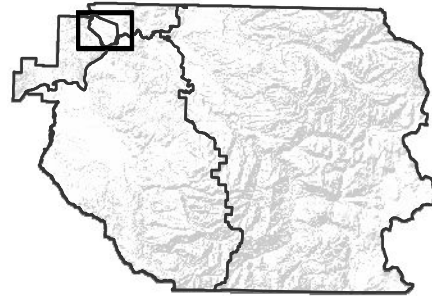
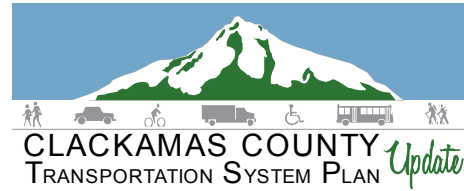
Sources: USGS, ESRI, TANA, AND



Coordinate System:
NAD 1983 HARN StatePlane Oregon North FIPS 3601 Feet Intl
Data Source:
Cambridge Systematics, Clackamas County,
Metro Data Resource Center

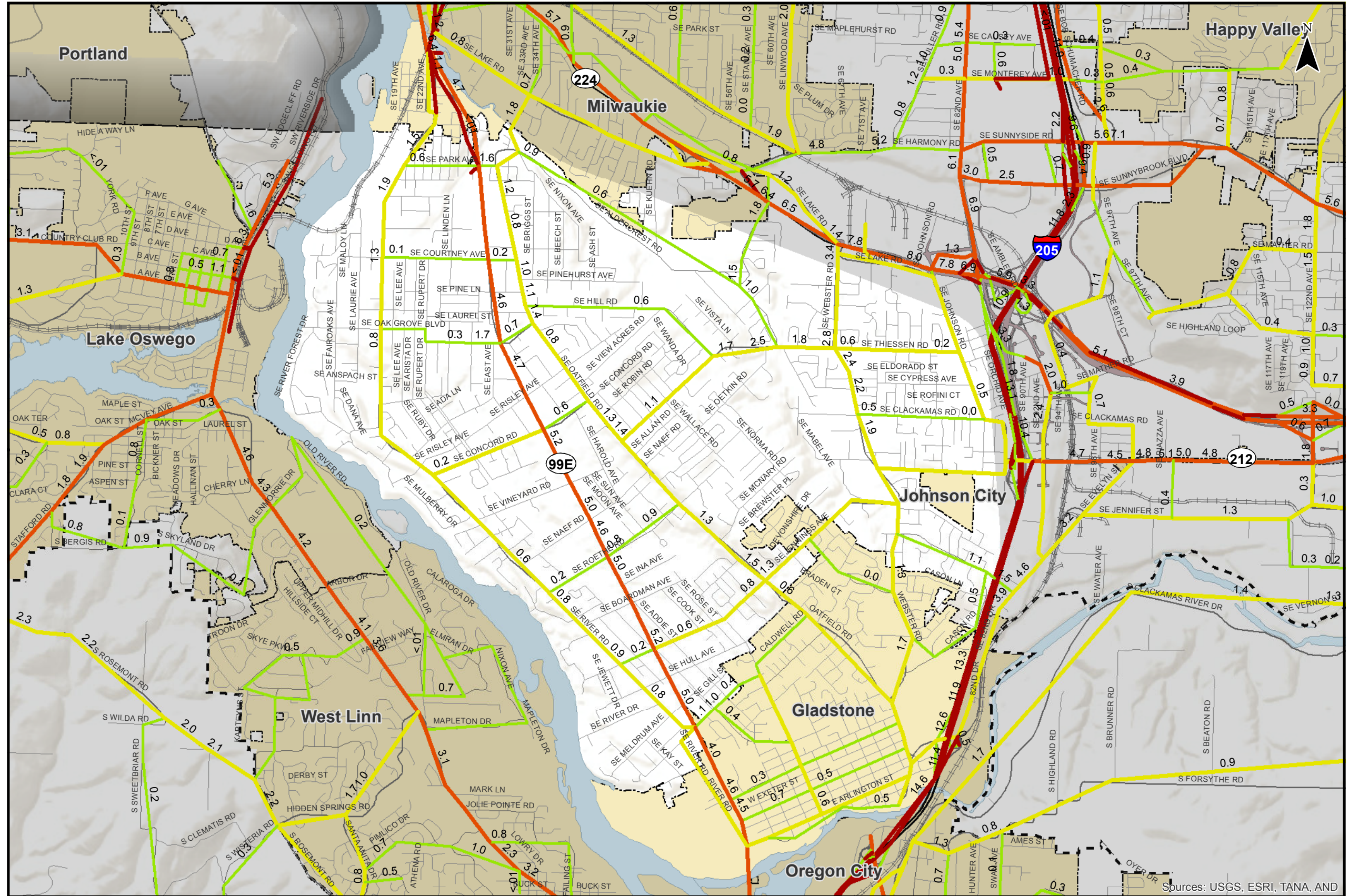
**Evening Weekday Peak Hour Link Volumes 2035 Tier 1 Scenario
Southwest County - Southern Portion**

Figure
SS T1



2035 Tier 1 Scenario Volumes

- Freeway
- Principal / Major Arterial
- Minor Arterial
- Other
- ##** PM Weekday Traffic Volume in Thousands
- Incorporated Areas
- County Boundary
- UGB



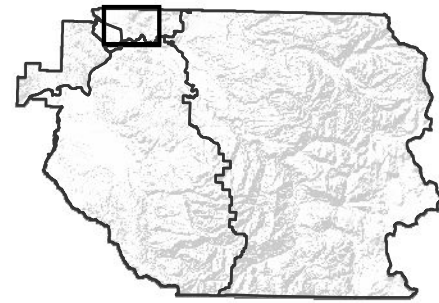
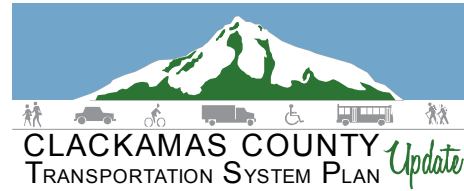
Sources: USGS, ESRI, TANA, AND

0 1 Miles

Coordinate System:
NAD 1983 HARN StatePlane Oregon North FIPS 3601 Feet Intl
Data Source:
Cambridge Systematics, Clackamas County,
Metro Data Resource Center

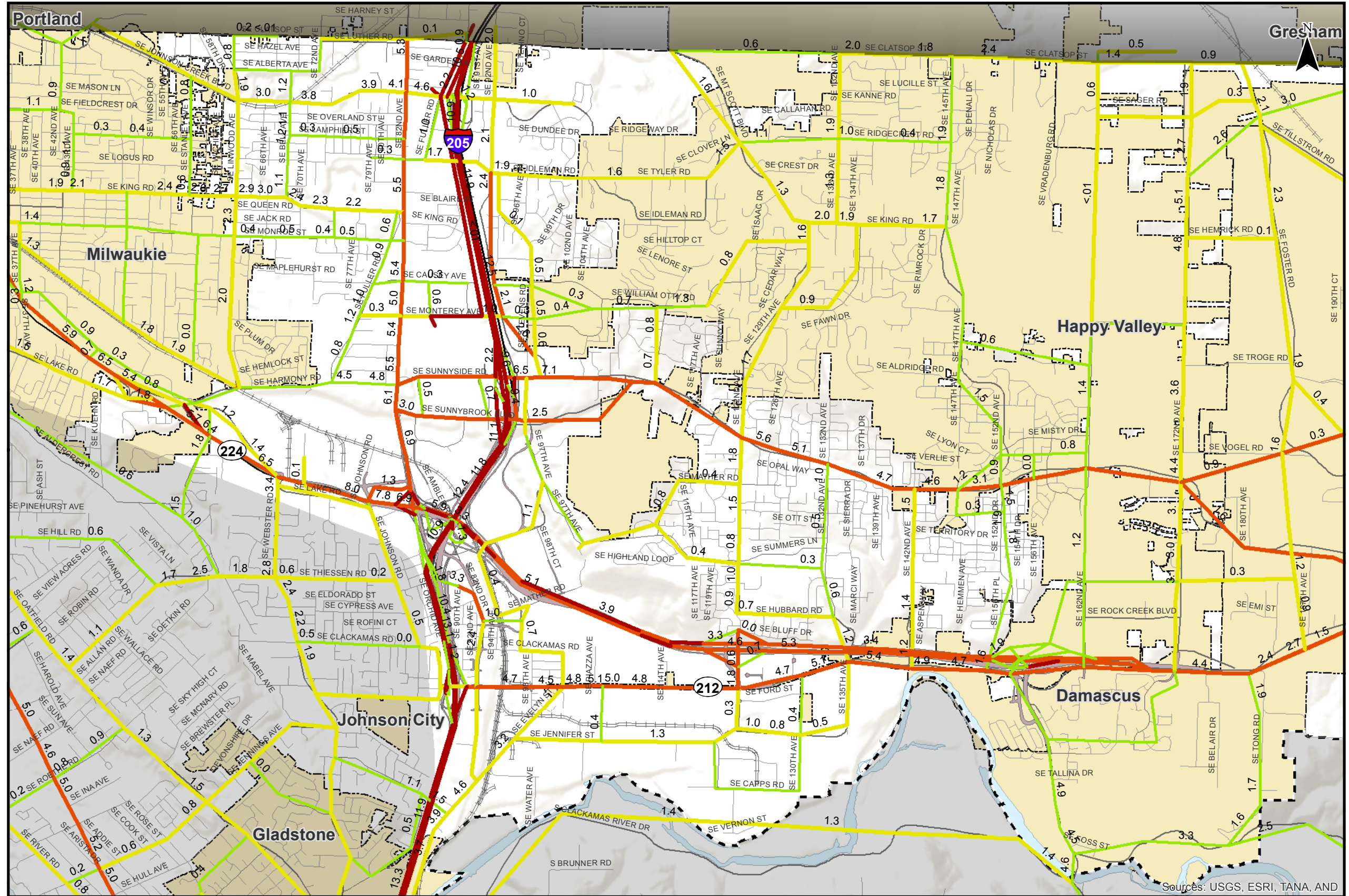
**Evening Weekday Peak Hour Link Volumes 2035 Tier 1 Scenario
Greater McLoughlin Area**

Figure
M T1



2035 Tier 1 Scenario Volumes

- Freeway
- Principal / Major Arterial
- Minor Arterial
- Other
- ## PM Weekday Traffic Volume in Thousands
- Incorporated Areas
- County Boundary
- UGB



Evening Weekday Peak Hour Link Volumes 2035 Tier 1 Scenario
Greater Clackamas Regional Center / Industrial Area

Figure
C T1

0 1 Miles

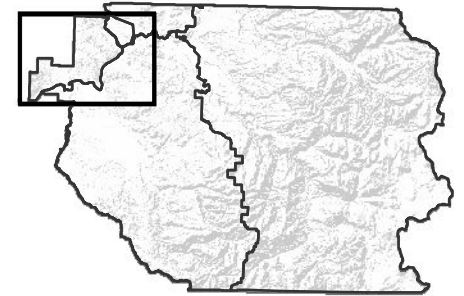
Coordinate System:
NAD 1983 HARN StatePlane Oregon North FIPS 3601 Feet Intl
Data Source:
Cambridge Systematics, Clackamas County,
Metro Data Resource Center

H:\profile\11732 - Clackamas County TSP\Task_12_PrioritizationMaster List\Evening Weekday Peak Hour Link Volumes 2035 Tier 1 Scenario.mxd

Sources: USGS, ESRI, TANA, AND

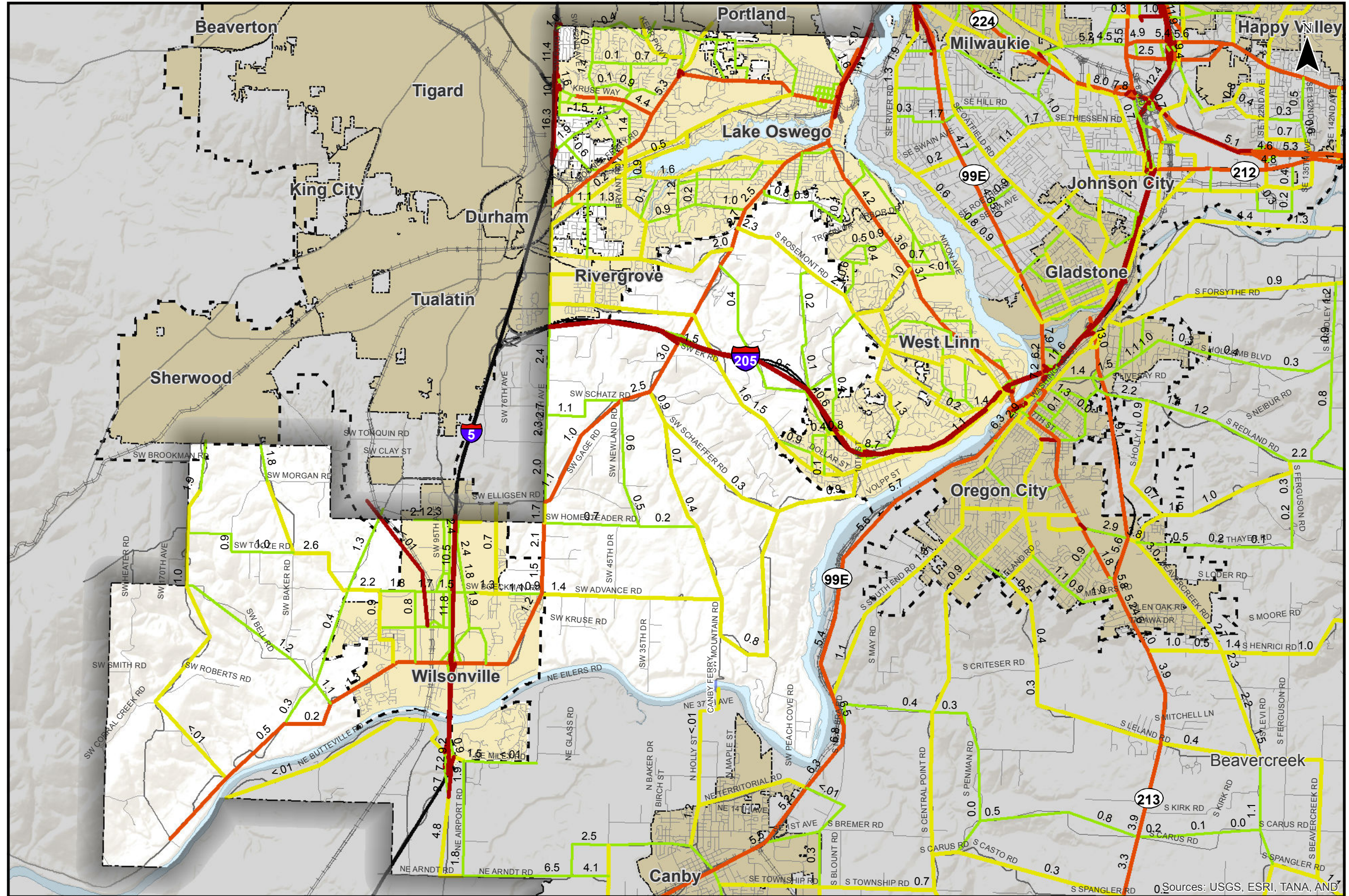


CLACKAMAS COUNTY
TRANSPORTATION SYSTEM PLAN *Update*



2035 Tier 1 Scenario Volumes

- Freeway
- Principal / Major Arterial
- Minor Arterial
- Other
- ##** PM Weekday Traffic Volume in Thousands
- Incorporated Areas
- County Boundary
- UGB



0 1 2 Miles

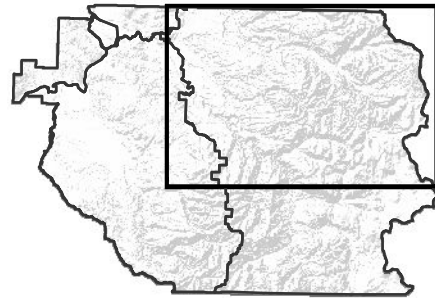
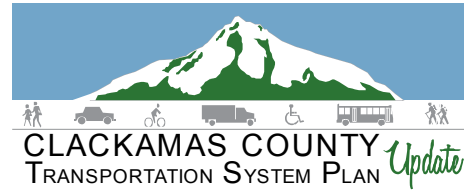
Coordinate System:
NAD 1983 HARN StatePlane Oregon North FIPS 3601 Feet Intl
Data Source:
Cambridge Systematics, Clackamas County,
Metro Data Resource Center

**Evening Weekday Peak Hour Link Volumes 2035 Tier 1 Scenario
Northwest County**

Figure
NW T1

H:\profile\11732 - Clackamas County TSP\Task_12_PrioritizationMaster List\Evening Weekday Peak Hour Link Volumes 2035 Tier 1 Scenario.mxd

Sources: USGS, ESRI, TANA, AND



Very Congested >1.10

- 1,000 Vehicles
- 5,000 Vehicles
- 10,000 Vehicles

Congested 1.0 - 1.1

- 1,000 Vehicles
- 5,000 Vehicles
- 10,000 Vehicles

Some congestion 0.9 - 1.0

- 1,000 Vehicles
- 5,000 Vehicles
- 10,000 Vehicles

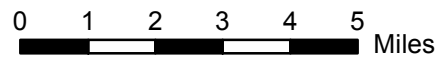
Nearing Congested 0.8 - 0.9

- 1,000 Vehicles
- 5,000 Vehicles
- 10,000 Vehicles

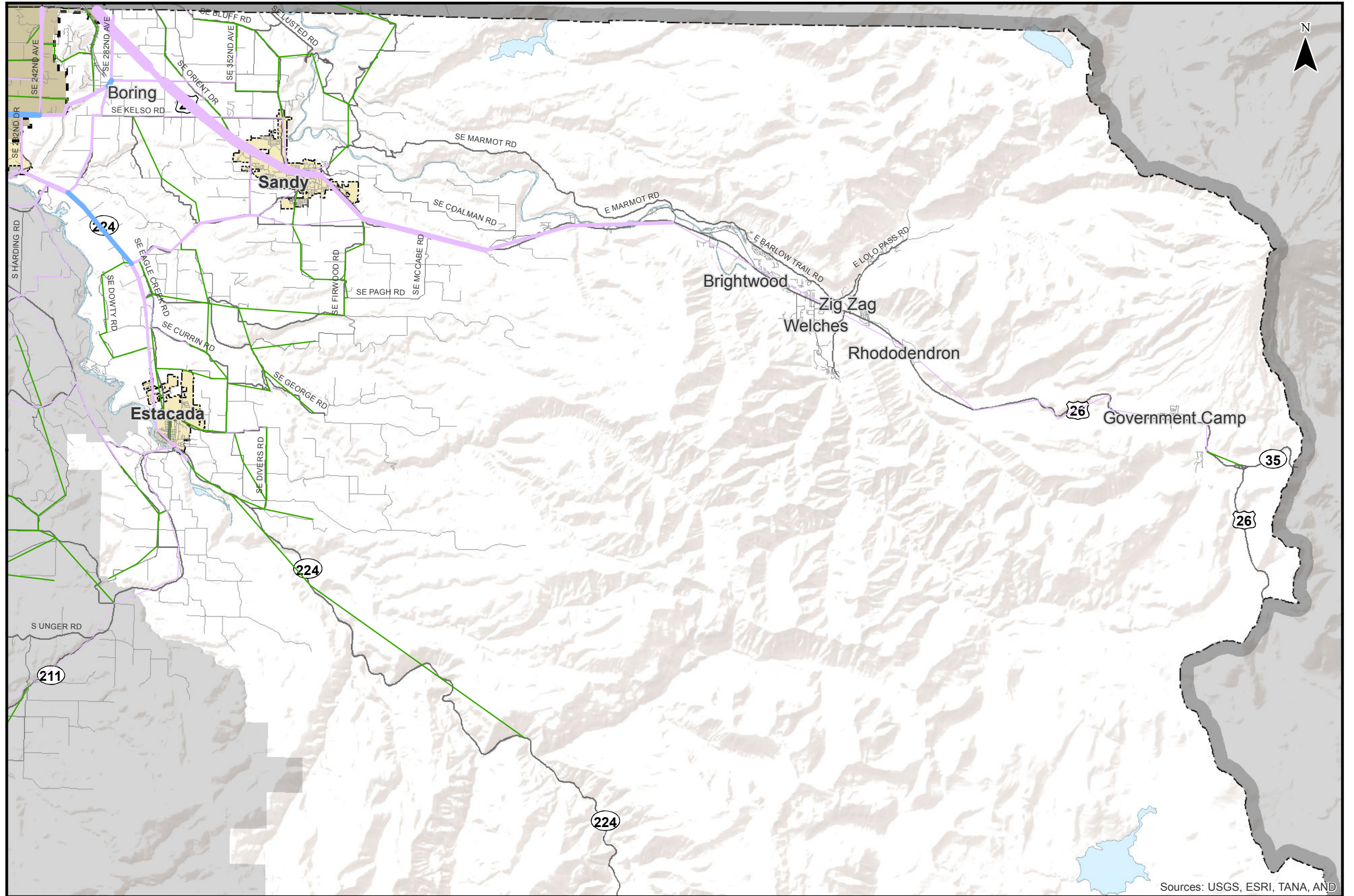
Less Congested <0.8

- 100 Vehicles
- 1,000 Vehicles
- 10,000 Vehicles

- Incorporated Areas
- County Boundary
- UGB



Coordinate System:
NAD 1983 HARN StatePlane Oregon North FIPS 3601 Feet Intl
Data Source: Cambridge Systematics, Clackamas County,
Metro Data Resource Center



Sources: USGS, ESRI, TANA, AND

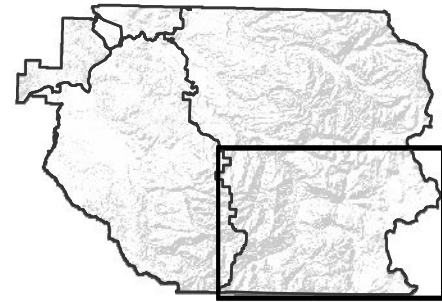
**Evening Weekday Peak Hour Roadway Segment Congestion 2035 Tier 1 Scenario
East County - Northern Portion**

Figure
EN T1-B

H:\profile 11732 - Clackamas County TSP\Task_12_PrioritizationMaster List\Evening Weekday Peak Hour Roadway Segment Congestion 2035 Tier 1 Scenario.mxd



CLACKAMAS COUNTY
TRANSPORTATION SYSTEM PLAN *Update*



Very Congested >1.10

- 1,000 Vehicles
- 5,000 Vehicles
- 10,000 Vehicles

Congested 1.0 - 1.1

- 1,000 Vehicles
- 5,000 Vehicles
- 10,000 Vehicles

Some congestion 0.9 - 1.0

- 1,000 Vehicles
- 5,000 Vehicles
- 10,000 Vehicles

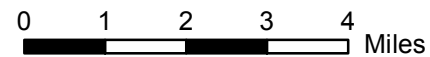
Nearing Congested 0.8 - 0.9

- 1,000 Vehicles
- 5,000 Vehicles
- 10,000 Vehicles

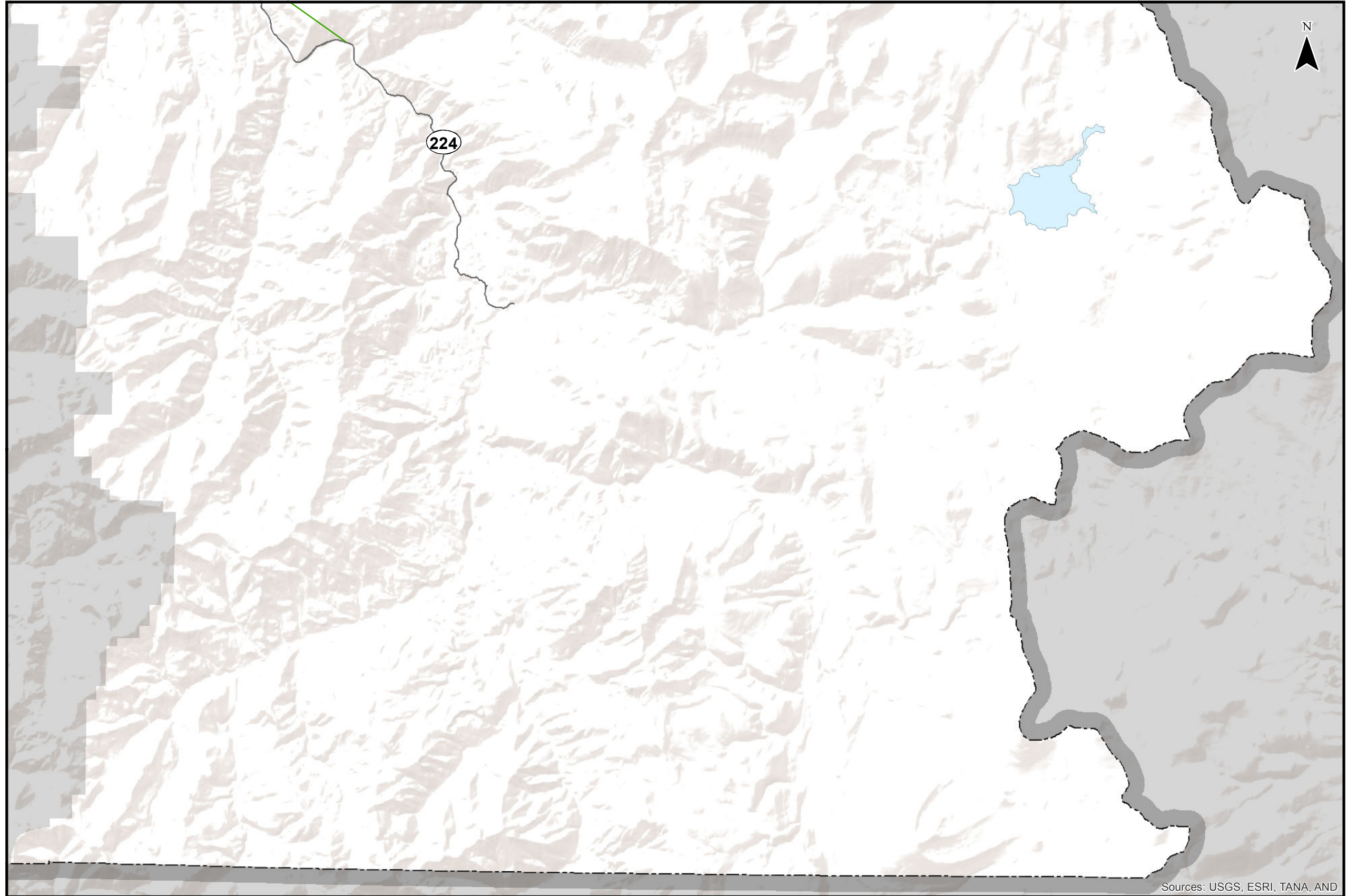
Less Congested <0.8

- 100 Vehicles
- 1,000 Vehicles
- 10,000 Vehicles

- Incorporated Areas
- County Boundary
- UGB



Coordinate System:
NAD 1983 HARN StatePlane Oregon North FIPS 3601 Feet Intl
Data Source: Cambridge Systematics, Clackamas County,
Metro Data Resource Center

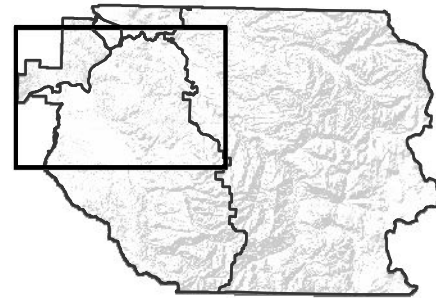
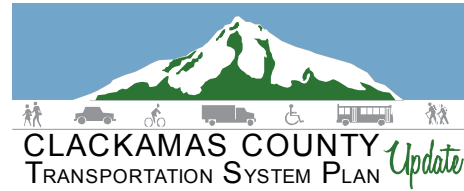


Sources: USGS, ESRI, TANA, AND

**Evening Weekday Peak Hour Roadway Segment Congestion 2035 Tier 1 Scenario
East County - Southern Portion**

Figure
ES T1-B

H:\profile 11732 - Clackamas County TSP\Task_12_Prioritization\Master List\Evening Weekday Peak Hour Roadway Segment Congestion 2035 Tier 1 Scenario.mxd



Very Congested >1.10

- 1,000 Vehicles
- 5,000 Vehicles
- 10,000 Vehicles

Congested 1.0 - 1.1

- 1,000 Vehicles
- 5,000 Vehicles
- 10,000 Vehicles

Some congestion 0.9 - 1.0

- 1,000 Vehicles
- 5,000 Vehicles
- 10,000 Vehicles

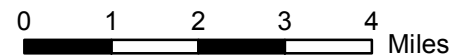
Nearing Congested 0.8 - 0.9

- 1,000 Vehicles
- 5,000 Vehicles
- 10,000 Vehicles

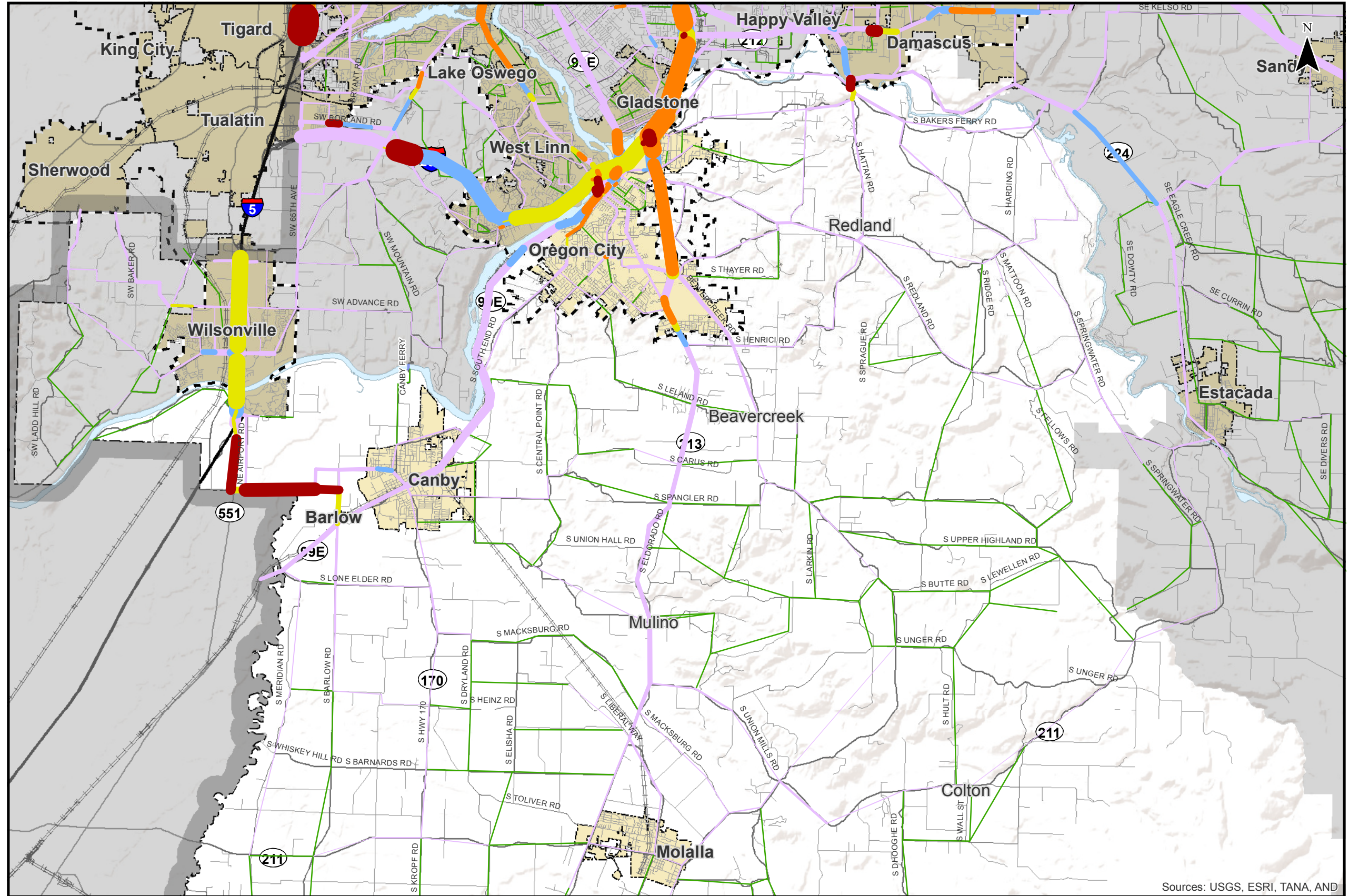
Less Congested <0.8

- 100 Vehicles
- 1,000 Vehicles
- 10,000 Vehicles

- Incorporated Areas
- County Boundary
- UGB



Coordinate System:
NAD 1983 HARN StatePlane Oregon North FIPS 3601 Feet Intl
Data Source: Cambridge Systematics, Clackamas County,
Metro Data Resource Center

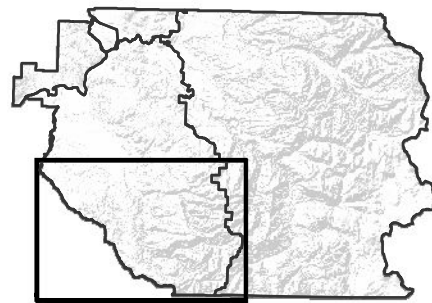
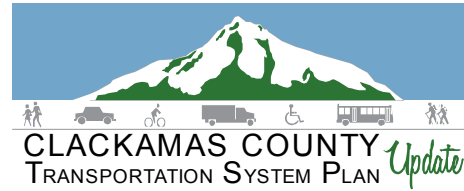


Sources: USGS, ESRI, TANA, AND

**Evening Weekday Peak Hour Roadway Segment Congestion 2035 Tier 1 Scenario
Southwest County - Northern Portion**

Figure
SN T1-B

H:\profile 11732 - Clackamas County TSP\Task_12_PrioritizationMaster List\Evening Weekday Peak Hour Roadway Segment Congestion 2035 Tier 1 Scenario.mxd



Very Congested >1.10

- 1,000 Vehicles
- 5,000 Vehicles
- 10,000 Vehicles

Congested 1.0 - 1.1

- 1,000 Vehicles
- 5,000 Vehicles
- 10,000 Vehicles

Some congestion 0.9 - 1.0

- 1,000 Vehicles
- 5,000 Vehicles
- 10,000 Vehicles

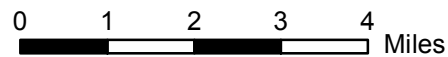
Nearing Congested 0.8 - 0.9

- 1,000 Vehicles
- 5,000 Vehicles
- 10,000 Vehicles

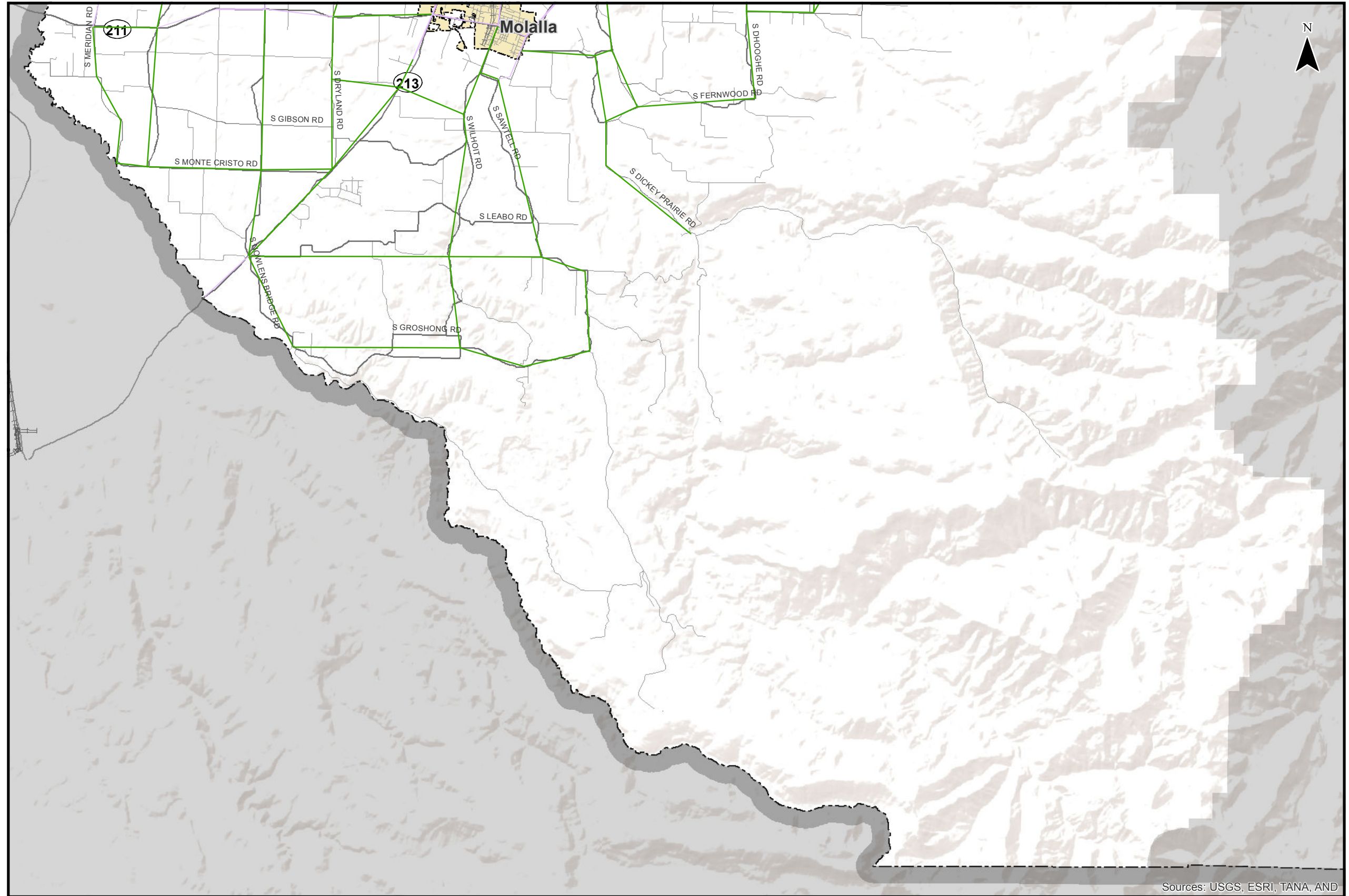
Less Congested <0.8

- 100 Vehicles
- 1,000 Vehicles
- 10,000 Vehicles

- Incorporated Areas
- County Boundary
- UGB



Coordinate System:
NAD 1983 HARN StatePlane Oregon North FIPS 3601 Feet Intl
Data Source: Cambridge Systematics, Clackamas County,
Metro Data Resouce Center



Sources: USGS, ESRI, TANA, AND

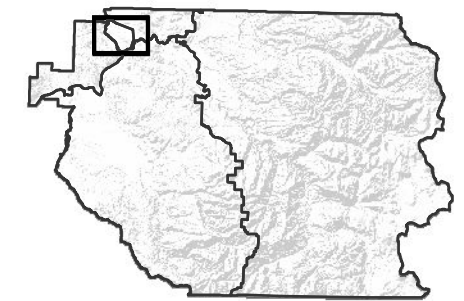
**Evening Weekday Peak Hour Roadway Segment Congestion 2035 Tier 1 Scenario
Southwest County - Southern Portion**

Figure
SS T1-B

H:\profile 11732 - Clackamas County TSP\Task_12_Prioritization\Master List\Evening Weekday Peak Hour Roadway Segment Congestion 2035 Tier 1 Scenario.mxd



CLACKAMAS COUNTY
TRANSPORTATION SYSTEM PLAN *Update*



Very Congested >1.10

- 1,000 Vehicles
- 5,000 Vehicles
- 10,000 Vehicles

Congested 1.0 - 1.1

- 1,000 Vehicles
- 5,000 Vehicles
- 10,000 Vehicles

Some congestion 0.9 - 1.0

- 1,000 Vehicles
- 5,000 Vehicles
- 10,000 Vehicles

Nearing Congested 0.8 - 0.9

- 1,000 Vehicles
- 5,000 Vehicles
- 10,000 Vehicles

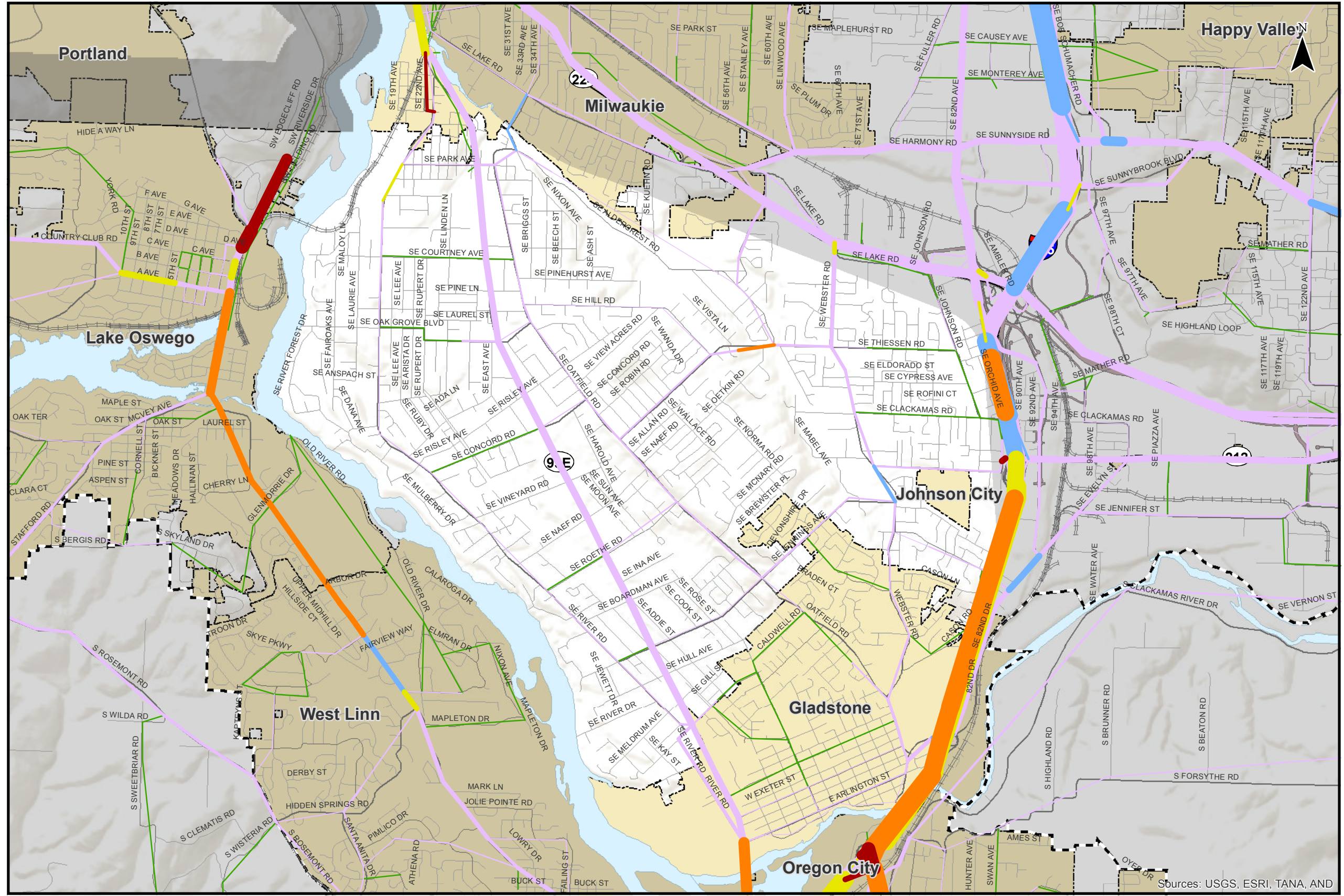
Less Congested <0.8

- 100 Vehicles
- 1,000 Vehicles
- 10,000 Vehicles

- Incorporated Areas
- County Boundary
- UGB



Coordinate System:
NAD 1983 HARN StatePlane Oregon North FIPS 3601 Feet Intl
Data Source: Cambridge Systematics, Clackamas County,
Metro Data Resource Center

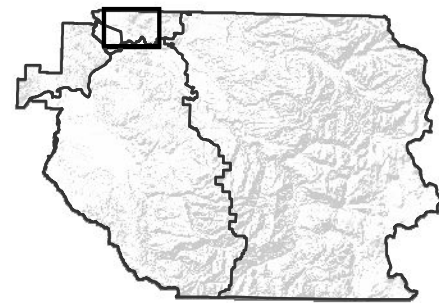
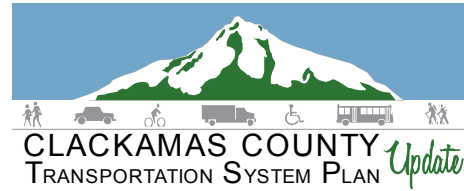


Sources: USGS, ESRI, TANA, AND

**Evening Weekday Peak Hour Roadway Segment Congestion 2035 Tier 1 Scenario
Greater McLoughlin Area**

Figure
M T1-B

H:\profile11732 - Clackamas County TSP\Task_12_PrioritizationMaster List\Evening Weekday Peak Hour Roadway Segment Congestion 2035 Tier 1 Scenario.mxd



Very Congested >1.10

- 1,000 Vehicles
- 5,000 Vehicles
- 10,000 Vehicles

Congested 1.0 - 1.1

- 1,000 Vehicles
- 5,000 Vehicles
- 10,000 Vehicles

Some congestion 0.9 - 1.0

- 1,000 Vehicles
- 5,000 Vehicles
- 10,000 Vehicles

Nearing Congested 0.8 - 0.9

- 1,000 Vehicles
- 5,000 Vehicles
- 10,000 Vehicles

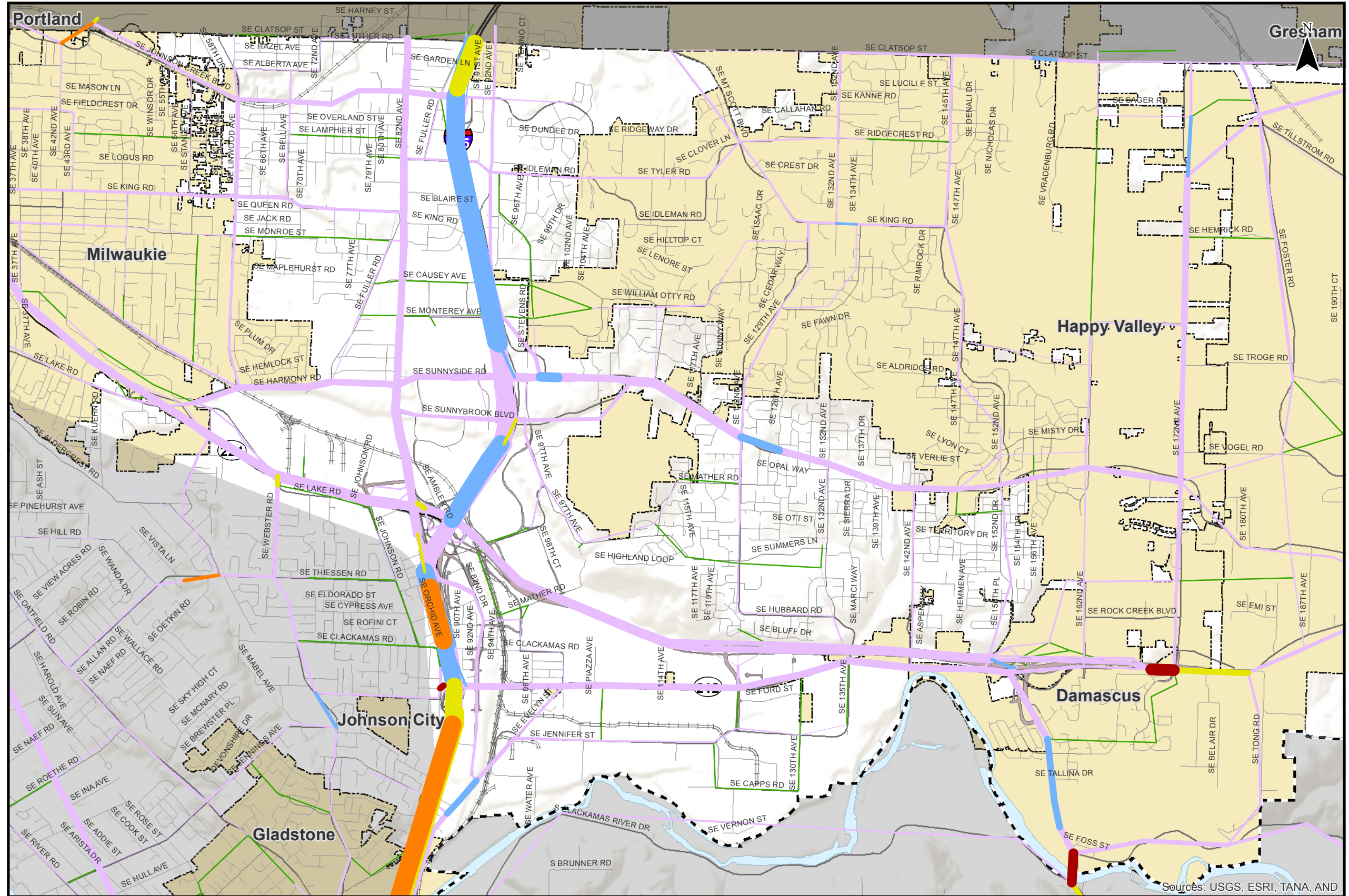
Less Congested <0.8

- 100 Vehicles
- 1,000 Vehicles
- 10,000 Vehicles

- Incorporated Areas
- County Boundary
- UGB



Coordinate System:
 NAD 1983 HARN StatePlane Oregon North FIPS 3601 Feet Intl
 Data Source: Cambridge Systematics, Clackamas County,
 Metro Data Resource Center



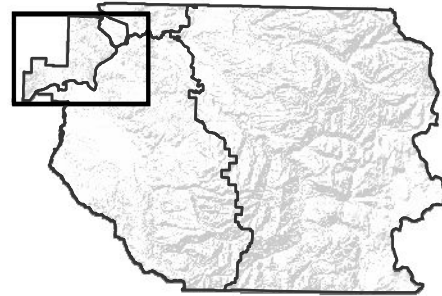
**Evening Weekday Peak Hour Roadway Segment Congestion 2035 Tier 1 Scenario
 Greater Clackamas Regional Center / Industrial Area**

Figure
C T1-B

H:\profile11732 - Clackamas County TSP\Task_12_PrioritizationMaster List\Evening Weekday Peak Hour Roadway Segment Congestion 2035 Tier 1 Scenario.mxd



CLACKAMAS COUNTY
TRANSPORTATION SYSTEM PLAN *Update*



Very Congested >1.10

- 1,000 Vehicles
- 5,000 Vehicles
- 10,000 Vehicles

Congested 1.0 - 1.1

- 1,000 Vehicles
- 5,000 Vehicles
- 10,000 Vehicles

Some congestion 0.9 - 1.0

- 1,000 Vehicles
- 5,000 Vehicles
- 10,000 Vehicles

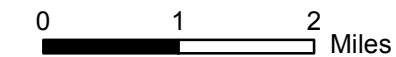
Nearing Congested 0.8 - 0.9

- 1,000 Vehicles
- 5,000 Vehicles
- 10,000 Vehicles

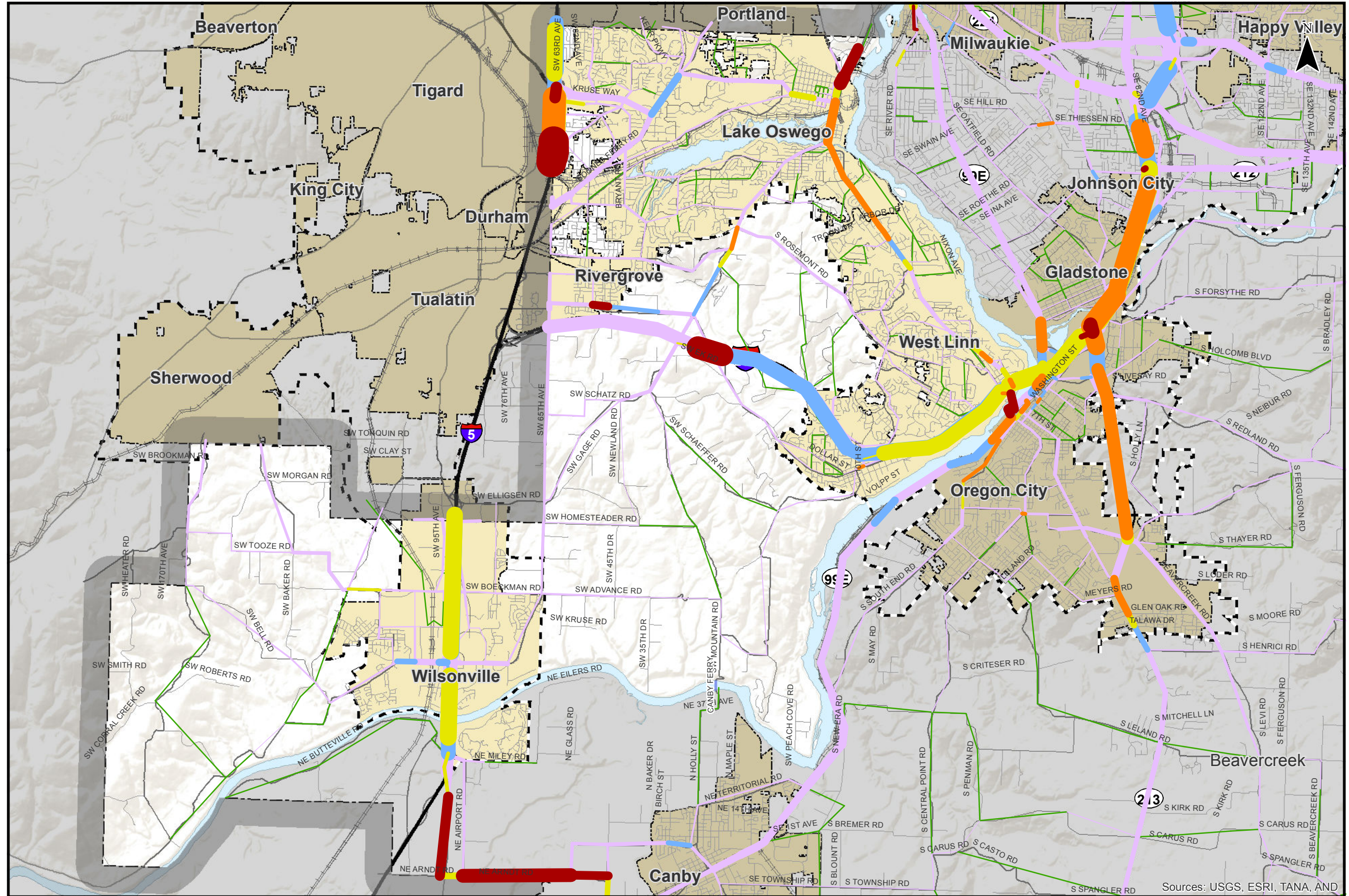
Less Congested <0.8

- 100 Vehicles
- 1,000 Vehicles
- 10,000 Vehicles

- Incorporated Areas
- County Boundary
- UGB



Coordinate System:
NAD 1983 HARN StatePlane Oregon North FIPS 3601 Feet Intl
Data Source: Cambridge Systematics, Clackamas County,
Metro Data Resource Center



Sources: USGS, ESRI, TANA, AND

**Evening Weekday Peak Hour Roadway Segment Congestion 2035 Tier 1 Scenario
Northwest County**

Figure
NW T1-B

H:\profile\11732 - Clackamas County TSP\Task_12_PrioritizationMaster List\Evening Weekday Peak Hour Roadway Segment Congestion 2035 Tier 1 Scenario.mxd