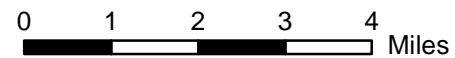


- Safety Projects**
- ||||| Safety Projects
 - ✗ "Consider Removing"
 - Roadway
 - Intersection
 - ||||| Candidate Road Safety Audit Corridors
 - ▲ County SPIS Sites
 - ▲ Safety Focus Intersections

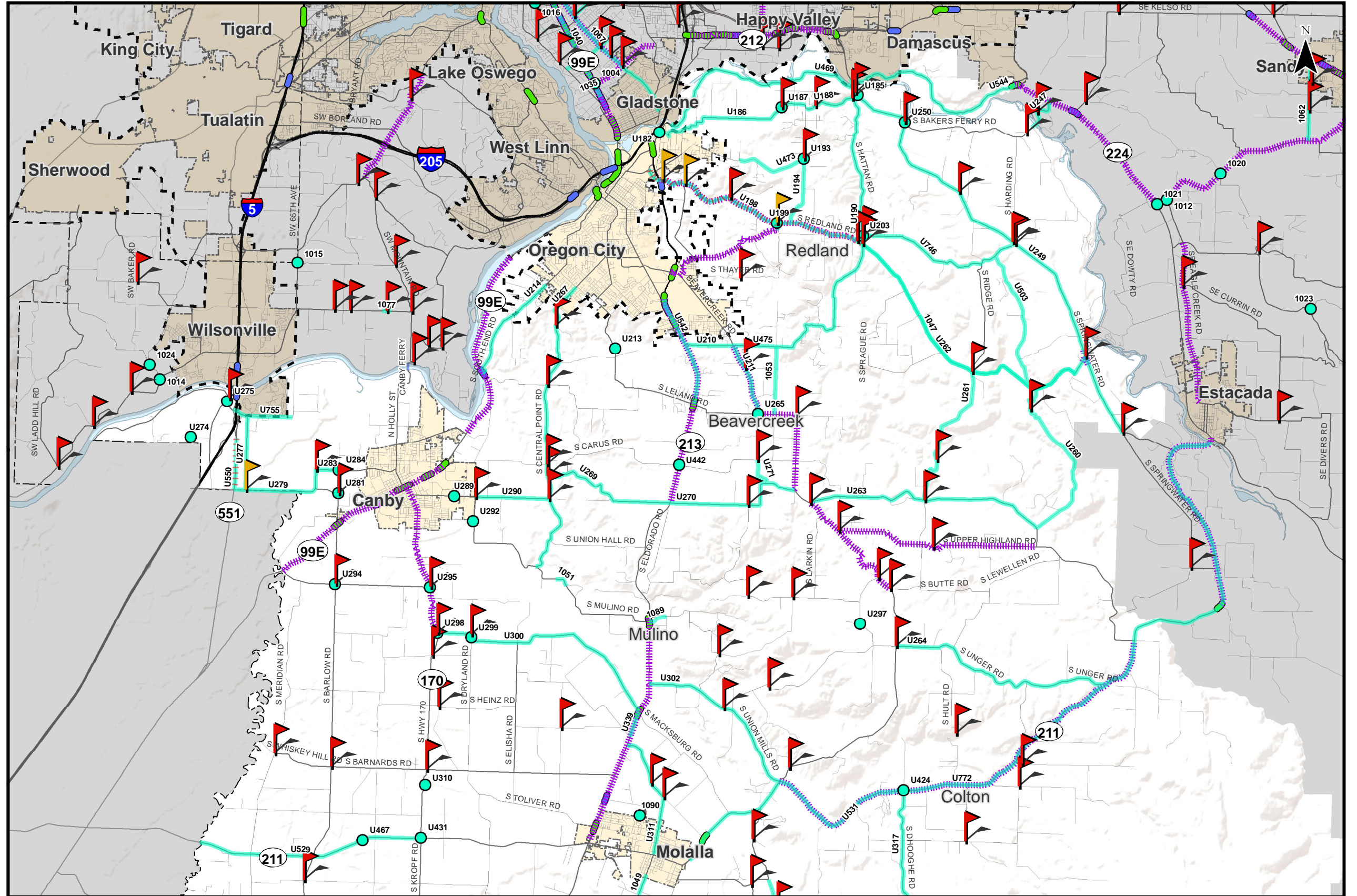
- ODOT SPIS Sites**
- 5% Site
 - 10% Site
 - Incorporated Areas
 - County Boundary
 - UGB

Note:
 Projects labeled U000-U999 are "Previously Planned Projects."
 Projects labeled 1000-1999 are "Public Suggested Projects."
 Projects labeled 2000-2999 are "New Identified Projects."

Projects, Studies, and Programs are included in the "New Identified Projects" Tables for the Candidate Road Safety Audit Corridors, County SPIS Sites, Safety Focus Intersection, and ODOT SPIS Sites

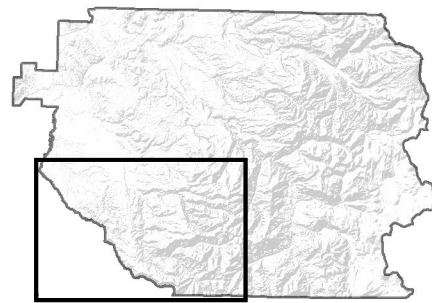
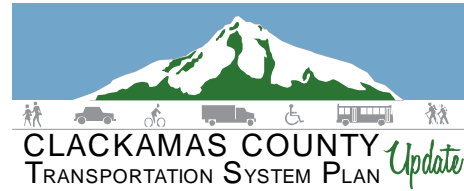


Coordinate System:
 NAD 1983 HARN StatePlane Oregon North FIPS 3601 Feet Intl
 Data Source:
 Clackamas County, Metro Data Resouce Center



**Safety Projects
 Southwest County - Northern Portion**

Figure
SN S



Safety Projects

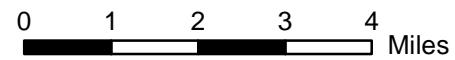
- ||||| Safety Projects
- ✗ "Consider Removing"
- Roadway
- Intersection
- ||||| Candidate Road Safety Audit Corridors
- ▴ County SPIS Sites
- ▴ Safety Focus Intersections

ODOT SPIS Sites

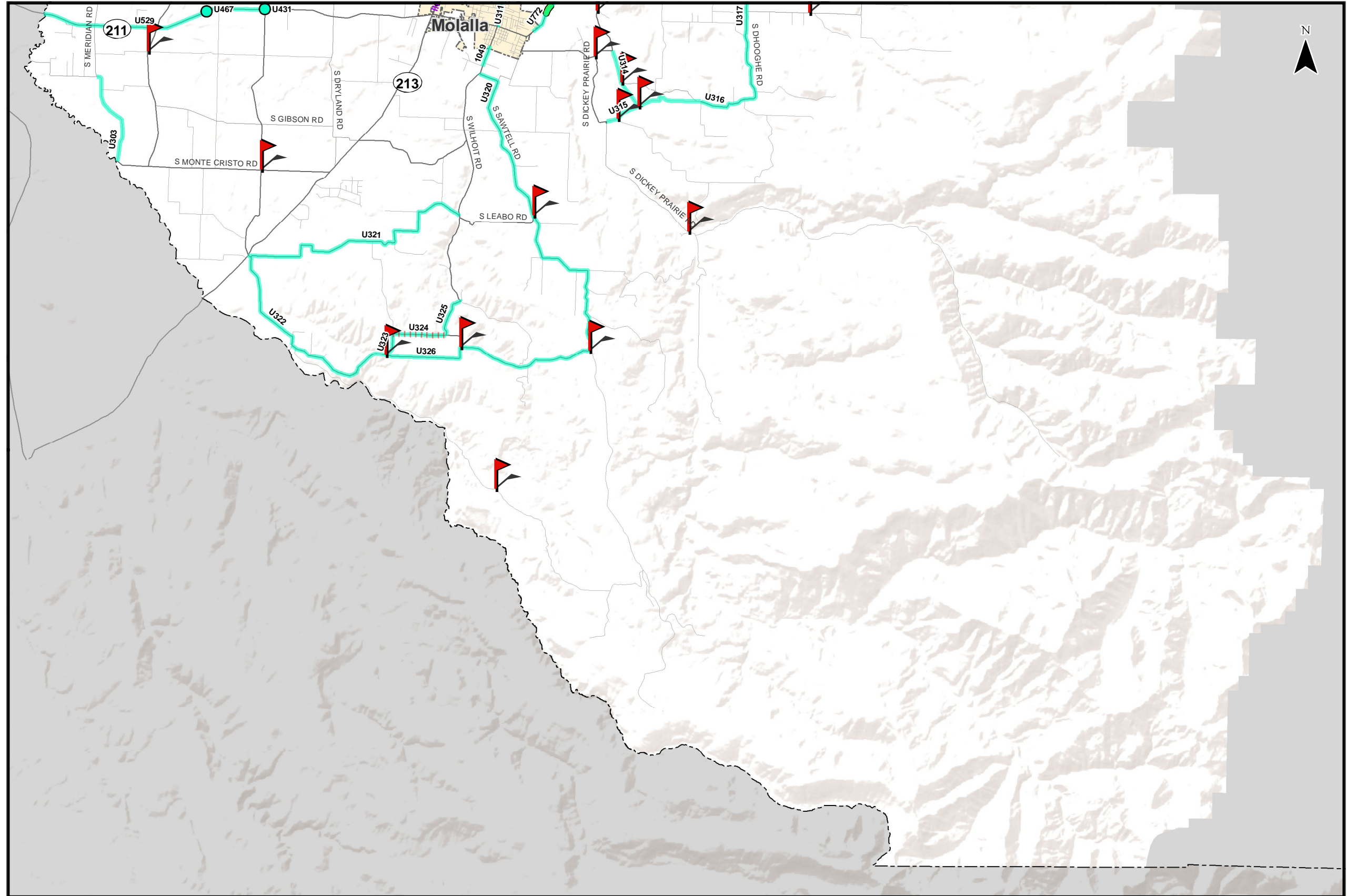
- 5% Site
- 10% Site
- ▭ Incorporated Areas
- ▭ County Boundary
- ▭ UGB

Note:
 Projects labeled U000-U999 are
 "Previously Planned Projects."
 Projects labeled 1000-1999 are
 "Public Suggested Projects."
 Projects labeled 2000-2999 are
 "New Identified Projects."

Projects, Studies, and Programs are included
 in the "New Identified Projects" Tables for the
 Candidate Road Safety Audit Corridors,
 County SPIS Sites, Safety Focus Intersection,
 and ODOT SPIS Sites



Coordinate System:
 NAD 1983 HARN StatePlane Oregon North FIPS 3601 Feet Int
 Data Source:
 Clackamas County, Metro Data Resouce Center



Safety Projects Southwest County - Southern Portion

Figure
SS S