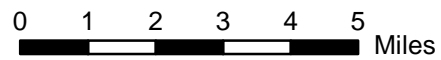


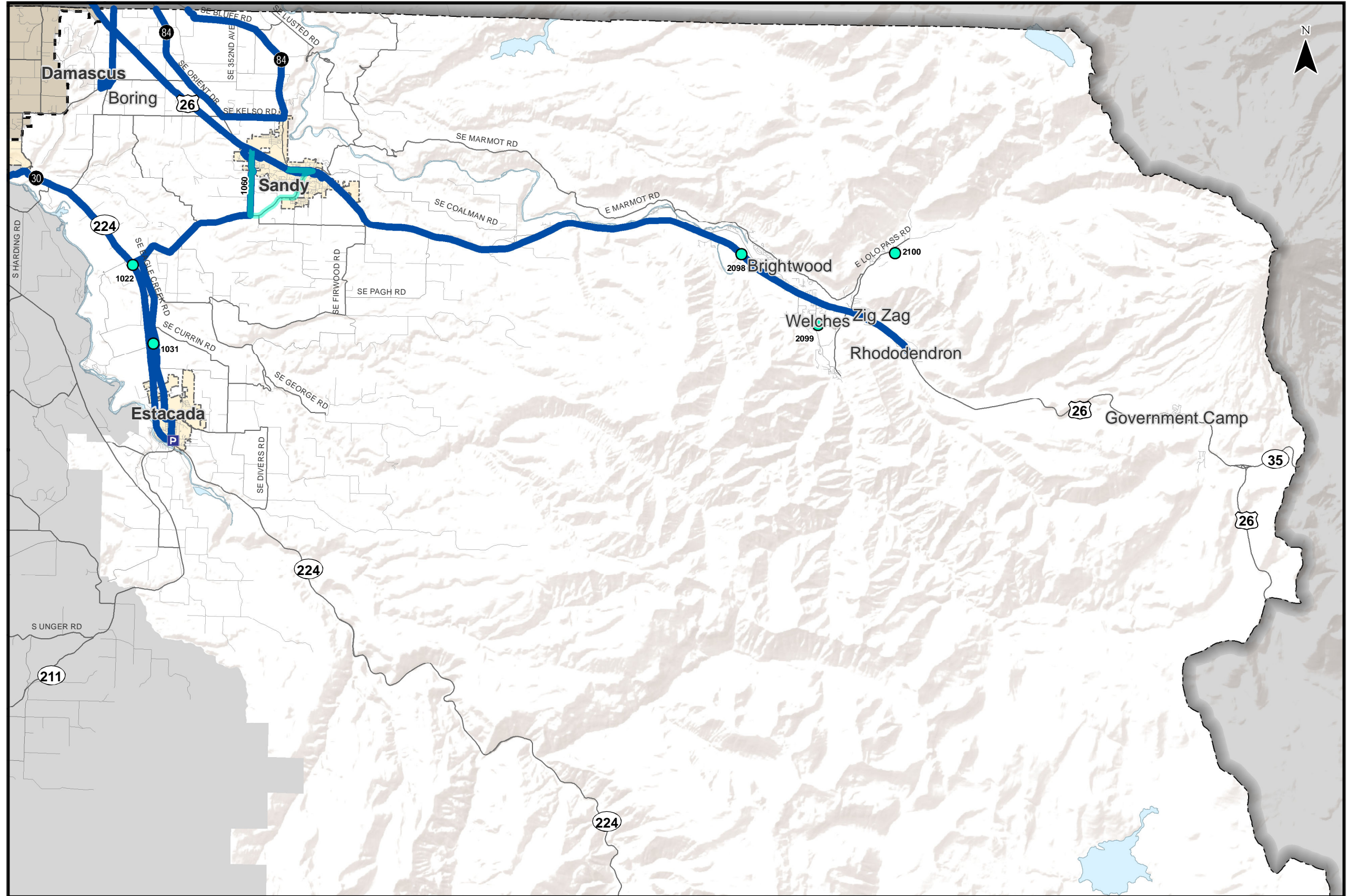
Transit Projects

- ||||| "Consider Removing"
- ✗ "Consider Removing"
- Transit Project
- Transit Project
- Existing Transit Service
- Incorporated Areas
- ▭ County Boundary
- ▭ UGB

Note:
 Projects labeled U000-U999 are
 "Previously Planned Projects."
 Projects labeled 1000-1999 are
 "Public Suggested Projects."
 Projects labeled 2000-2999 are
 "New Identified Projects."

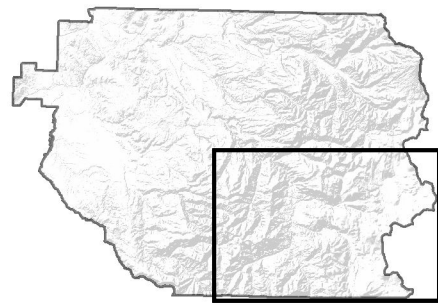
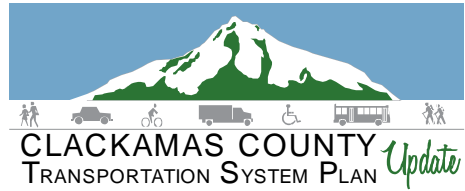


Coordinate System:
 NAD 1983 HARN StatePlane Oregon North FIPS 3601 Feet Int
 Data Source:
 Clackamas County, Metro Data Resouce Center



Transit Projects East County - Northern Portion

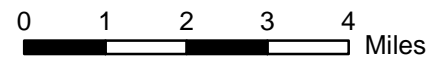
Figure
EN T



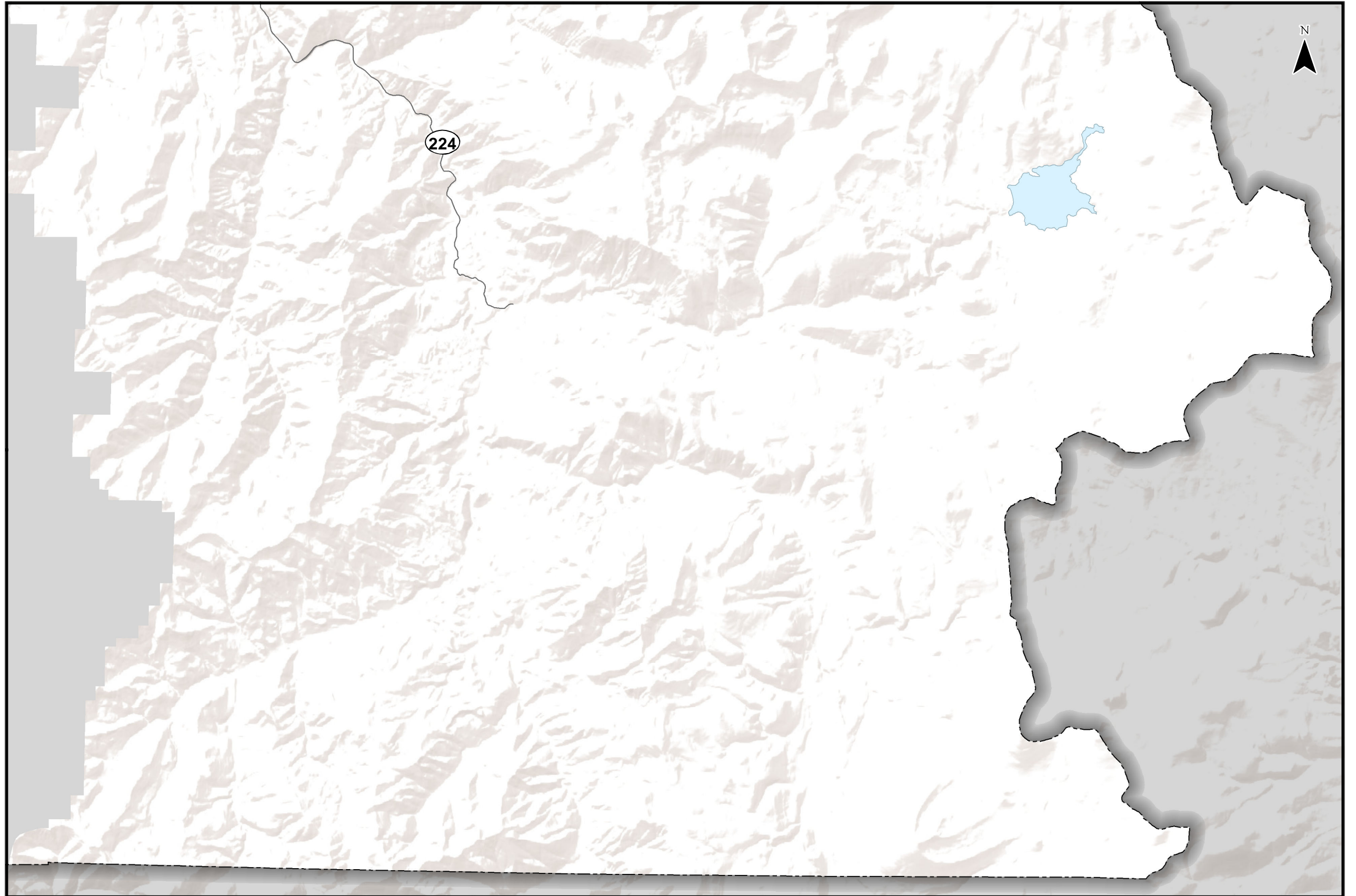
Transit Projects

- ||||| "Consider Removing"
- ✗ "Consider Removing"
- Transit Project
- Transit Project
- Existing Transit Service
- Incorporated Areas
- ▭ County Boundary
- ▭ UGB

Note:
 Projects labeled U000-U999 are
 "Previously Planned Projects."
 Projects labeled 1000-1999 are
 "Public Suggested Projects."
 Projects labeled 2000-2999 are
 "New Identified Projects."



Coordinate System:
 NAD 1983 HARN StatePlane Oregon North FIPS 3601 Feet Int
 Data Source:
 Clackamas County, Metro Data Resouce Center



Transit Projects East County - Southern Portion

Figure
ES T