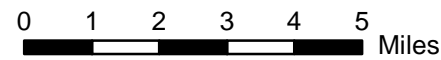


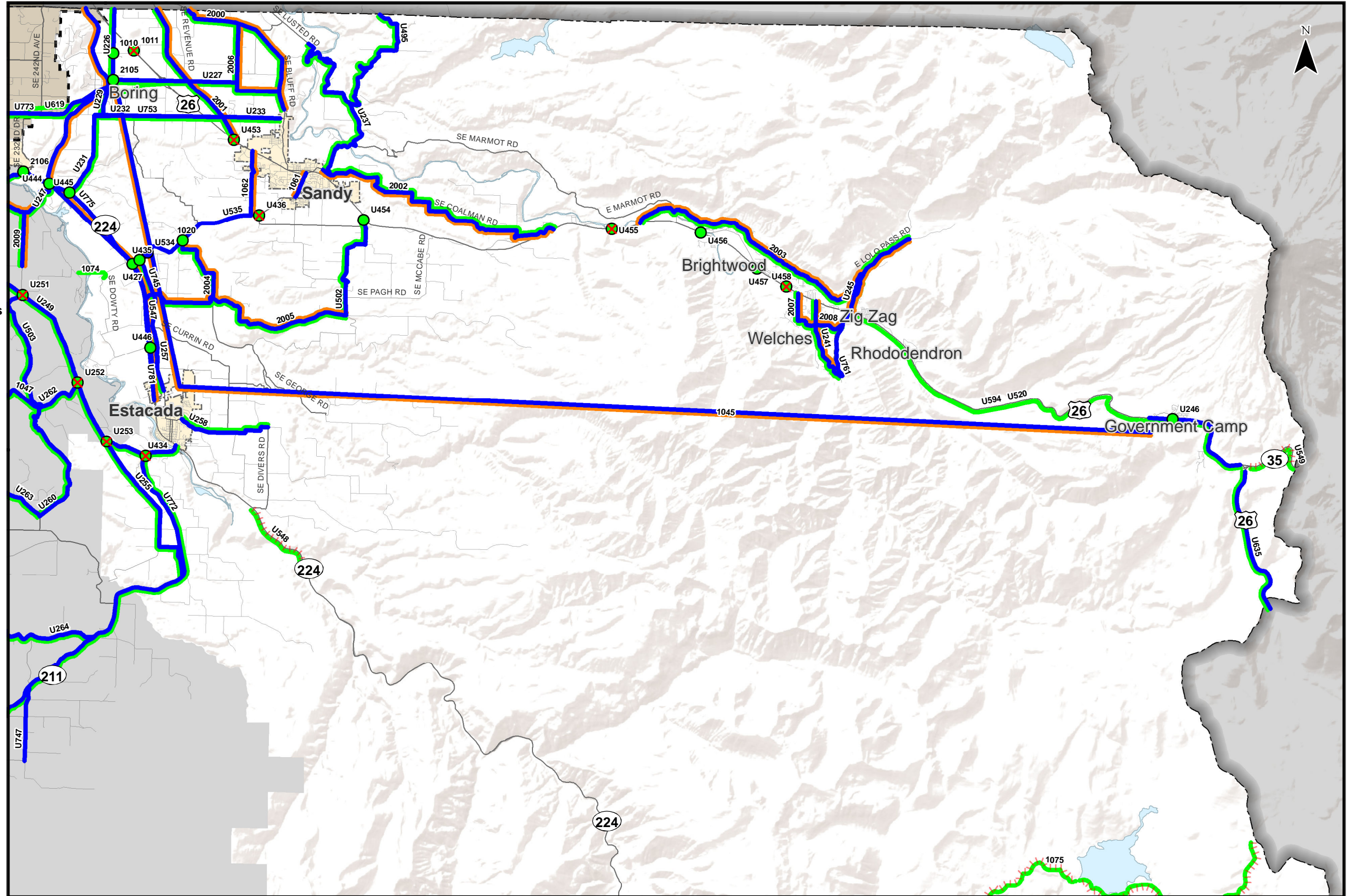
Roadway, Bicycle, and Pedestrian Projects

- - - - - "Consider Removing"
- X "Consider Removing"
- Roadway
- Pedestrian
- Bicycle
- Incorporated Areas
- County Boundary
- UGB

Note:
 Projects labeled U000-U999 are
 "Previously Planned Projects."
 Projects labeled 1000-1999 are
 "Public Suggested Projects."
 Projects labeled 2000-2999 are
 "New Identified Projects."

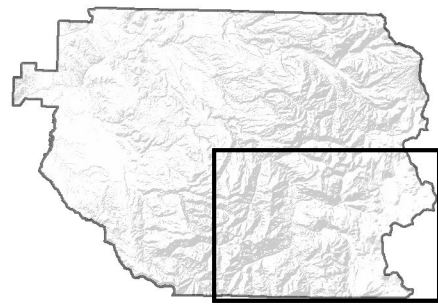
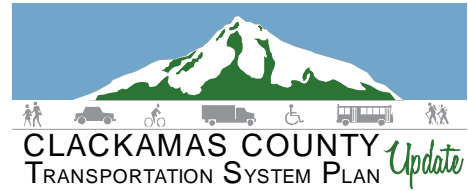


Coordinate System:
 NAD 1983 HARN StatePlane Oregon North FIPS 3601 Feet Int
 Data Source:
 Clackamas County, Metro Data Resouce Center



**Roadway, Pedestrian, and Bicycle Projects
 East County - Northern Portion**

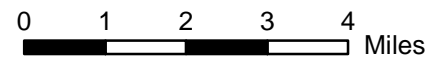
Figure
EN P



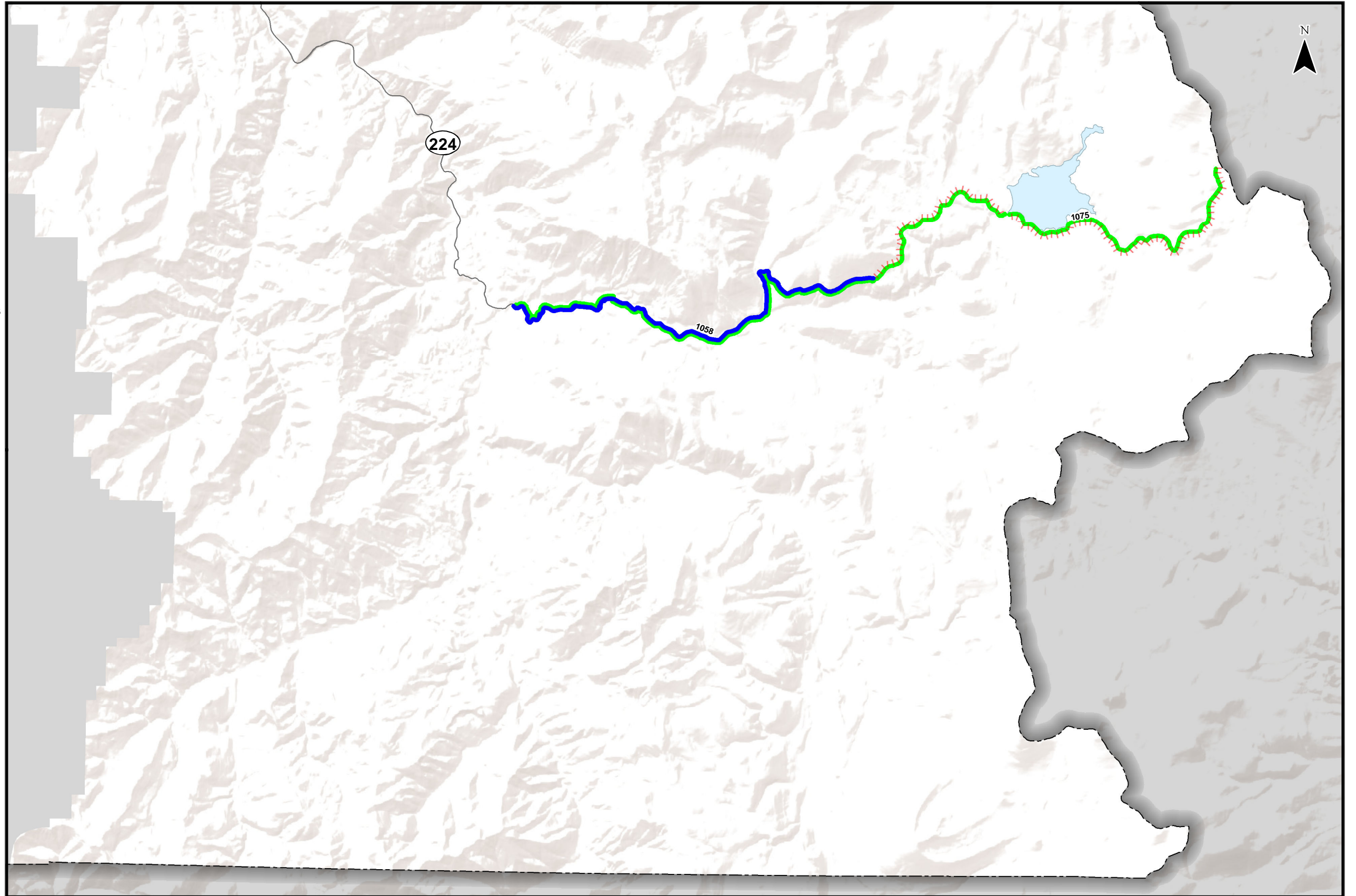
Roadway, Bicycle, and Pedestrian Projects

- ||||| "Consider Removing"
- ✗ "Consider Removing"
- Roadway
- Pedestrian
- Bicycle
- ▭ Incorporated Areas
- ▭ County Boundary
- ▭ UGB

Note:
 Projects labeled U000-U999 are
 "Previously Planned Projects."
 Projects labeled 1000-1999 are
 "Public Suggested Projects."
 Projects labeled 2000-2999 are
 "New Identified Projects."



Coordinate System:
 NAD 1983 HARN StatePlane Oregon North FIPS 3601 Feet Int
 Data Source:
 Clackamas County, Metro Data Resouce Center



**Roadway, Pedestrian, and Bicycle Projects
 East County - Southern Portion**

Figure
ES P

H:\profile11732 - Clackamas County TSP\Task_11_EvaluateProjects\Remaining Gaps&Deficiencies\Roadway, Pedestrian and Bicycle Master Projects.mxd