

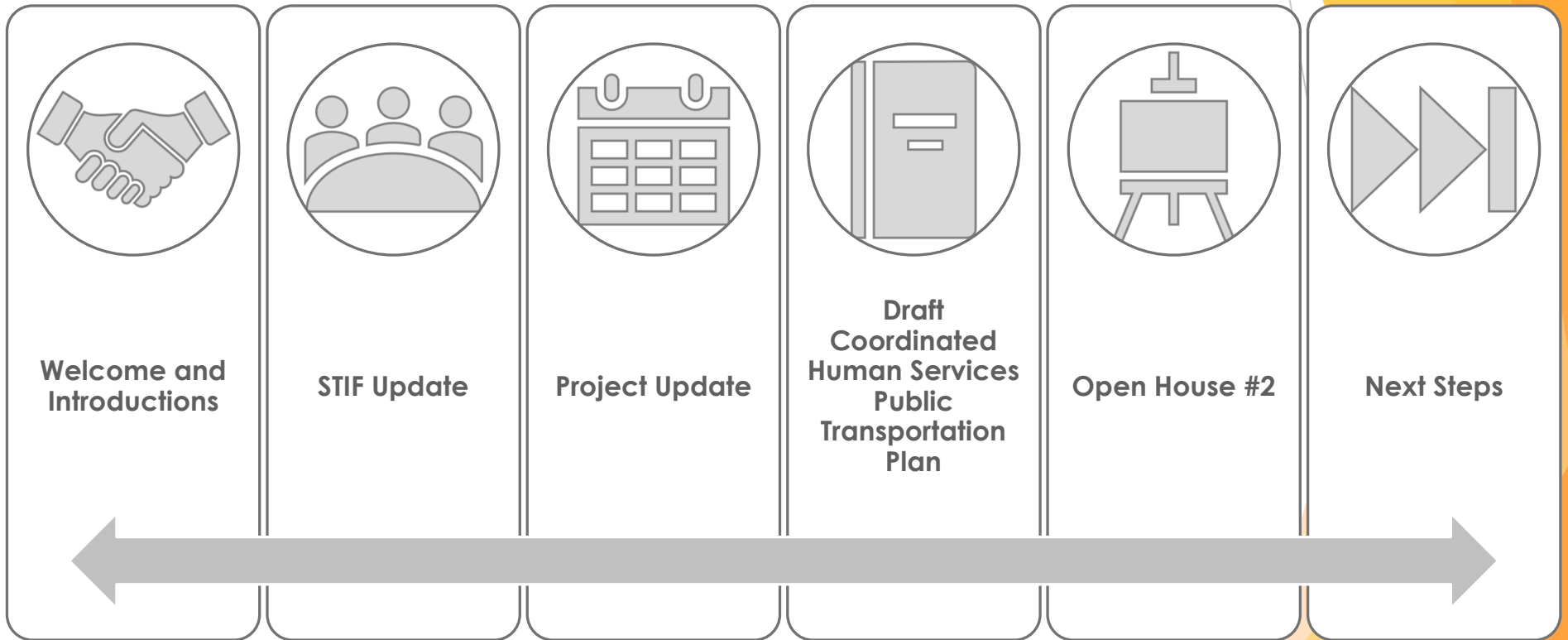


Harney County Coordinated Transportation Plan

Technical Advisory Committee (TAC) Meeting #3

November 14, 2022

Meeting Agenda



Welcome and Introductions



STIF Update



Project Update

	Apr	May	June	July	Aug	Sep	Oct	Nov	Dec
Project Management	Kick-Off			TAC #1		TAC #2		TAC #3	
Public Workshops				#1				#2	
Stakeholder Interviews									
Tech Memo #1: Existing Conditions & Demographics				Draft/ Final					
Tech Memo #2: Public Outreach Summary						Draft/ Final			
Tech Memo #3: Transit Needs						Draft/ Final			
Tech Memo #4: Transit Strategies						Draft/ Final			
Draft Plan								Draft/ Revised	
Adoption									



Draft Coordinated Human Services Public Transportation Plan

Plan Purpose

- ▶ **Identifies strategies** that can carry forward Harney County's vision for transportation services in its region
- ▶ **Provides for a community approach** to support residents and employees by maintaining/enhancing existing services over the next 5 years
- ▶ **Serves as a decision-making resource** for the County by offering:
 - Identified service and facility strategies
 - Order-of-magnitude cost estimates
 - Implementation timeframes
 - A coordination tool for transportation service providers



Draft Coordinated Human Services Public Transportation Plan

Plan Organization

- ▶ **Volume 1: main document that includes key findings and recommendations**
 - Section 1: Introduction
 - Section 2: Current Services, Facilities, & Funding
 - Section 3: Demographic Profile
 - Section 4: Community Engagement
 - Section 5: Transportation Service Needs:
 - Section 6: Strategies and Implementation
- ▶ **Volume 2: technical appendix containing technical memoranda**
 - Appendix A: Existing Services and Demographic Profile
 - Appendix B: Initial Public Workshop and Stakeholder Interviews
 - Appendix C: Human Services Transportation Needs
 - Appendix D: Human Services Transportation Strategies and Implementation Plan



Draft Coordinated Human Services Public Transportation Plan

Volume 1

▶ **Section 1: Introduction**

Provides an overview of the plan, its purpose, and the way its organized.

▶ **Section 2: Current Services, Facilities, & Funding**

Presents current transportation services and facilities available throughout Harney County and the funding sources that have supported them.

▶ **Section 3: Demographic Profile**

Identifies populations across Harney County that may be considered transportation disadvantaged as well as the locations of jobs and residences for those who are employed in the county.



Draft Coordinated Human Services Public Transportation Plan

Volume 1

▶ Section 1: Introduction

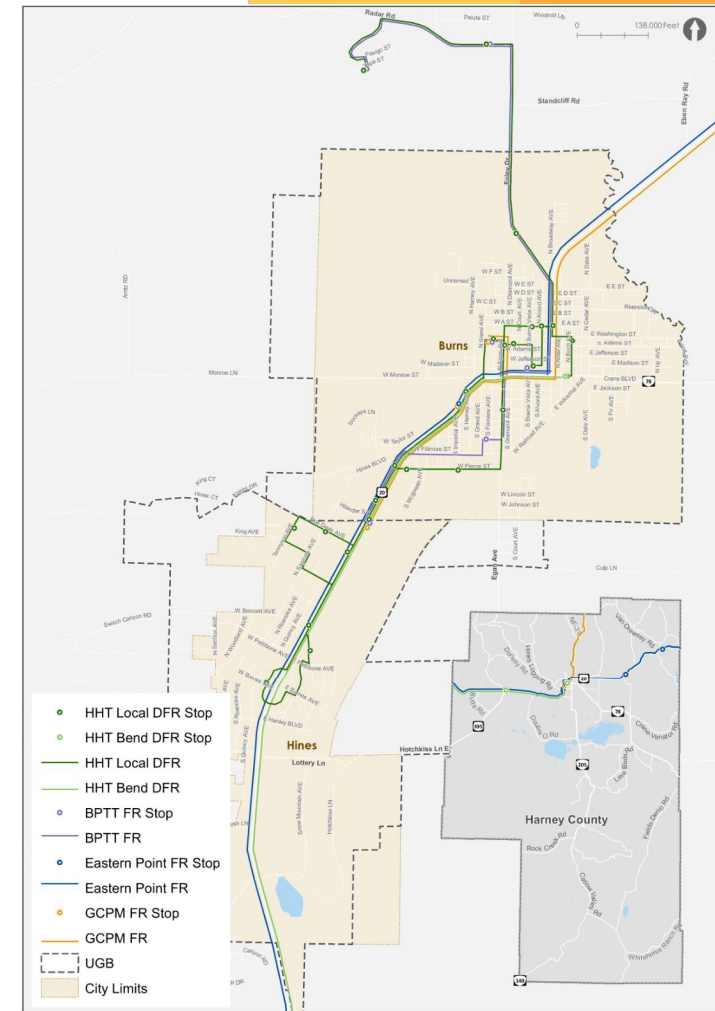
Provides an overview of the plan, its purpose, and the way its organized.

▶ **Section 2: Current Services, Facilities, & Funding**

Presents current transportation services and facilities available throughout Harney County and the funding sources that have supported them.

▶ Section 3: Demographic Profile

Identifies populations across Harney County that may be considered transportation disadvantaged as well as the locations of jobs and residences for those who are employed in the county.



Draft Coordinated Human Services Public Transportation Plan

Volume 1

▶ Section 1: Introduction

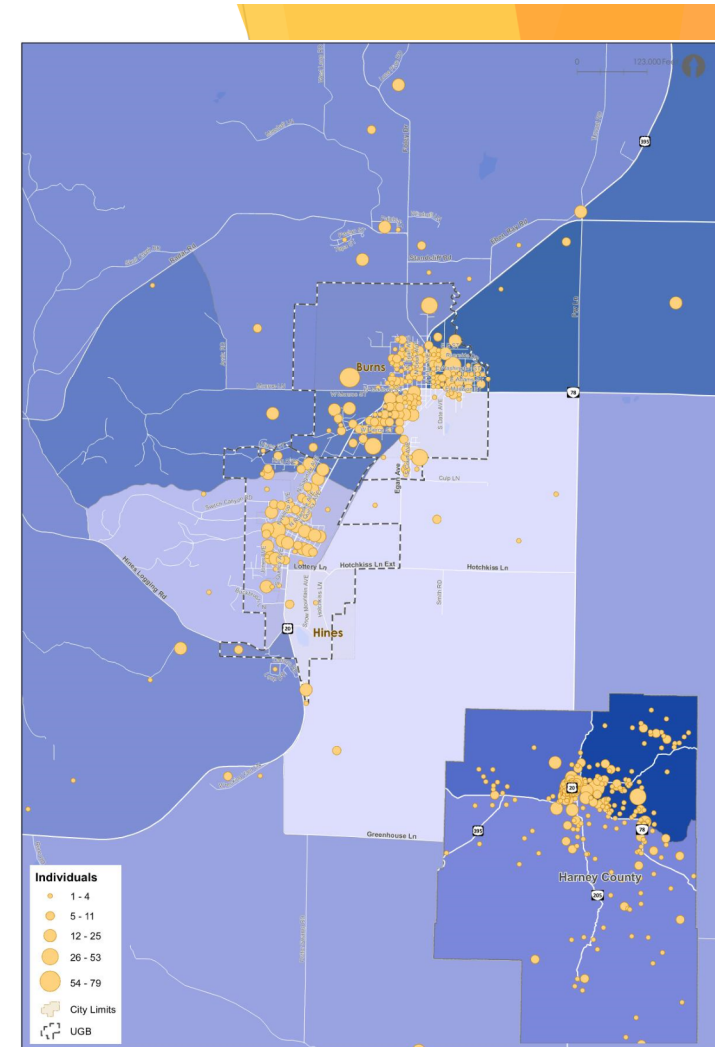
Provides an overview of the plan, its purpose, and the way its organized.

▶ Section 2: Current Services, Facilities, & Funding

Presents current transportation services and facilities available throughout Harney County and the funding sources that have supported them.

▶ Section 3: Demographic Profile

Identifies populations across Harney County that may be considered transportation disadvantaged as well as the locations of jobs and residences for those who are employed in the county.



Draft Coordinated Human Services Public Transportation Plan

Volume 1

▶ Section 4: Community Engagement

Documents the public outreach efforts as part of this plan update, including transportation provider surveys, stakeholder interviews, Technical Advisory Committee (TAC) meetings, and public open houses.

▶ Section 5: Transportation Service Needs

Describes transportation service needs on local, county-wide, and inter-county levels, including services, facilities, vehicle fleet, information and technology, funding, and coordination.

▶ Section 6: Strategies and Implementation Plan

Recommends strategies that can address the transportation service needs and provides a roadmap to help carry them out, including level of cost and implementation.

The image shows a survey form titled "Harney County Coordinated Transportation Plan Survey". The form is divided into several sections:

- Survey:** A header section with a Harney County logo and introductory text explaining the purpose of the survey.
- 1. Please tell us about yourself:** Fields for Name, Name of Organization, Address, Email address, and Phone number.
- 2. Please select the option that best describes your organization. Select all that apply.** A list of checkboxes for various organization types: Public transit agency, Public human services agency, Private for-profit transportation provider, Non-profit transportation provider, Youth transportation provider (e.g., school transportation, Head Start), Advocacy organization, Faith-based organization, Non-profit human services agency, and Other (specify).
- 3. Tell us a little about your services:** Fields for Hours of Operation, Days of Operation, and Approximate number of clients that need transportation services per month.
- 4. What populations do you serve? (Check all that apply!)** A list of checkboxes for various population groups: Persons with physical disabilities, Older adults or Seniors, Persons with developmental or cognitive disabilities, Homeless, Persons with low-income, Veterans, Persons with limited English proficiency, Youth (18 or younger), Students, People with chronic medical needs (e.g., kidney dialysis), Tribal members, People in recovery from substance abuse, General Public, and Other (specify).
- 5. Where do your clients have the greatest need for transportation? (Check the top 3 choices)** A list of checkboxes for various needs: Banking, Childcare, Community events, Court appointments, and Drug/Alcohol Treatment.
- 6. What main transportation challenges do your clients face? (Check the top 3 choices)** A list of checkboxes for various challenges: Local routine trips such as appointments, work, and grocery shopping aren't accessible by transit; Lack of understanding on how to use transit; Transit trips take longer than a client's capacity for travel; Difficulty due to lack of a permanent address; Lack of resources to pay for transportation services; Public transit service does not operate late enough in the evening; Need for companion/care giver when traveling; Path to bus stops or stations is not accessible for those with mobility devices; Public transit service does not operate on weekends; An accessible vehicle isn't always available; and Bus stops are not close enough to residences and/or destinations like work.



Draft Coordinated Human Services Public Transportation Plan

Volume 1

▶ Section 4: Community Engagement

Documents the public outreach efforts as part of this plan update, including transportation provider surveys, stakeholder interviews, Technical Advisory Committee (TAC) meetings, and public open houses.

▶ **Section 5: Transportation Service Needs**

Describes transportation service needs on local, county-wide, and inter-county levels, including services, facilities, vehicle fleet, information and technology, funding, and coordination.

▶ Section 6: Strategies and Implementation Plan

Recommends strategies that can address the transportation service needs and provides a roadmap to help carry them out, including level of cost and implementation.



Draft Coordinated Human Services Public Transportation Plan

Volume 1

▶ Section 4: Community Engagement

Documents the public outreach efforts as part of this plan update, including transportation provider surveys, stakeholder interviews, Technical Advisory Committee (TAC) meetings, and public open houses.

▶ Section 5: Transportation Service Needs

Describes transportation service needs on local, county-wide, and inter-county levels, including services, facilities, vehicle fleet, information and technology, funding, and coordination.

▶ **Section 6: Strategies and Implementation Plan**

Recommends strategies that can address the transportation service needs and provides a roadmap to help carry them out, including level of cost and implementation.



Draft Coordinated Human Services Public Transportation Plan

Section 6: Strategies and Implementation Plan

Demand Response Service

Strategies	Initial Cost	Ongoing Cost	Level of Effort	Level of Need	Timeframe
Maintain existing services	N/A	\$\$\$	Easy	High	Ongoing
Continued encouragement for subscription service	N/A	N/A	Easy	Medium	Ongoing
No fare for trips within 10 miles of Burns/Hines	N/A	\$	Easy	Medium	0-1 Years / Ongoing
Reduced fare for preschoolers / students without school bus service (and without access to DFR service)	N/A	\$\$	Easy	Medium	2-3 Years / Ongoing
Reduced fare for long-distance trips	N/A	\$\$\$	Easy	Low	4-5+ Years / Ongoing
Reduced fare for riders with fixed / very low income	N/A	\$\$	Difficult	Medium	4-5+ Years / Ongoing
Extended Sunday service hours	N/A	\$\$	Moderate	Low	Long-Term / Ongoing
Reduced fare for medical patients with regular critical appointments in Bend / Redmond; increased coordination with GOBHI to get fare covered	N/A	\$\$\$	Moderate	Medium	4-5+ Years / Ongoing



Draft Coordinated Human Services Public Transportation Plan

Section 6: Strategies and Implementation Plan

Burns/Hines Deviated Fixed-Route Service

Strategies	Initial Cost	Ongoing Cost	Level of Effort	Level of Need	Timeframe
Maintain existing services	N/A	\$\$	Easy	High	Ongoing
Free service for all riders (continued)	N/A	\$\$	Easy	High	Ongoing
No deviation fee for students	N/A	\$\$	Easy	Low	0-1 Years / Ongoing
Expanded service coverage to east Burns / west Hines	N/A	\$\$	Moderate	Medium	2-3 Years / Ongoing
New stops; evaluate regularly	N/A	\$\$	Moderate	Medium	2-3 Years / Ongoing
Reduced weekday headways with two buses operating route	N/A	\$\$\$	Moderate	Medium	4-5+ Years / Ongoing
Extended weekday service hours (continued service to BPT bus stops)	N/A	\$\$	Moderate	Low	4-5+ Years / Ongoing
Extend weekend service hours (include BPT bus stops)	N/A	\$\$	Moderate	Low	4-5+ Years / Ongoing
Add Sunday service (include BPT bus stops)	N/A	\$\$	Moderate	Low	4-5+ Years / Ongoing



Draft Coordinated Human Services Public Transportation Plan

Section 6: Strategies and Implementation Plan

Regional Deviated Fixed-Route Service (Bend/Redmond + Other Areas)

Strategies	Initial Cost	Ongoing Cost	Level of Effort	Level of Need	Timeframe
Maintain existing services	N/A	\$	Easy	High	Ongoing
Free service to Bend / Redmond (continued)	N/A	\$\$	Easy	High	Ongoing
Continued encouragement for riders to acquire subscription service	N/A	N/A	Easy	Medium	Ongoing
Weekly Saturday service to Bend / Redmond (if Eastern POINT service doesn't return – see Coordination Strategies)	N/A	\$\$	Difficult	Medium	4-5+ Years / Ongoing
Evaluate need for (free) deviated fixed-route service to southern county to offset demand response operating cost (consider alternating service days with Bend / Redmond service)	N/A	\$\$\$	Difficult	Low	4-5+ Years / Ongoing



Draft Coordinated Human Services Public Transportation Plan

Section 6: Strategies and Implementation Plan

Vehicle Fleet

Strategies	Initial Cost	Ongoing Cost	Level of Effort	Level of Need	Timeframe
Continue using Fleetio technology to track and keep up with bus maintenance	N/A	\$	Easy	High	Ongoing
Replace vehicles as needed (consider alternative fuel sources/fuel efficient options, including electric)	\$\$\$	\$	Moderate	High	0-1 Years / Ongoing
Add bike racks to remaining fleet with no racks and to new buses that are purchased for fleet expansion	\$	\$	Easy	High	0-1 Years / Ongoing
Purchase additional vehicles / expand fleet (consider alternative fuel sources/fuel efficient options, including electric)	\$\$	\$	Moderate	High	2-3 Years / Ongoing



Draft Coordinated Human Services Public Transportation Plan

Section 6: Strategies and Implementation Plan

Facilities

Strategies	Initial Cost	Ongoing Cost	Level of Effort	Level of Need	Timeframe
Benches at all Burns / Hines Deviated Fixed-Route bus stops	\$	\$	Moderate	High	0-1 Years / Ongoing
Shelters at key bus stops along Burns / Hines Deviated Fixed Route	\$\$	\$	Difficult	Medium	2-3 Years / Ongoing
Expanded bus barn facility (consider electric charging capabilities)	\$\$\$	\$	Difficult	Medium	4-5+ Years / Ongoing
Enhanced bus stop or mobility hub	\$\$-\$\$\$	\$	Difficult	Low	4-5+ Years / Ongoing



Draft Coordinated Human Services Public Transportation Plan

Section 6: Strategies and Implementation Plan Information & Technology

Strategies	Initial Cost	Ongoing Cost	Level of Effort	Level of Need	Timeframe
Keep information on services up to date (e.g., update brochures each time something changes)	N/A	\$	Easy	High	Ongoing
Attend select community events with a booth and/or transit vehicle to help spread word of services	N/A	\$	Moderate	Low	Ongoing
Provide regular news releases to local media (radio and/or print if available) to inform public about changes (e.g., new vehicles, new services, etc.)	N/A	\$\$	Easy	Medium	Ongoing
Advertise free fixed-route service in Burns/Hines to riders aged K-12 to capture those who live within walking distance of the route (consider coordinating with schools/providing flyers)	N/A	\$	Moderate	Medium	Ongoing
Post flyers about services at businesses (especially those adjacent to bus stops), churches, food banks, medical clinics, etc.	\$	\$	Moderate	Medium	Ongoing



Draft Coordinated Human Services Public Transportation Plan

Section 6: Strategies and Implementation Plan Information & Technology

Strategies	Initial Cost	Ongoing Cost	Level of Effort	Level of Need	Timeframe
Provide schedules / route maps at bus stops and businesses and on website	\$	\$	Moderate	High	0-1 Years / Ongoing
Advertise on brochures / website about all available services in county	\$	\$	Moderate	Medium	0-1 Years / Ongoing
Enhance Harney Hub Transit branding at bus stops and on buses	\$\$	\$	Moderate	Medium	2-3 Years / Ongoing
Enhance web design of website / make user-friendly	\$\$	\$	Moderate	Low	4-5+ Years / Ongoing
Consider investigating smart phone applications for riders that are compatible with Easy Rides	N/A	\$	Difficult	Low	4-5+ Years / Ongoing
Consider investigating other Easy Rides capabilities that can improve operations	N/A	\$	Moderate	Low	4-5+ Years / Ongoing



Open House #2

- ▶ **Date:** Tuesday, November 15
- ▶ **Location:** Harney County Senior Center
- ▶ **Time:** 11:00 AM to 1:00 PM (in tandem with Meal Days)
- ▶ **Format:** Standard open house format with poster boards presenting draft plan and comment forms for participants to document their thoughts
- ▶ **Virtual Option:** Online survey is available on project website for those who would like to participate virtually

projectcomment.com/harneycountycp



STATION #1: Project Information

PROJECT PURPOSE

Harney County is updating its Coordinated Human Services Public Transportation Plan (Coordinated Plan) to identify coordination strategies that enhance efficiency and mobility of public transit, paratransit services, and human services transportation programs.

The Coordinated Plan is a "living" document that identifies public transportation needs within Harney County and solutions to those needs to be implemented over a five-year period. This plan is intended to organize the various public transportation providers in Harney County and provide them with a strategy to enhance their services and allocate funding.

Harney County's current Coordinated Plan is from 2016. Since then, community needs for transportation service have evolved and the County has also introduced new services.

Updating the Coordinated Plan will help guide the County's investments in transportation services and facilities over the next five years that continue helping community members reach their destinations.

PROJECT SCHEDULE

We are here!

PROJECT TASK	APR	MAY	JUN	JUL	AUG	SEP	OCT	NOV	DEC
Project Management									
Existing Conditions & Demographic Profile									
Public Outreach									
Transportation Service Needs and Strategies									
Draft Coordinated Plan									

Transportation Provider Surveys
 Technical Advisory Committee (TAC) Meeting
 Stakeholder Interviews
 Public Outreach Event
 County Court Presentation/Adoption

PROJECT FINAL STEPS

After today's Open House, the project team will incorporate your feedback into a revised draft of the Coordinated Plan Update and present the plan to the County Court next month for adoption. Visit the project website to stay involved in these final steps! Right now, the project website contains a path to an online survey if you would prefer to provide your comments from today's Open House through a virtual format.

CONTACT INFORMATION

Lisa Moody
 Transportation Manager
lisa@harneyhub.org
 541-573-3030

projectcomment.com/harneycountycp

Next Steps

1. TAC to provide feedback on Draft Coordinated Transportation Plan to County by Monday, November 21
2. Project team to incorporate TAC feedback into a revised Draft Coordinated Transportation Plan and develop graphical document
3. Project team to present revised Draft Coordinated Transportation Plan to County Court in December to consider for adoption

