



# TECHNICAL MEMORANDUM

Date: November 28, 2023 Project #: 23021.050  
To: Project Management Team  
From: Kittelson & Associates, Inc.  
Project: Curry County Transportation System Plan Update  
Subject: Public Meeting #2 Summary

## INTRODUCTION

---

This outreach report summarizes the outcome of the second public meeting for the Curry County Transportation System Plan (TSP) Update. The purpose of the public meeting was to re-orient the community to the project and its goals, present them with the draft list of preferred alternatives for the County's transportation system, and gather their input. This feedback will be incorporated into the preferred alternatives and carried into the TSP.

The public meeting was held at the Curry County Administrative Annex in Gold Beach on Wednesday, October 18, 2023, from 5:00 to 7:00 PM. The public was notified about the event with the following mechanisms:

- A post card was posted to the Curry County Board of Commissioners website, the County Planning and Building website, the bulletin boards at the Planning Department, and it was emailed to the County's list of interested persons.
- Announcements were posted in various places on the project website (<https://projectcomment.com/currycountytsp>) including 'Home,' 'Latest News,' and 'Meetings,' which automatically sent notifications to website subscribers.

The in-person event drew one (1) participant outside of the project team that is a community member.

For community members who preferred to participate online, a virtual public meeting that provided the same content as the in-person event was available and advertised through the project website from October 18 to November 3. In addition, community members were informed about an interactive commenting map that is available on the project website and will be for the duration of the project. The virtual public meeting drew two (2) participants. The following section summarizes the feedback received during the in-person and virtual public meetings.

## PUBLIC MEETING FEEDBACK

---

Large format poster boards were displayed at the in-person event that presented project background information, the draft TSP goals, the preferred alternatives for Curry County's transportation system, and the next steps in the project and how the community can stay involved. Comment forms were also provided for participants to complete.

Feedback received during the in-person and virtual events is summarized below. Public meeting materials and public input are attached to this summary.

- There is general concern for the recommendation to add 6-foot paved shoulders to County roads considering the rural context, history of slides, and topographic constraints.
- There is general concern for potential roadway allocation changes that could be considered in the future for US 101 through Gold Beach in other planning efforts.
- The conflicts between the enhanced pedestrian crossing on US 101 in Gold Beach between McKay's Market and 3<sup>rd</sup> Street are concerning and should be evaluated.
- Community members were given additional opportunity to comment on the recommended TSP goals:
  - Safety is a huge concern in our community (Gold Beach). People regularly speed through town without regard to pedestrians. We have lots of near misses and accidents. Bicyclists traveling 101 through our area take their lives in their hands because they are not respected as having a right to be on the road.
  - I don't like the idea of my road taxes being used for bikes. Highways and bikes don't mix. Our highway (101) is way too curvy and narrow for bikes. Bikes don't contribute to the upkeep of our roads.
- There is general support for the recommended roadway connections in the county.
  - In recent years, we've seen weather and fire events close down Highway 101, leaving only unsafe and/or extremely long alternatives to receive necessary supplies and access to medical care outside of the limited availability of services inside our communities.
- There is general support for the recommended non-motorized alternatives in the county.
  - Most of the county is not bikeable or walkable, especially for people who are disabled. Could do more.
- There is general support for the recommended traffic safety alternatives in the county.
- There is general support for the recommended priority projects in the county with additional input to include a "bicyclist on bridge signal" on the Patterson Bridge in Gold Beach.

# ATTACHMENTS

## Public Meeting Post Card



### ARE YOU INTERESTED IN TRANSPORTATION?

Would you like to help the County identify potential improvements to the transportation system?

Then please join us for a public meeting on **Wednesday, October 18, 2023** at the **Curry County Administrative Annex – 94235 Moore Street in Gold Beach** – to learn about an ongoing project with Curry County and the Oregon Department of Transportation (ODOT) to update the County's Transportation System Plan (TSP). **The doors will open at 5:00 PM.**

The County is at the stage of the planning process where roadway and intersection projects are being evaluated and recommended. The public meeting will revisit the TSP goals and objectives and present the draft recommendations for improving Curry County's transportation system.

Can't join us in-person? Then please visit the project website at **www.projectcomment.com/currycountytsp** from **Wednesday, October 18 through Friday, November 3** to participate online. The website will provide the same information and offer the same opportunities to provide your input.



## Public Meeting Poster Boards

### STATION 1: ABOUT THE PROJECT

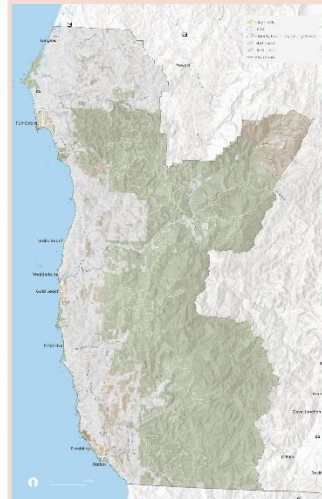
#### WHAT IS THE PROJECT PURPOSE?

Update Curry County's 2005 Transportation System Plan (TSP).

#### WHAT IS A TSP?

The Curry County TSP is a long-range planning document that describes the county's transportation system and the projects needed to meet transportation goals over the next 20 years.

#### WHAT IS THE TSP STUDY AREA?



#### WHY IS UPDATING THE TSP IMPORTANT?

Since 2005, transportation needs in the county have evolved. Updating the TSP will help move Curry County's road network toward a resilient multimodal system that people of all ages and abilities can use. The TSP also:

1. Provides a basis for the Capital Improvement Plan (CIP)
2. Provides a basis for System Development Charges (SDC)
3. Provides a basis for land development conditions of approval
4. Provides rationale for making investments and land use decisions
5. Ensures that the long-term transportation needs will be met
6. Protects right of way for needed improvements
7. Provides consistency between state, regional, and local planning
8. Provides a link to the Statewide Transportation Improvement Program (STIP) and other funding sources

For ADA (Americans with Disabilities Act) or Civil Rights Title VI accommodations translation/interpretation services, or more information call 503-731-4128, TTY: (800) 735-2900 or Oregon Relay Service 7-1-1.



¿Hablas español? Podemos proporcionar la información de esta publicación en español. Para recibir información por favor llame al 503-731-4128.

## STATION 2: TSP GOALS & PROJECT THEMES

### GOAL 1: SAFETY AND RESILIENCY

Provide a transportation system that is safe for all transportation modes and people of all ages and abilities, and that supports community recovery and resiliency post-disaster.

### GOAL 2: SUSTAINABILITY AND RESPONSIBILITY

Create a fiscally responsible and sustainable transportation system, minimizing environmental and resource impacts.

### GOAL 3: EFFICIENCY AND VITALITY

Provide a transportation system that fosters a vibrant economy and community through the efficient movement of goods and people and through easy access to economic and recreational opportunities.

### GOAL 4: TRANSPORTATION OPTIONS AND EQUITY

Improve conditions and access for affordable transportation options – including walking, biking and other “rolling,” taking transit, and ridesharing – and minimize potential negative impacts of transportation projects on communities and groups.

### GOAL 5: COORDINATION AND COLLABORATION

Coordinate transportation projects and related land use and development policies with appropriate partner agencies and plans.

### GOAL 6: TRANSPORTATION FUNDING

Establish transportation improvement and maintenance projects that are feasible, are adequately funded, and provide positive returns on investment.



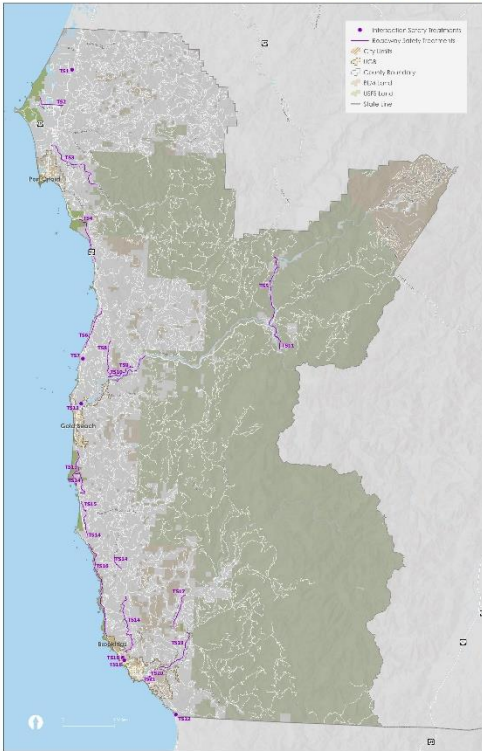
## STATION 3: PREFERRED ROADWAY CONNECTIONS



**These roadways have been identified as priority routes for improvements to strengthen resiliency in the transportation network, increase redundancy in the system, and provide alternatives to US 101 in emergency situations. Do you agree with these routes being priority?**



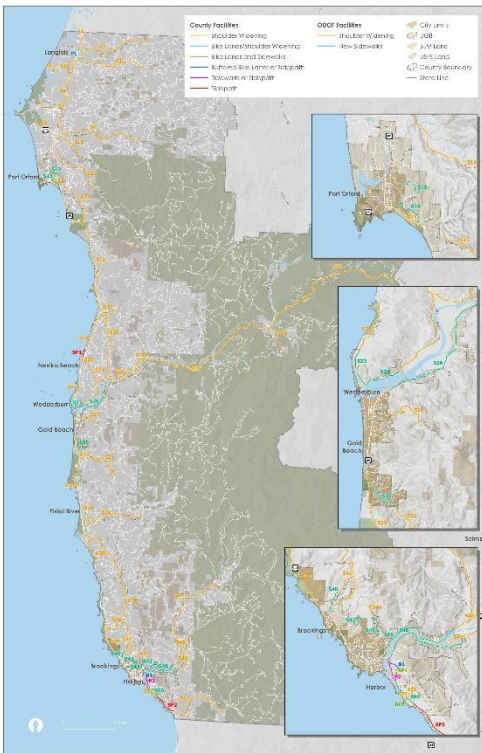
## STATION 4: PREFERRED TRAFFIC SAFETY ALTERNATIVES



Do you agree with these preferred traffic safety alternatives?

Map ID	Location	Safety Treatment
TS1	US 101 / Floras Lake Loop Road	Passing lane location evaluation
TS2	Airport Road	Wider edgelines; advisory curve warning signs
TS3	Elk River Road	Centerline/shoulder rumble strips; curve warning signs and chevron
TS4	US 101, Cape Ferrelo Rd to Martin Ranch Rd	Centerline/shoulder rumble strips; curve warning signs and chevron
TS5	Agnless-Illahe Rd	Widened paved shoulders
TS6	Ophir Rd	Widened paved shoulders; wider edgelines
TS7	US 101 / Nesika Rd-Edson Creek Rd	Right- and left-turn lanes on US 101; increased sight distance
TS8	Cedar Valley Rd	Raised/recessed pavement markers; wider edgelines; curve warning signs and chevrons
TS9	N Bank Rogue River Rd	Raised/recessed pavement markers; wider edgelines; curve warning signs and chevrons
TS10	Jerry's Flat Rd US 101 to UGB UGB to County Limits	Raised/recessed pavement markers; wider edgelines; curve warning signs and chevrons Centerline/shoulder rumble strips; curve warning signs and chevrons
TS11	Oak Flat Rd	Wider edgelines; curve warning signs and chevrons
TS12	US 101 / N Bank Rogue River Rd-Old Coast Rd	Intersection sight distance / fishing wayfinding evaluation
TS13	US 101 Cape Sebastian Corridor	Variable speed limit signs; icy curve warning system
TS14	OR 255 (Carpenterville Hwy)	Centerline/shoulder rumble strips; curve warning signs and chevron
TS15	Pistol River Loop	Raised/recessed pavement markers; wider edgelines; curve warning signs and chevrons
TS16	US 101; Pacific Highland Dr to China Mountain Rd	Centerline/shoulder rumble strips; curve warning signs and chevron
TS17	Gardner Ridge Rd	Centerline/shoulder rumble strips; curve warning signs and chevron
TS18	US 101 / Carpenterville Hwy	Truck turn movement evaluation
TS19	N Bank Chetco River Rd MP 1 to UGB UGB to County Limits	Raised/recessed pavement markers; wider edgelines; curve warning signs and chevrons Centerline/shoulder rumble strips; curve warning signs and chevron
TS20	Shopping Center Ave / Zimmerman Ln	All-way stop control; increased sight distance
TS21	Lower Harbor Rd: horizontal curve	High friction surface treatment; curve warning flashers
TS22	US 101 / Del-Cur Supply Co-Op Site Access	Right-in/right-out at US 101 access; improved site access on Stateline Road

## STATION 5: PREFERRED NON-MOTORIZED ALTERNATIVES



These roadway projects are specified as non-motorized alternatives, however, many of them offer multiple benefits. Shoulder widening also improves safety for motorists, creates space for drivers to pull over in emergency situations, and overall creates stronger alternative routes to the state highway system. Do you agree with these preferred alternatives?

## STATION 6: PRIORITY ROADWAYS FOR IMPROVEMENT



Roadway funding is limited in Curry County. For this reason, the roadways shown on this display have been identified as potential priority routes for the County to focus improvements as funding becomes available. The project identification numbers here correlate to those shown at Stations 4 and 5. Do you agree that these routes take priority?

## STATION 7: CLOSE-OUT INFORMATION

### PROJECT NEXT STEPS

Over the next few months, the project team will refine these preferred alternatives based on the input you gave us today and begin developing the Draft Transportation System Plan Update. The Draft TSP Update will be considered for adoption in early 2024.

### PARTICIPATE VIRTUALLY

The project website contains a path to a Virtual Public Meeting that presents the same information as this in-person event, if you would prefer to provide your comments in a virtual format.

[PROJECTCOMMENT.COM/CURRYCOUNTYTSP](https://PROJECTCOMMENT.COM/CURRYCOUNTYTSP)

### STAY INVOLVED

For updates about how the Curry County TSP Update is progressing and how you can stay involved, visit the project website!

[PROJECTCOMMENT.COM/CURRYCOUNTYTSP](https://PROJECTCOMMENT.COM/CURRYCOUNTYTSP)

### CONTACT INFORMATION

If you have any other questions or comments after participating in the Public Meeting, please contact the project team at the project website:

[PROJECTCOMMENT.COM/CURRYCOUNTYTSP](https://PROJECTCOMMENT.COM/CURRYCOUNTYTSP)



## Public Meeting Comment Form



### Public Meeting #2

Curry County Transportation System Plan (TSP) Update

**October 18, 2023 | 5:00 to 7:00 PM**

County Chambers: 94235 Moore St, Gold Beach, OR 97444

## COMMENT FORM

Welcome to the second Public Meeting for the Curry County Transportation System Plan (TSP) Update! The purpose of this event is to:

1. re-orient you to the project and its goals,
2. get your input on the preferred roadway and intersection alternatives the project team is recommending for the TSP Update, and
3. inform you on how to stay involved through the remainder of the project.

This comment form gives you an opportunity to provide us with your input! It includes questions for you to consider as you make your way through the Public Meeting Stations set up around the room. Begin with visiting Station 1 to learn about the project.

Once you've made your way around the stations and added your comments to this form, please drop this form in the comment box back at the welcome table.

**Thanks for your participation!**

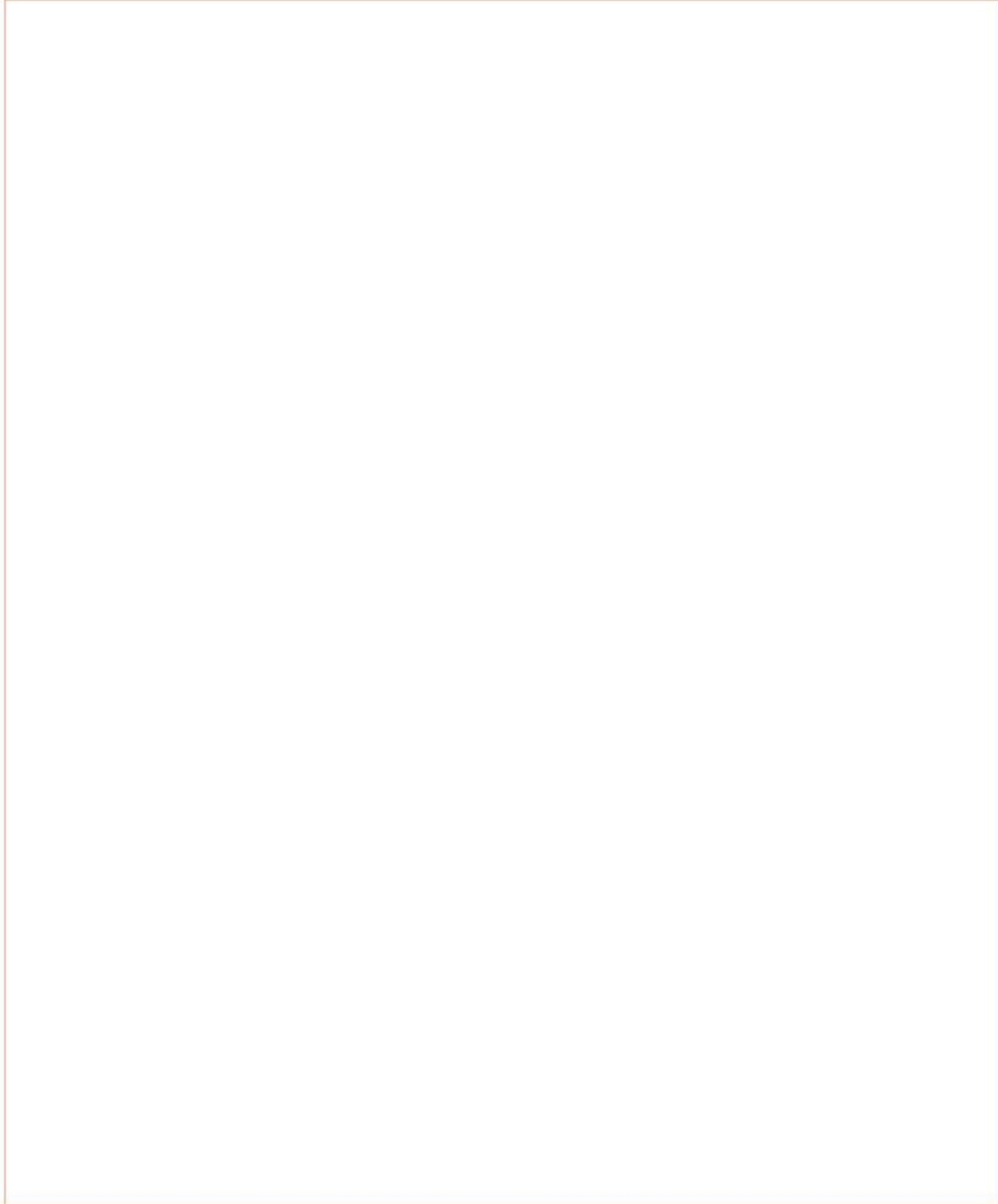
---

Habla español? Podemos proporcionar la información de esta publicación en español. Para recibir información por favor llame al 503-731-4125.

For ADA (Americans with Disabilities Act) or Civil Rights Title VI accommodations translation/interpretation services, or more information call 503-731-4128, TTY (800) 735-2900 or Oregon Relay Service 7-1-1.



Please provide us with your input on the TSP Goals, the preferred roadway and intersection alternatives on display, and any other alternatives that the project team should consider.



## Virtual Public Meeting Site (Welcome Page)

# CURRY COUNTY TSP UPDATE - VIRTUAL PUBLIC MEETING #2 VIRTUAL WORKSHOP

WELCOME

ABOUT THE PROJECT

TSP GOALS

ROADWAY CONNECTIONS

NON-MOTORIZED ALTERNATIVES

TRAFFIC SAFETY ALTERNATIVES

PRIORITY PROJECTS

## WELCOME!

### Welcome to Virtual Public Meeting #2 for the Curry County Transportation System Plan (TSP) Update!



This Virtual Public Meeting provides community members with an opportunity to share their feedback on transportation needs they see in Curry County and follow the progress of the ongoing TSP Update. Your feedback is vital because it will help us create a transportation system that meets the needs of everyone in the community.

In each "room" (or tab) located at the top of this page, you will find various information that will collectively support updating the County's TSP. This is where we need your input. The rooms include:

**About the Project:** provides general information on the project, including "What is a Transportation System Plan and why does it need to be updated?"

**TSP Goals:** presents the goals and objectives developed for the TSP Update to ensure that the plan and the recommended projects it will contain align with the vision of the County and the community.

**Roadway Connections:** presents projects related to enhancing roadway connectivity within the County.

**Non-Motorized Alternatives:** presents projects related to improving facilities for people walking and biking.

**Traffic Safety Alternatives:** presents projects related to improving motor vehicle, pedestrian, and bicycle safety on Curry County roadways.

**Priority Projects:** summarizes the top-priority projects selected for Curry County.

Please tell your family, friends, and neighbors about this site so we can hear from them before the Virtual Public Meeting ends on **Friday, November 3rd**.

## Virtual Public Meeting Site (Example of Interactive Page)

# CURRY COUNTY TSP UPDATE - VIRTUAL PUBLIC MEETING #2 VIRTUAL WORKSHOP

- WELCOME
- ABOUT THE PROJECT
- TSP GOALS
- ROADWAY CONNECTIONS
- NON-MOTORIZED ALTERNATIVES
- TRAFFIC SAFETY ALTERNATIVES

### PRIORITY PROJECTS

## TSP GOALS

The draft goals developed by the project team will guide the Curry County TSP Update. They will also:

- help ensure key issues are addressed throughout the planning process,
- serve as the basis for selecting and prioritizing transportation system improvement projects for the TSP Update, and
- inform recommendations for policy language that will serve as guidance for future land use decision making.

### We need your feedback!

The goals are provided in the exhibit to the right. Clicking this link will take you to a page where you can review the goals and provide your input on them.

## EXHIBITS

[TSP Goals](#)

## DONE EXPLORING THIS ROOM?

[» ROADWAY CONNECTIONS ROOM](#)

## Project Website Interactive Commenting Map & Feedback To-Date

### CURRY COUNTY TSP UPDATE

This map allows the public to provide thoughts and feedback on the current transportation system within Curry County.

[View a list of existing comments →](#)

Having trouble viewing or using the map? Please contact Miranda Barrus at [mbarrus@kittelson.com](mailto:mbarrus@kittelson.com) with your comments.

© 2007-2023 Kittelson & Associates, Inc. unless otherwise noted.

You are logged in.

- [Edit Map or Description](#)
- [View & Export Comments](#)
- [Edit Profile](#)
- [Log out](#)

The map displays Curry County with various towns and landmarks labeled, including Broadbent, Camas Valley, Myrtle Creek, Langlois, Denmark, Gaylord, Powers, Tri-City, Siskiyou, and others. Major roads like 101 and 238 are shown. An 'INSTRUCTIONS' box on the right states: 'Double-click anywhere on the map to tell us about a transportation-related thought or concern you have about Curry County.' The map interface includes a search bar at the top, map style controls (Satellite, Topography, Map), and zoom controls.

1.



Added November 15 2022

Left turn into Co-op is problematic.

Liked 0 times

**0 replies**

2.



Added November 15 2022

Visitors to Secret Beach create issues on state highway.

Liked 0 times

**0 replies**

3.



Added March 16 2023

DelCur Supply - only one driveway in and no double lane to turn - have to pull into a turn lane going wrong way or cause a major backup on Hwy50 and unsafe passing on right

Liked 0 times

**0 replies**

4.



Added March 16 2023

Winchuck River Road to east and Oceanview to west - lots of traffic on both roads coming in and out both ways on 101 - may need traffic light?

Liked 0 times

**0 replies**

5.



Added March 16 2023

Humane Society Thrift Shop - inadequate parking causes patrons to park on shoulder of highway causing issues to traffic heading south, especially when they pull back out heading north across 4 lanes. Wider shoulder might help.

Liked 0 times

**0 replies**



6.



Added March 16 2023

Need better street lighting along here - lots of foot traffic going across bridge. Also, South Bank Chetco Road comes into 101 just before bridge and RV's turning onto the highway move directly into far right lane, causing slow ups (and they often do NOT stop!) Need a merging lane there.

Liked 0 times

0 replies

7.



Added March 16 2023

5th Street - two grocery stores, plywood mill off Railroad Street (BIG trucks), KFC/TacoBell, transit stop, doctors and clinics - major traffic. There is a 4-way light there but still a lot of accidents, near misses.

Liked 0 times

0 replies

8.



Added March 16 2023

Oak Street - major walking/biking site to and from schools. Lots of traffic entering 101. Needs a 4-way stop and signaled cross walks.

Liked 0 times

0 replies

9.



Added March 16 2023

Carpenterville/Dawson - site of Lumber Mill - very difficult area to enter Hwy 101 - needs a signal.

Liked 0 times

0 replies