

# Clackamas County Transportation System Plan Update

## Geographic Area Project Meeting #2

*Northwest Area*

September 18<sup>th</sup>, 2012



# Meeting Agenda

9:00 – 11:00 a.m.

- Meeting Purpose and Outcomes/ Agenda Overview
- Review Project Evaluation Approach
- Discuss Project Evaluation Recommendations
- Alternatives Analysis Scenarios
- Public Comments
- Next Steps

# Meeting Purpose and Outcomes

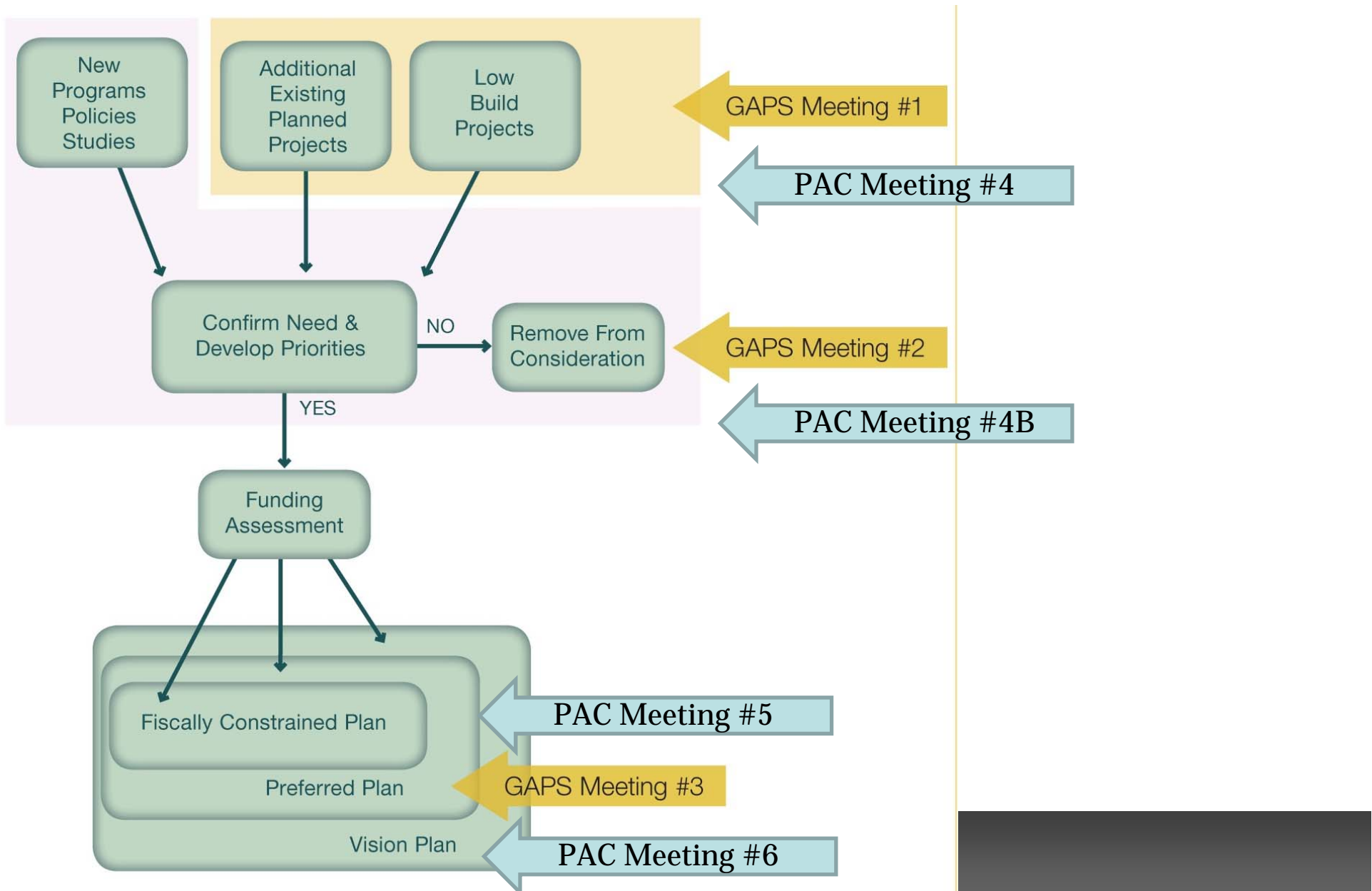
## > Purpose

- Review project evaluation approach
- Provide input on the draft project evaluation recommendations
- Discuss alternatives analysis scenarios

## > Desired Outcomes

- Understanding of project evaluation approach
- Agreement on Initial recommendation for each project under 'Action'
- Understanding of "Next Steps"

# Project Evaluation Process



# Project Evaluation Approach

- Identified Projects
  - Projects previously identified as needed (“*Previously Planned Projects*”)
  - Projects suggested by the public (“*Public Suggested Projects*”)
- Used what was learned in the “Existing Conditions” report to help determine if projects were still needed
- Made an assessment of how each project supported the goals
- Determined if additional projects were needed (“*New Identified Projects*”)
- Sounds simple, but....it was a very iterative process

# Previously Planned Projects

- These projects were identified in the following existing plans:
  - Clackamas County TSP (Chapter 5)
  - Clackamas County Pedestrian Master Plan
  - Clackamas County Bicycle Master Plan
  - Regional Transportation Plan
- These projects are numbered between U001-U999

# Public Suggested Projects

- Developed based on public input
- Project Numbers between U1000 – U1999

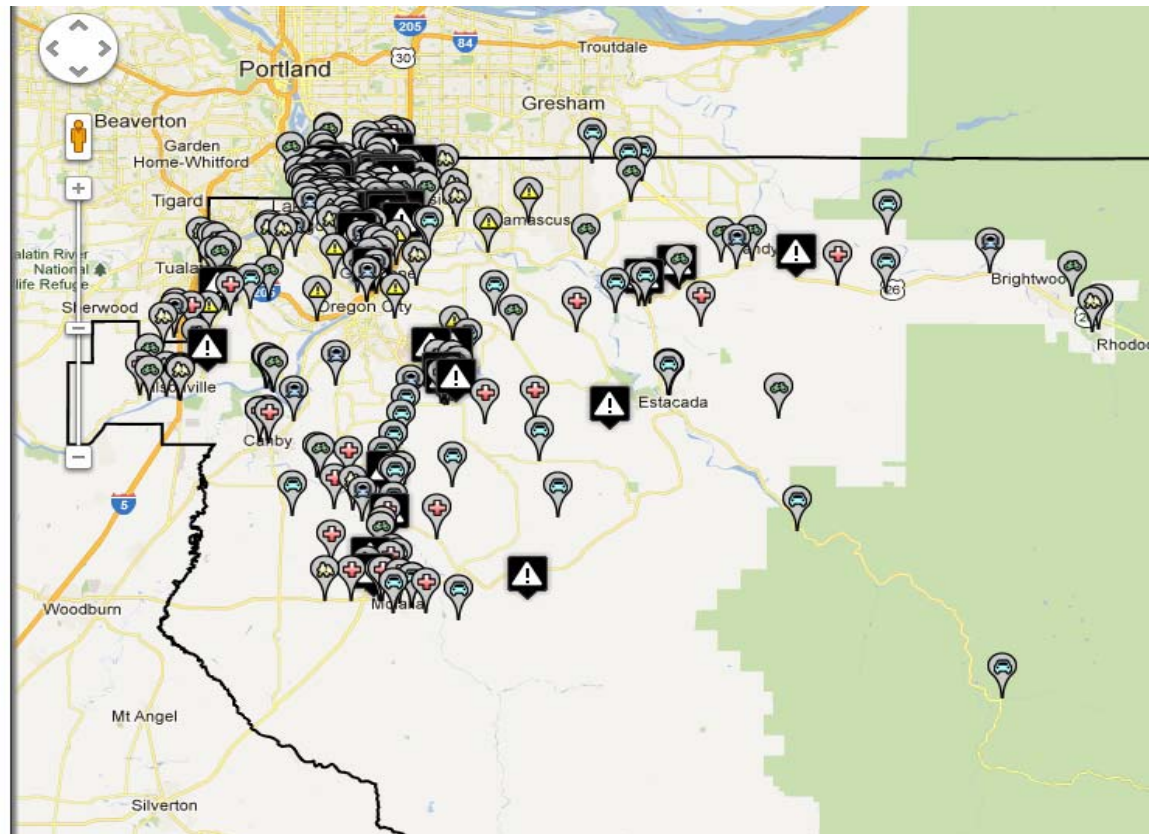
## CLACKAMAS COUNTY TSP — VIRTUAL WORKSHOP #1

Please tell us your ideas, concerns, and thoughts regarding the transportation system in the County.

[View a list of existing comments →](#)

Having trouble viewing or using the map? Please contact Erin Ferguson at [eferguson@kittelson.com](mailto:eferguson@kittelson.com) with your comments.

© 2007-2012 Kittelson & Associates, Inc. unless otherwise noted.  
[Admin login](#)



CLACKAMAS COUNTY *Update*  
TRANSPORTATION SYSTEM PLAN





# New Identified Projects

- Address remaining gaps and deficiencies
- Developed projects with TSP Vision, Goals, and Objectives in mind
- Include roadway, pedestrian, bicycle, safety, and transit projects
- Project Numbers U2000 and greater



# Project Evaluation Approach

## Evaluation Considerations

### ➤ Addresses a Gap? (Yes or No)

*A gap is defined as missing facilities or connections in the sidewalk system, the bicycle network and roadway connections, and densely populated areas without transit service.*

### ➤ Addresses a Deficiency? (Yes or No)

*A deficiency is defined as facilities that do not perform up to defined standards, such as an intersection with too much delay and congestion, a sidewalk or bicycle lane that is too narrow, or a roadway with a poor safety history.*

### ➤ Impact on Transportation System

*Description of how a project fills a gap or addresses a deficiency, if relevant.*

# Project Evaluation Approach

## > TSP Goal Assessment

*Determine whether project supports each goal based on data generated for the Existing and Future Conditions Report.*

○ = does not support goal,

◐ = somewhat supports goal, and

● = definitely supports goal.

- Goal 1 = Sustainable
- Goal 2 = Local Businesses and Jobs
- Goal 3 = Livable and Local
- Goal 4 = Safety and Health
- Goal 5 = Equity
- Goal 6 = Fiscally Responsible

# Project Evaluation Approach

- Three possible actions recommended for the project, based on the evaluation:
  - Advance in evaluation process,
  - Advance in evaluation process but revise, or
  - Consider removing.

# Project Evaluation Matrix

Attachment 2: Project Evaluation Matrix - Northwest

9/11/2012

U000 - U999: Previously Planned Projects
1000 - 1999: Public Suggested Projects
2000 - 2999: New Identified Projects

Legend	
	Does not support goal.
	Somewhat supports goal.
	Definitely supports goal.

TSP Update ID	RTP ID	Project Name / Street Name	Segment / Locations	Project Description	Addresses a Gap?	Addresses a Deficiency?	Impact on Transportation System	TSP Goal Assessment of Project						Action
								Goal 1: Sustainable	Goal 2: Local Businesses and Jobs	Goal 3: Liveable and Local	Goal 4: Safety and Health	Goal 5: Equity	Goal 6: Fiscally Responsible	
1013	-	Stafford Rd	65th Ave / Stafford Rd intersection	Construct roundabout to replace existing T-intersection	No	Yes	Improves intersection operations	●	◐	●	●	◐	◐	Advance in evaluation process
1014	-	Wilsonville Rd	Wilsonville Rd / Bell Rd intersection	Realign roadway and grade improvements	No	Analysis Needed	Improves safety	◐	◐	◐	●	◐	◐	Advance in evaluation process
1015	-	Stafford Rd	Stafford Rd / Homesteader Rd intersection	Install overhead lights	No	Yes	Improves safety	◐	◐	●	●	◐	●	Advance in evaluation process
1024	-	Bell Rd	Bell Rd / Grahams Ferry Rd intersection	Evaluate stopping sight distance and grade	No	Yes	Improves safety	●	◐	●	●	●	◐	Advance in evaluation process
1063	-	Willamette River	Between cities of Oregon City and Newberg	Construct bridge	Yes	Yes	Provides connectivity across Willamette River	●	●	●	●	●	◐	Advance in evaluation process
1077	-	Advance Rd	65th Ave and Mountain Rd	Realign roadway and grade improvements	No	Yes	Improves safety	◐	◐	●	●	◐	◐	Advance in evaluation process
2029	-	Schatz Rd / 55th Ave / Meridian Way	65th Ave to Stafford Rd	Add shoulders / bikeways	Yes	No	Improves bicycle network connectivity	●	◐	●	●	●	◐	Advance in evaluation process
2030	-	Denevi Rd / Mountain Rd	Stafford Rd to Canby Ferry	Add shoulders / bikeways	Yes	No	Improves bicycle network connectivity	●	◐	●	●	●	◐	Advance in evaluation process
2031	-	Schaeffer Rd	Mountain Rd to Petes Mountain Rd	Add shoulders / bikeways	Yes	No	Improves bicycle network connectivity	●	◐	●	●	●	◐	Advance in evaluation process
2032	-	Hoffman Rd / Peach Cove Rd / Riverwood Rd	Mountain Rd to Tualatin River	Add shoulders / bikeways	Yes	No	Improves bicycle network connectivity	●	◐	●	●	●	◐	Advance in evaluation process
2033	-	Advance Rd	65th Ave to Mountain Rd	Add shoulders / bikeways	Yes	No	Improves bicycle network connectivity	●	◐	●	●	●	◐	Advance in evaluation process
2034	-	Graham's Ferry Rd	County boundary to Wilsonville Rd	Add shoulders / bikeways	Yes	No	Improves bicycle network connectivity	●	◐	◐	●	●	◐	Advance in evaluation process
2035	-	Pleasant Hill Rd / McConnel Rd / Tooze Rd	Ladd Hill Rd to Wilsonville Rd	Add shoulders / bikeways	Yes	No	Improves bicycle network connectivity	●	◐	◐	●	●	◐	Advance in evaluation process
2036	-	Bell Rd	Ladd Hill Rd to Wilsonville Rd	Add shoulders / bikeways	Yes	No	Improves bicycle network connectivity	●	◐	◐	●	●	◐	Advance in evaluation process
2037	-	Baker Rd	McConnel Rd to County boundary	Add shoulders / bikeways	Yes	No	Improves bicycle network connectivity	●	◐	◐	●	●	◐	Advance in evaluation process
2038	-	Homesteader Rd	Stafford Rd to Mountain Rd	Add shoulders / bikeways	Yes	No	Improves bicycle network connectivity	●	◐	●	●	●	◐	Advance in evaluation process
2039	-	Wisteria Rd / Woodbine Rd	Rosemont Rd to Johnson Rd	Add shoulders / bikeways	Yes	No	Improves bicycle network connectivity	●	◐	●	●	●	◐	Advance in evaluation process
2060	-	Tooze Rd / Boeckman Rd	Wilsonville City limits to Grahams Ferry Rd	Identify and consider roadway improvements that address the capacity deficiency (i.e. road widening, ITS strategies, signal timing improvements)	No	Yes	Improves safety	◐	●	◐	◐	◐	◐	Advance in evaluation process
2061	-	65th Ave	Childs Rd to Lakeview Blvd	Perform study to identify and consider roadway improvements that address the capacity deficiency (i.e. road widening, ITS strategies, signal timing improvements)	No	Yes	Improves safety	◐	●	◐	◐	◐	◐	Advance in evaluation process
2094	-	Stafford Rd	Rosemont Rd to Mountain Rd	Perform road safety audit or transportation safety review to identify appropriate safety improvements	No	Yes	Improves safety	◐	◐	●	●	●	◐	Advance in evaluation process

# Project Evaluation Recommendations

- Result of Project Evaluation Process:
  - Initial recommendation for each project under 'Action'
  - Receive feedback from TAC, GAPS, PAC and public
  - Develop TSP Update Master Project List with projects recommended for further evaluation

# Project Evaluation Discussion

- Are there any specific project evaluations GAPS members would like to discuss?
- Are there any projects which do not seem reasonable to move forward in the evaluation process?
- Are there any project evaluations you do not agree with?
- Which projects are most essential to include in the TSP?

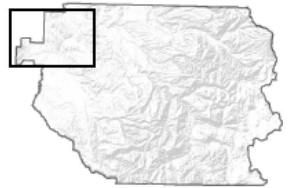
# Roadway, Pedestrian, and Bicycle Projects

## > Key Issues

- Intersection operation improvement needs
- Bringing roads up to standard for pedestrians and bicycles



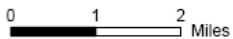
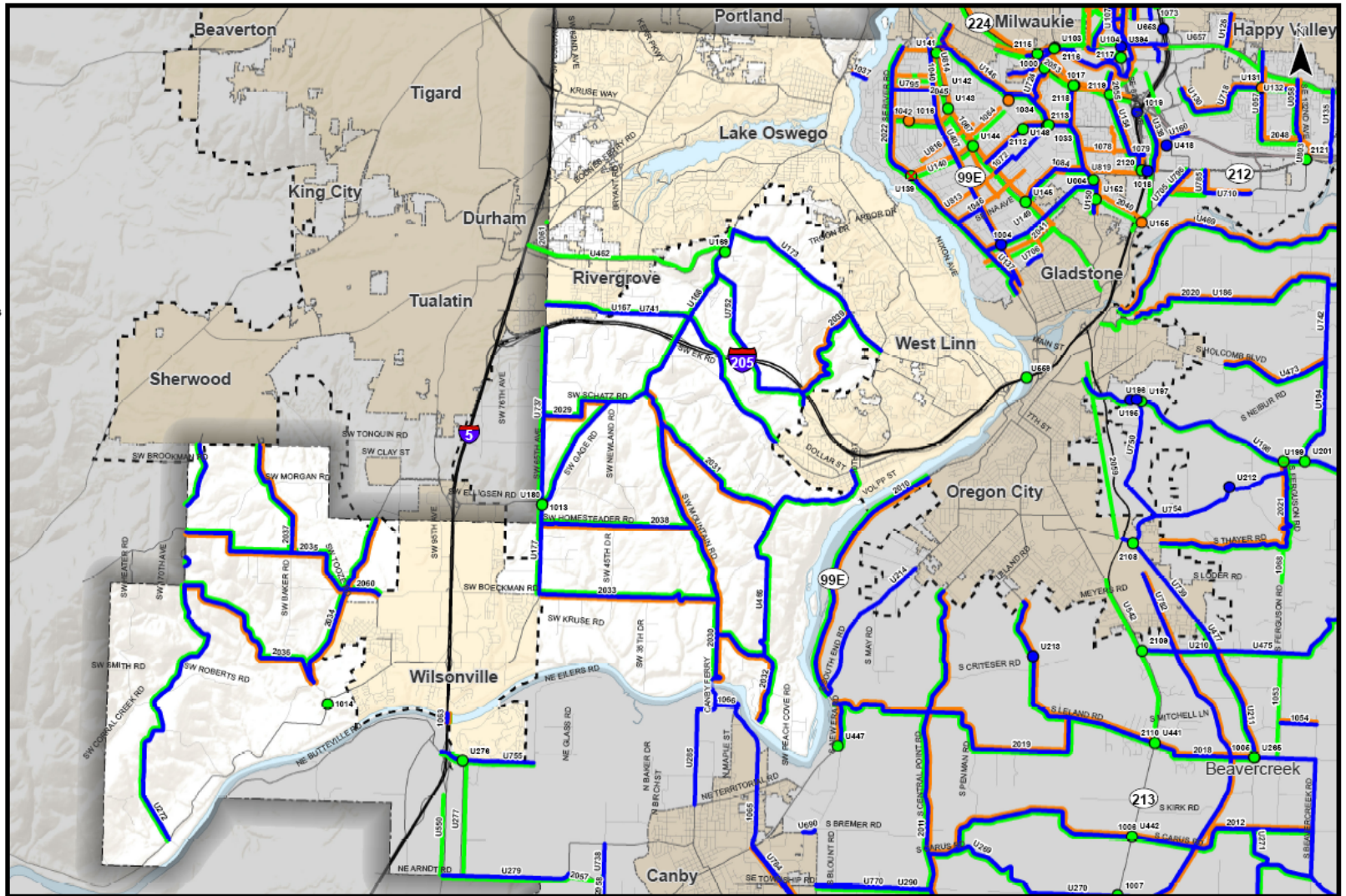
# Roadway, Pedestrian, and Bicycle Projects



## Roadway, Bicycle, and Pedestrian Projects

- ||||| "Consider Removing"
- ✗ "Consider Removing"
- Roadway
- Pedestrian
- Bicycle
- Incorporated Areas
- County Boundary
- ▣ UGB

Note:  
 Projects labeled U000-U999 are  
 "Previously Planned Projects."  
 Projects labeled 1000-1999 are  
 "Public Suggested Projects."  
 Projects labeled 2000-2999 are  
 "New Identified Projects."



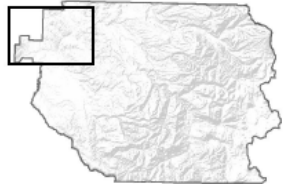
Coordinate System:  
 NAD 1983 HARN StatePlane Oregon North FIPS 3601 Feet Intl  
 Data Source:  
 Clackamas County, Metro Data Resource Center

Roadway, Pedestrian, and Bicycle Projects  
 Northwest County

Figure  
 NW P



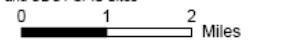
# Safety Projects



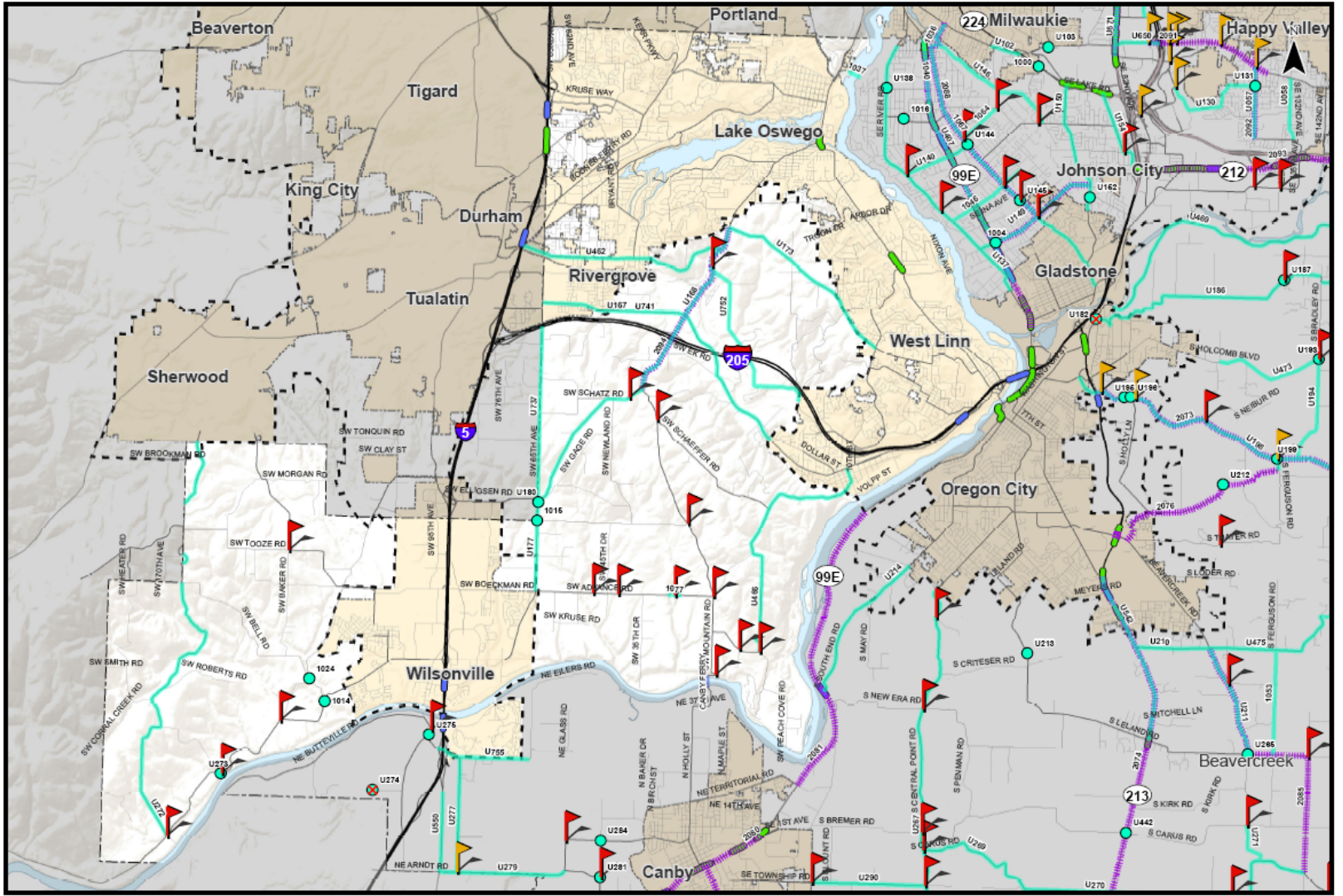
- Safety Projects**
- ▬▬▬▬ Safety Projects
  - ✗ "Consider Removing"
  - Roadway
  - Intersection
  - ▬▬▬▬ Candidate Road Safety Audit Corridors
  - ▬ County SPIS Sites
  - ▬ Safety Focus Intersections
- ODOT SPIS Sites**
- ▬ 5% Site
  - ▬ 10% Site
  - ▭ Incorporated Areas
  - ▬ County Boundary
  - ▬ UGB

Note:  
 Projects labeled U000-U999 are "Previously Planned Projects."  
 Projects labeled 1000-1999 are "Public Suggested Projects."  
 Projects labeled 2000-2999 are "New Identified Projects."

Projects, Studies, and Programs are included in the "New Identified Projects" Tables for the Candidate Road Safety Audit Corridors, County SPIS Sites, Safety Focus Intersection, and ODOT SPIS Sites



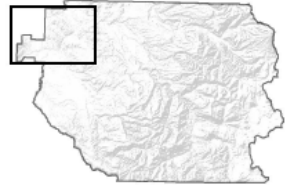
Coordinate System:  
 NAD 1983 NAD83 StatePlane Oregon North FIPS 3601 Feet Intl  
 Data Source:  
 Clackamas County, Metro Data Resource Center



**Safety Projects  
 Northwest County**

**Figure  
 NW S**

# Transit Projects

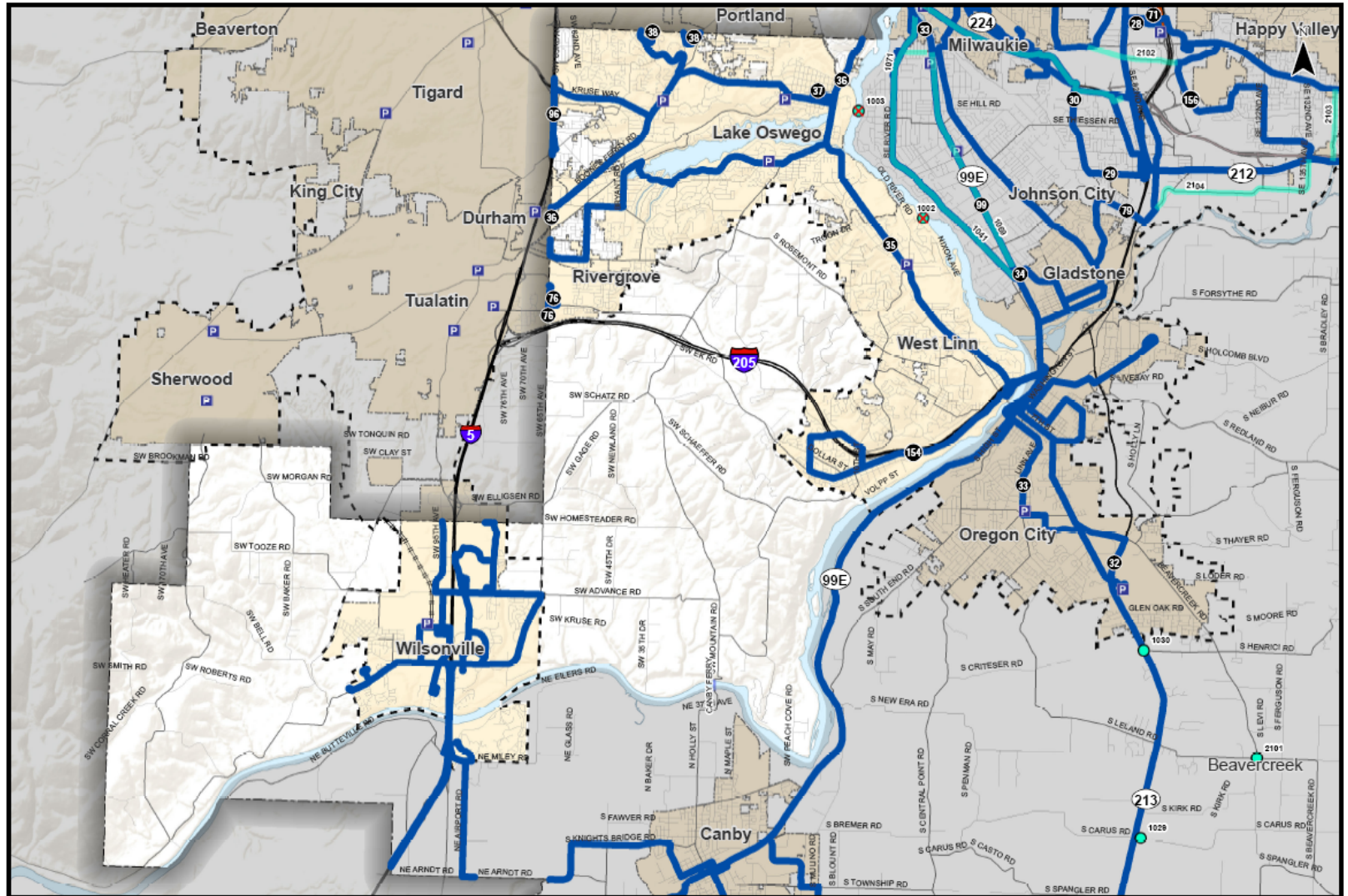


- Transit Projects**
- ||||| "Consider Removing"
  - ✗ "Consider Removing"
  - Transit Project
  - Transit Project
  - Existing Transit Service
  - Incorporated Areas
  - County Boundary
  - ▤ UGB

Note:  
 Projects labeled U000-U999 are  
 "Previously Planned Projects."  
 Projects labeled 1000-1999 are  
 "Public Suggested Projects."  
 Projects labeled 2000-2999 are  
 "New Identified Projects."

0 1 2 Miles

Coordinate System:  
 NAD 1983 HARN StatePlane Oregon North FIPS 3601 Feet Intl  
 Data Source:  
 Clackamas County, Metro Data Resource Center



Transit Projects  
 Northwest County

Figure  
 NW T



# Alternative Analysis Scenarios

In addition to identifying individual projects to address specific system gaps and deficiencies, the alternatives analysis evaluates larger system alternatives or scenarios, including:

1. Major Project Alternatives
2. Assumptions Scenarios
3. Policy Scenarios

# Public Comments

# Next Steps

- Virtual Open House (September 9 – October 1)
- Area Open House #2 (September 11, 5-7 p.m.)
- **GAPS Meetings #2 (September 10-18)**
  - **East County (Sept. 18 – 6:30-8:30 p.m.)**
- Policy Working Group Meeting #5 (September 27, 2-4 p.m.)
- PAC #4B (October 16)
- **GAPS Meetings #3 (November)**
  - **Confirm project evaluation results**
  - **Discuss Alternatives Analysis Scenario Findings**
  - **Review Draft Preferred Project List**
  - **Discuss Project Priorities**