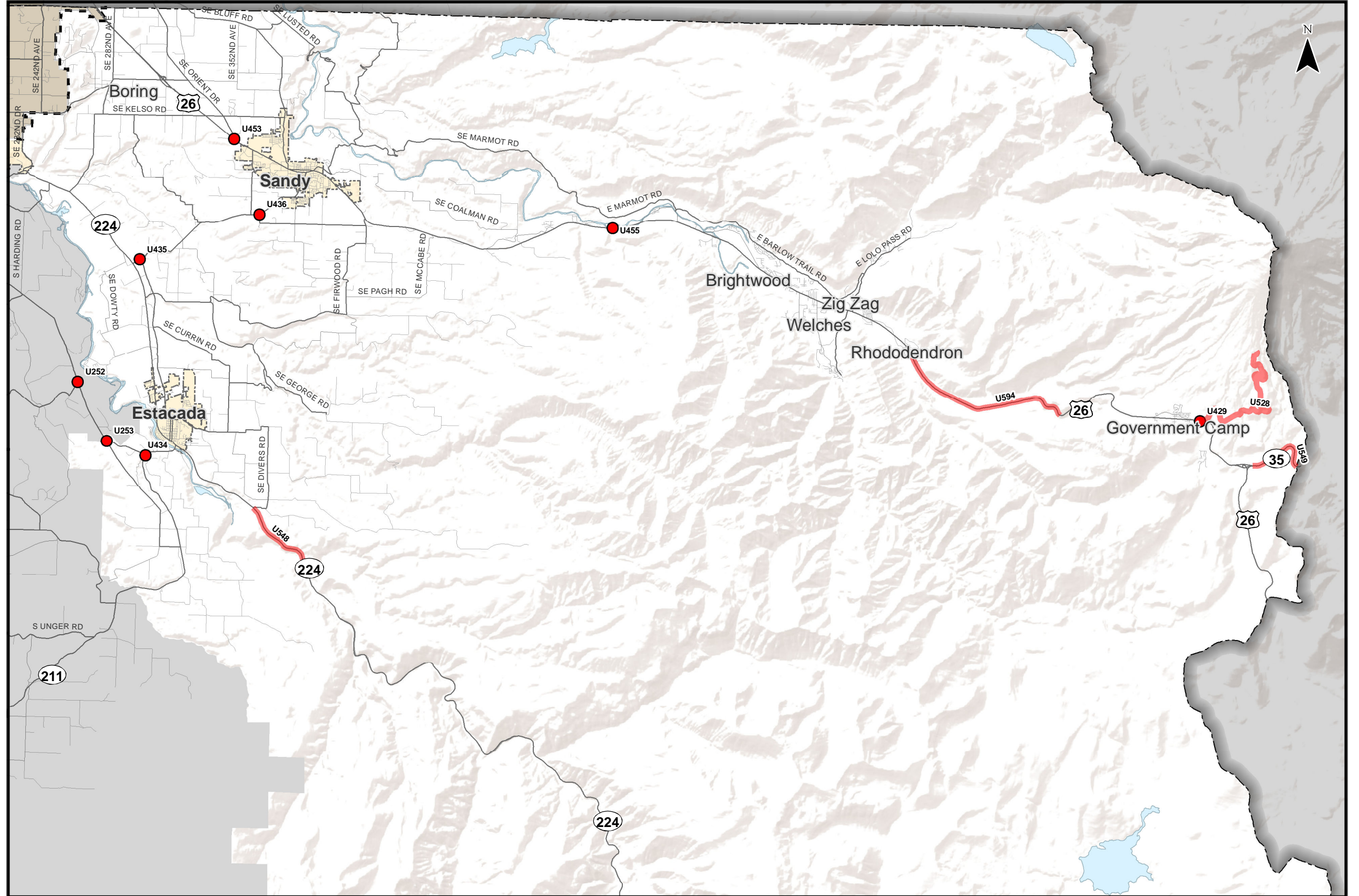
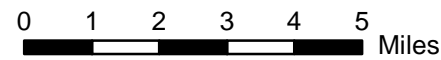


- Removed Project
- Removed Project
- Incorporated Areas
- County Boundary
- UGB



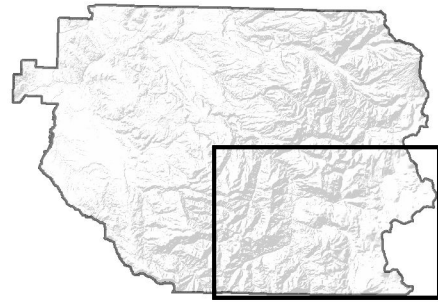
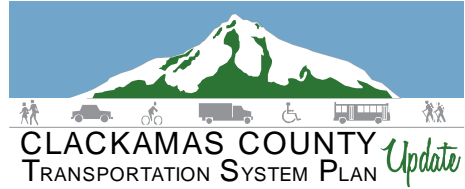
Note:
 Projects labeled U000-U999 are
 "Previously Planned Projects."
 Projects labeled 1000-1999 are
 "Public Suggested Projects."
 Projects labeled 2000-2999 are
 "New Identified Projects."



Coordinate System:
 NAD 1983 HARN StatePlane Oregon North FIPS 3601 Feet Int
 Data Source:
 Clackamas County, Metro Data Resouce Center

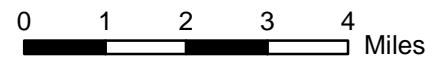
Projects Recommended to be Removed from Further Consideration East County - Northern Portion

Figure
EN T

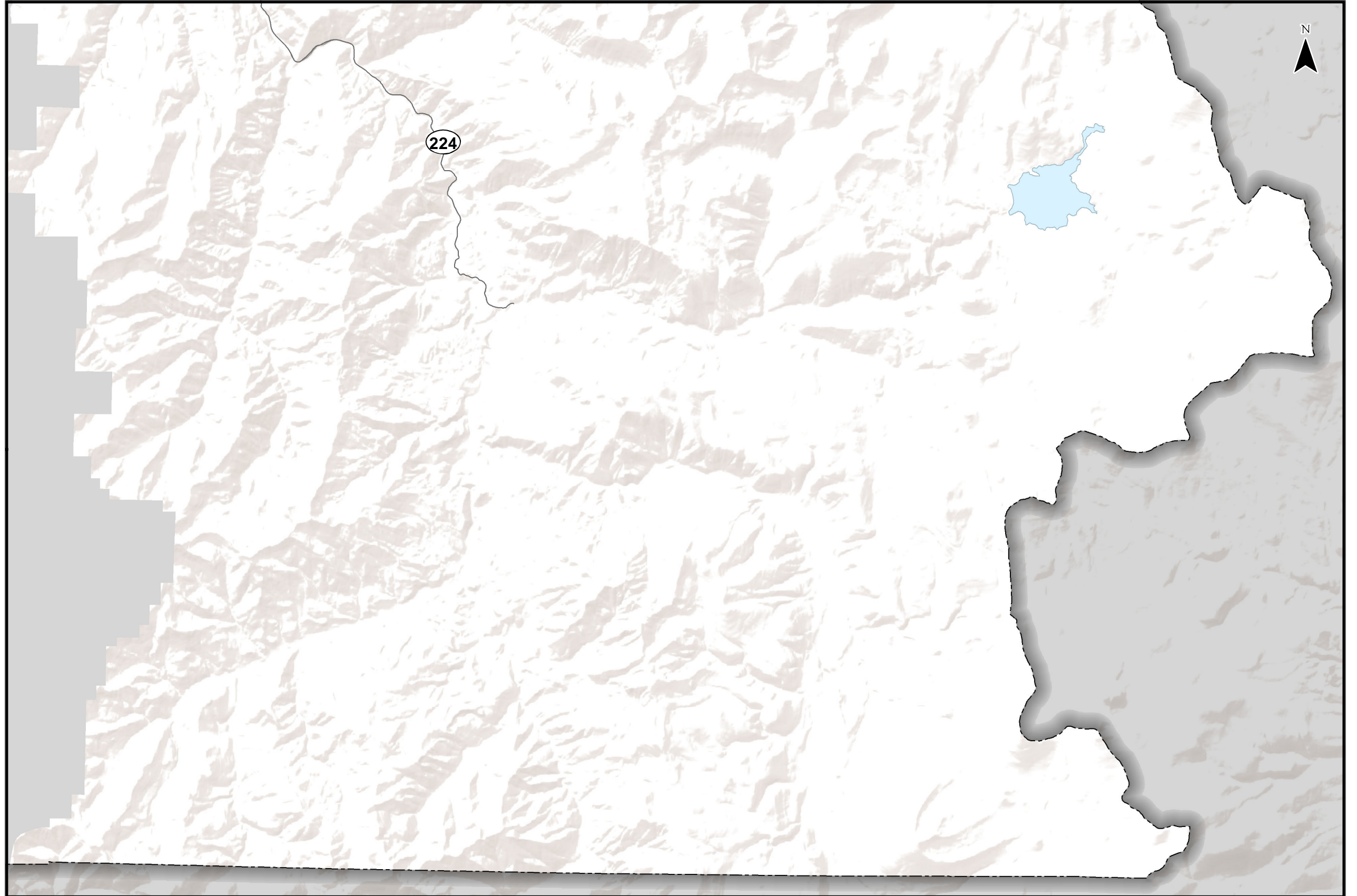


- Removed Project
- Removed Project
- Incorporated Areas
- County Boundary
- UGB

Note:
 Projects labeled U000-U999 are
 "Previously Planned Projects."
 Projects labeled 1000-1999 are
 "Public Suggested Projects."
 Projects labeled 2000-2999 are
 "New Identified Projects."

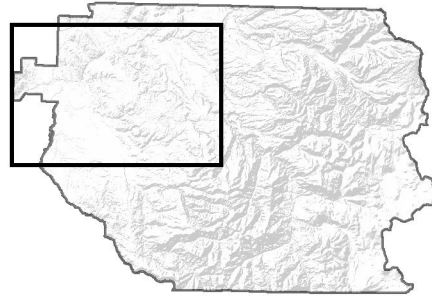
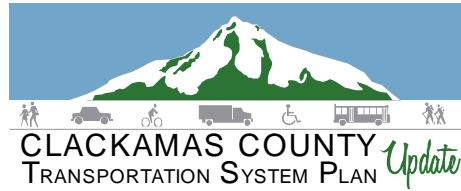


Coordinate System:
 NAD 1983 HARN StatePlane Oregon North FIPS 3601 Feet Int'l
 Data Source:
 Clackamas County, Metro Data Resource Center



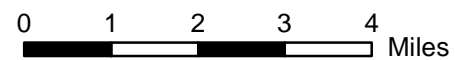
Projects Recommended to be Removed from Further Consideration East County - Southern Portion

Figure
ES T

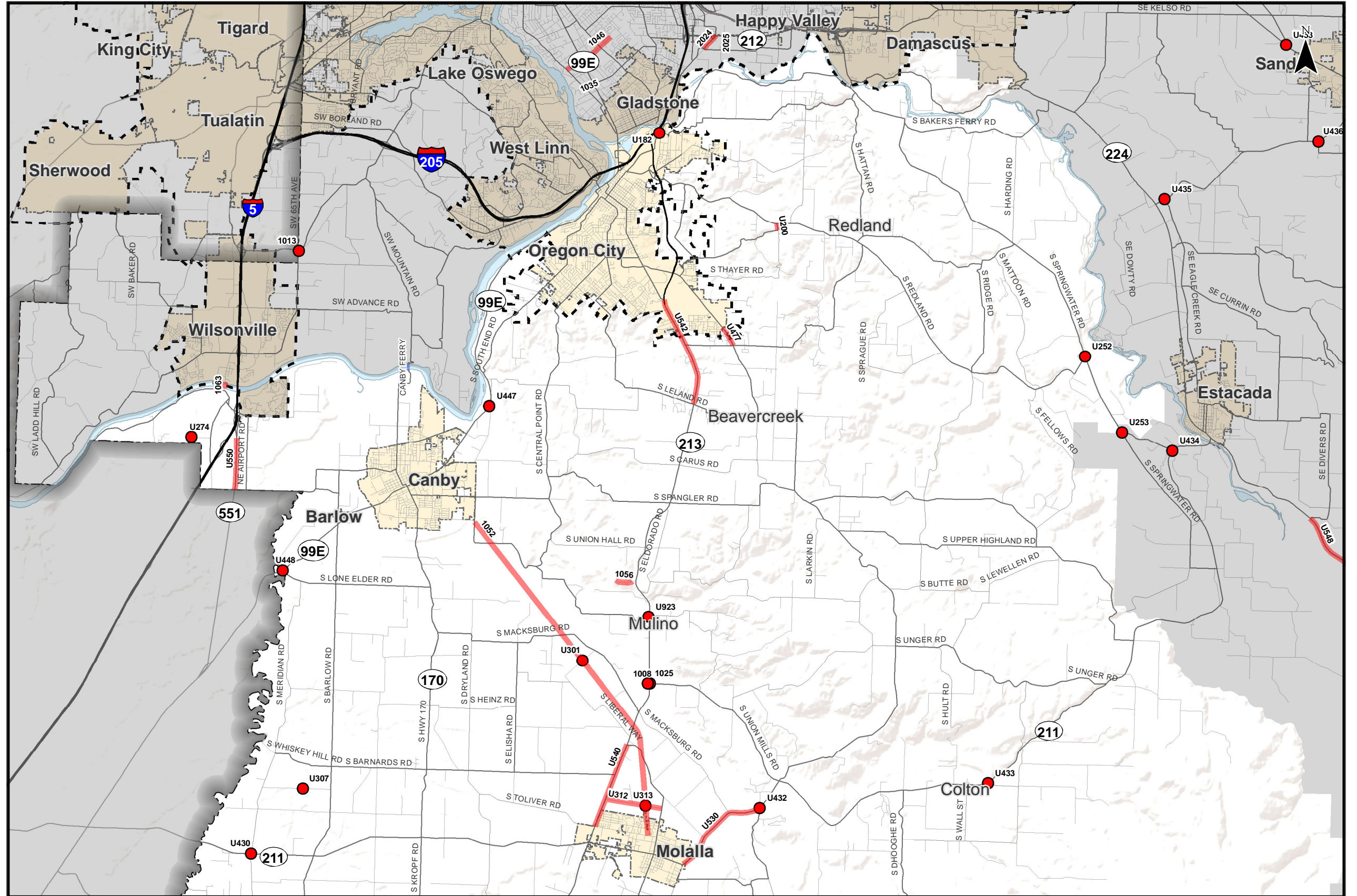


- Removed Project
- Removed Project
- Incorporated Areas
- County Boundary
- UGB

Note:
 Projects labeled U000-U999 are
 "Previously Planned Projects."
 Projects labeled 1000-1999 are
 "Public Suggested Projects."
 Projects labeled 2000-2999 are
 "New Identified Projects."

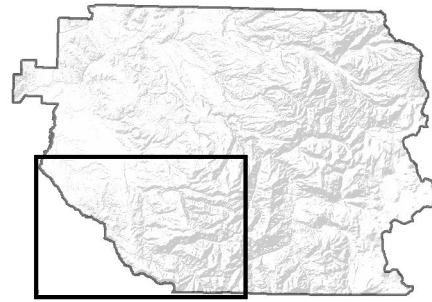
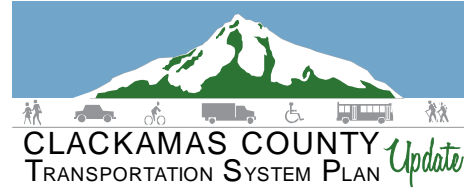


Coordinate System:
 NAD 1983 HARN StatePlane Oregon North FIPS 3601 Feet Int
 Data Source:
 Clackamas County, Metro Data Resouce Center



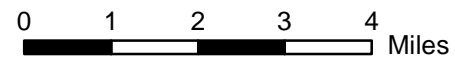
**Projects Recommended to be Removed from Further Consideration
 Southwest County - Northern Portion**

Figure
SN T

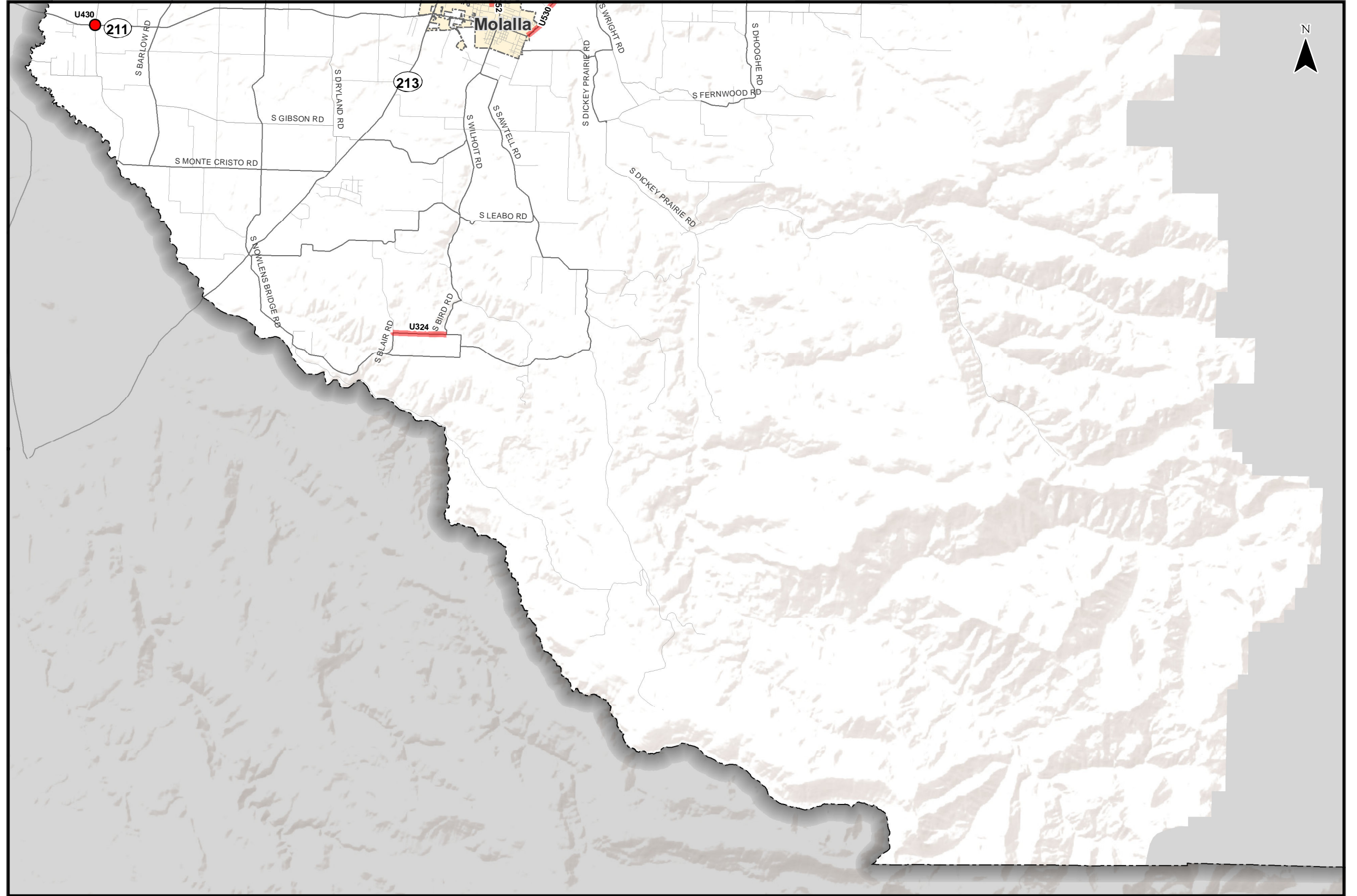


- Removed Project
- Removed Project
- Incorporated Areas
- County Boundary
- UGB

Note:
 Projects labeled U000-U999 are
 "Previously Planned Projects."
 Projects labeled 1000-1999 are
 "Public Suggested Projects."
 Projects labeled 2000-2999 are
 "New Identified Projects."

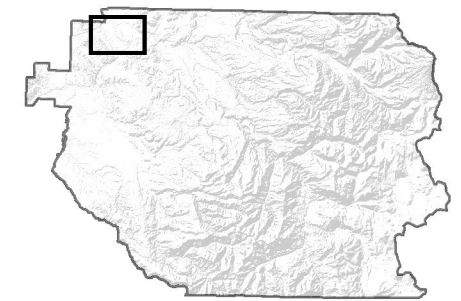
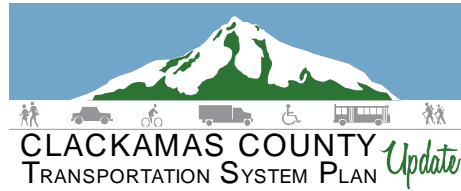


Coordinate System:
 NAD 1983 HARN StatePlane Oregon North FIPS 3601 Feet Int
 Data Source:
 Clackamas County, Metro Data Resouce Center



Projects Recommended to be Removed from Further Consideration Southwest County - Southern Portion

Figure
SS T

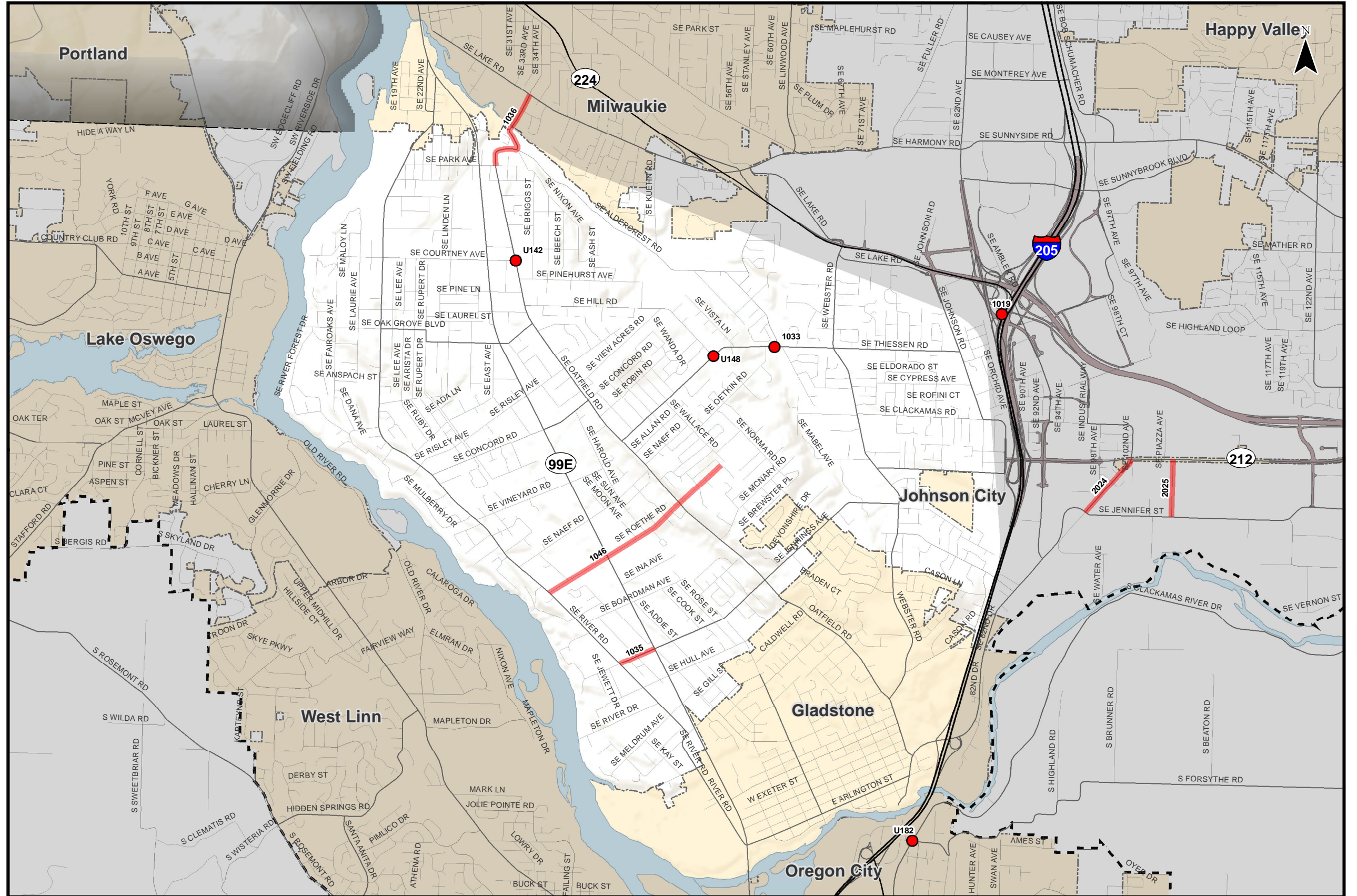


- Removed Project
- Removed Project
- Incorporated Areas
- County Boundary
- UGB

Note:
 Projects labeled U000-U999 are "Previously Planned Projects."
 Projects labeled 1000-1999 are "Public Suggested Projects."
 Projects labeled 2000-2999 are "New Identified Projects."

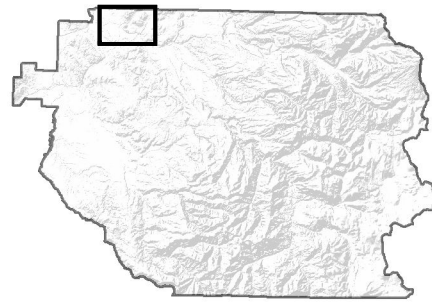
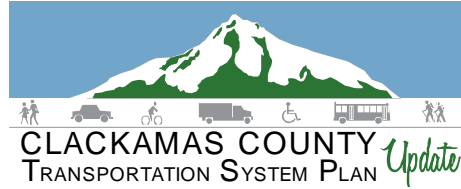
0 1 Miles

Coordinate System:
 NAD 1983 HARN StatePlane Oregon North FIPS 3601 Feet Int
 Data Source:
 Clackamas County, Metro Data Resouce Center



**Projects Recommended to be Removed from Further Consideration
 Greater McLoughlin Area**

Figure
M T

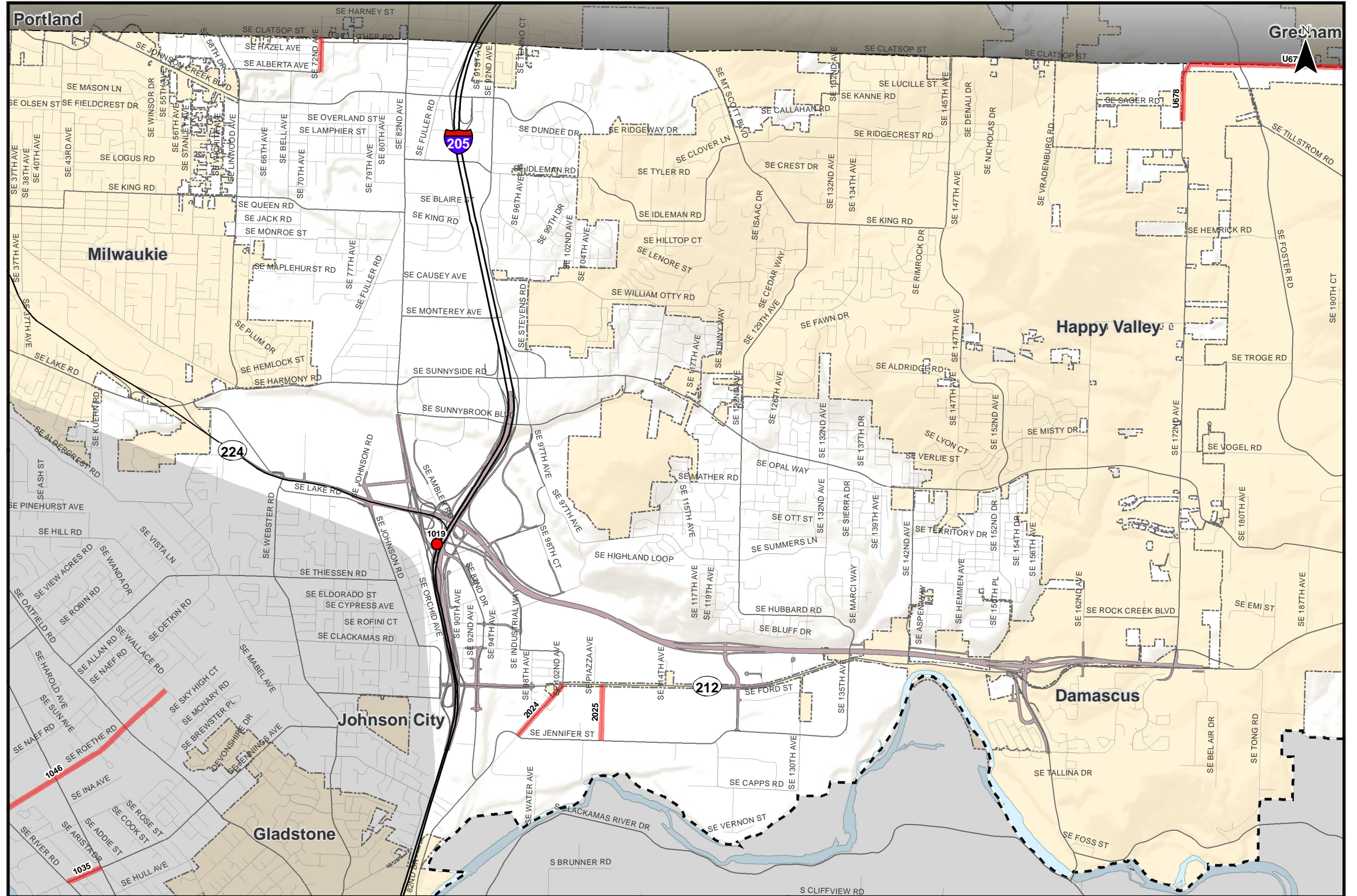


- Removed Project
- Removed Project
- Sunrise Project FEIS
- Incorporated Areas
- County Boundary
- UGB

Note:
 Projects labeled U000-U999 are
 "Previously Planned Projects."
 Projects labeled 1000-1999 are
 "Public Suggested Projects."
 Projects labeled 2000-2999 are
 "New Identified Projects."

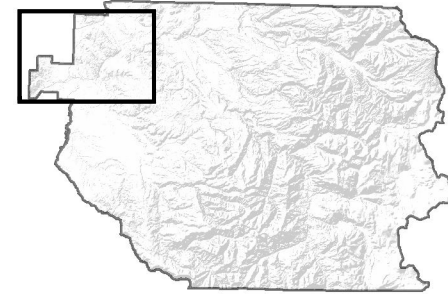
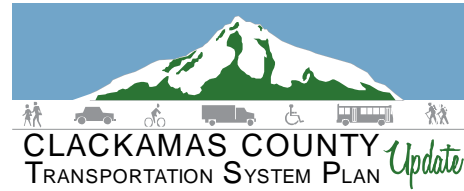
0 1
 Miles

Coordinate System:
 NAD 1983 HARN StatePlane Oregon North FIPS 3601 Feet Int
 Data Source:
 Clackamas County, Metro Data Resouce Center

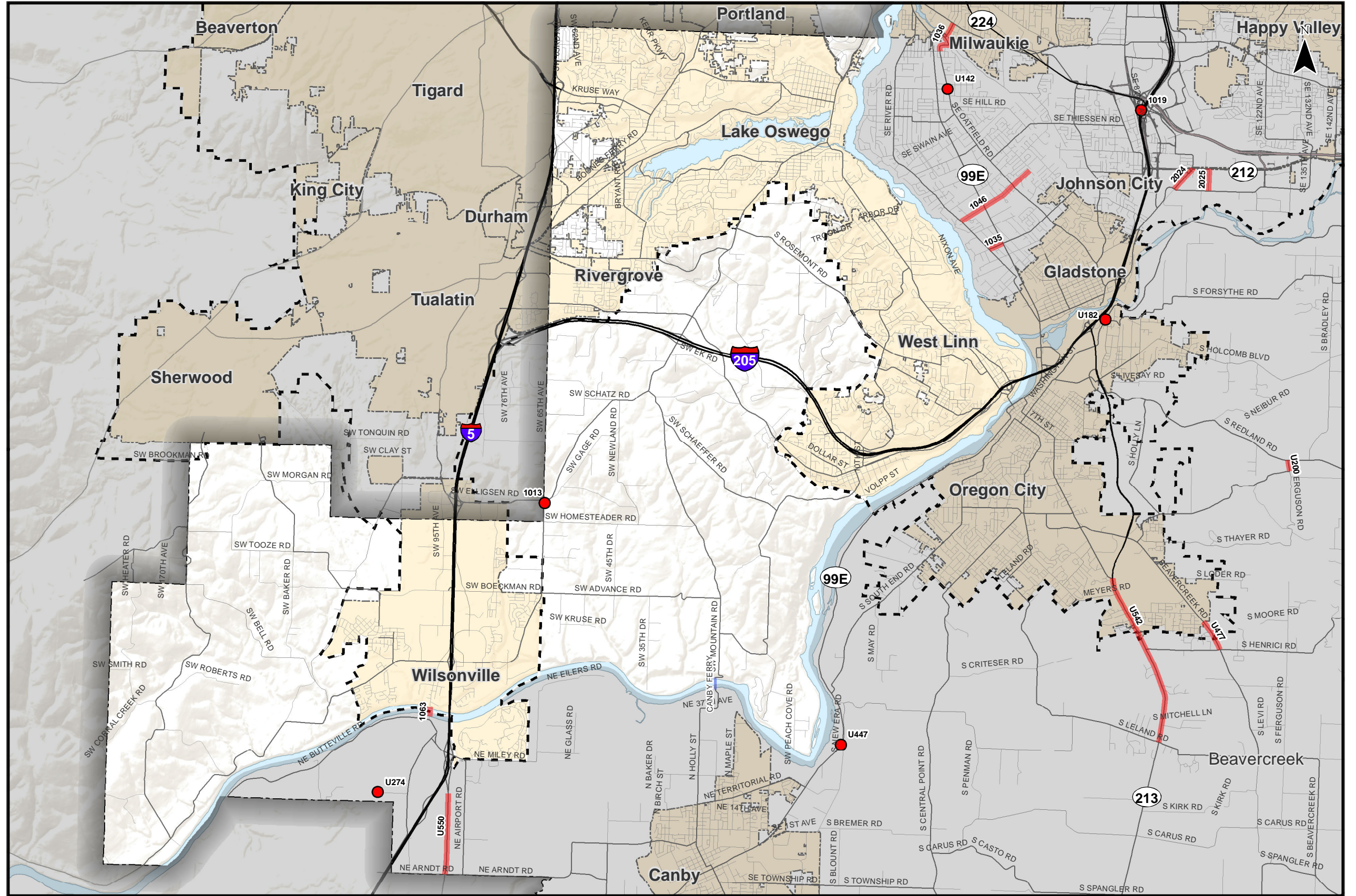


**Projects Recommended to be Removed from Further Consideration
 Greater Clackamas Regional Center / Industrial Area**

Figure
CT



- Removed Project
- Removed Project
- Incorporated Areas
- County Boundary
- UGB



Note:
 Projects labeled U000-U999 are
 "Previously Planned Projects."
 Projects labeled 1000-1999 are
 "Public Suggested Projects."
 Projects labeled 2000-2999 are
 "New Identified Projects."

0 1 2 Miles

Coordinate System:
 NAD 1983 HARN StatePlane Oregon North FIPS 3601 Feet Int
 Data Source:
 Clackamas County, Metro Data Resouce Center

Projects Recommended to be Removed from Further Consideration Northwest County

Figure
 NW T