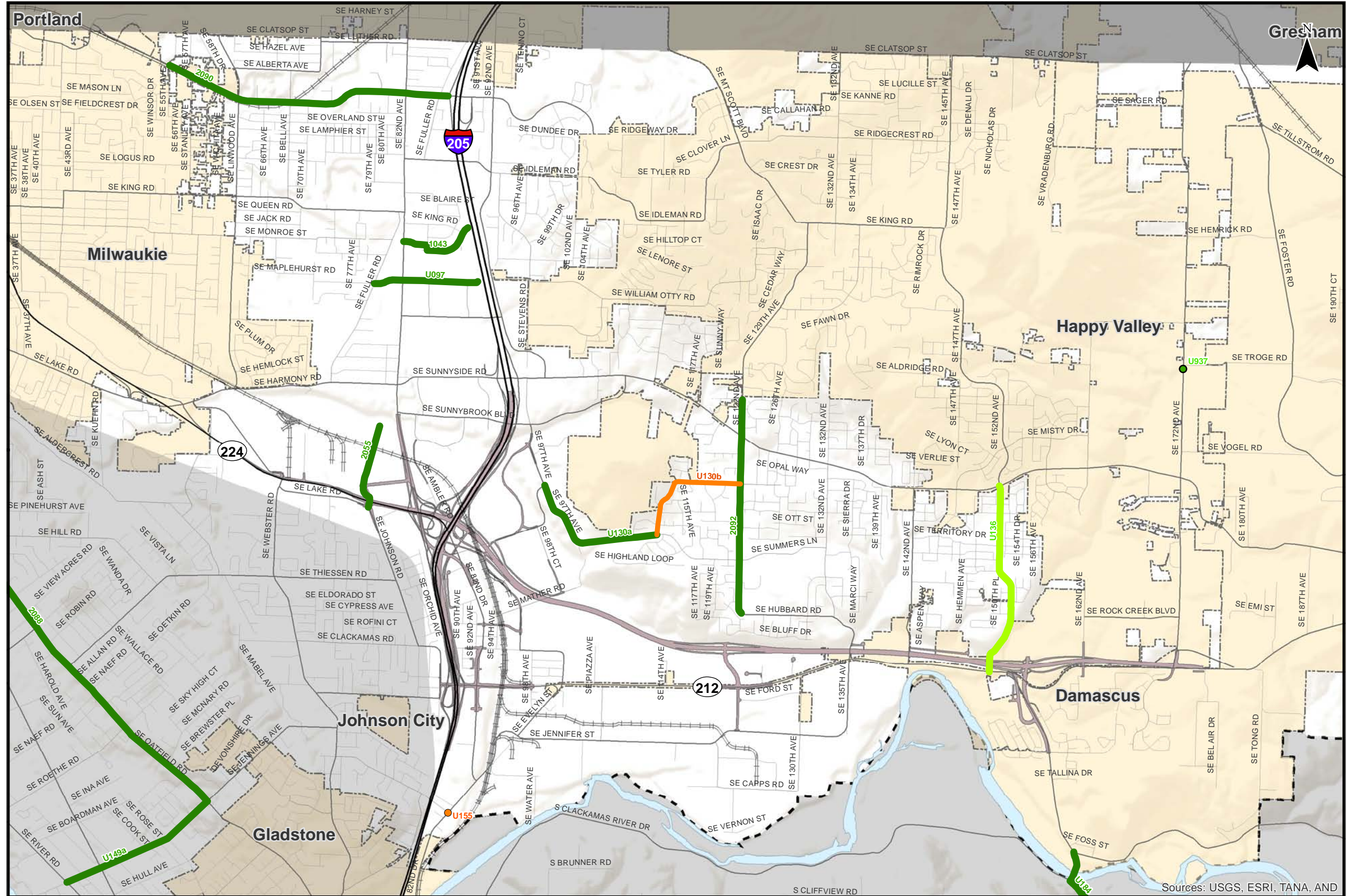


- Master List County Projects**
- █ Tier 1 Question - TAC Priority
 - █ Tier 1 Question - GAPS Priority
 - █ Tier 2 Question - TAC Priority
 - █ Tier 2 Question - GAPS Priority
 - Multi-Use Path
 - Incorporated Areas
 - County Boundary
 - UGB



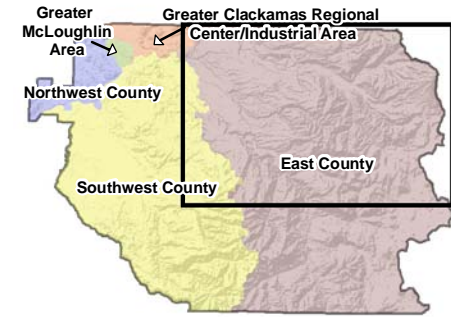
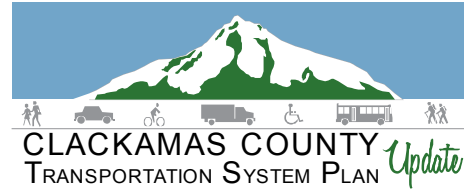
0 1 Miles

Coordinate System:
NAD 1983 HARN StatePlane Oregon North FIPS 3601 Feet Intl
Data Source:
Clackamas County, Metro Data Resouce Center

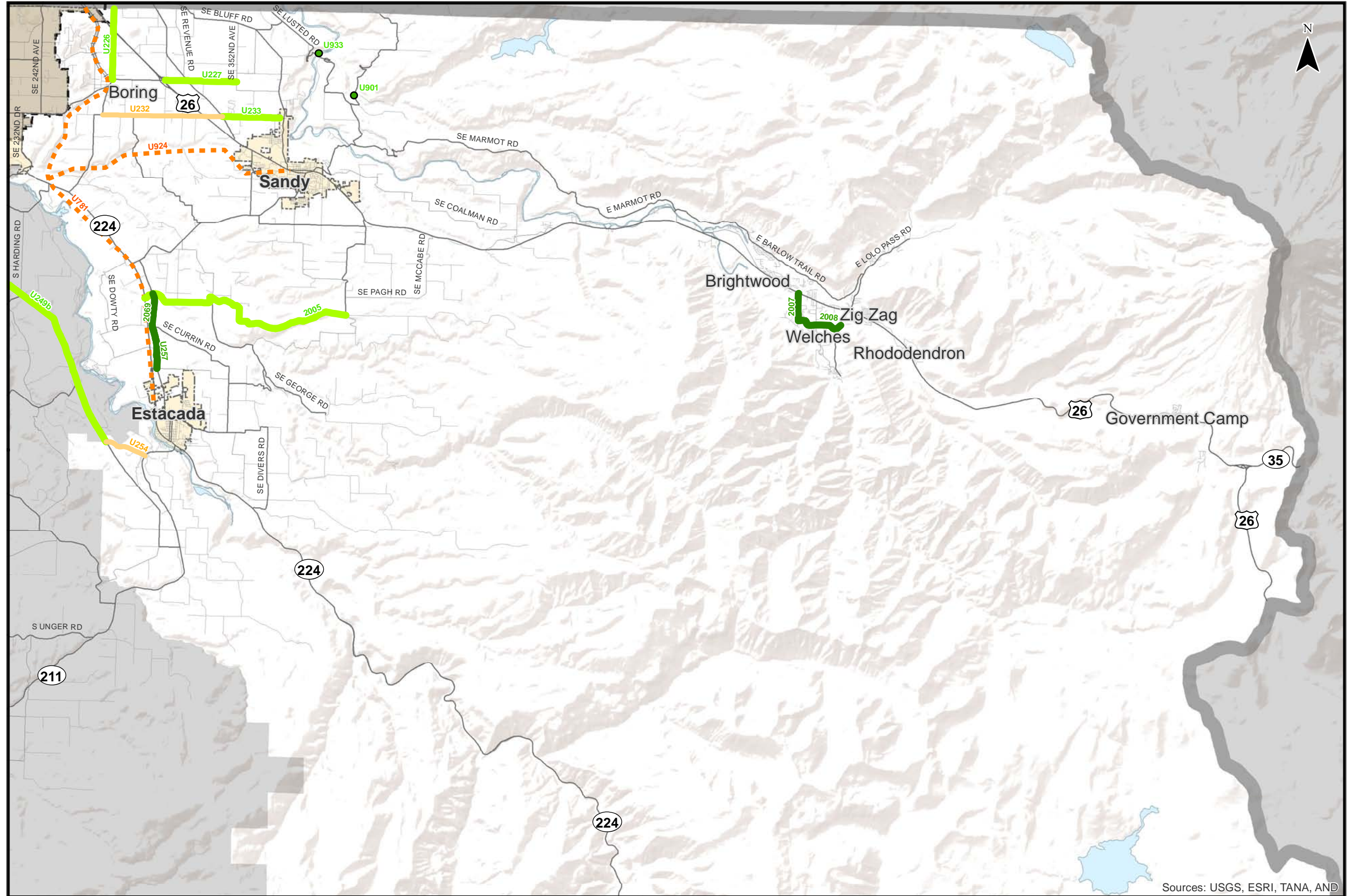
**Master List Projects with Remaining Questions
Greater Clackamas Regional Center / Industrial Area**

Figure
CC

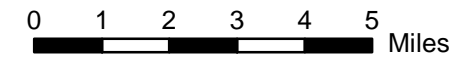
H:\profile\11732 - Clackamas County TSP\Task_12_Prioritization\Master List\April 2013 Master Projects_RemainQs.mxd



- Master List County Projects**
- █ Tier 1 Question - TAC Priority
 - █ Tier 1 Question - GAPS Priority
 - █ Tier 2 Question - TAC Priority
 - █ Tier 2 Question - GAPS Priority
 - Multi-Use Path
 - Incorporated Areas
 - County Boundary
 - UGB



Sources: USGS, ESRI, TANA, AND



Coordinate System:
NAD 1983 HARN StatePlane Oregon North FIPS 3601 Feet Int
Data Source:
Clackamas County, Metro Data Resouce Center

**Master List Projects with Remaining Questions
East County - Northern Portion**

Figure
EN C

H:\profile11732 - Clackamas County TSP\Task_12_Prioritization\Master List\April 2013 Master Projects_RemainQs.mxd

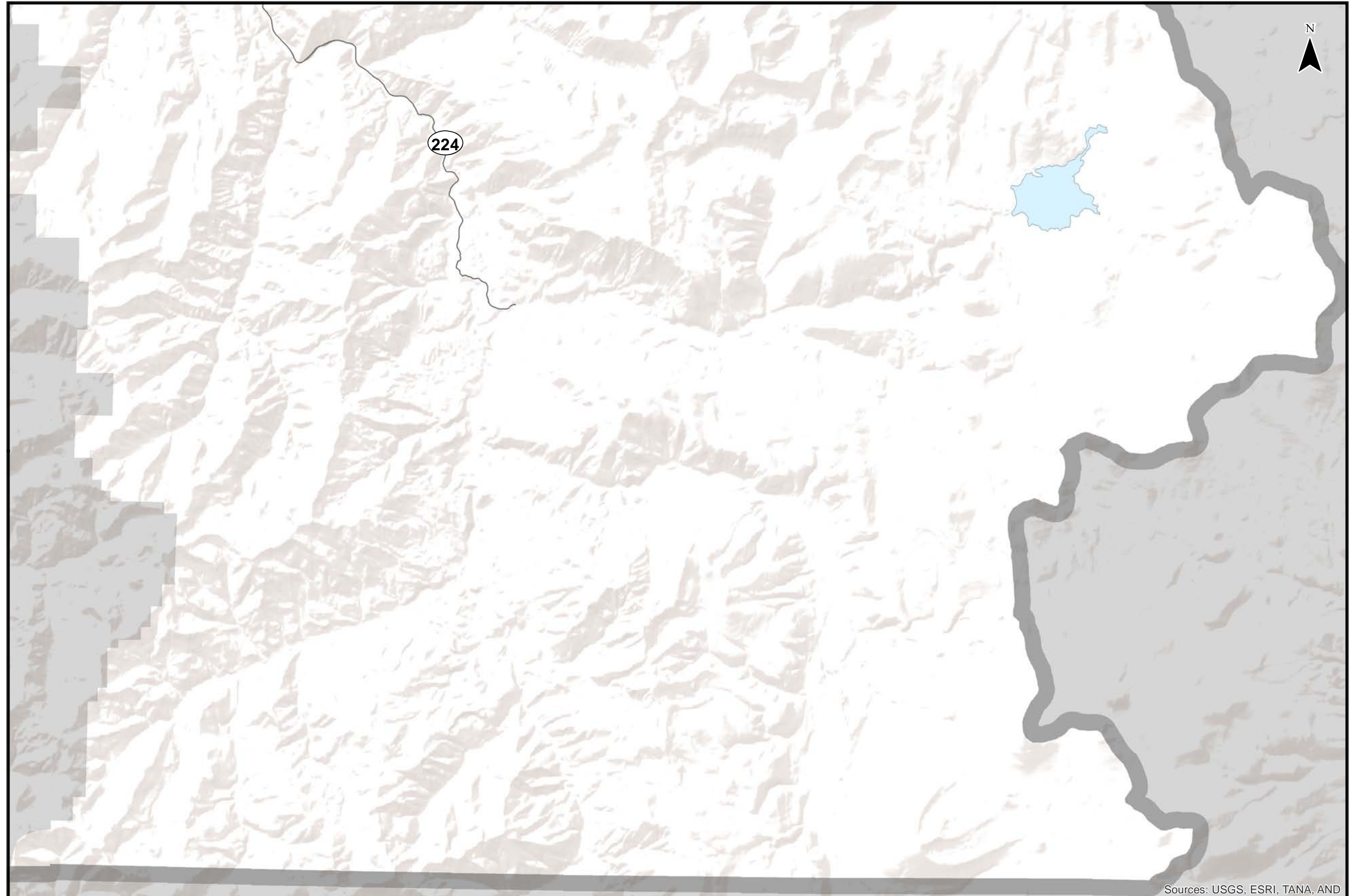


CLACKAMAS COUNTY TRANSPORTATION SYSTEM PLAN *Update*

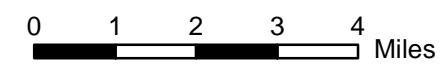


Master List County Projects

- █ Tier 1 Question - TAC Priority
- █ Tier 1 Question - GAPS Priority
- █ Tier 2 Question - TAC Priority
- █ Tier 2 Question - GAPS Priority
- Multi-Use Path
- Incorporated Areas
- County Boundary
- UGB



Sources: USGS, ESRI, TANA, AND

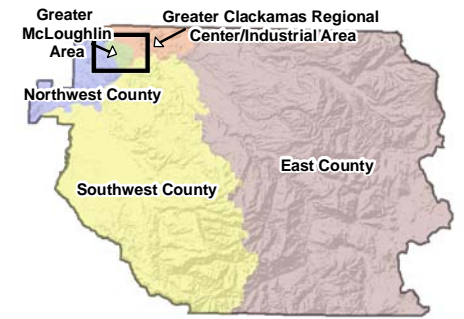
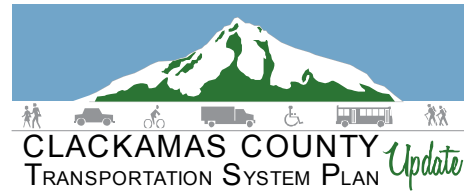


Coordinate System:
NAD 1983 HARN StatePlane Oregon North FIPS 3601 Feet Intl
Data Source:
Clackamas County, Metro Data Resouce Center

Master List Projects with Remaining Questions East County - Southern Portion

Figure
ES C

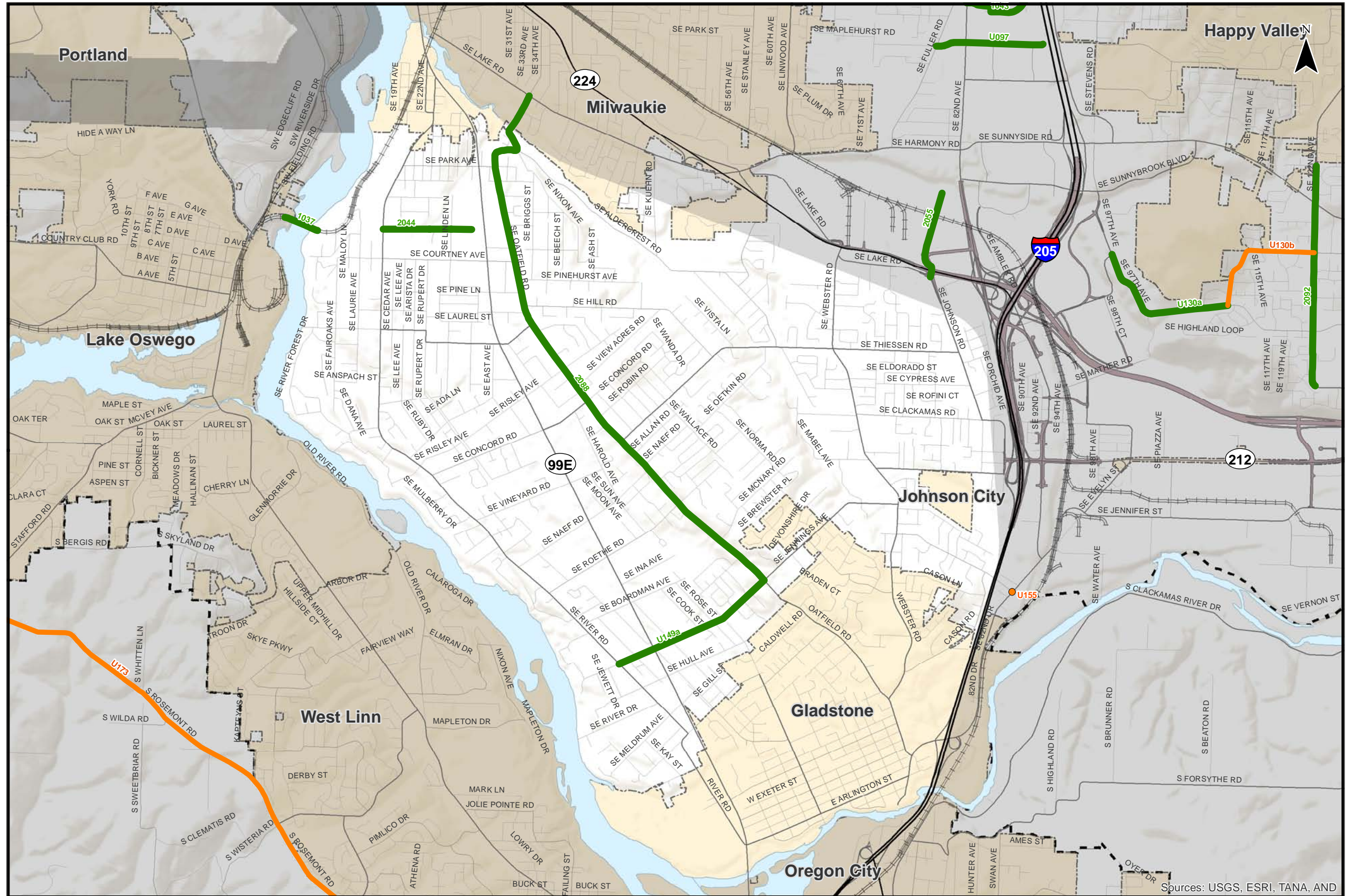
H:\profile11732 - Clackamas County TSP\Task_12_Prioritization\Master_List\April 2013 Master Projects_RemainOs.mxd



Master List County Projects

- █ Tier 1 Question - TAC Priority
- █ Tier 1 Question - GAPS Priority
- █ Tier 2 Question - TAC Priority
- █ Tier 2 Question - GAPS Priority

- Multi-Use Path
- Incorporated Areas
- County Boundary
- UGB



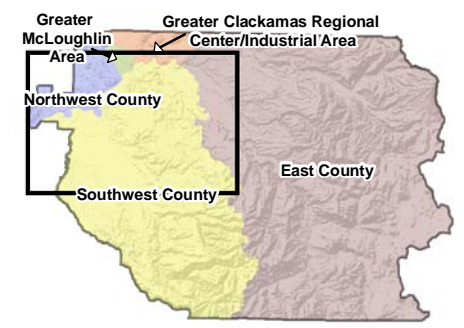
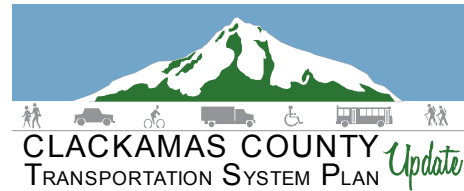
Coordinate System:
NAD 1983 HARN StatePlane Oregon North FIPS 3601 Feet Intl
Data Source:
Clackamas County, Metro Data Resouce Center

**Master List Projects with Remaining Questions
Greater McLoughlin Area**

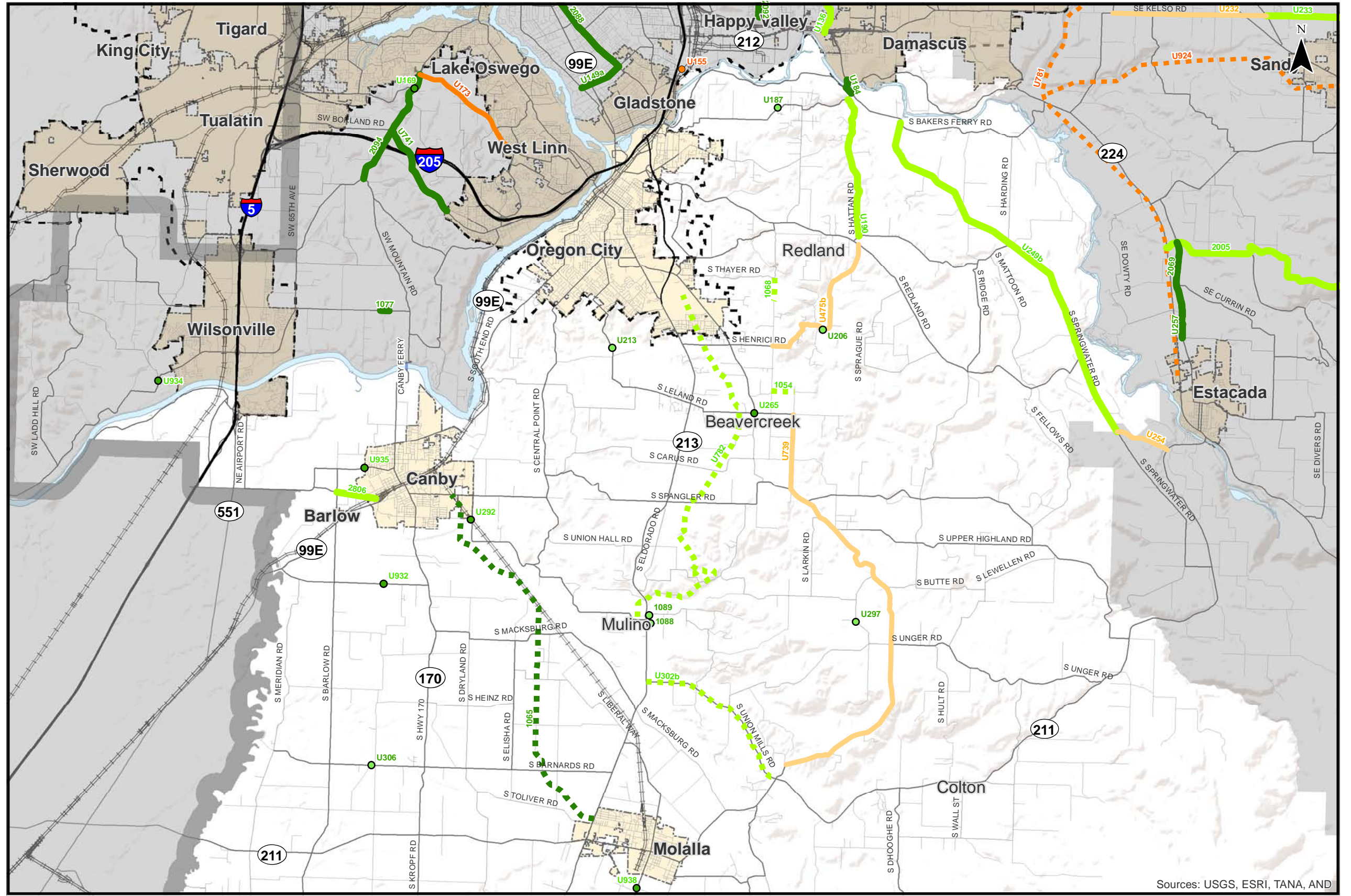
Figure
MC

Sources: USGS, ESRI, TANA, AND

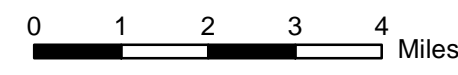
H:\profile11732 - Clackamas County TSP\Task_12_Prioritization\Master List\April 2013 Master Projects_RemainQs.mxd



- Master List County Projects**
- Tier 1 Question - TAC Priority
 - Tier 1 Question - GAPS Priority
 - Tier 2 Question - TAC Priority
 - Tier 2 Question - GAPS Priority
 - Multi-Use Path
 - Incorporated Areas
 - County Boundary
 - UGB



Sources: USGS, ESRI, TANA, AND



Coordinate System:
NAD 1983 HARN StatePlane Oregon North FIPS 3601 Feet Intl
Data Source:
Clackamas County, Metro Data Resouce Center

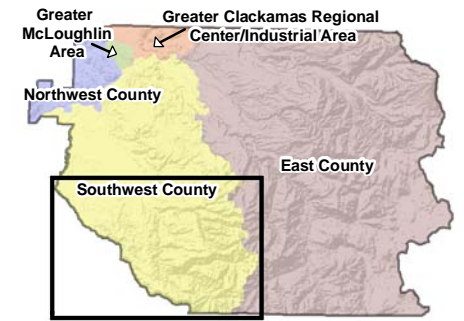
**Master List Projects with Remaining Questions
Southwest County - Northern Portion**

Figure
SN C

H:\profile11732 - Clackamas County TSP\Task_12_Prioritization\Master List\April 2013 Master Projects_RemainQs.mxd

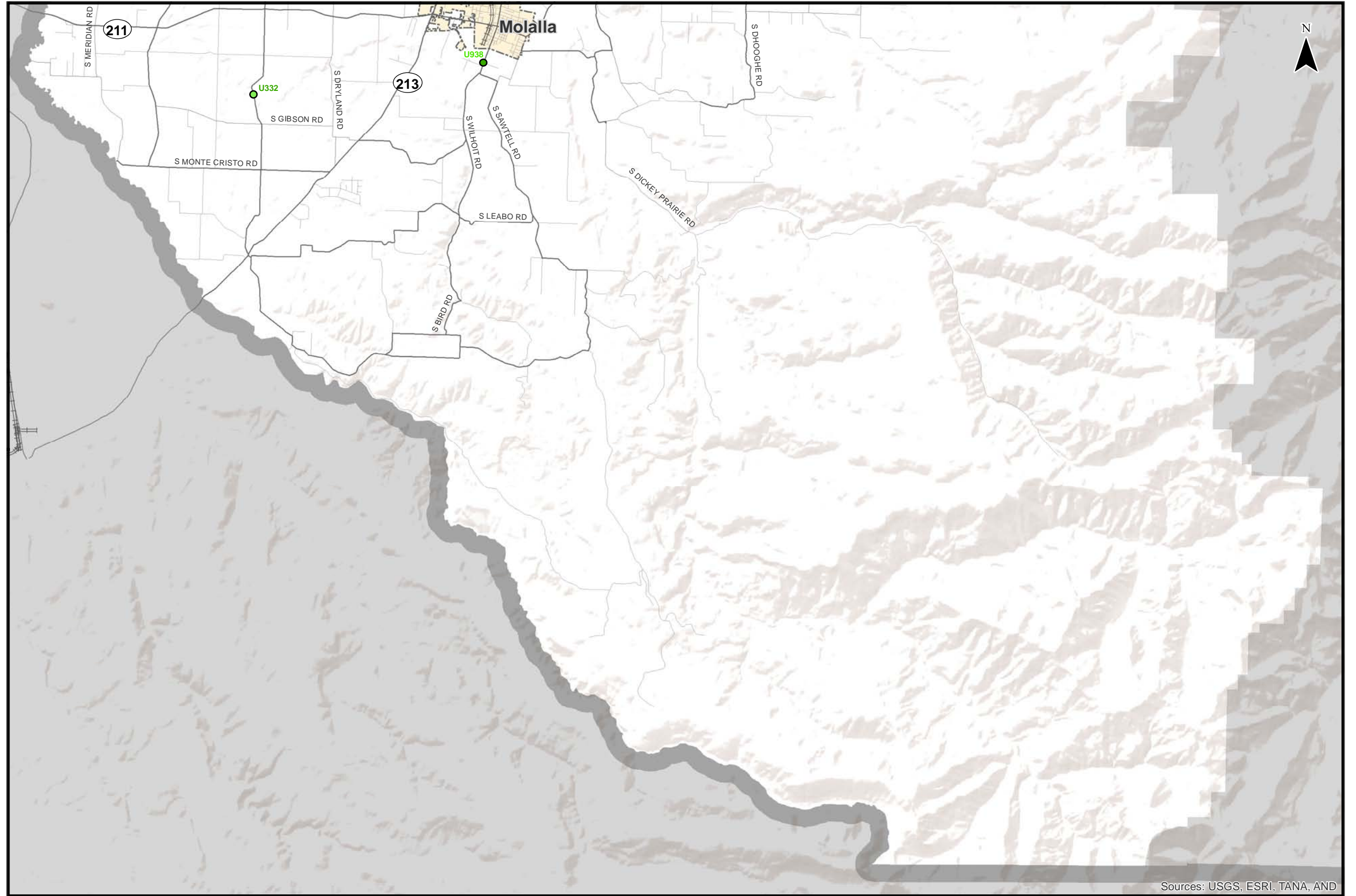


CLACKAMAS COUNTY TRANSPORTATION SYSTEM PLAN *Update*

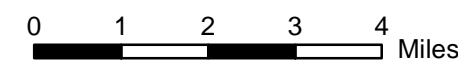


Master List County Projects

- Tier 1 Question - TAC Priority
- Tier 1 Question - GAPS Priority
- Tier 2 Question - TAC Priority
- Tier 2 Question - GAPS Priority
- Multi-Use Path
- Incorporated Areas
- County Boundary
- UGB



Sources: USGS, ESRI, TANA, AND



Coordinate System:
 NAD 1983 HARN StatePlane Oregon North FIPS 3601 Feet Intl
 Data Source:
 Clackamas County, Metro Data Resouce Center

Master List Projects with Remaining Questions Southwest County - Southern Portion

Figure
SS C

H:\profile11732 - Clackamas County TSP\Task_12_Prioritization\Master_List\April 2013 Master Projects_RemainOs.mxd