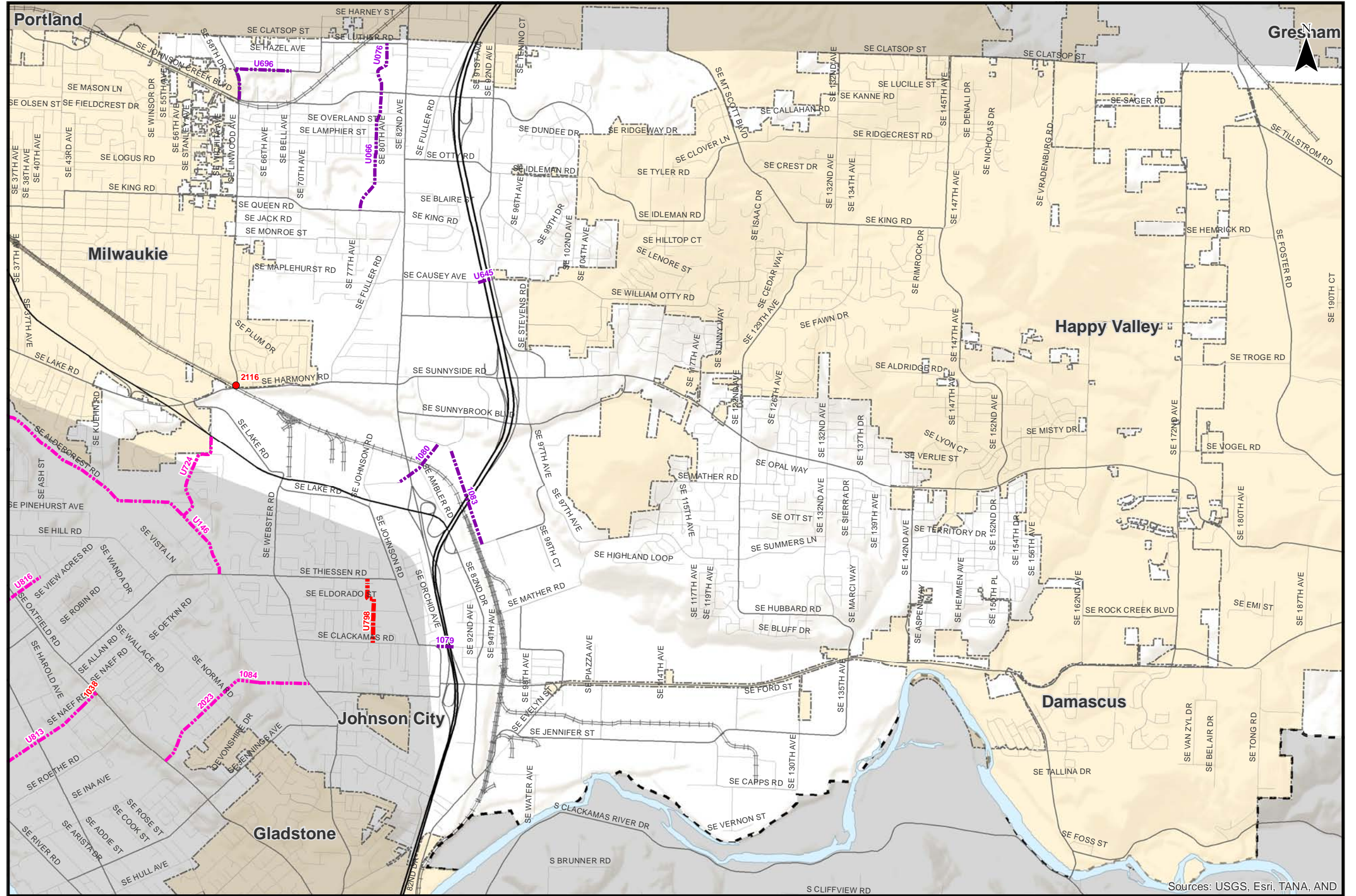


Master List County Projects

- - - - Recommended for Removal - GAPS and TAC
- - - - Recommended for Removal - TAC
- - - - Recommended for Removal - GAPS
- - - - Multi-Use Path
- Incorporated Areas
- County Boundary
- UGB



Sources: USGS, Esri, TANA, AND

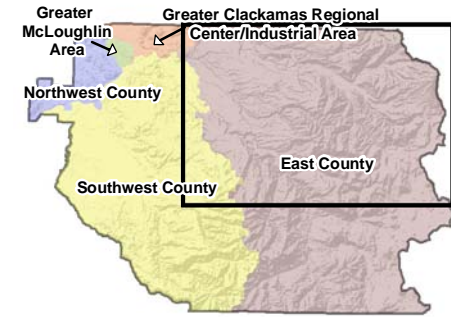
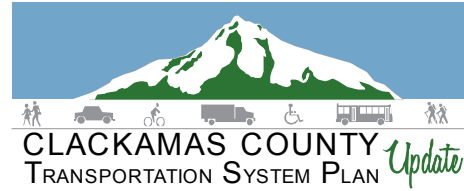


Coordinate System:
NAD 1983 HARN StatePlane Oregon North FIPS 3601 Feet Int
Data Source:
Clackamas County, Metro Data Resouce Center

**Master List Projects Recommended for Removal
Greater Clackamas Regional Center / Industrial Area**

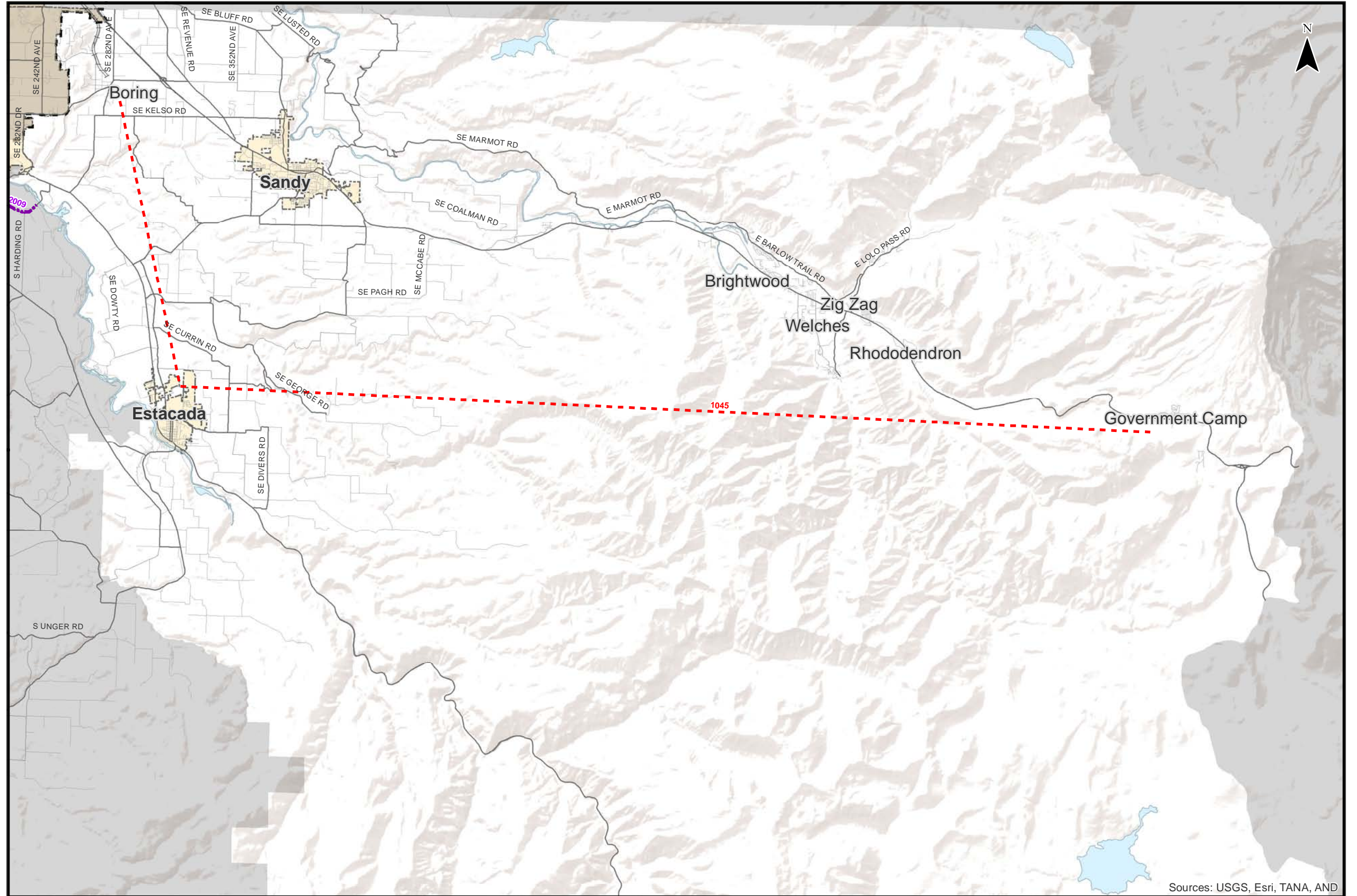
Figure
C D

H:\PROJ\FILE11732 - Clackamas County TSP\Task_12_Prioritization\Master List\April 2013 Master Projects_Removeal.mxd



Master List County Projects

- - - - Recommended for Removal - GAPS and TAC
- - - - Recommended for Removal - TAC
- - - - Recommended for Removal - GAPS
- Multi-Use Path
- Incorporated Areas
- County Boundary
- UGB



Sources: USGS, Esri, TANA, AND

**Master List Projects Recommended for Removal
East County - Northern Portion**

Figure
EN D

Coordinate System:
NAD 1983 HARN StatePlane Oregon North FIPS 3601 Feet Int
Data Source:
Clackamas County, Metro Data Resouce Center

H:\PROJ\FILE11732 - Clackamas County TSP\Task_12_Prioritization\Master List\April 2013 Master Projects_Removeal.mxd



CLACKAMAS COUNTY TRANSPORTATION SYSTEM PLAN *Update*

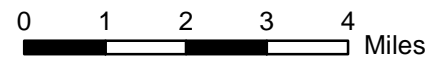


Master List County Projects

- - - - Recommended for Removal - GAPS and TAC
- - - - Recommended for Removal - TAC
- - - - Recommended for Removal - GAPS
- ■ ■ ■ Multi-Use Path
- Incorporated Areas
- County Boundary
- UGB



Sources: USGS, Esri, TANA, AND

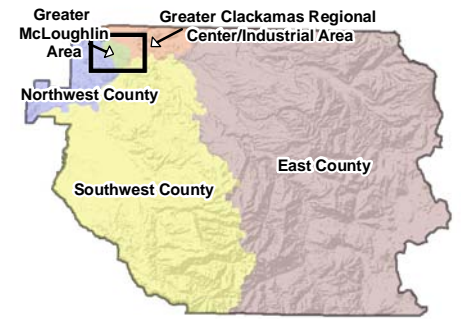
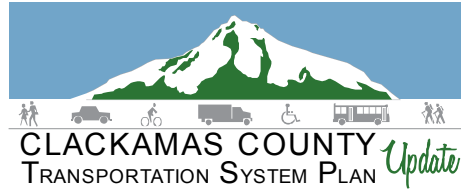


Coordinate System:
NAD 1983 HARN StatePlane Oregon North FIPS 3601 Feet Int
Data Source:
Clackamas County, Metro Data Resouce Center

Master List Projects Recommended for Removal East County - Southern Portion

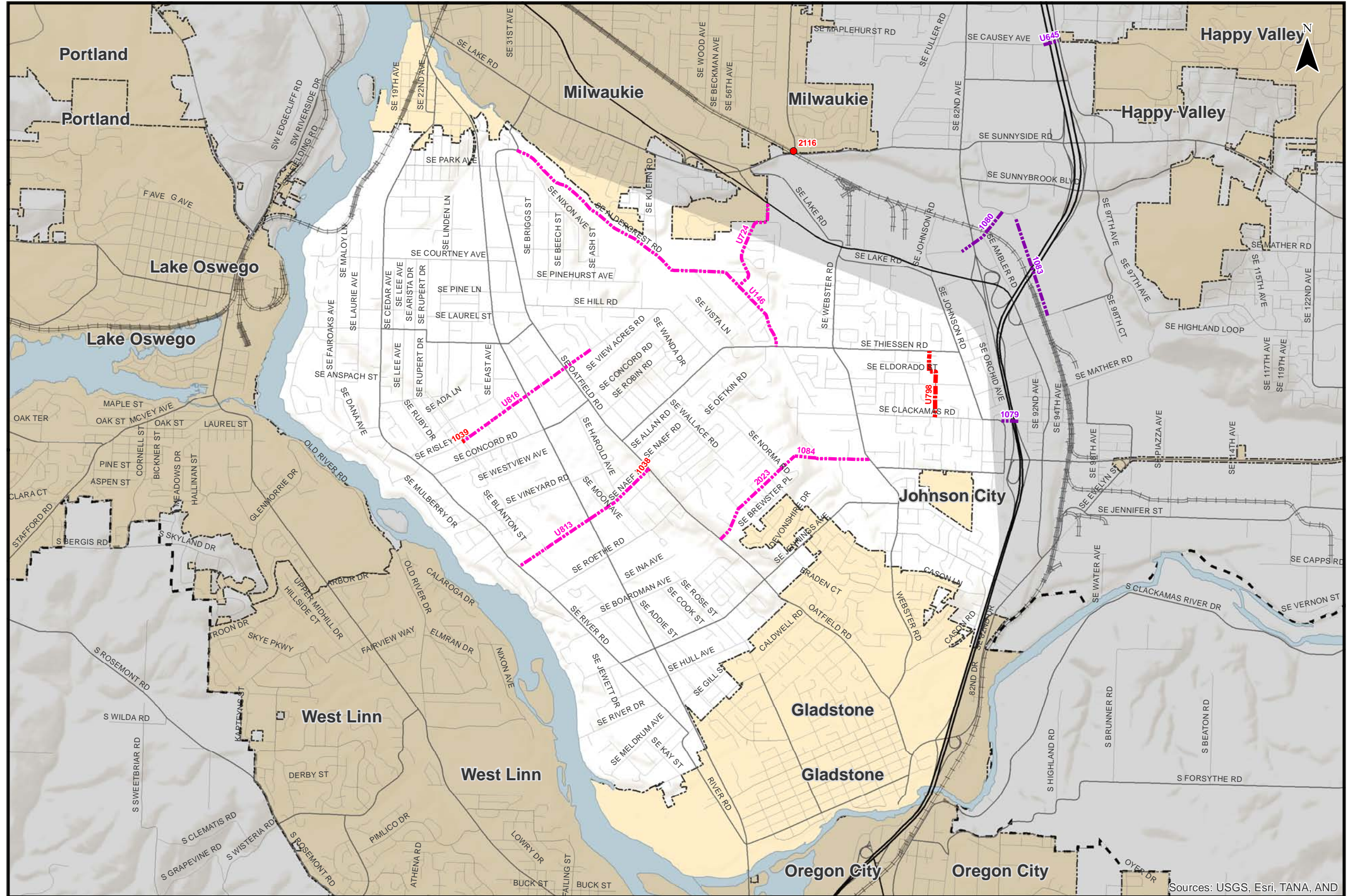
Figure
ES D

H:\PROJ\FILE11732 - Clackamas County TSP\Task_12_Prioritization\Master List\April 2013 Master Projects_Removeal.mxd



Master List County Projects

- — — Recommended for Removal - GAPS and TAC
- — — Recommended for Removal - TAC
- — — Recommended for Removal - GAPS
- Multi-Use Path
- Incorporated Areas
- County Boundary
- UGB



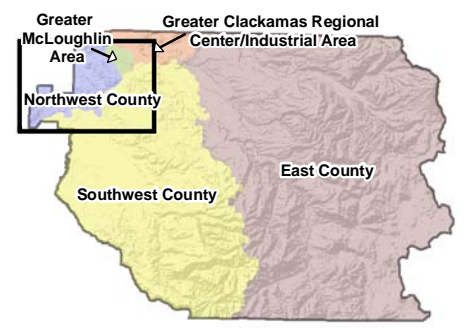
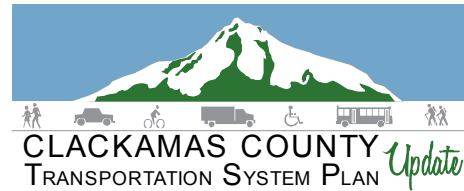
Coordinate System:
NAD 1983 HARN StatePlane Oregon North FIPS 3601 Feet Int
Data Source:
Clackamas County, Metro Data Resouce Center

**Master List Projects Recommended for Removal
Greater McLoughlin Area**

Figure
MD

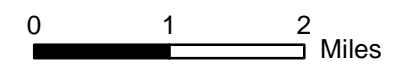
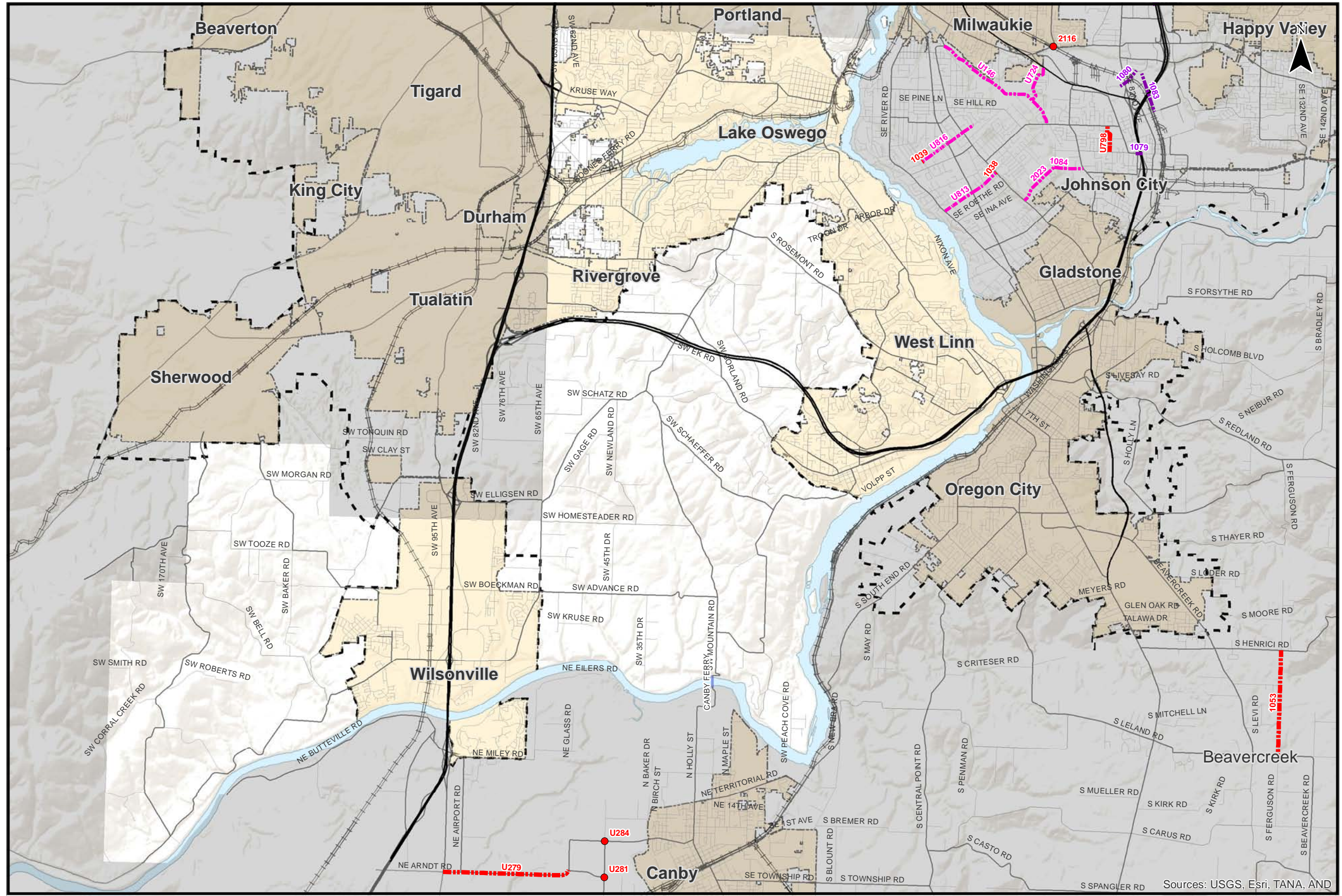
Sources: USGS, Esri, TANA, AND

H:\PROJECTS\1732 - Clackamas County TSP\Task_12_Prioritization\Master List\April 2013 Master Projects_Removal.mxd



Master List County Projects

- - - - Recommended for Removal - GAPS and TAC
- - - - Recommended for Removal - TAC
- - - - Recommended for Removal - GAPS
- Multi-Use Path
- Incorporated Areas
- County Boundary
- UGB



Coordinate System: NAD 1983 HARN StatePlane Oregon North FIPS 3601 Feet Int Data Source: Clackamas County, Metro Data Resouce Center

Master List Projects Recommended for Removal Northwest County

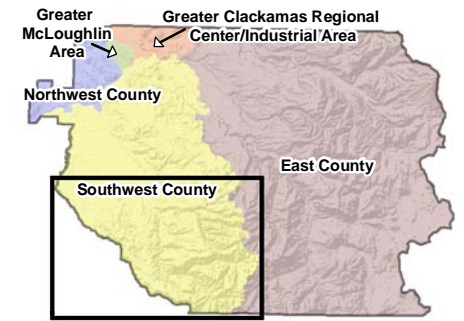
Figure NW D

H:\PROJ\FILE11732 - Clackamas County TSP\Task_12_Prioritization\Master List\April 2013 Master Projects_Removeal.mxd

Sources: USGS, Esri, TANA, AND

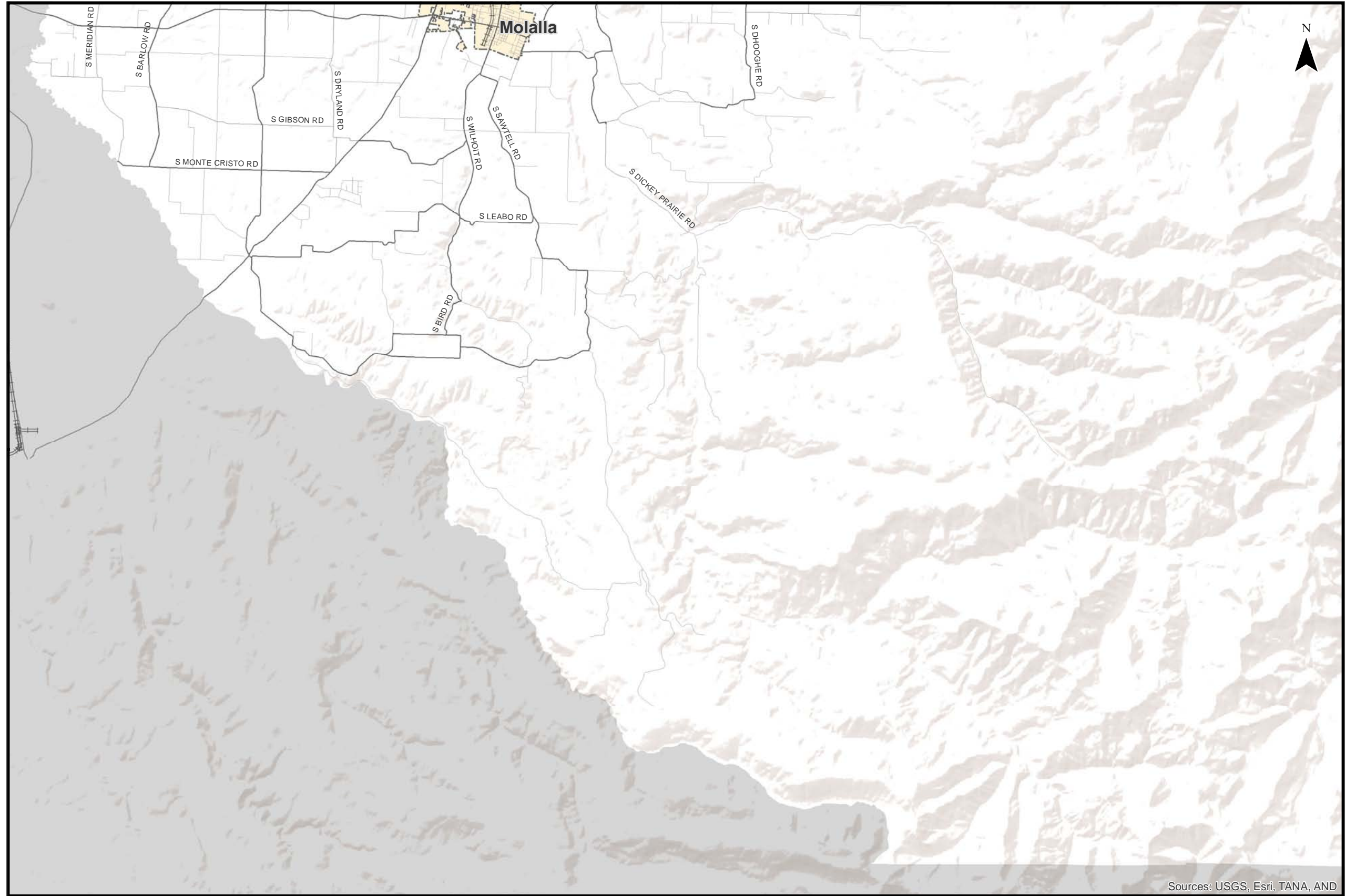


CLACKAMAS COUNTY TRANSPORTATION SYSTEM PLAN *Update*

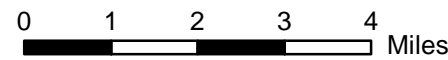


Master List County Projects

- - - - Recommended for Removal - GAPS and TAC
- - - - Recommended for Removal - TAC
- - - - Recommended for Removal - GAPS
- ■ ■ ■ Multi-Use Path
- Incorporated Areas
- County Boundary
- UGB



Sources: USGS, Esri, TANA, AND



Coordinate System:
NAD 1983 HARN StatePlane Oregon North FIPS 3601 Feet Int
Data Source:
Clackamas County, Metro Data Resouce Center

Master List Projects Recommended for Removal Southwest County - Southern Portion

Figure
SS D