

Welcome to the OR 66 Green Springs Highway Interchange Access Management Plan Public Visioning Workshop



We are very glad that you took the time to learn more about the project and hope you will provide us with your thoughts and feedback.

This packet provides you with some general information about the project and provides you with tools so you to tell us what you think the future interchange and surrounding areas should look like.

Inside, you will find:

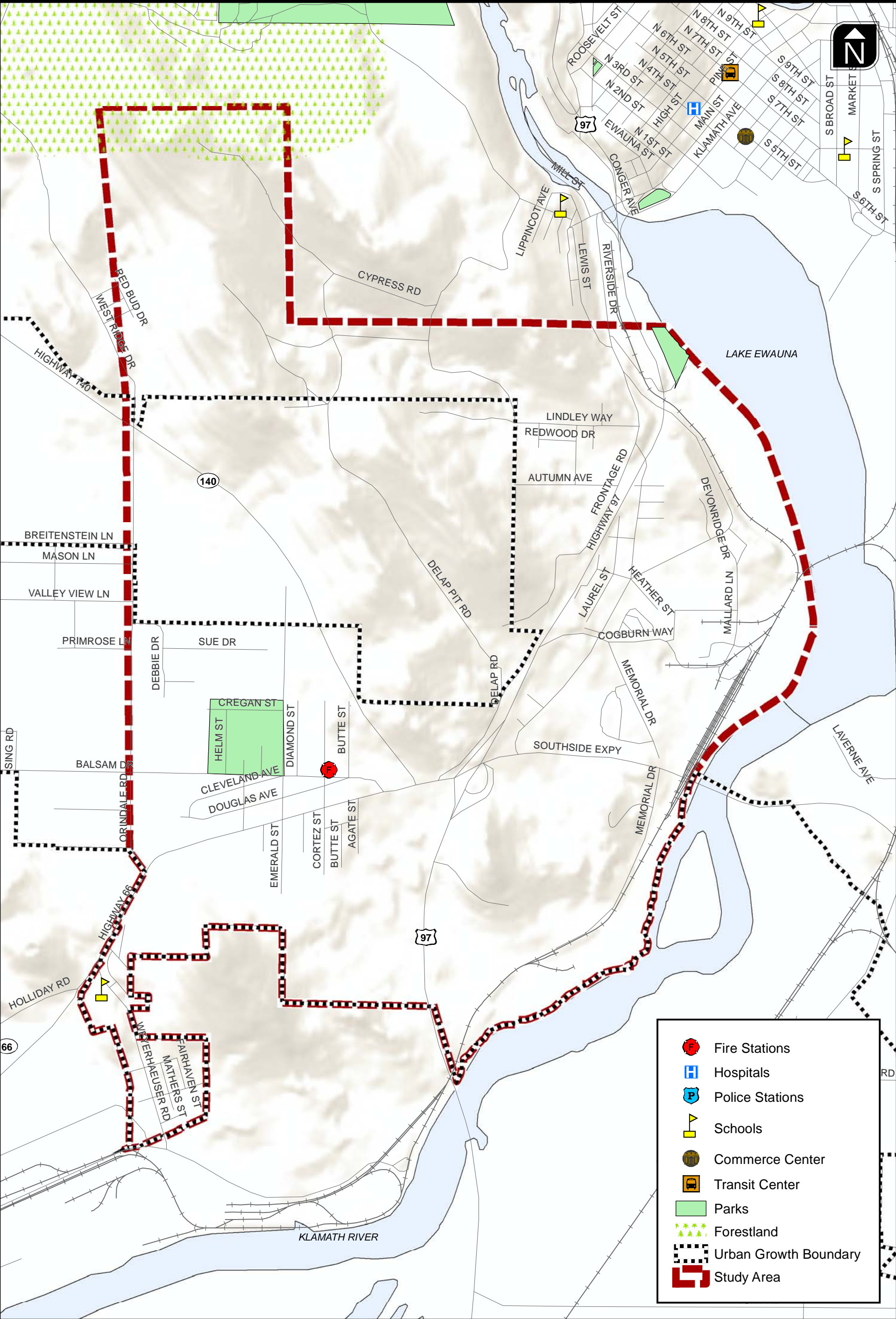
Background Information


- Figure 1:** **Activity Centers** - Shows the location of parks, public offices, schools, and other points of interest in the area
- Figure 2:** **Zoning Designations** - Shows the zoning designations of parcels near the interchange
- Figure 3:** **Functional Classifications** - Shows the functional classification of area roadways
- Figure 4:** **Study Intersections** - These are the locations we will be studying as part of the IAMP process
- Figure 5:** **Existing Conditions** - Shows the current (2010) operation conditions of the study intersections
- Figure 6:** **Future Conditions** - Shows the forecasted (2035) operating conditions of the study intersections


Providing Your Comments


- Project Area Map:** This map shows terrain and physical landmarks in the vicinity of the interchange that will be a factor when designing a new interchange configuration
- Commenting Map:** Here we want you to draw what you think a new interchange and area roadway connections should look like. Please make note of other areas you think we should focus on or concerns you have
- Comment Sheet:** Please use this sheet to provide any comments you have for us. Tell us what you like about the project, what your concerns are, or anything else that is on your mind


**Keep Informed at
www.GreenSpringsIAMP.com**





**Fire Stations**

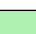
**Hospitals**


**Police Stations**


**Schools**


**Commerce Center**

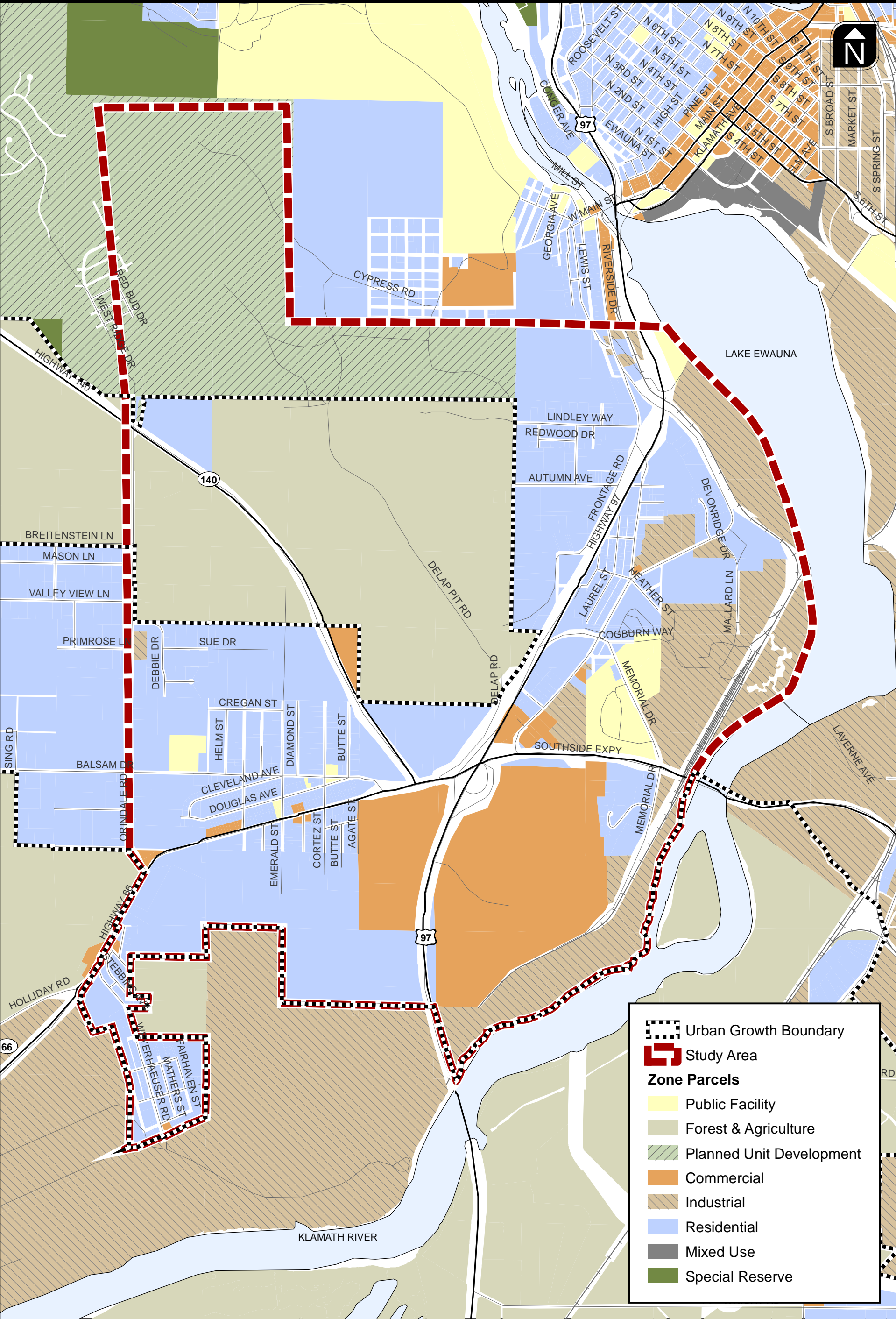
**Transit Center**

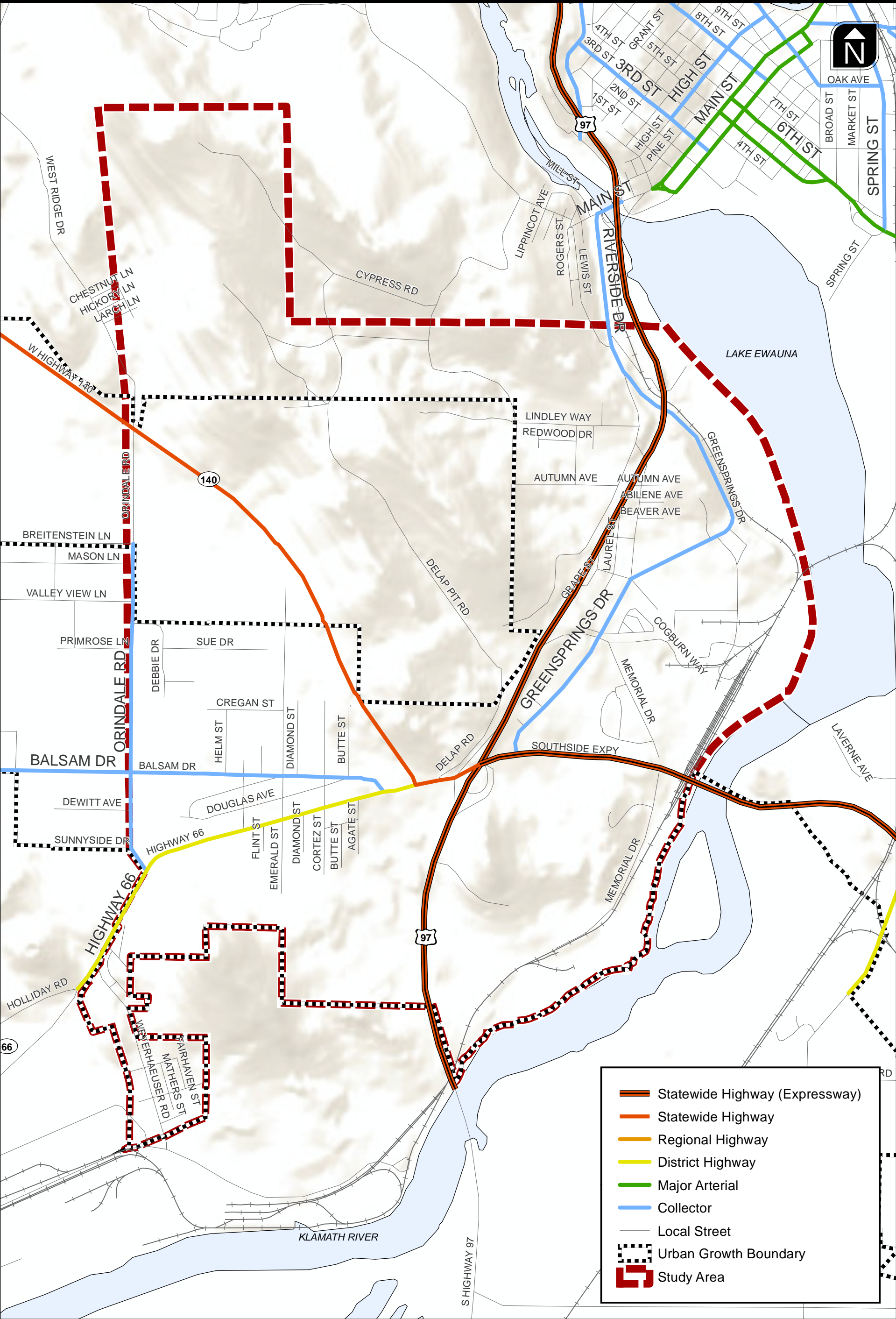
**Parks**

**Forestland**

**Urban Growth Boundary**

**Study Area**



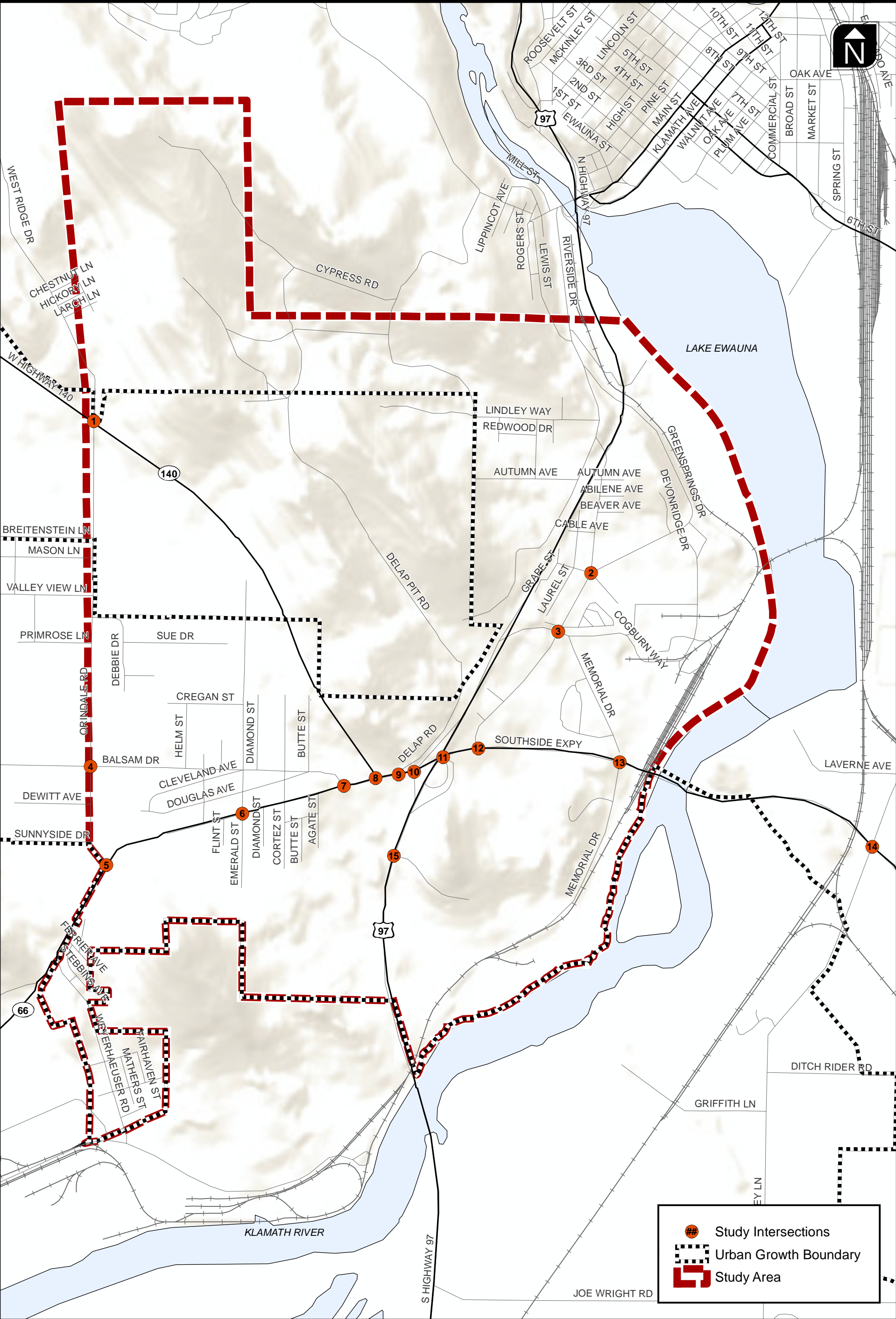



H:\profile\11881 - Greensprings IAMP\gis\Fig03_Functional Classification Map.mxdBasemap





Functional Classification Map

Figure 3



 Study Intersections

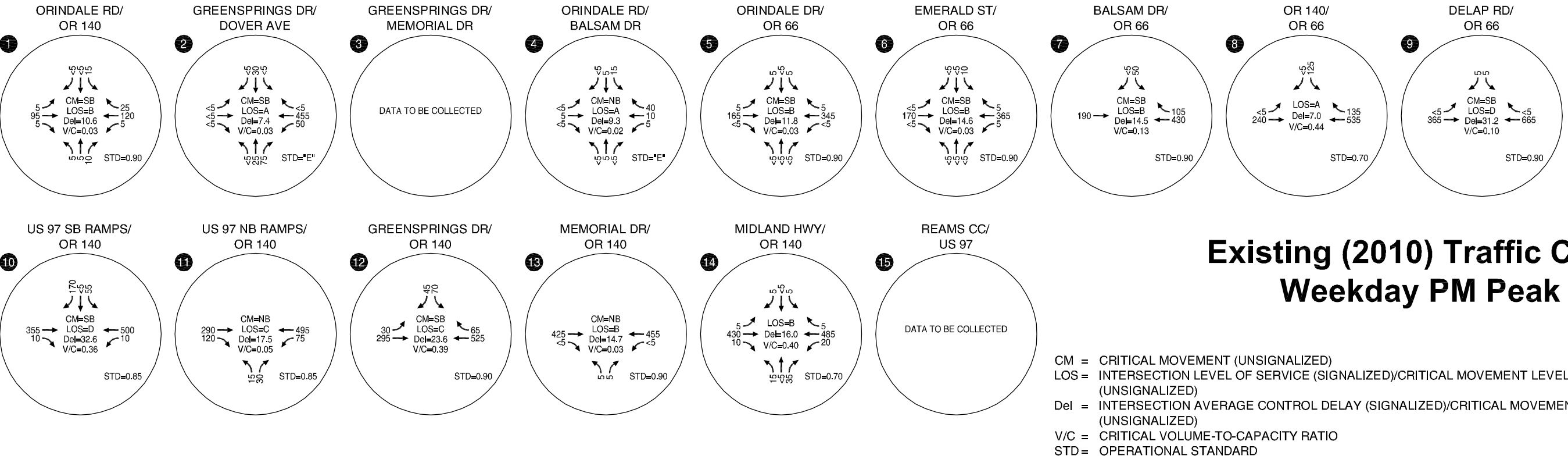
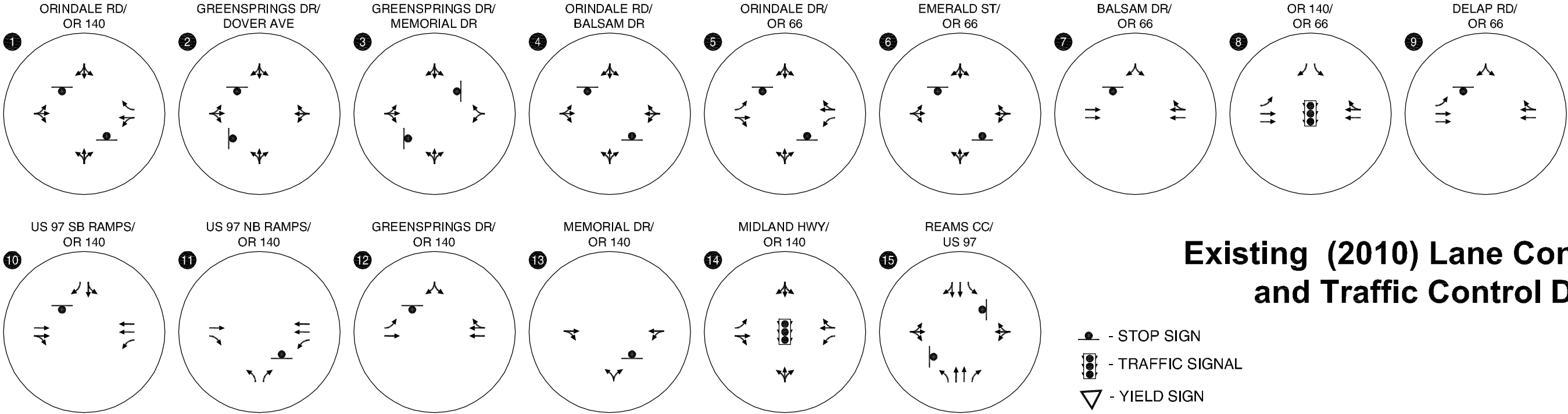
 Urban Growth Boundary

 Study Area



Study Intersections

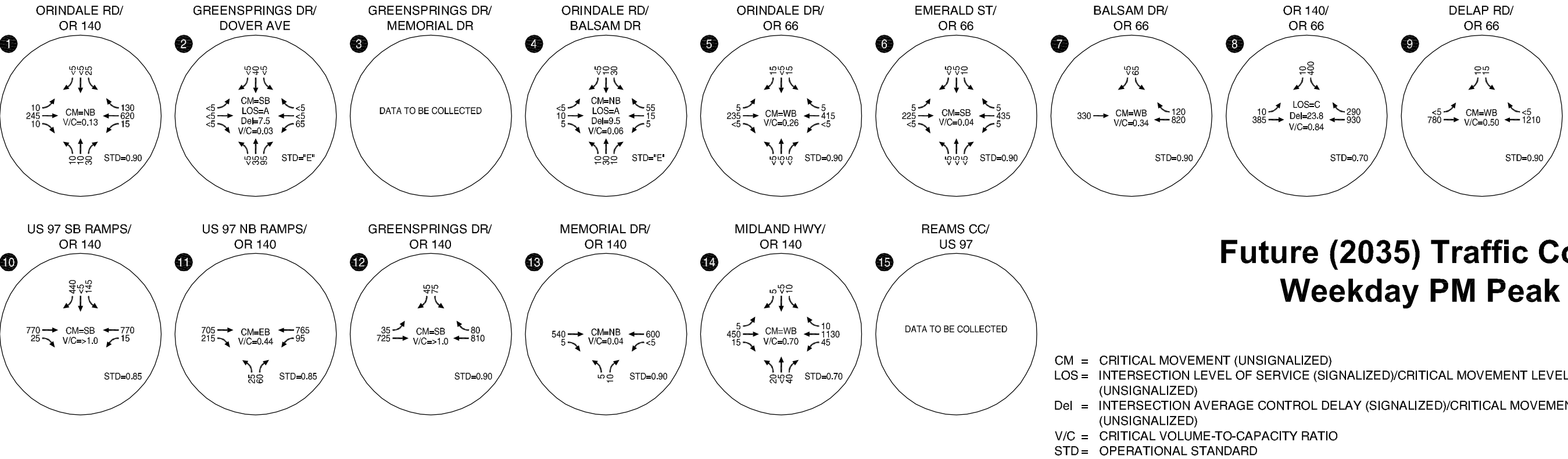
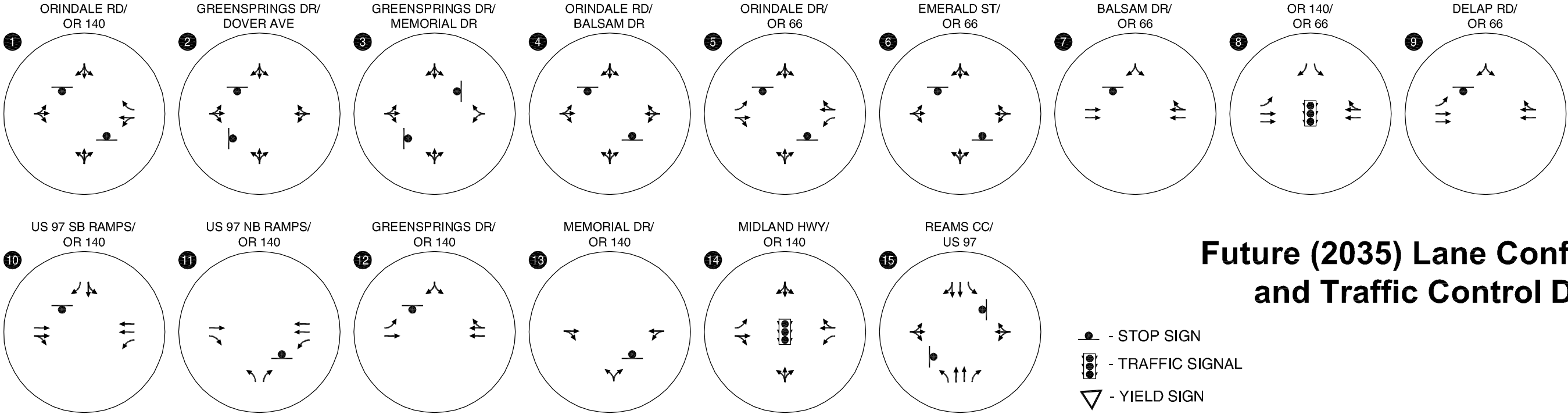
Figure 4



Existing (2010) Lane Configurations and Traffic Control Devices

Existing (2010) Traffic Conditions Weekday PM Peak Hour

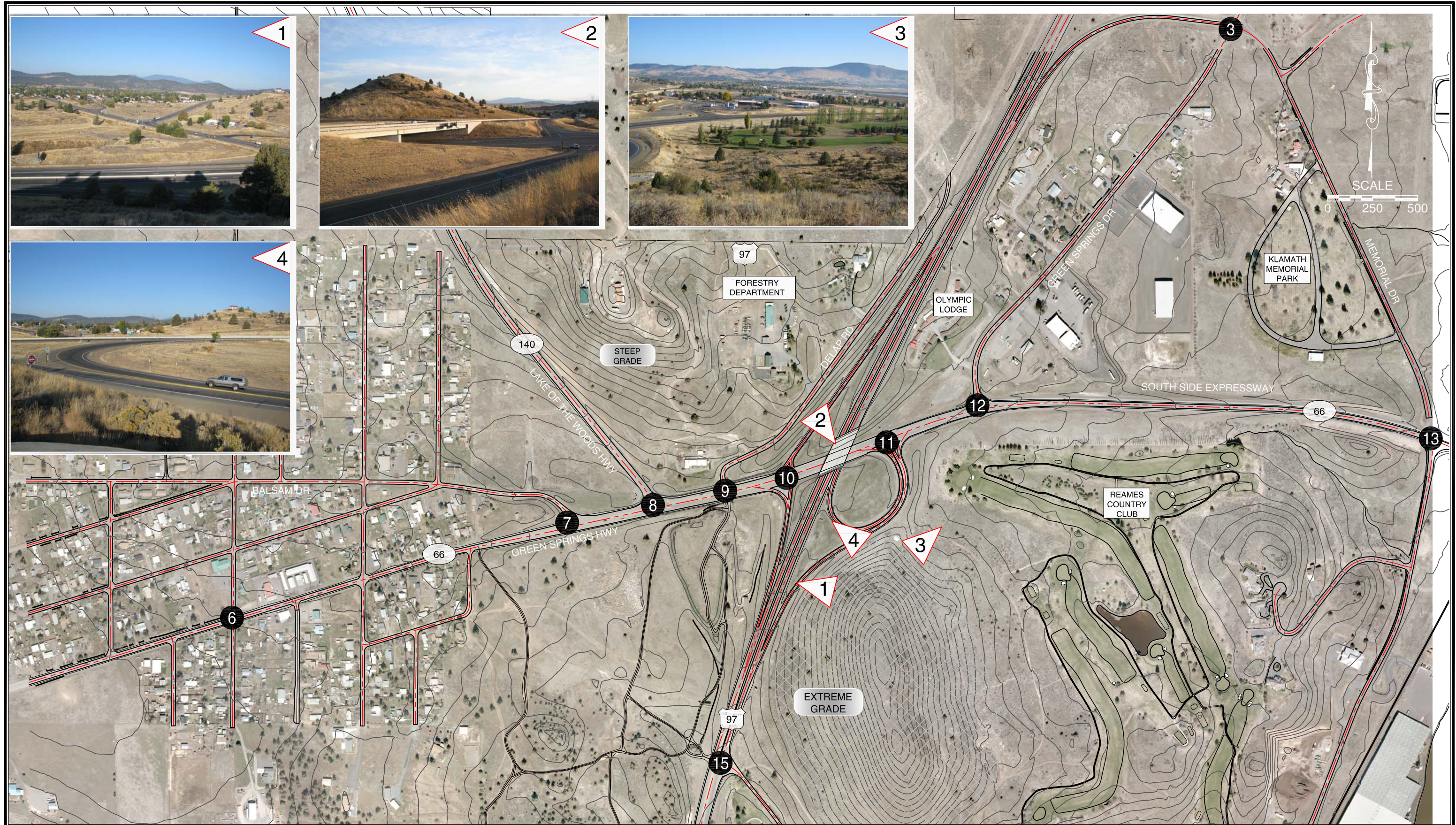
Figure 5



Future (2035) Lane Configurations and Traffic Control Devices

Future (2035) Traffic Conditions Weekday PM Peak Hour

Figure 6



**OREGON DEPARTMENT OF
TRANSPORTATION**



KITTELSON & ASSOCIATES, INC.
TRANSPORTATION ENGINEERING / PLANNING

**PROJECT AREA MAP
KLAMATH FALLS, OREGON**



**OREGON DEPARTMENT OF
TRANSPORTATION**



KITTELSON & ASSOCIATES, INC.
TRANSPORTATION ENGINEERING / PLANNING

Return comment form to: Ana Jovanovic
Ana.Jovanovic@odot.state.or.us
ODOT Region 4 Planning
63085 N Hwy. 97 Suite 107
Bend, OR 97701

**COMMENTING MAP
KLAMATH FALLS, OREGON**

This image shows a blank sheet of white paper with horizontal ruling lines. The lines are evenly spaced and run across the width of the page. There are no margins, text, or other markings on the paper.

Please return comments to:
Ana Jovanovic
ana.jovanovic@odot.state.or.us
ODOT Region 4 Planning
63085 N Hwy. 97 Suite 107
Bend, OR 97701